

FOR SALE OR FOR LEASE

CONTRACTOR'S STORAGE YARD, OFFICES AND WAREHOUSES

1731 Leslie Street, San Mateo, CA 94402



Property Highlights

- **Asking Sales Price: \$3,000,000**
- **Asking Rent: \$8,500 Per Month Gross**
- Total Building Size: $\pm 4,300$ SF
 - Office: ± 550 SF
 - Shop: $\pm 1,400$ SF
 - Warehouse: ± 950 SF
 - Detached Dock High Warehouse: $\pm 1,400$ SF
- Trailer: ± 320 SF (40' x 8')
- Lot Size: $\pm 12,922$ SF
 - Fully Secured Yard with Gate: $\pm 8,200$ SF
- Drive-Ins: 1 Total (10'w x 11'h)
- 3 Phase Heavy Power
- Air Compressor
- Grade-level and Dock Loading
- Zoning: M1 (District Manufacturing) & TOD/H (Transit Oriented Development / Housing Opportunities Overlay)



[M1 Zoning Info](#)



[TOD/H Zoning Info](#)

Contact Agents for More Details



ANDREW PECEIMER

Senior Commercial Real Estate Advisor

DRE # 00993289

M: 650.208.4971

O: 650.344.4300

apeceimer@cbcburlingame.com



GARRETT SWARTZ

Commercial Real Estate Advisor

DRE # 02178894

M: 925.222-0933

O: 650.352.3302

gswartz@cbcburlingame.com



**COLDWELL BANKER
COMMERCIAL**
WESTBAY REAL ESTATE
GROUP

1575 Bayshore Highway, Suite 100,
Burlingame CA 94010

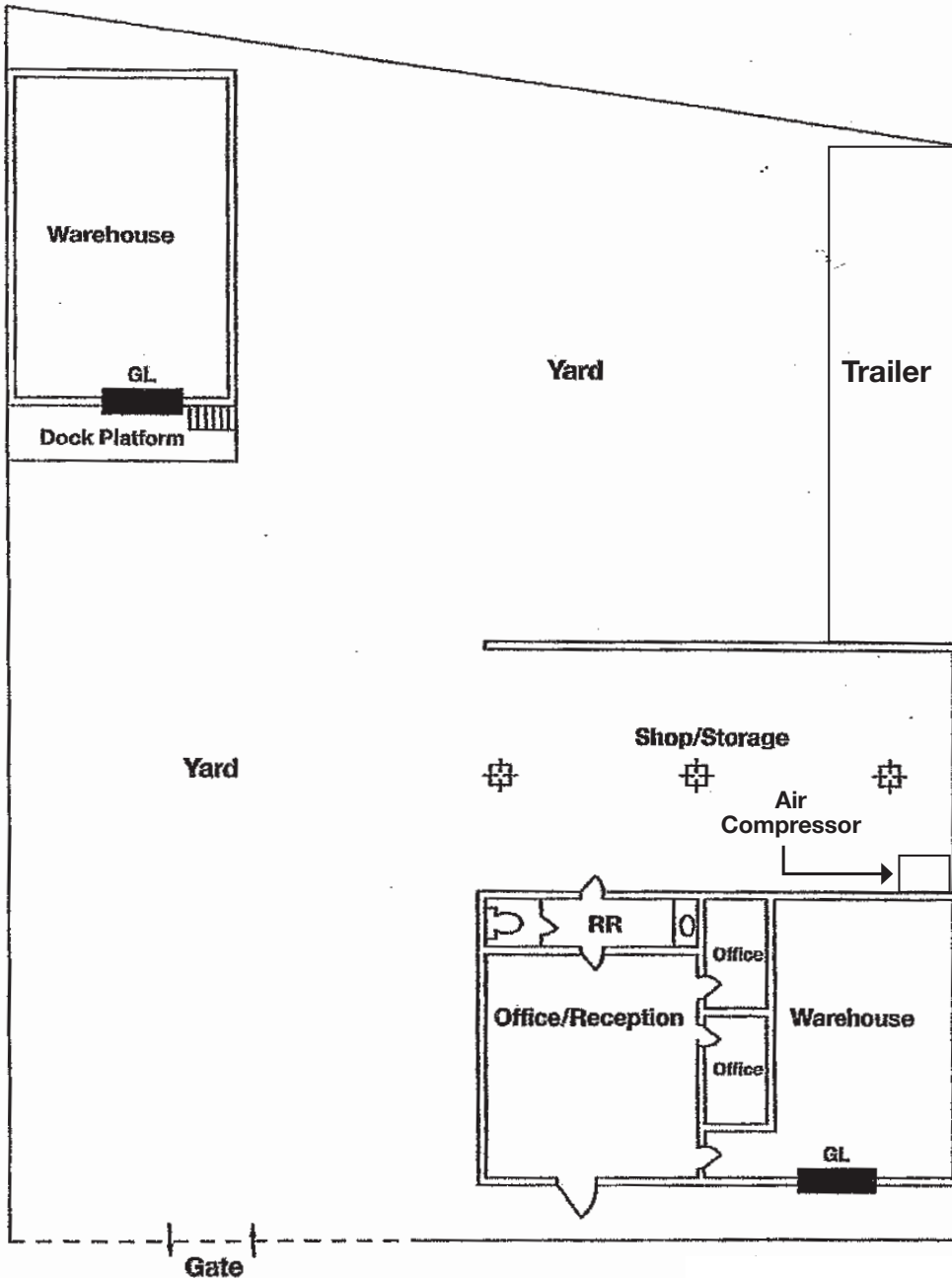


©2025 Coldwell Banker Real Estate LLC, dba Coldwell Banker Commercial Westbay Real Estate Group. All rights reserved. Coldwell Banker Commercial® and the Coldwell Banker Commercial logo are registered service marks owned by Coldwell Banker Real Estate LLC. Coldwell Banker Real Estate LLC, dba Coldwell Banker Commercial Affiliates fully supports the principal of the Fair Housing Act and the Equal Opportunity Act. Each office is independently owned and operated. The information provided is deemed reliable, but it is not guaranteed to be accurate or complete, and it should not be relied upon as such. This information should be independently verified before any person enters into a transaction based upon it.

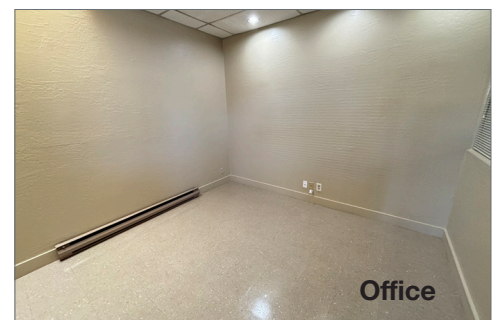
FOR SALE OR FOR LEASE

CONTRACTOR'S STORAGE YARD, OFFICES AND WAREHOUSES

1731 Leslie Street, San Mateo, CA 94402



*Not to Scale



Contact Agents for More Details

ANDREW PECEIMER

Senior Commercial Real Estate Advisor

DRE # 00993289

M: 650.208.4971

O: 650.344.4300

apeceimer@cbcburlingame.com



GARRETT SWARTZ

Commercial Real Estate Advisor

DRE # 02178894

M: 925.222-0933

O: 650.352.3302

gswartz@cbcburlingame.com



**COLDWELL BANKER
COMMERCIAL**
WESTBAY REAL ESTATE
GROUP

1575 Bayshore Highway, Suite 100,
Burlingame CA 94010



©2025 Coldwell Banker Real Estate LLC, dba Coldwell Banker Commercial Westbay Real Estate Group. All rights reserved. Coldwell Banker Commercial® and the Coldwell Banker Commercial logo are registered service marks owned by Coldwell Banker Real Estate LLC. Coldwell Banker Real Estate LLC, dba Coldwell Banker Commercial Affiliates fully supports the principal of the Fair Housing Act and the Equal Opportunity Act. Each office is independently owned and operated. The information provided is deemed reliable, but it is not guaranteed to be accurate or complete, and it should not be relied upon as such. This information should be independently verified before any person enters into a transaction based upon it.