

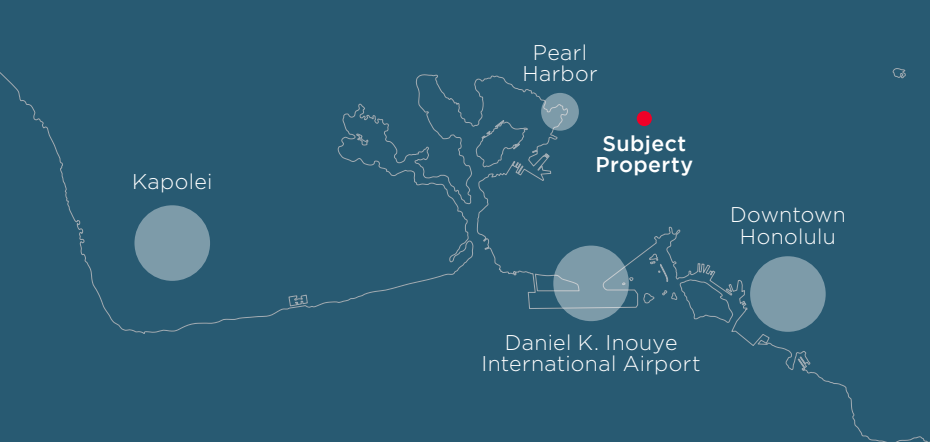
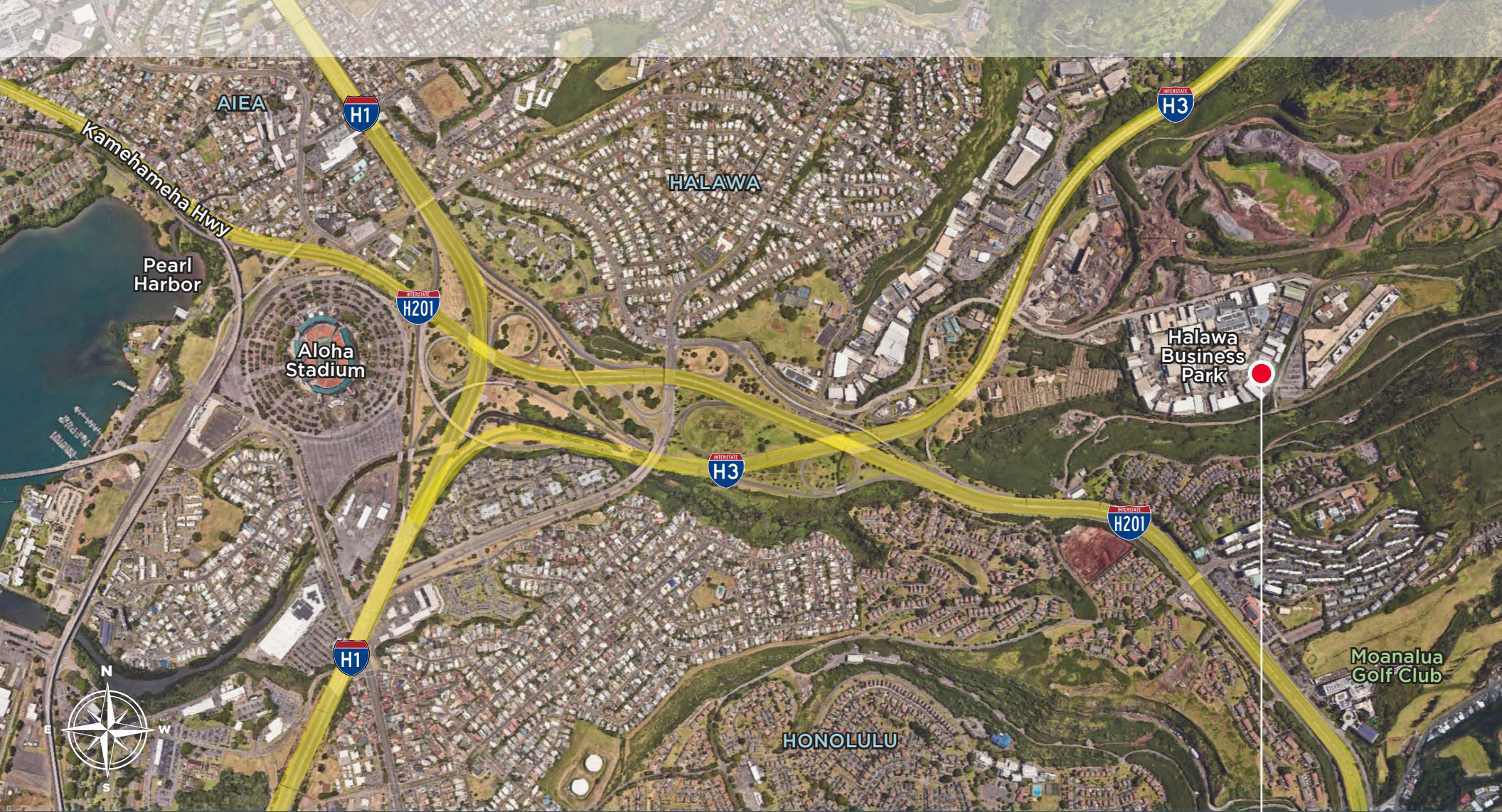
# 99-1392 Koaha Place

AIEA, HI 96701

**OWNER-USER OPPORTUNITY**



ChaneyBrooks



**99-1392**  
Koaha Place

Located just off the H-1 freeway in Halawa Business Park with easy access to all 3 major freeways in both directions. 10 minutes from the Daniel K. Inouye International Airport, 15 minutes from Downtown Honolulu's central business district and only 20 minutes from Kapolei.



## Property Summary

<b>ASKING PRICE</b>	\$650,000
<b>ADDRESS</b>	99-1392 Koaha Pl Aiea, HI 96701
<b>TAX MAP KEY</b>	1-9-9-77-17
<b>2024 PROPERTY TAX</b>	\$30,558.56
<b>TENURE</b>	Leasehold
<b>GROUND LEASE EXPIRATION</b>	December 31, 2046
<b>GROUND RENT</b>	\$14,711.42/Month*
<b>BUILDING SIZE</b>	4,955 SF
<b>LAND AREA</b>	22,871 SF
<b>YEAR BUILT</b>	1999
<b>ZONING</b>	I-2 Intensive Industrial District

*\*This is approximate and will adjust according to the base ground lease terms.*



# Investment Highlights

## Large Yard Space

Generous outdoor yard space ideal for storage or accommodating multiple work vehicles.

## Flexible Owner-User Opportunity

Option to utilize the entire warehouse space or add demising walls to create leasable sections and gain additional revenue.

## Building Features

One warehouse building with ceiling heights ranging from 16' at the low end and 20' at the high end. Well maintained office space at the front entrance of the building with a secured door and reception area. Additional features include mezzanine storage, private offices, conference room, kitchenette, and 2 restrooms (one with a shower).

## Roll Up Doors

Four (4) Doors Approximately 12' wide x 10' high.

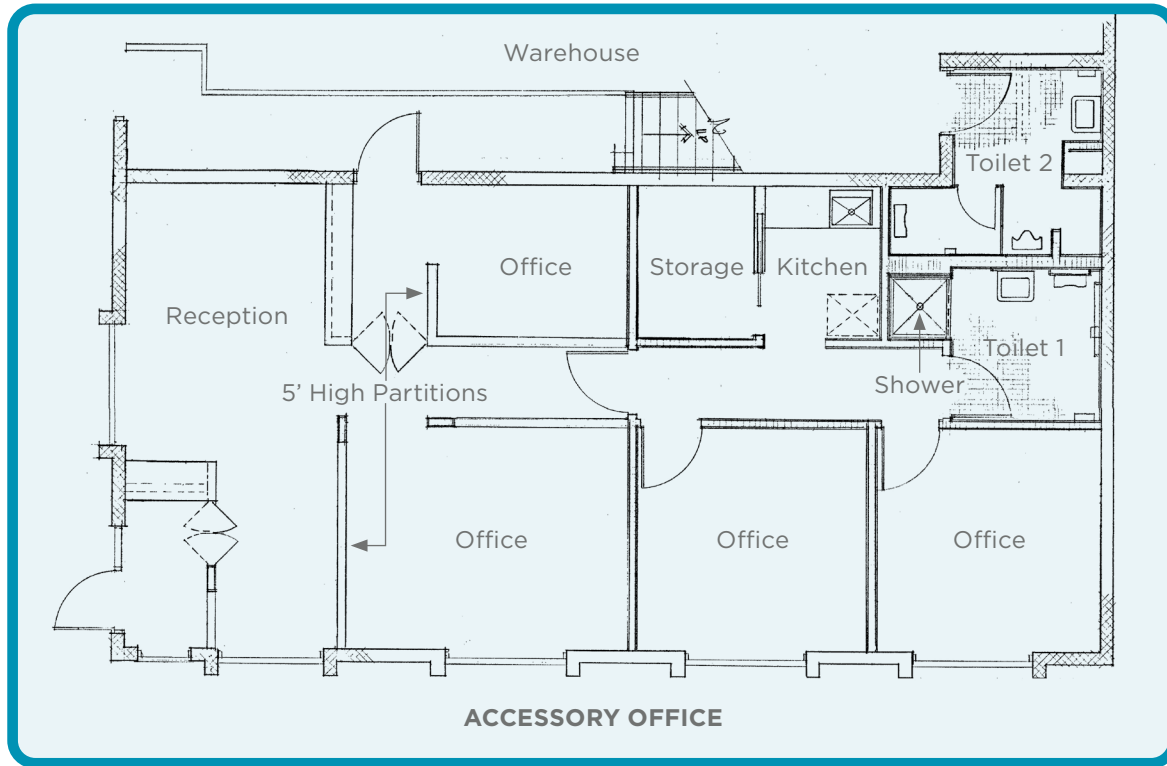
## Parking

Eighteen (18) marked stalls, with ample yard space for additional parking.

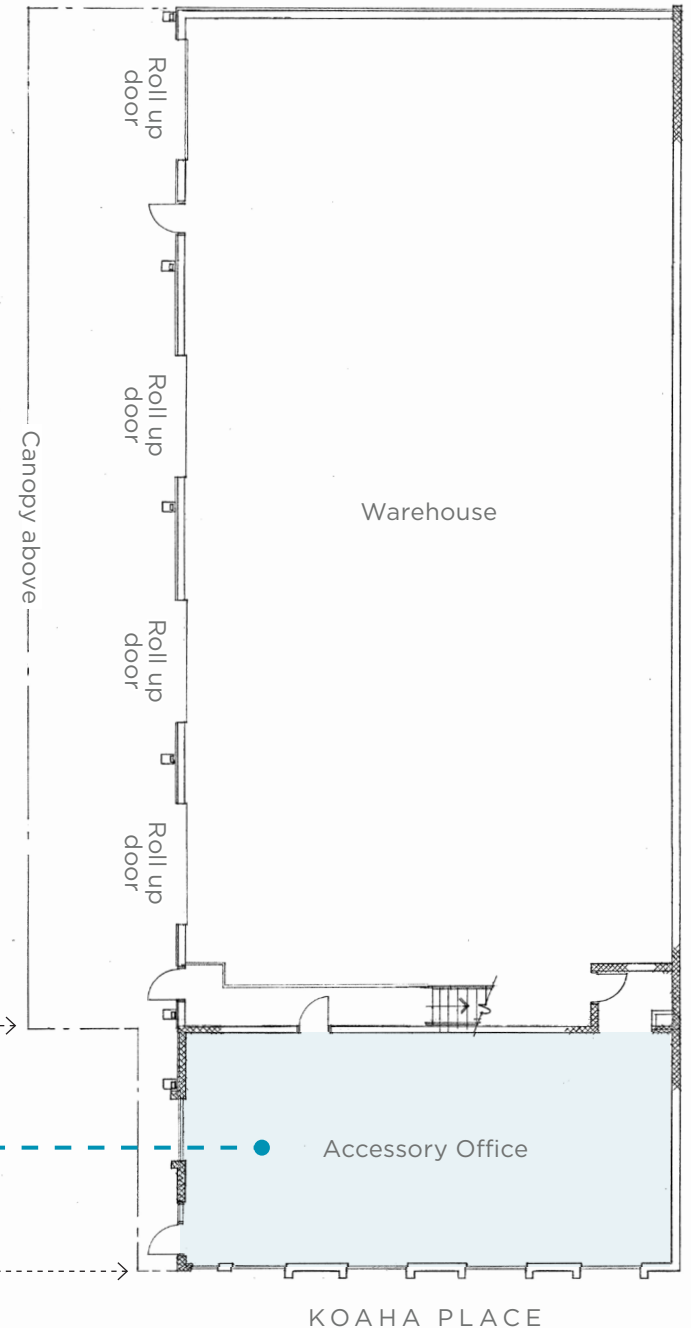
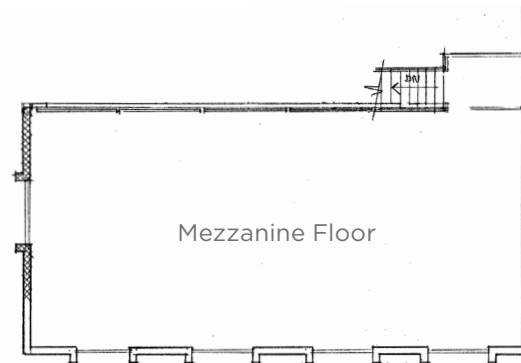




# Site Plan



Structural Analysis Group, Chaney, Brooks & Company LLC, and Owner disclaim any liability arising out of your use or reliance upon these building plans. These building plans are preliminary in nature and may be required to be reviewed and approved by a licensed architect and/or registered engineer before construction is commenced. Structural Analysis Group, Chaney, Brooks & Company LLC, and Owner do not represent or warrant that these building plans meet or comply with current building codes of any county in the State of Hawaii. Your use of these building plans is at your own risk. You are assuming all risk and losses arising from the use and reliance upon these building plans.





## CONTACT

**ANTHONY PROVENZANO (B), CCIM, SIOR**

+1 808 387 3444

[aprovenzano@chaneybrooks.com](mailto:aprovenzano@chaneybrooks.com)

**KELLY A. VEA (S), CCIM**

+1 808 778 7409

[kvea@chaneybrooks.com](mailto:kvea@chaneybrooks.com)

**TREVOR BLAKE (S)**

+1 808 489 2703

[tblake@chaneybrooks.com](mailto:tblake@chaneybrooks.com)



**CUSHMAN & WAKEFIELD**

**ChaneyBrooks**

1440 Kapiolani Boulevard, Suite 1010

Honolulu, Hawaii 96814

Main +1 808 544 1600 | Fax +1 808 544 9574

[cushwake.com](http://cushwake.com) | [chaneybrooks.com](http://chaneybrooks.com)

©2024 CUSHMAN & WAKEFIELD CHANEYBROOKS. NO WARRANTY OR REPRESENTATION, EXPRESS OR IMPLIED, IS MADE TO THE ACCURACY OR COMPLETENESS OF THE INFORMATION CONTAINED HEREIN, AND SAME IS SUBMITTED SUBJECT TO ERRORS, OMISSIONS, CHANGE OF PRICE, RENTAL OR OTHER CONDITIONS, WITHDRAWAL WITHOUT NOTICE, AND TO ANY SPECIAL LISTING CONDITIONS IMPOSED BY THE PROPERTY OWNER(S). AS APPLICABLE, WE MAKE NO REPRESENTATION AS TO THE CONDITION OF THE PROPERTY (OR PROPERTIES) IN QUESTION.

