

# FOR LEASE

1521 SIEVERIGHT AVENUE

Ottawa, ON K1T 1M5



**JOHN ZINATI**

+1(613)880.4106

john@zinatirealty.com

**LIZ POWELL**

+1(613)915.5496

liz@zinatirealty.com

92 CENTREPOINTE DRIVE • OTTAWA, ON K2G 6B1 • 613.853.4106 • ZINATIREALTY.COM

 **ZINATI**  
REALTY  
COMMERCIAL BROKERAGE



### OFFERING SUMMARY

Available SF:	8,252 SF
Lease Rate:	\$8,000.00 per month (NNN)
Additional Rent:	approx. \$2,667.00/month
Zoning:	IL2H(14)

### PROPERTY OVERVIEW

Commercial property in Blossom Park at 1521 Sieveright Avenue. Great opportunity to rent an open concept showroom building (approx. 5,320 SF) and warehouse/workshop space (approx. 2,932 SF) off Bank Street. This property is ideal for a business requiring extra space, as the property features a fully air-conditioned main building with a bright, open-concept showroom, desk areas, washroom and access to the warehouse/workshop from inside the main building. The upstairs of the main building features 4 offices, 1 boardroom, 2 washrooms, and kitchen. Additional highlights include 6 dedicated parking spaces in front of the main building, lots of outdoor parking and storage options at the rear of the property. Conveniently located near Bank Street, with quick access to a wide range of amenities.

### PROPERTY HIGHLIGHTS

- 2 storey building
- Onsite parking
- Includes warehouse/workshop
- Close to Towngate Plaza, Tim Hortons, Walmart, restaurants and many more amenities
- Available January 1st, 2026

**JOHN ZINATI**

+1(613)880.4106

john@zinatirealty.com

**LIZ POWELL**

+1(613)915.5496

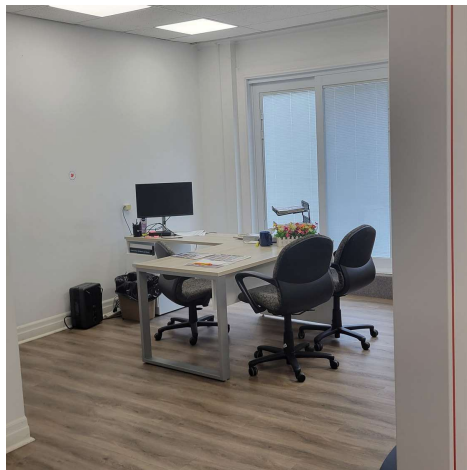
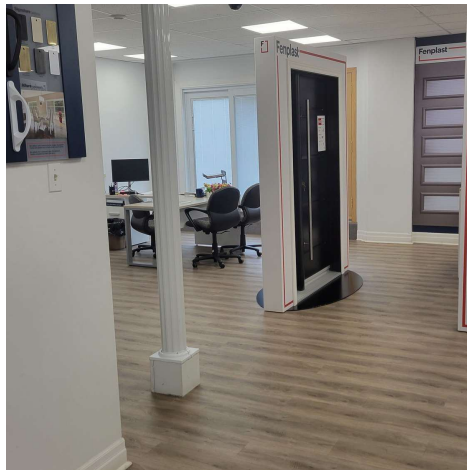
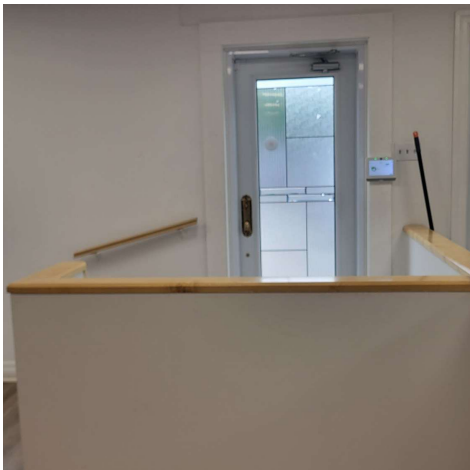
liz@zinatirealty.com

92 CENTREPOINTE DRIVE • OTTAWA, ON K2G 6B1 • 613.853.4106 • ZINATIREALTY.COM



# 1521 SIEVERIGHT AVENUE OTTAWA, ON K1T 1M5

Additional Photos



**JOHN ZINATI**

+1(613)880.4106

john@zinatirealty.com

**LIZ POWELL**

+1(613)915.5496

liz@zinatirealty.com

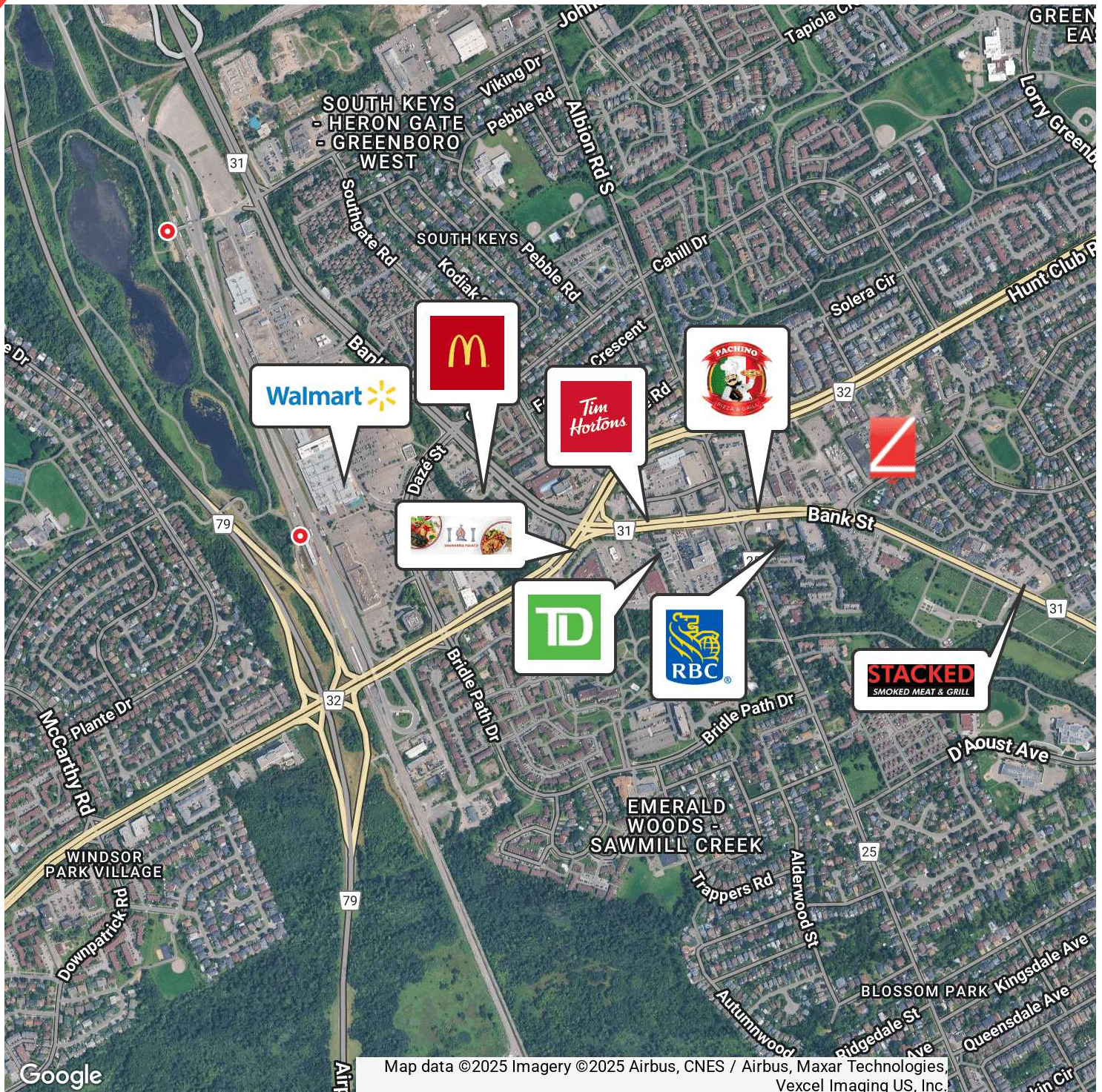
92 CENTREPOINTE DRIVE • OTTAWA, ON K2G 6B1 • 613.853.4106 • ZINATIREALTY.COM

**ZINATI**  
REALTY  
COMMERCIAL BROKERAGE



# 1521 SIEVERIGHT AVENUE OTTAWA, ON K1T 1M5

Retailer Map



**JOHN ZINATI**

+1(613)880.4106

john@zinatirealty.com

**LIZ POWELL**

+1(613)915.5496

liz@zinatirealty.com

92 CENTREPOINTE DRIVE • OTTAWA, ON K2G 6B1 • 613.853.4106 • ZINATIREALTY.COM

**ZINATI**  
REALTY  
COMMERCIAL BROKERAGE