

SALE

SPECIAL USE

16,751 SF BUILDING ON 1.68 ACRES



### SALE PRICE

\$1,750,000 (\$104/SF)

### BUILDING SF

16,751 SF

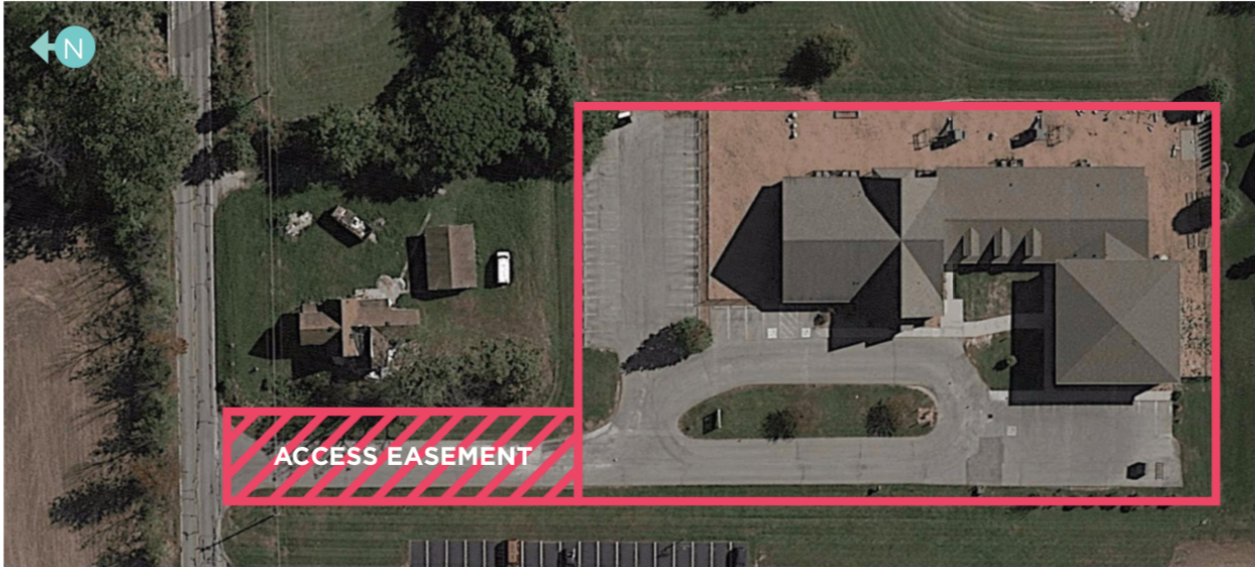
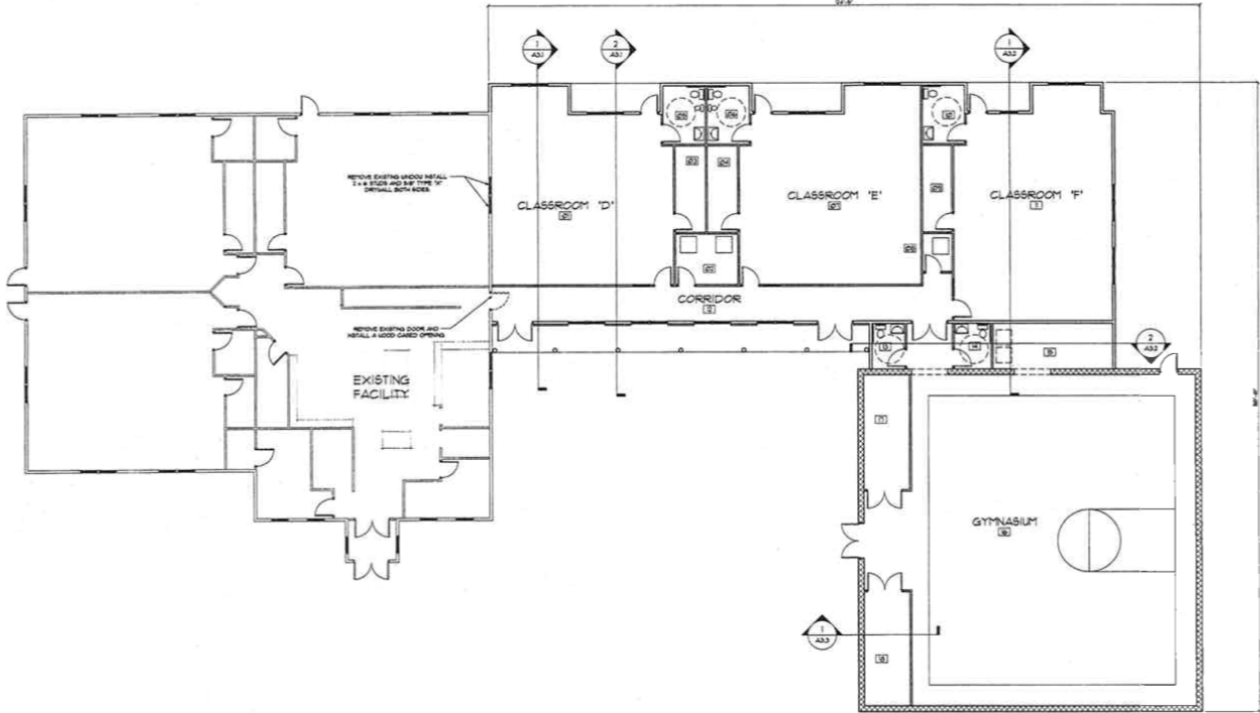
- + 1.68 Acres
- + Gymnasium/sanctuary
- + 7 large classrooms with restrooms
- + Large outdoor play area
- + 38 parking spaces
- + Zoned PUD (McCordsville, IN)

**JEFF MERRITT**  
Principal  
O 317.663.6537  
C 317.714.5423  
jeff.merritt@rcre.com

in #growIndiana

# 6633 W COUNTY ROAD 900 N

MCCORDSVILLE, IN 46055



# 6633 W COUNTY ROAD 900 N

MCCORDSVILLE, IN 46055



in #growIndiana

The information contained herein was obtained from sources we consider reliable. We cannot be responsible for errors, omissions, prior sale or lease, withdrawal from the market or change in price. Seller and broker make no representation as to the environmental condition of the property and recommend the lessee's/purchaser's independent investigation.

9339 Priority Way West Drive  
Suite 120  
Indianapolis, IN 46240  
317.663.6000