

FOR LEASE

# SLABTOWN FLEX BUILDING WITH PARKING & YARD

1640 NW 19TH AVE, PORTLAND, OR 97209

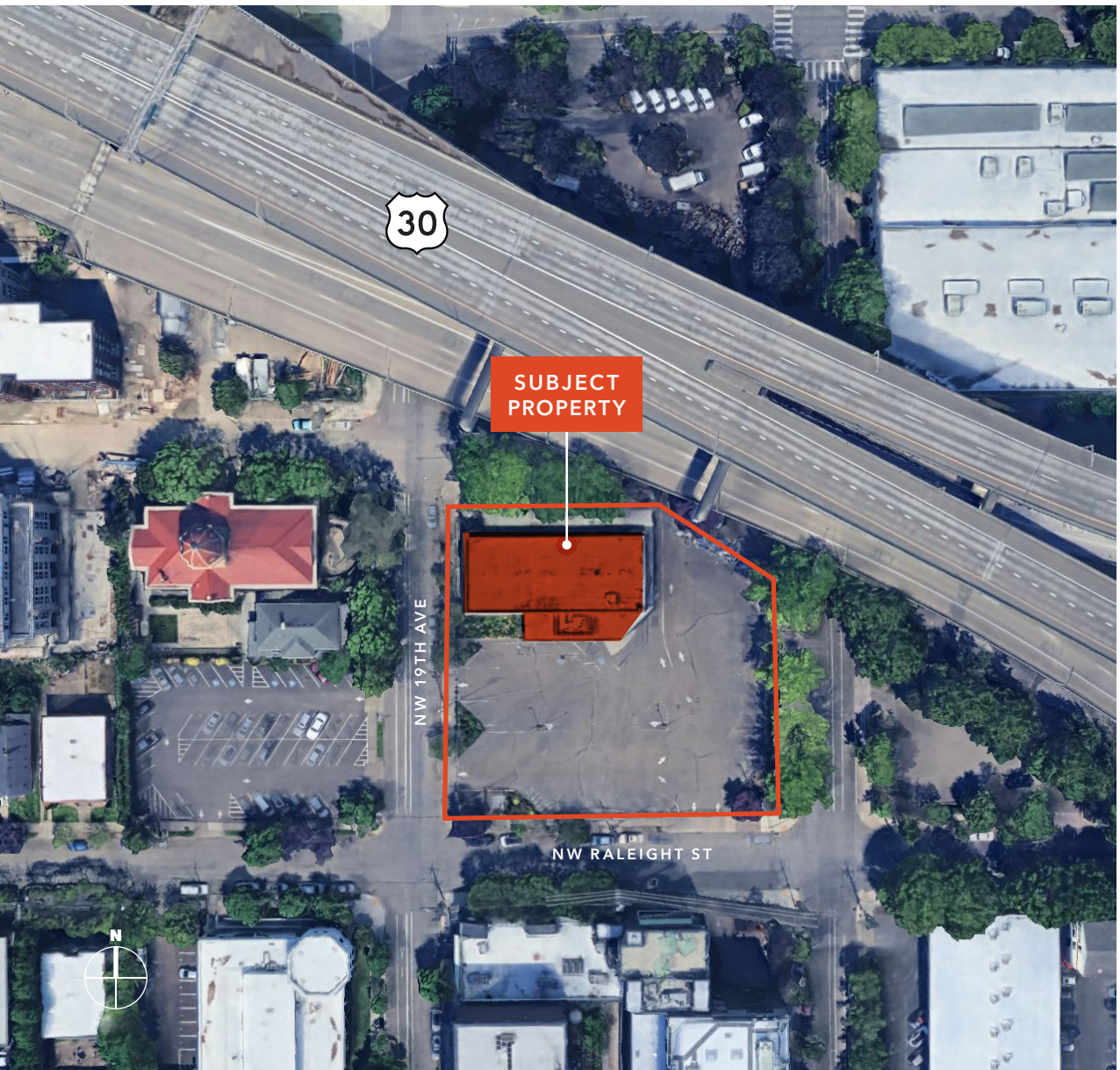
*Income-producing parking lot with yard/storage*

KIDDER.COM

**km** Kidder  
Mathews



1640 NW 19TH AVE



*Easy access to major highway and public transportation options.*

STORIES	2
BUILDING SIZE	8,550 SF
PARKING	40 spaces
USES	Office, retail & flex space
POTENTIAL	Fenced yard area
ZONING	Commercial Mixed Use (CM3)

*8,550 SF*  
BUILDING SIZE

*\$1.15*  
LEASE RATE, NNN



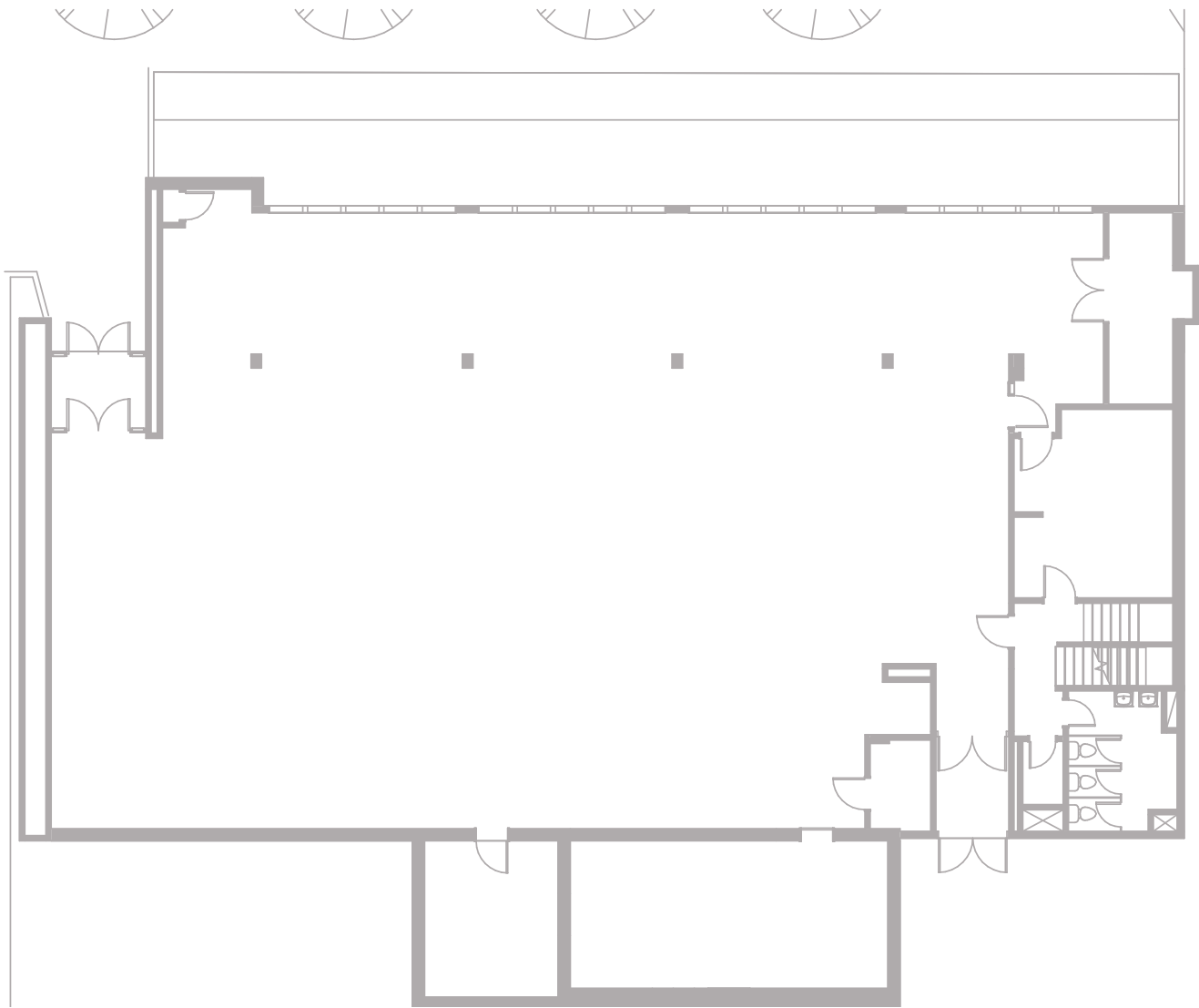
1640 NW 19TH AVE

# SITE PLAN

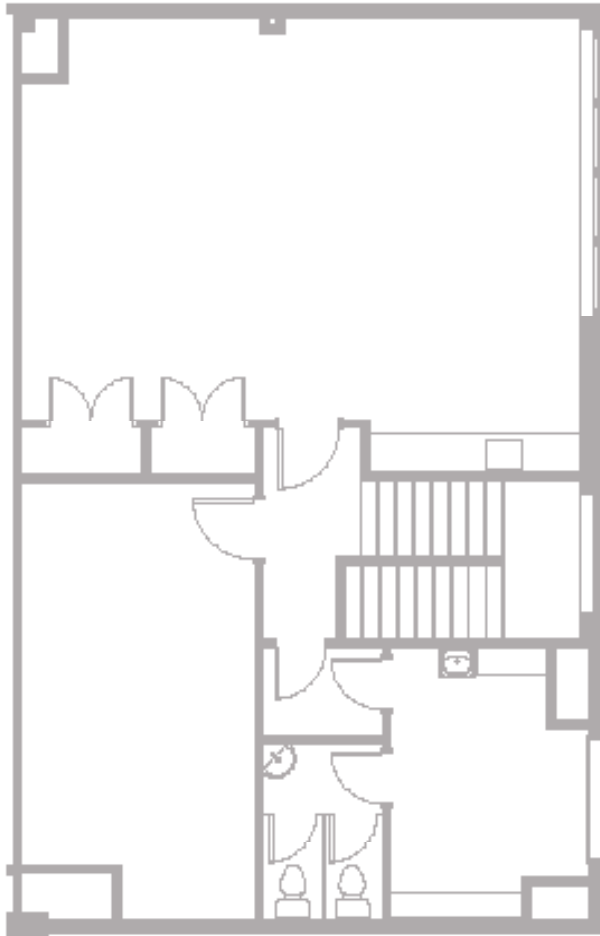


# FIRST FLOOR PLAN

7,292 SF  
FIRST FLOOR AREA



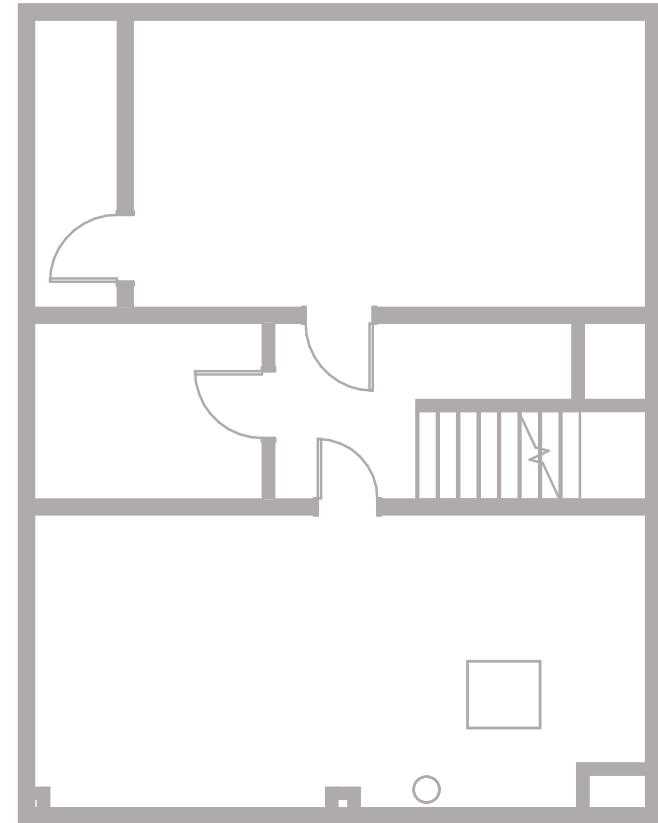
## SECOND FLOOR PLAN



*1,258 SF*

SECOND FLOOR AREA

## BASEMENT PLAN



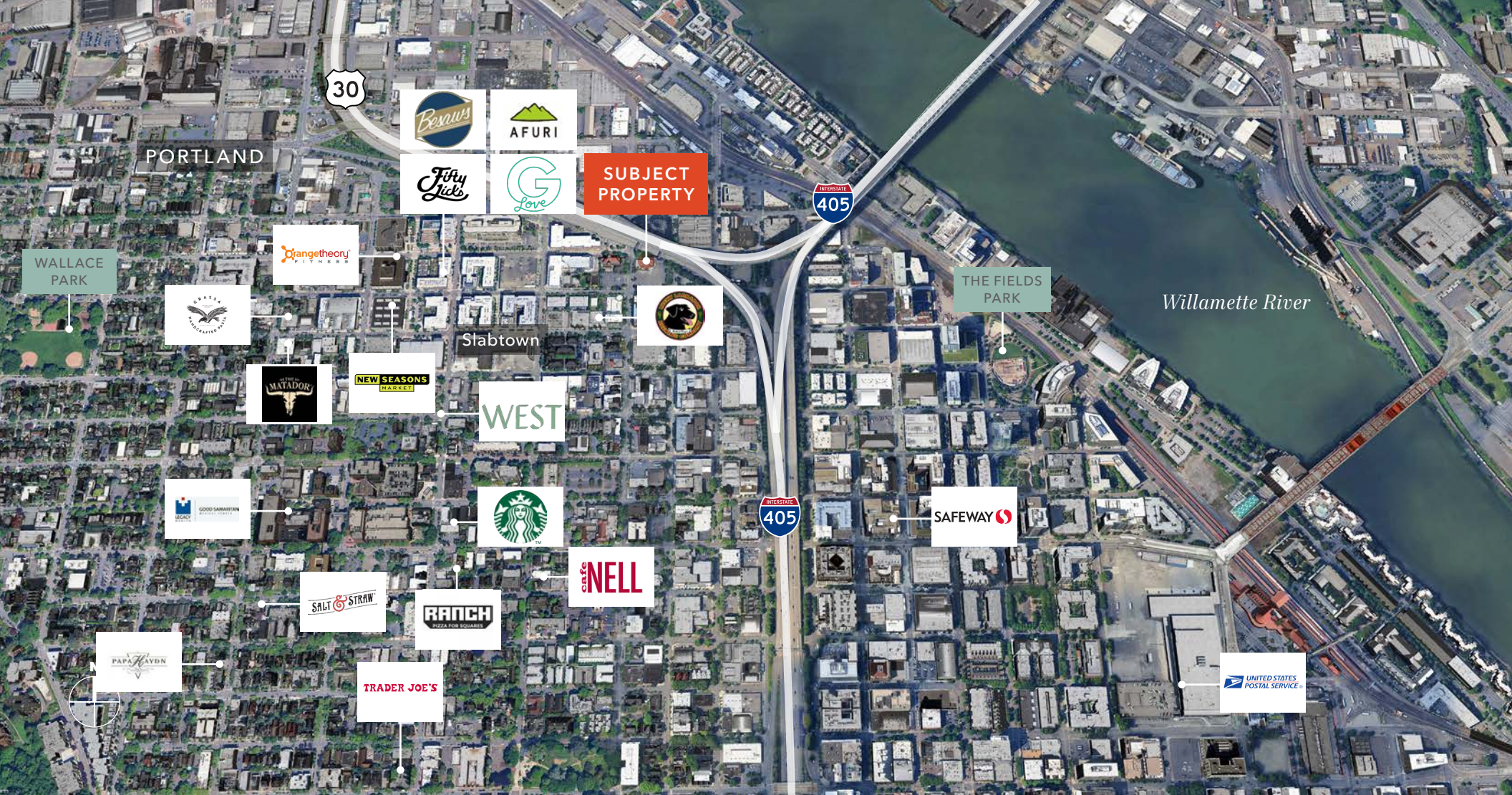
*1,013 SF*

BASEMENT AREA









1640 NW 19TH AVE

*For more information on  
this property, please contact*

CLIFF FINNELL, SIOR  
503.221.2295  
cliff.finnell@kidder.com

KIDDER.COM

This information supplied herein is from sources we deem reliable. It is provided without any representation, warranty, or guarantee, expressed or implied as to its accuracy. Prospective Buyer or Tenant should conduct an independent investigation and verification of all matters deemed to be material, including, but not limited to, statements of income and expenses. Consult your attorney, accountant, or other professional advisor. All Kidder Mathews designs are the sole property of Kidder Mathews. Branded materials and layouts are not authorized for use by any other firm or person.

