

# AVAILABLE

## Rockville Commerce Center, Bldg B

2412 Granite Ridge Road, Rockville, VA 23146



### Exclusive Agent:

**KEVIN COX, SIOR**  
(804) 521-1468  
Kevin@porterinc.com

### HIGHLIGHTS

- 1,250 SF +/- Office/Warehouse Unit 5
- Zoned M-2
- FOR LEASE: \$12.50/SF

4801 Radford Avenue | P.O. Box 6482  
Richmond, VA 23230  
www.porterinc.com  
804-353-7994

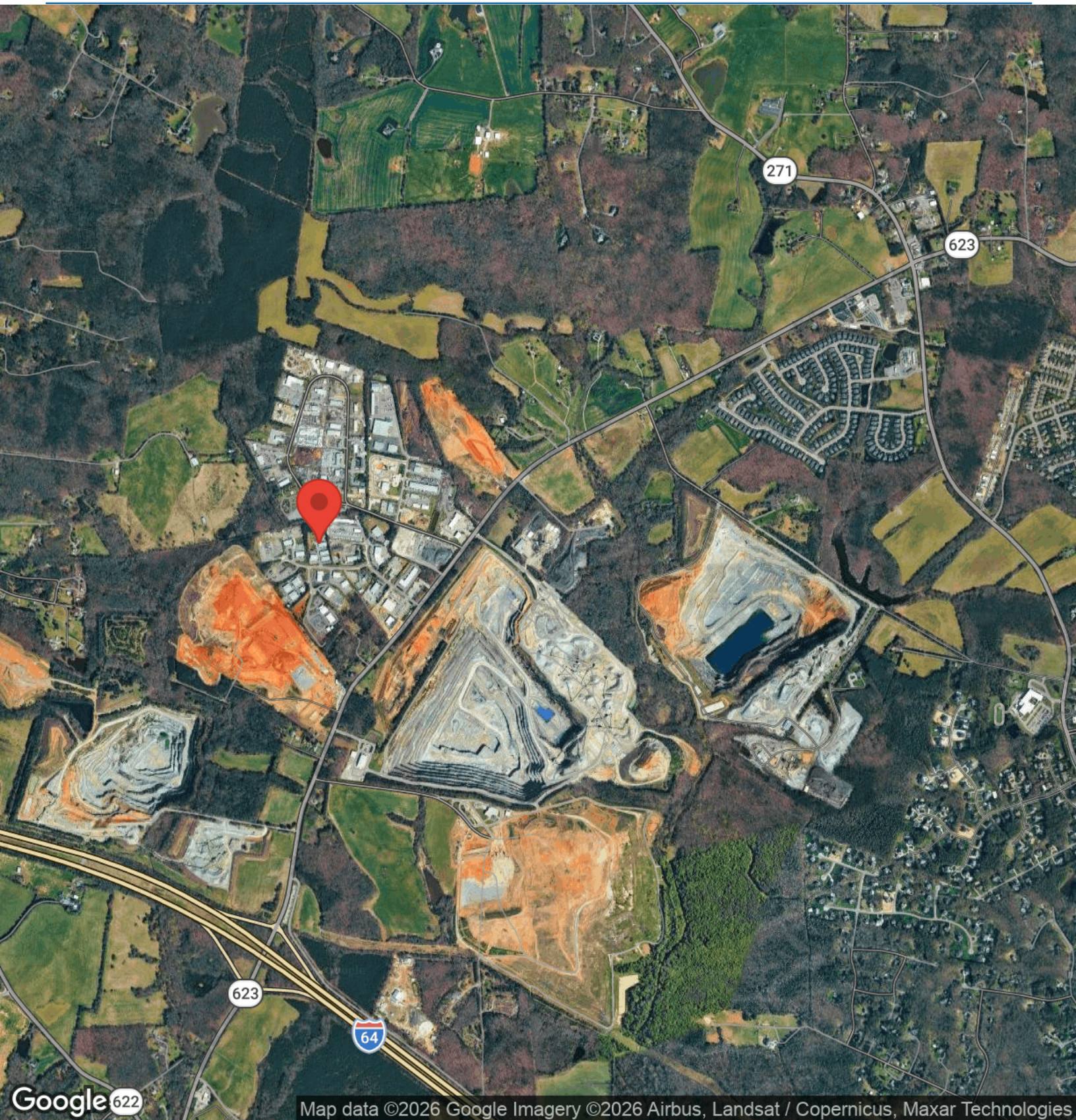
**PORTER**  
R E A L T Y



This information has been prepared by Porter Realty Company, Inc. for marketing purposes only. No representation or warranty, expressed or implied, is made as to the accuracy of the foregoing information. Terms of sale or lease and availability are subject to change or withdrawal without notice.

# AERIAL MAP

2412 Granite Ridge Road | Rockville, VA 23146



Map data ©2026 Google Imagery ©2026 Airbus, Landsat / Copernicus, Maxar Technologies

Kevin Cox, SIOR  
(804) 521-1468  
Kevin@porterinc.com



Porter Realty Company, Inc. | 4801 Radford Avenue | P.O. Box 6482 | Richmond, VA 23230 | www.porterinc.com

This information has been prepared by Porter Realty Company, Inc. for marketing purposes only. No representation or warranty, expressed or implied, is made as to the accuracy of the foregoing information. Terms of sale or lease and availability are subject to change or withdrawal without notice.