



FOR LEASE

Charming SW Office

17 SOUTHWEST GIBBS STREET

Portland, OR 97239

PRESENTED BY:

STACY LOONEY

O: 503.459.4387

stacy.looney@svn.com

OR #940200076

CHARMING OFFICE SPACE IN SW



OFFERING SUMMARY

LEASE RATE:	\$1,550.00 per month (MG)
BUILDING SIZE:	2,400 SF
AVAILABLE SF:	1,200 SF
LOT SIZE:	4,221 SF
YEAR BUILT:	1908
MARKET:	SW Portland

PROPERTY OVERVIEW

Abundant Natural Light with a reception room, 2 offices, and spacious open creative office space for cubicles, team areas or a conference room. Also has a kitchenette and restroom. Onsite and offsite parking with easy access to highways. Property offers creative office layouts to suit various business requirements. Enjoy the convenience of nearby dining and retail options along with easy access to major transportation hubs. Tenants can enjoy an afternoon stroll along the SW Waterfront by way of a convenient tunnel located just behind the property.

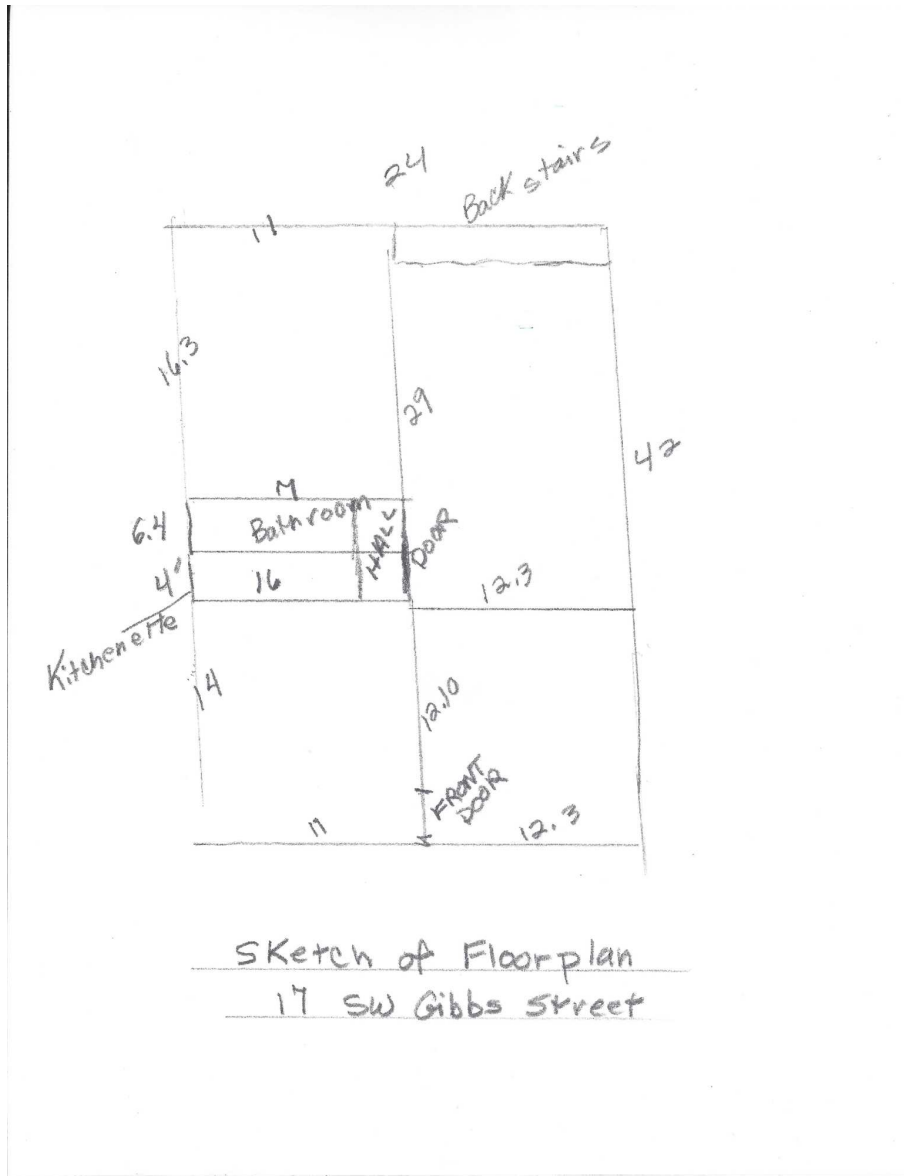
PROPERTY HIGHLIGHTS

- Abundant natural light
- 2 Private offices and open creative office space, Kitchenette & Restroom
- Air Conditioned Office Space
- Office layouts to suit various business needs
- On-site parking available at no charge
- Proximity to major transportation hubs
- Convenient access to nearby dining and retail options

STACY LOONEY

O: 503.459.4387
stacy.looney@svn.com
OR #940200076

FLOOR PLAN - FIRST FLOOR OFFICE



AVAILABLE SPACE

LEASE TYPE:	MG	LEASE TERM:	Negotiable
TOTAL SPACE:	1,200 SF	LEASE RATE:	\$1,550.00 per month

AVAILABLE SPACES

STACY LOONEY

O: 503.459.4387
 stacy.looney@svn.com
 OR #940200076

ADDITIONAL PHOTOS



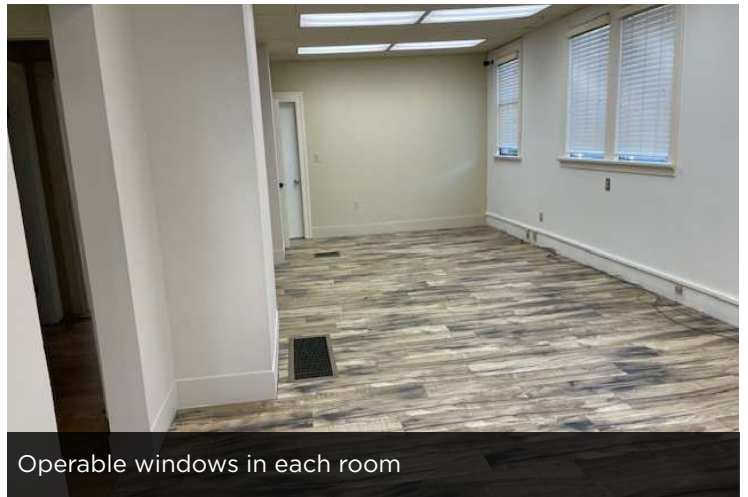
Front Reception



Large Front Window with nice Natural Light



First Large Room off Reception



Operable windows in each room



Office 1



Office 2

STACY LOONEY

O: 503.459.4387

stacy.looney@svn.com

OR #940200076

RETAILER MAP



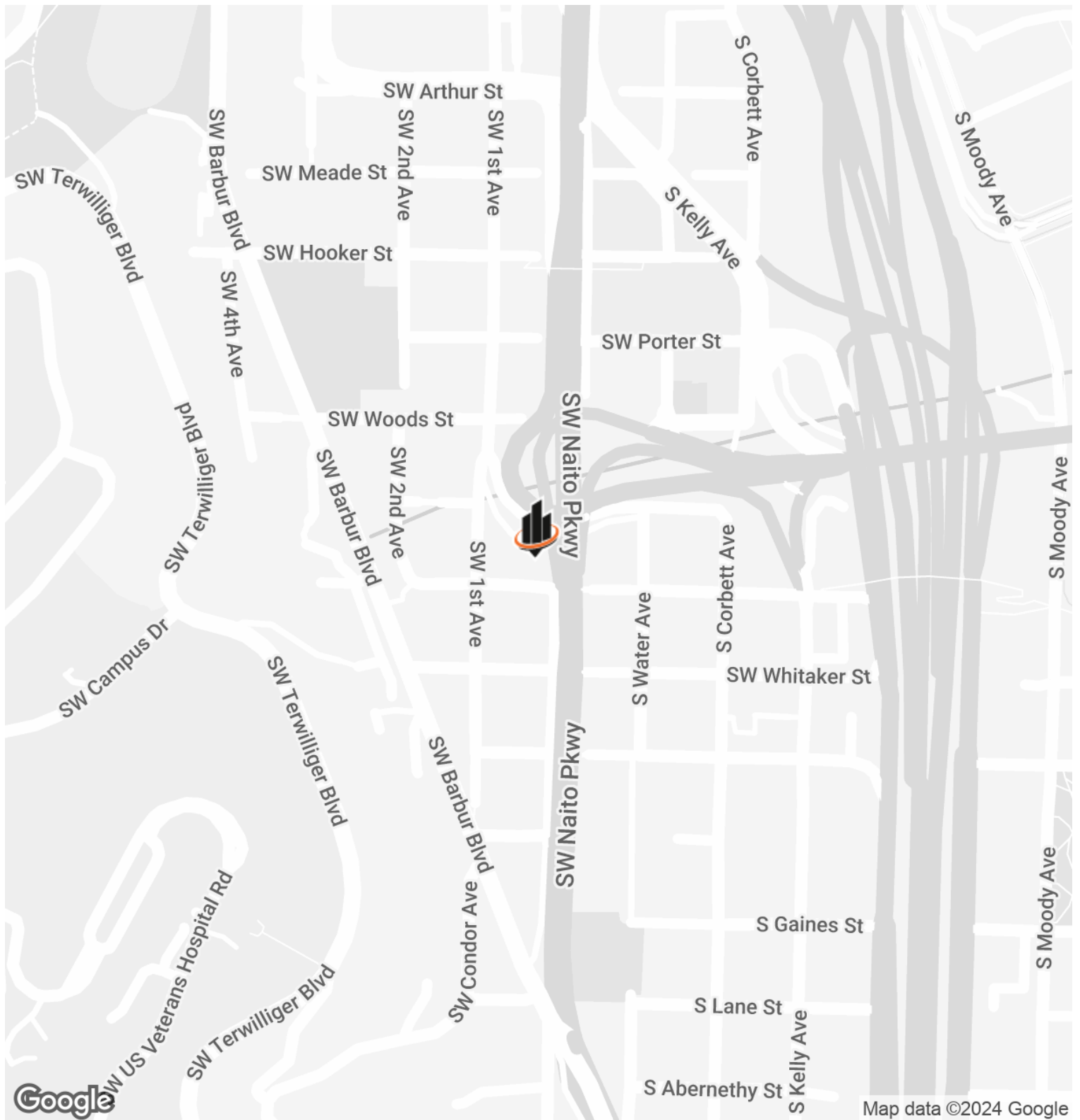
STACY LOONEY

O: 503.459.4387

stacy.looney@svn.com

OR #940200076

LOCATION MAP



STACY LOONEY

O: 503.459.4387

stacy.looney@svn.com

OR #940200076