

GREENBROOK

EXECUTIVE CENTER

100 Passaic Avenue, Fairfield, NJ

73,635 RSF FOR LEASE

Office Suites from 3,767 RSF to 25,746 RSF



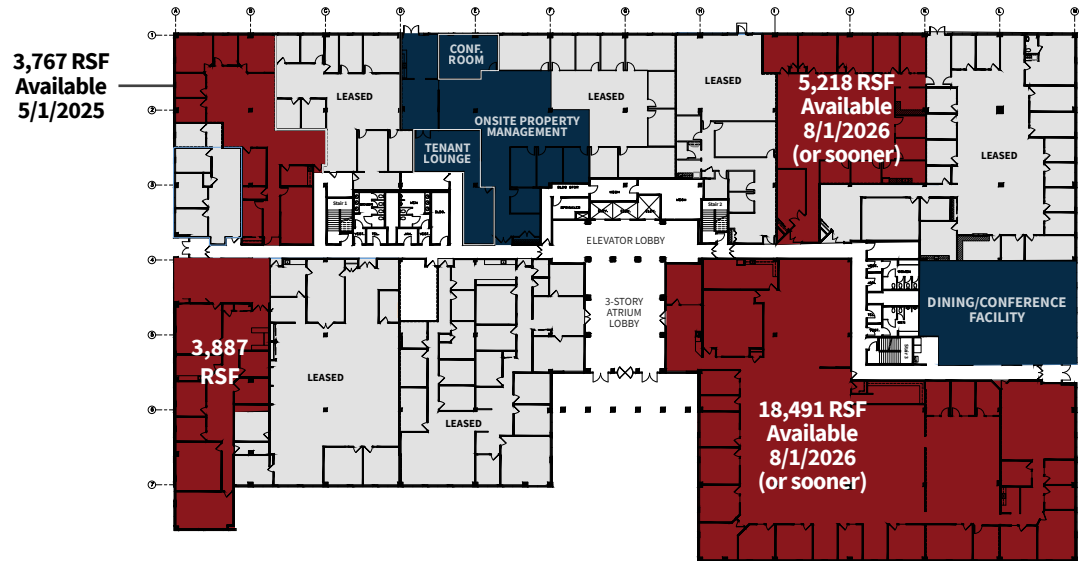
BUILDING HIGHLIGHTS

- Winner of the New Jersey Building Owners and Managers Association's (BOMA) Building of the Year award
- Dramatic 3-story atrium with its signature clock, flat screen TV, tasteful landscaping, and tenant balconies
- On-site full-service dining/conference facility for department meetings or seminars with corporate catering available
- Tenant amenity lounge
- Large efficient floor plates
- Small suites can accommodate growing businesses while offering the cache of being in a Class A building
- Storage space available
- On-site ATM, vending and outdoor seating area
- Abundant parking - 5/1,000 RSF
- Close proximity to many dining options
- Convenient access to Essex County Airport and Newark International Airport
- **On-site ownership and property management**

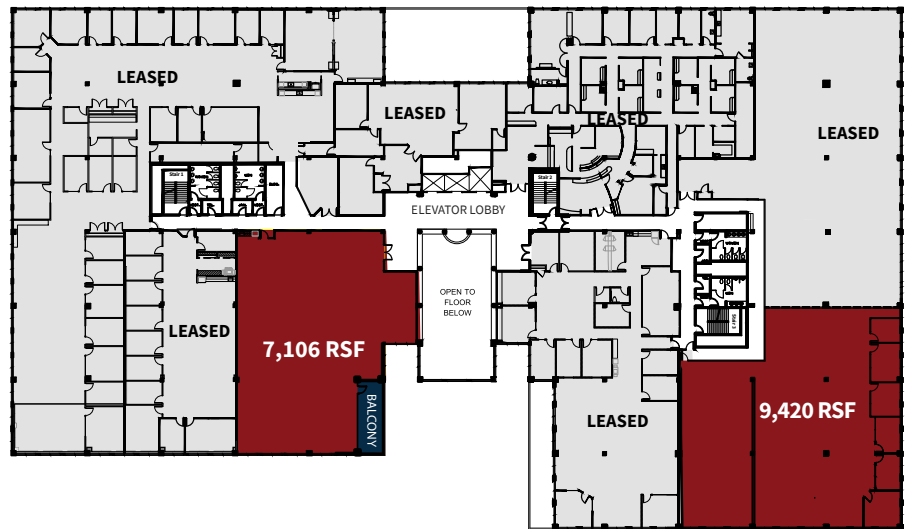


FLOOR PLANS

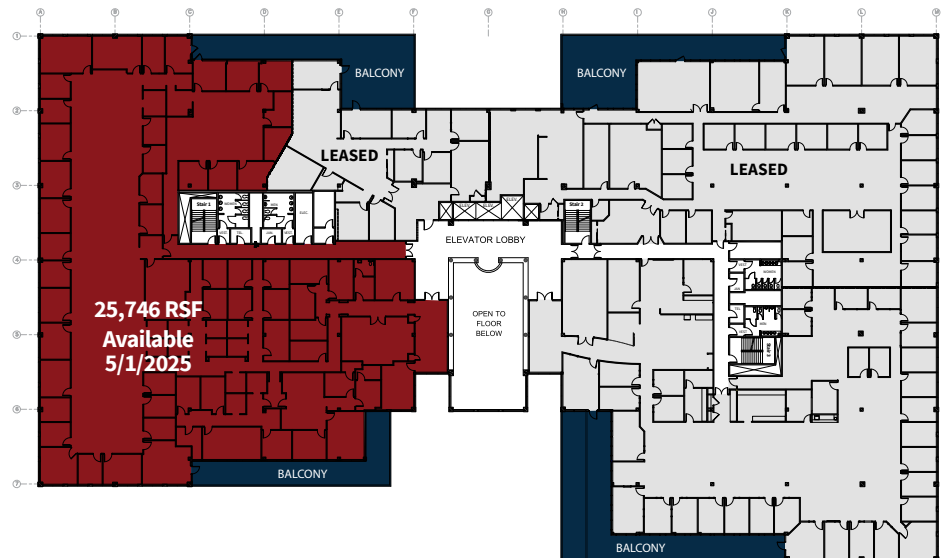
FIRST FLOOR



SECOND FLOOR



THIRD FLOOR



LOCATION

Located south of Route 46 and Interstate 80 with easy access to the Garden State Parkway, Interstates 280, 287 and Routes 3 and 23.



Owned and managed by:



**Jones Lang LaSalle
Brokerage, Inc.**

A licensed real estate broker
8 Campus Drive, Suite 305
Parsippany, New Jersey 07054
+1 973 829 4800

For more information or to arrange a property tour:

Fred Hyatt
+1 973 876 8711
fred.hyatt@jll.com

Derek DeMartino
+1 201 528 4413
derek.demartino@jll.com

Jack DiPietro
+1 862 777 2981
jack.dipietro@jll.com

Although information has been obtained from sources deemed reliable, JLL does not make any guarantees, warranties or representations, express or implied, as to the completeness or accuracy as to the information contained herein. Any projections, opinions, assumptions or estimates used are for example only. There may be differences between projected and actual results, and those differences may be material. JLL does not accept any liability for any loss or damage suffered by any party resulting from reliance on this information. If the recipient of this information has signed a confidentiality agreement with JLL regarding this matter, this information is subject to the terms of that agreement. ©2024 Jones Lang LaSalle Brokerage, Inc. All rights reserved.