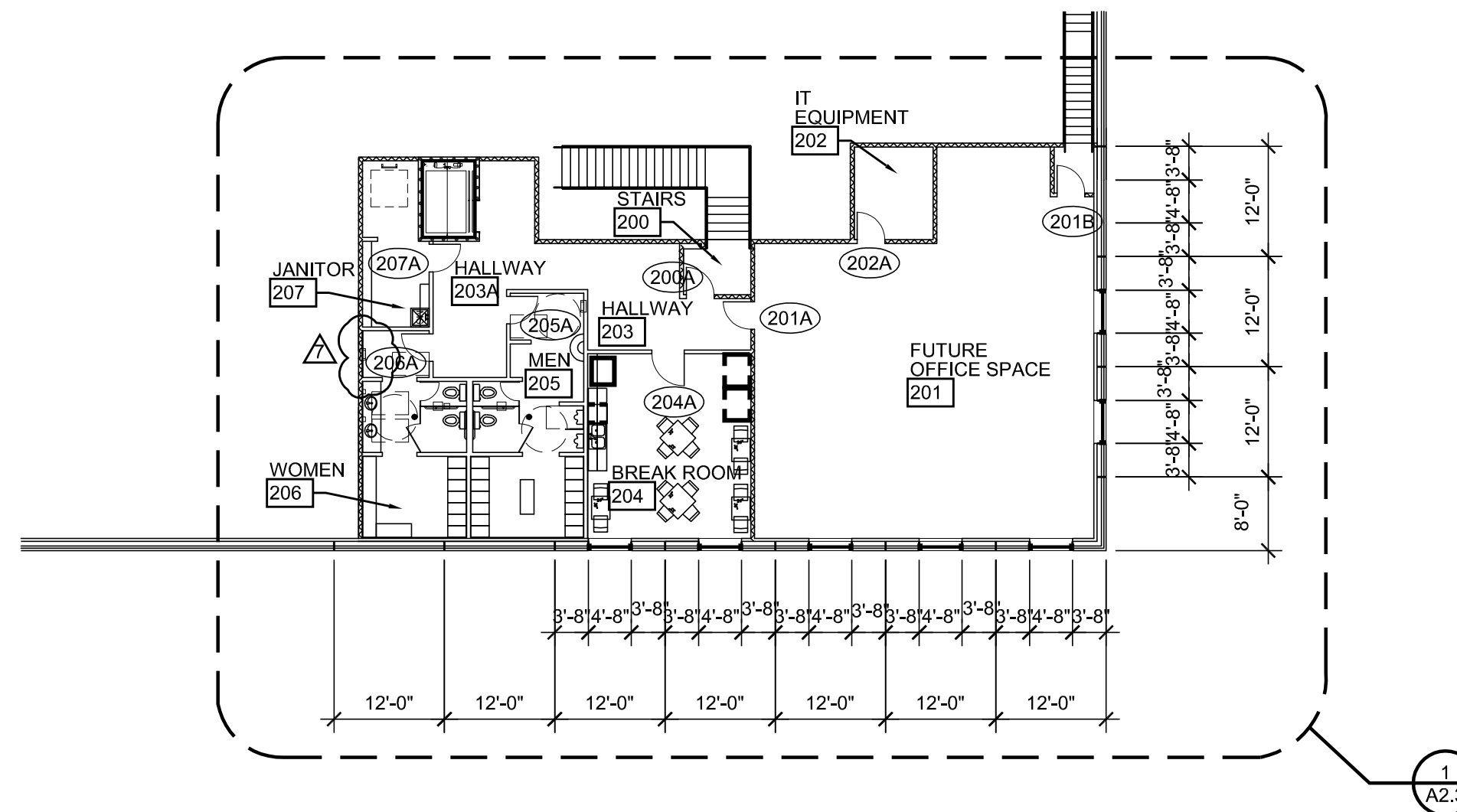


1 OVERALL FIRST FLOOR PLAN
SCALE: 1/16" = 1'-0"



2 OVERALL SECOND FLOOR PLAN
SCALE: 1/16" = 1'-0"

WALL LEGEND:

- EXTERIOR CONCRETE PRECAST CONCRETE PANEL ARE SAND CONTINUOUS INS STRUCTURAL..
- CEILING HEIGHT V 3-5/8" 25 GA. MET EACH SIDE TO 4" SOUND BATT INSU
- FULL HEIGHT WALL TO STRUCTURAL DECK ABOVE 25 GA. 3-5/8" METAL STUDS AT 24" O.C. AT 1ST FLOOR 20 GA. 3-5/8" METAL STUDS AT 16" O.C. AT 2ND FLOOR PROVIDE 5/ 8" GYP BD. EACH SIDE WITH SOUND BATT INSULATION IN STUD CAVITY. INSTALL 18 GA. LONG LEG SLIP TRACK AT HEAD TO ALLOW FOR 3" COMPRESSION AND 1" EXTENSION MOVEMENT. SEE DETAILS
- FULL HEIGHT WALL TO STRUCTURAL DECK ABOVE 20 GA. 6" METAL STUDS AT 24" O.C. AT 1ST FLOOR PROVIDE 5/ 8" GYP BD. EACH SIDE WITH SOUND BATT INSULATION IN STUD CAVITY. INSTALL 18 GA. LONG LEG SLIP TRACK AT HEAD TO ALLOW FOR 3" COMPRESSION AND 1" EXTENSION MOVEMENT. SEE DETAILS
- 1 HR. RATED SHAFT WALL TO STRUCTURAL DECK ABOVE. 4" METAL C-H SHAFT WALL STUDS AT 24" O.C. WITH 5/ 8" TYPE-X GYP. BD. ON OUTSIDE FACE AND 1" FIRE SHIELD SHAFT LINER ON INSIDE FACE. U.L. DESIGN NO. 469 PROVIDE RATED SLIPHEAD AT ROOF STRUCTURE. SEE DETAILS
- 1 HR. RATED FIRE WALL TO STRUCTURAL DECK ABOVE 3-5/8" METAL STUDS AT 24" O.C. WITH 5/ 8" TYPE-X GYP. BD. BOTH SIDES. U.L. DESIGN U-419.

GENERAL NOTES:

- PROVIDE CONTROL JOINTS EVERY 30 LINEAR FEET (MIN.) OF UNINTERRUPTED SURFACE AT GYPSUM BOARD WALLS AND CEILINGS.
- G.C. TO PROVIDE FIRE EXTINGUISHER ABC 10# THROUGHOUT. TRAVEL DISTANCE BETWEEN EXTINGUISHERS NOT TO EXCEED 75' (MAX.) INSTALL HOOK MOUNTED EXTINGUISHERS AT STRUCTURAL COLUMNS IN WAREHOUSE AREA AS REQUIRED BY LOCAL FIRE AUTHORITY
- FURNISH AND INSTALL EXPANSION JOINTS AND COMPRESSIVE FILLER WHERE CONCRETE PLATWORK MEETS VERTICAL SURFACES(WALLS, CURBS, ECT.) SEE STRUCTURAL FOR ISOLATION AND CONTROL JOINT LOCATIONS.
- FURNISH AND INSTALL COMPRESSIVE FILLER AND CAULKING AT EXTERIOR SIDE OF PANEL JOINTS UP AND OVER TOP OF WALL, DOWN BACK SIDE OF PARAPET TO ROOF FLASHING.

KEY NOTES:

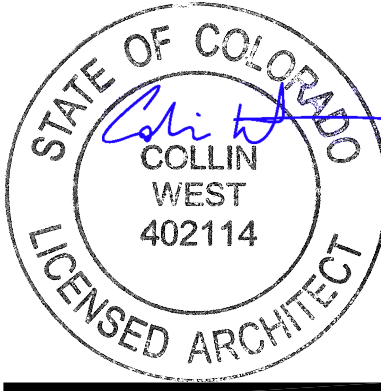
- STRUCTURAL CONCRETE FLOOR SLAB- SEE STRUDTUAL DWGS AND SEE SPEC FOR FLATNESS REQUIREMENTS. PROVIDE 15 MIL STEGO WRAP VAPOR BARRIER BELOW SLAB
- WAREHOUSE RACKING AND EQUIPMENT BY OWNER- TYPICAL
- CONCRETE PANEL JOINT. SEE DETAIL 5/A8.2.
- DOCK LEVELER. SEE SPEC
- ROOF DRAIN LEADER TO BE WRAPPED WITH INSULATION FROM FLOOR TO ROOF DRAIN ABOVE. SEE PLUMBING DWGS.
- CONCRETE FILLED PIPE BOLLARD. SEE DETAIL 3/A8.1.
- EXTERIOR METAL STAIRS, PAINTED. SEE DETAIL 5/A8.1 & 6/A8.1.
- SLOPE EDGE OF SLAB AT ALL OVERHEAD DOORS. 1/4" PER FOOT FROM 18" INSIDE TO OUTSIDE EDGE
- ELECTRICAL GEAR AND PANELS. SEE ELEC DWGS.
- PASSANGER ELEVATOR. SEE SPEC.
- 4" FURRING AT EXTERIOR WALLS IN OFFICE AREAS. SEE WALL SECTIONS AND FINISH PLANS.
- HEAVY DUTY ADJUSTABLE SHELVES IN JANITOR AND STORAGE AS SHOWN.
- 1" INSULATED GLAZING IN ANODIZED ALUMINUM FRAME. SEE SPEC
- RETAIL SALES COUNTER. SEE DETAIL 6/ A6.1 AND ELEVATIONS 7/ A6.1
- FUTURE REFRIGERATOR AND VENDING MACHINES BY OWNER.
- GAS METER LOCATION. SEE PLUMBING.
- FIRE DEPARTMENT CONNECTION (FDC)
- ROOF LADDER TO HATCH ABOVE. SEE ROOF PLAN AND DETAILS 11/A8.2 & 12/A8.2.
- CLEAR ANOD. ALUM. STOREFRONT AND WINDOWS. SEE WINDOW TYPES SHEET A7.0
- TWO-WAY COMMUNICATION SYSTEM AT SECOND FLOOR. ELEVATOR LANDING TO BE PROVIDED BY OWNERS LOW VOLTAGE VENDOR. SYSTEM TO INCLUDE AUTOMATIC DIAL-OUT AND MONITORING WITH AUDIBLE AND VISUAL SIGNALS. SEE ELECTRICAL DRAWINGS FOR LOCATION.
- EXIT PATH FLOOR MARKINGS. 4" WIDE PAINT LINES IN SAFETY YELLOW
- FIRE DEPT KNOX BOX LOCATION.
- DOOR IDENTIFICATION SIGN "OPEN OFFICE"

CS-11276

ADAMS COUNTY
BUILDING SAFETY DIVISION
REVIEWED FOR CODE COMPLIANCE
BY: Heather Whitaker
DATE: 10/5/2023

INTERGROUP
ARCHITECTS

architecture
planning
interiors
2000 West Littleton Blvd
Littleton, Colorado 80120
P. 303.738.8877 F. 303.738.2294
www.igarch.com



copyright 2014
These plans and written material are
instruments of service and are the property of
InterGroup, Inc. and may not be duplicated,
disclosed or reproduced without the written
consent of the Architect. Infringements will be
prosecuted.

TRANSWEST PARTS WAREHOUSE & RETAIL

1350 WEST 62ND AVENUE
ADAMS COUNTY, COLORADO

DATE	DESC.
01.28.2022	BACKGROUNDS
03.09.2022	CONSTRUCTION DOC.
04.08.2022	ADDENDUM 1
04.29.2022	BLDG CMMTS
05.06.2022	CIVIL SUBMITTAL
05.25.2022	2ND BLDG CMMTS
07.22.2022	FIRE CMMTS
10.03.2022	DR/ HDWR REV.
10.26.2022	ASI #1
2.26.2022	RFI #32
07.25.2023	ASI #2

A2.1
OVERALL
FLOOR PLANS

AS-BUILTS



WALL LEGEND:

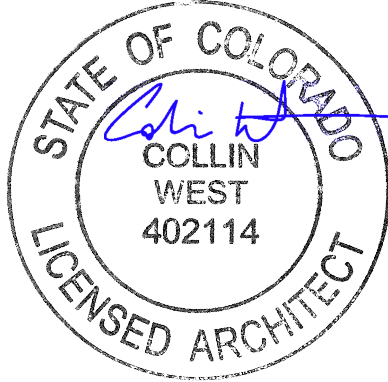
- EXTERIOR CONCRETE WALL TO STRUCTURAL DECK ABOVE. PRECAST CONCRETE WALL PANEL ARE SANDWICHED WITH CONTINUOUS INSULATION STRUCTURAL.
- CEILING HEIGHT WALL TO STRUCTURAL DECK ABOVE. 3-5/8" 25 GA. METAL STUDS AT 24" O.C. AT 1ST FLOOR. EACH SIDE TO 4" ABOVE SOUND BATT INSULATION.
- FULL HEIGHT WALL TO STRUCTURAL DECK ABOVE. 20 GA. 3-5/8" METAL STUDS AT 24" O.C. AT 1ST FLOOR. 20 GA. 3-5/8" METAL STUDS AT 16" O.C. AT 2ND FLOOR. PROVIDE 5/8" GYP BD. EACH SIDE WITH SOUND BATT INSULATION IN STUD CAVITY. INSTALL 18 GA. LONG LEG SLIP TRACK AT HEAD TO ALLOW FOR 3" COMPRESSION AND 1" EXTENSION MOVEMENT. SEE DETAILS.
- FULL HEIGHT WALL TO STRUCTURAL DECK ABOVE. 20 GA. 3-5/8" METAL STUDS AT 24" O.C. AT 1ST FLOOR. 20 GA. 3-5/8" METAL STUDS AT 16" O.C. AT 2ND FLOOR. PROVIDE 5/8" GYP BD. EACH SIDE WITH SOUND BATT INSULATION IN STUD CAVITY. INSTALL 18 GA. LONG LEG SLIP TRACK AT HEAD TO ALLOW FOR 3" COMPRESSION AND 1" EXTENSION MOVEMENT. SEE DETAILS.
- 1 HR. RATED SHAFT WALL TO STRUCTURAL DECK ABOVE. 4" METAL C-H SHAFT WALL STUDS AT 24" O.C. WITH 5/8" TYPE X GYP. BD. ON OUTSIDE FACE AND 1" FIRE SHIELD SHAFT LINER ON INSIDE FACE. U.L. DESIGN NO. 469. PROVIDE RATED SLIPHEAD AT ROOF STRUCTURE. SEE DETAILS.
- 1 HR. RATED FIRE WALL TO STRUCTURAL DECK ABOVE. 3-5/8" METAL STUDS AT 24" O.C. WITH 5/8" TYPE-X GYP. BD. BOTH SIDES. U.L. DESIGN U-419.



ADAMS COUNTY
BUILDING SAFETY DIVISION
REVIEWED FOR CODE COMPLIANCE
BY: Heather Whitaker
DATE: 10/5/2023

INTERGROUP
ARCHITECTS

architecture
planning
interiors
2000 West Littleton Blvd
Littleton, Colorado 80120
P. 303.738.8877 F. 303.738.2294
www.igarch.com



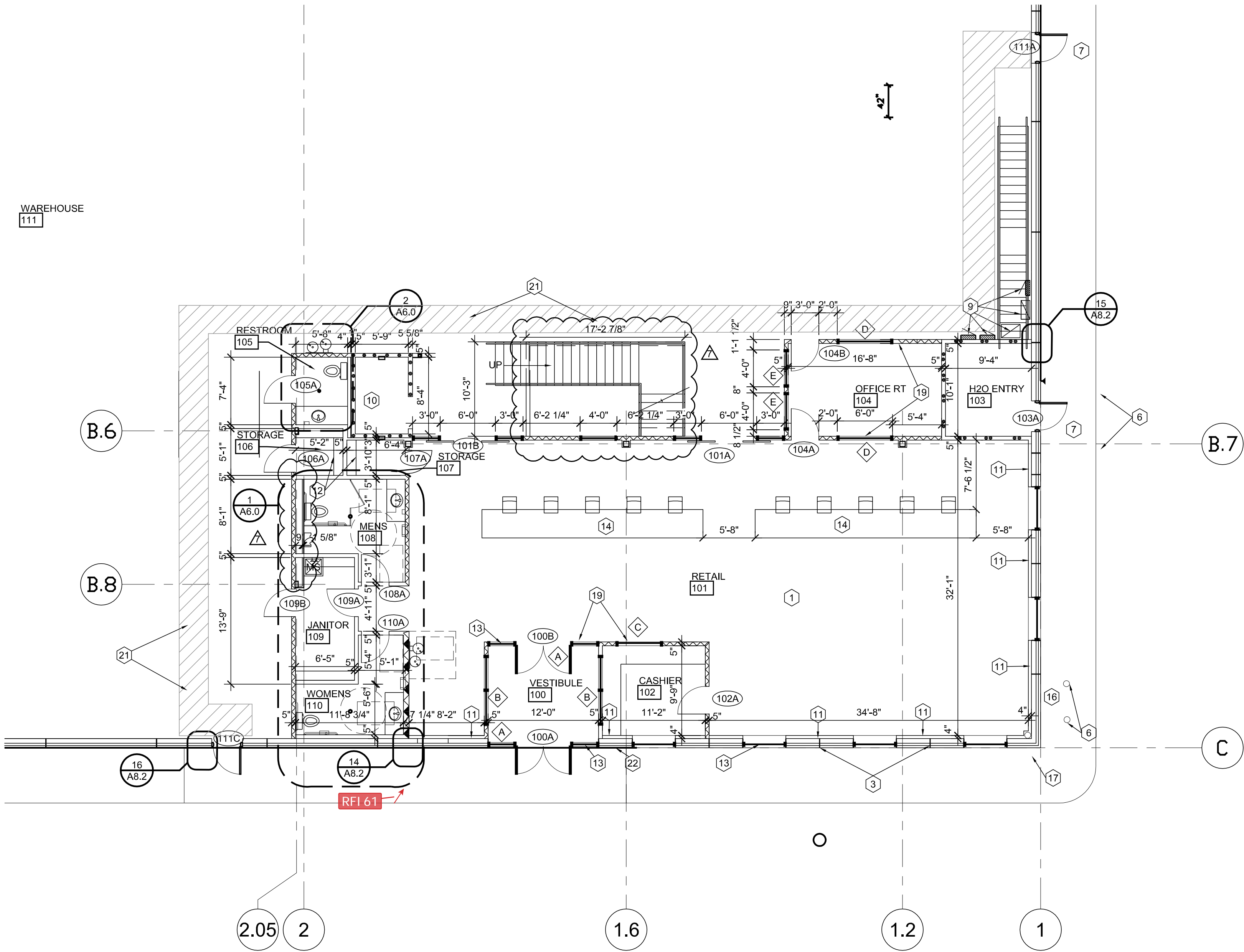
copyright 2014
These plans and written material are instruments of service and are the property of Intergroup, Inc. and may not be duplicated, disclosed or reproduced without the written consent of the Architect. Infringements will be prosecuted.

GENERAL NOTES:

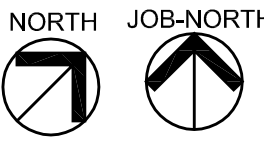
- PROVIDE CONTROL JOINTS EVERY 30 LINEAR FEET (MIN.) OF UNINTERRUPTED SURFACE AT GYPSUM BOARD WALLS AND CEILINGS.
- G.C. TO PROVIDE FIRE EXTINGUISHER ABC 10# THROUGHOUT. TRAVEL DISTANCE BETWEEN EXTINGUISHERS NOT TO EXCEED 75' (MAX.) INSTALL HOOK MOUNTED EXTINGUISHERS AT STRUCTURAL COLUMNS IN WAREHOUSE AREA AS REQUIRED BY LOCAL FIRE AUTHORITY
- FURNISH AND INSTALL EXPANSION JOINTS AND COMPRESSIVE FILLER WHERE CONCRETE FLATWORK MEETS VERTICAL SURFACES(WALLS, CURBS, ECT.) SEE STRUCTURAL FOR ISOLATION AND CONTROL JOINT LOCATIONS.
- FURNISH AND INSTALL COMPRESSIVE FILLER AND CAULKING AT EXTERIOR SIDE OF PANEL JOINTS UP AND OVER TOP OF WALL, DOWN BACK SIDE OF PARAPET TO ROOF FLASHING.

KEY NOTES:

- STRUCTURAL CONCRETE FLOOR SLAB- SEE STRUDTUAL DWGS AND SEE SPEC FOR FLATNESS REQUIREMENTS. PROVIDE 15 MIL STEGO WRAP VAPER BARRIER BELOW SLAB
- WAREHOUSE RACKING AND EQUIPMENT BY OWNER - TYPICAL
- CONCRETE PANEL JOINT. SEE DETAIL 5/A8.2.
- DOCK LEVELER. SEE SPEC
- ROOF DRAIN LEADER TO BE WRAPPED WITH INSULATION FROM FLOOR TO ROOF DRAIN ABOVE. SEE PLUMBING DWGS.
- CONCRETE FILLED PIPE BOLLARD. SEE DETAIL 3/A8.1.
- EXTERIOR METAL STAIRS, PAINTED. SEE DETAIL 5/A8.1 & 6/A8.1.
- SLOPE EDGE OF SLAB AT ALL OVERHEAD DOORS. 1/4" PER FOOT FROM 18" INSIDE TO OUTSIDE EDGE
- ELECTRICAL GEAR AND PANELS. SEE ELEC DWGS.
- PASSANGER ELEVATOR. SEE SPEC.
- 4" FURRING AT EXTERIOR WALLS IN OFFICE AREAS. SEE WALL SECTIONS AND FINISH PLANS.
- HEAVY DUTY ADJUSTABLE SHELVES IN JANITOR AND STORAGE AS SHOWN.
- 1" INSULATED GLAZING IN ANODIZED ALUMINUM FRAME. SEE SPEC
- RETAIL SALES COUNTER. SEE DETAIL 6/ A6.1 AND ELEVATIONS 7/ A6.1
- FUTURE REFRIGERATOR AND VENDING MACHINES BY OWNER.
- GAS METER LOCATION. SEE PLUMBING.
- FIRE DEPARTMENT CONNECTION (FDC)
- ROOF LADDER TO HATCH ABOVE. SEE ROOF PLAN AND DETAILS 11/A8.2 & 12/A8.2.
- CLEAR ANOD. ALUM. STOREFRONT AND WINDOWS. SEE WINDOW TYPES SHEET A7.0
- TWO-WAY COMMUNICATION SYSTEM AT SECOND FLOOR. ELEVATOR LANDING TO BE PROVIDED BY OWNERS LOW VOLTAGE VENDOR. SYSTEM TO INCLUDE AUTOMATIC DIAL-OUT AND MONITORING WITH AUDIBLE AND VISUAL SIGNALS. SEE ELECTRICAL DRAWINGS FOR LOCATION.
- EXIT PATH FLOOR MARKINGS. 4" WIDE PAINT LINES IN SAFETY YELLOW
- FIRE DEPT KNOX BOX LOCATION.
- DOOR IDENTIFICATION SIGN "OPEN OFFICE"



1 ENLARGED FIRST FLOOR PLAN
SCALE: 1/8" = 1'-0"



TRANSWEST PARTS
WAREHOUSE & RETAIL
1350 WEST 62ND AVENUE
ADAMS COUNTY, COLORADO

DATE	DESC.
01.28.2022	BACKGROUNDS
03.09.2022	CONSTRUCTION DOC.
04.08.2022	ADDENDUM 1
04.29.2022	BLDG CMMTS
05.06.2022	CIVIL SUBMITTAL
05.25.2022	2ND BLDG CMMTS
07.22.2022	FIRE CMMTS
10.03.2022	DR/ HDWR REV.
10.26.2022	ASI #1
2.26.2022	RFI #32
07.25.2023	ASI #2

A2.2
ENLARGED FIRST
FLOOR PLAN

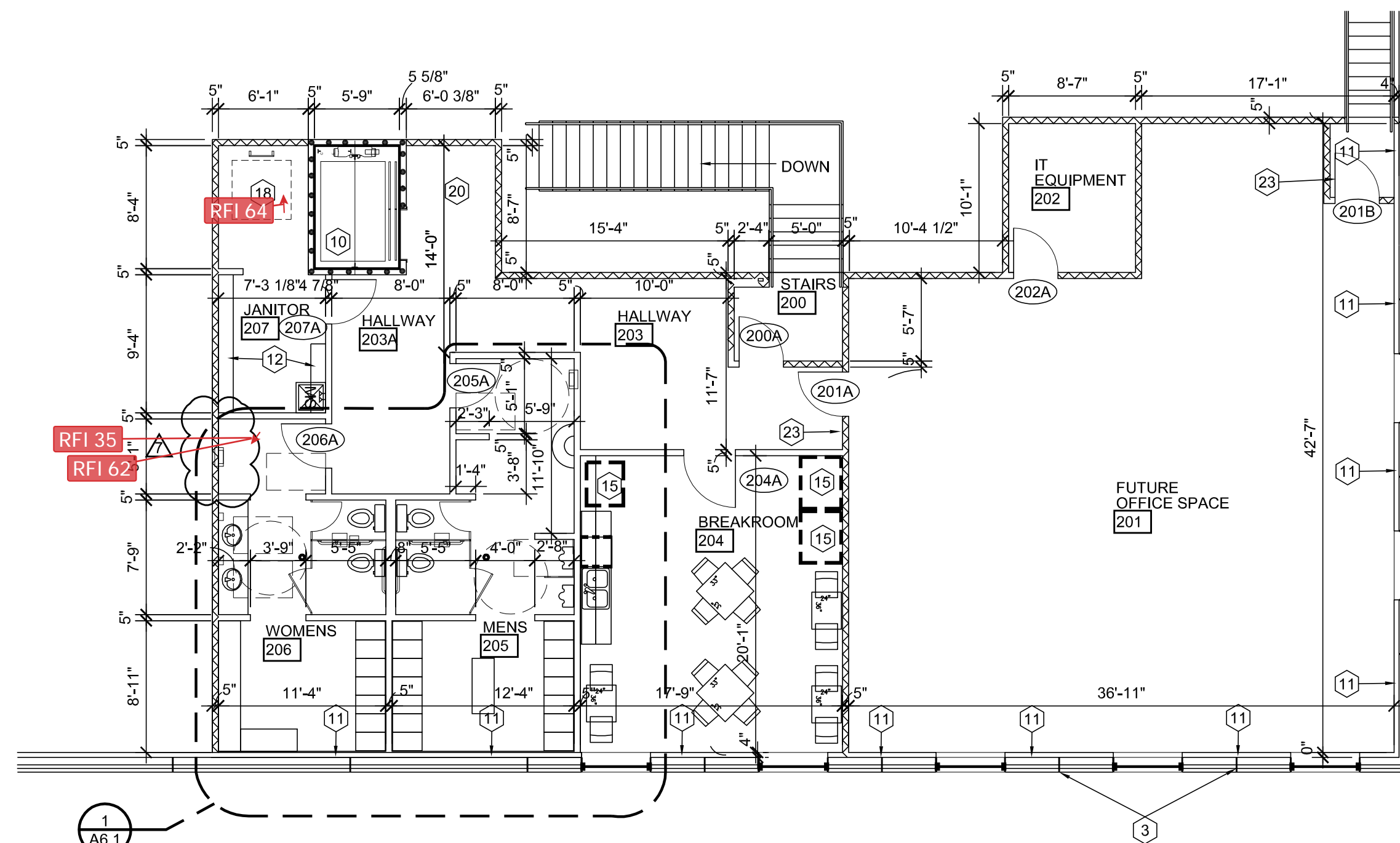
AS-BUILTS





- A. PROVIDE CONTROL JOINTS EVERY 30 LINEAR FEET (MIN.) OF UNINTERRUPTED SURFACE AT GYPSUM BOARD WALLS AND CEILINGS.
- B. G.C. TO PROVIDE FIRE EXTINGUISHER ABC 10# THROUGHOUT. TRAVEL DISTANCE BETWEEN EXTINGUISHERS NOT TO EXCEED 75' (MAX). INSTALL HOOK MOUNTED EXTINGUISHERS AT STRUCTURAL COLUMNS IN WAREHOUSE AREA AS REQUIRED BY LOCAL FIRE AUTHORITY
- C. FURNISH AND INSTALL EXPANSION JOINTS AND COMPRESSIVE FILLER WHERE CONCRETE FLATWORK MEETS VERTICAL SURFACES(WALLS, CURBS, ECT.) SEE STRUCTURAL FOR ISOLATION AND CONTROL JOINT LOCATIONS.
- D. FURNISH AND INSTALL COMPRESSIVE FILLER AND CAULKING AT EXTERIOR SIDE OF PANEL JOINTS UP AND OVER TOP OF WALL, DOWN BACK SIDE OF PARAPET TO ROOF FLASHING.

1. STRUCTURAL CONCRETE FLOOR SLAB- SEE STRUTTUAL DWGS AND SEE SPEC FOR FLATNESS REQUIREMENTS. PROVIDE 15 MIL STEGO WRAP VAPER BARRIER BELOW SLAB
2. WAREHOUSE RACKING AND EQUIPMENT BY OWNER - TYPICAL.
3. CONCRETE PANEL JOINT. SEE DETAIL 5/A8.2.
4. DOCK LEVELER. SEE SPEC
5. ROOF DRAIN LEADER TO BE WRAPPED WITH INSULATION FROM FLOOR TO ROOF DRAIN ABOVE. SEE PLUMBING DWGS.
6. CONCRETE FILLED PIPE BOLLARD. SEE DETAIL 3/A8.1.
7. EXTERIOR METAL STAIRS, PAINTED. SEE DETAIL 5/A8.1 & 6/A8.1.
8. SLOPE EDGE OF SLAB AT ALL OVERHEAD DOORS. 1/4" PER FOOT FROM 18" INSIDE TO OUTSIDE EDGE
9. ELECTRICAL GEAR AND PANELS, SEE ELEC DWGS.
10. PASSANGER ELEVATOR. SEE SPEC.
11. 4" FURRING AT EXTERIOR WALLS IN OFFICE AREAS. SEE WALL SECTIONS AND FINISH PLANS.
12. HEAVY DUTY ADJUSTABLE SHELVES IN JANITOR AND STORAGE AS SHOWN.
13. 1" INSULATED GLAZING IN ANODIZED ALUMINUM FRAME. SEE SPEC
14. RETAIL SALES COUNTER. SEE DETAIL 6/ A6.1 AND ELEVATIONS 7/ A6.1
15. FUTURE REFRIGERATOR AND VENDING MACHINES BY OWNER.
16. GAS METER LOCATION. SEE PLUMBING.
17. FIRE DEPARTMENT CONNECTION (FDC)
18. ROOF LADDER TO HATCH ABOVE. SEE ROOF PLAN AND DETAILS 11/A8.2 & 12/A8.2.
19. CLEAR ANOD. ALUM. STOREFRONT AND WINDOWS. SEE WINDOW TYPES SHEET A7.0
20. TWO-WAY COMMUNICATION SYSTEM AT SECOND FLOOR ELEVATOR LANDING TO BE PROVIDED BY OWNERS LOW VOLTAGE VENDOR. SYSTEM TO INCLUDE AUTOMATIC DIAL-OUT AND MONITORING WITH AUDIBLE AND VISUAL SIGNALS. SEE ELECTRICAL DRAWINGS FOR LOCATION.
21. EXIT PATH FLOOR MARKINGS. 4" WIDE PAINT LINES IN SAFETY YELLOW
22. FIRE DEPT KNOX BOX LOCATION.
23. DOOR IDENTIFICATION SIGN "OPEN OFFICE"



NORTH JOB-NORTH