

***For Lease /
Build-To-Suit***

Outlot Parcel Available

New Medical/Office Park Development

100th Street & SE 37th Street

PROPERTY INFORMATION

GRIMES, IOWA



- ▶ Ideal Location for Coffee Shop or Restaurant
- ▶ Drive-Through Capabilities
- ▶ Outlot Site
- ▶ Adjacent to Iowa Ortho Ambulatory Surgery Care
- ▶ Excellent Access to Interstate 80/35
- ▶ High growth area of the Des Moines Metro
- ▶ 100th Street & SE 37th Street to be Four Lanes in near future
- ▶ Zoning C2

CONTACT:

TIM WIRTA |

tim.wirta@terrus.com | 515.314.7779 (C)



TERRUS®
Real Estate Group

100 Court Avenue | Suite 400 | Des Moines, Iowa 50309 | 515.471.4400 PH
www.terrus.com

**Brokerage
Services**

**Property
Management**

**Home Owners
Associations**

Investments

**Project
Management**

**Maintenance
Services**

**For Lease /
Build-To-Suit**

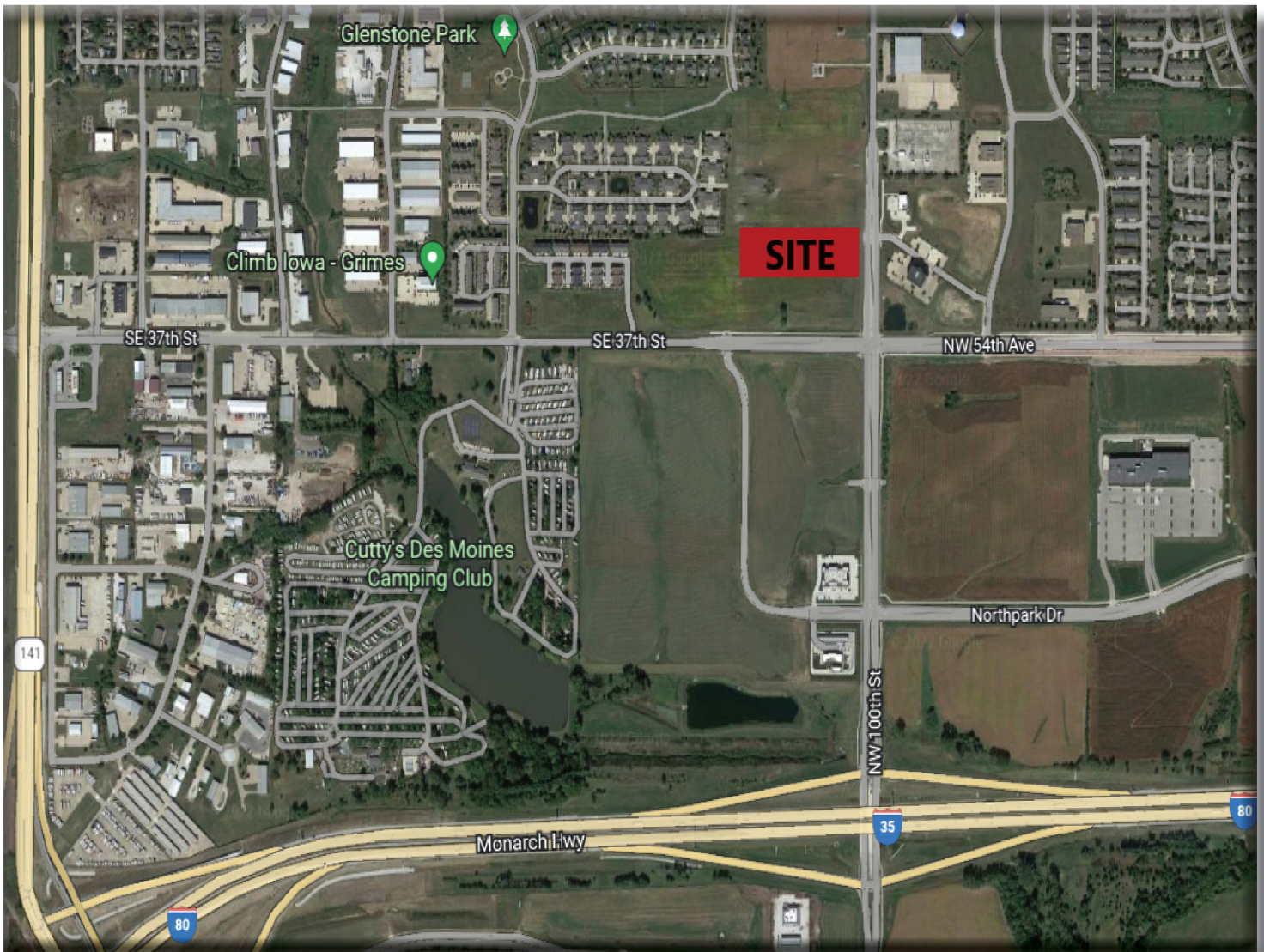
Outlot Parcel Available

New Medical/Office Park Development

100th Street & SE 37th Street

LOCATION INFORMATION

GRIMES, IOWA



Demographics (Est. 2023)	1 mile	3 miles	5 miles
Population	7,773	51,645	135,343
Households	3,146	20,187	53,487
Avg. HH Income	\$116,965	\$135,263	\$125,420
Median HH Income	\$84,968	\$95,724	\$90,041
Median Age	36.4	38.6	38.6



100 Court Avenue, Suite 400, Des Moines, Iowa 50309

515.471.4400 Phone | 515.471.4304 Fax

www.terrus.com



We obtained the information herein from sources we believe to be reliable but is not warranted as to accuracy and may change or be updated without notice. Seller or landlord makes no representation as to the environmental condition of the property and recommends purchaser's or tenant's independent investigation.

**For Lease /
Build-To-Suit**

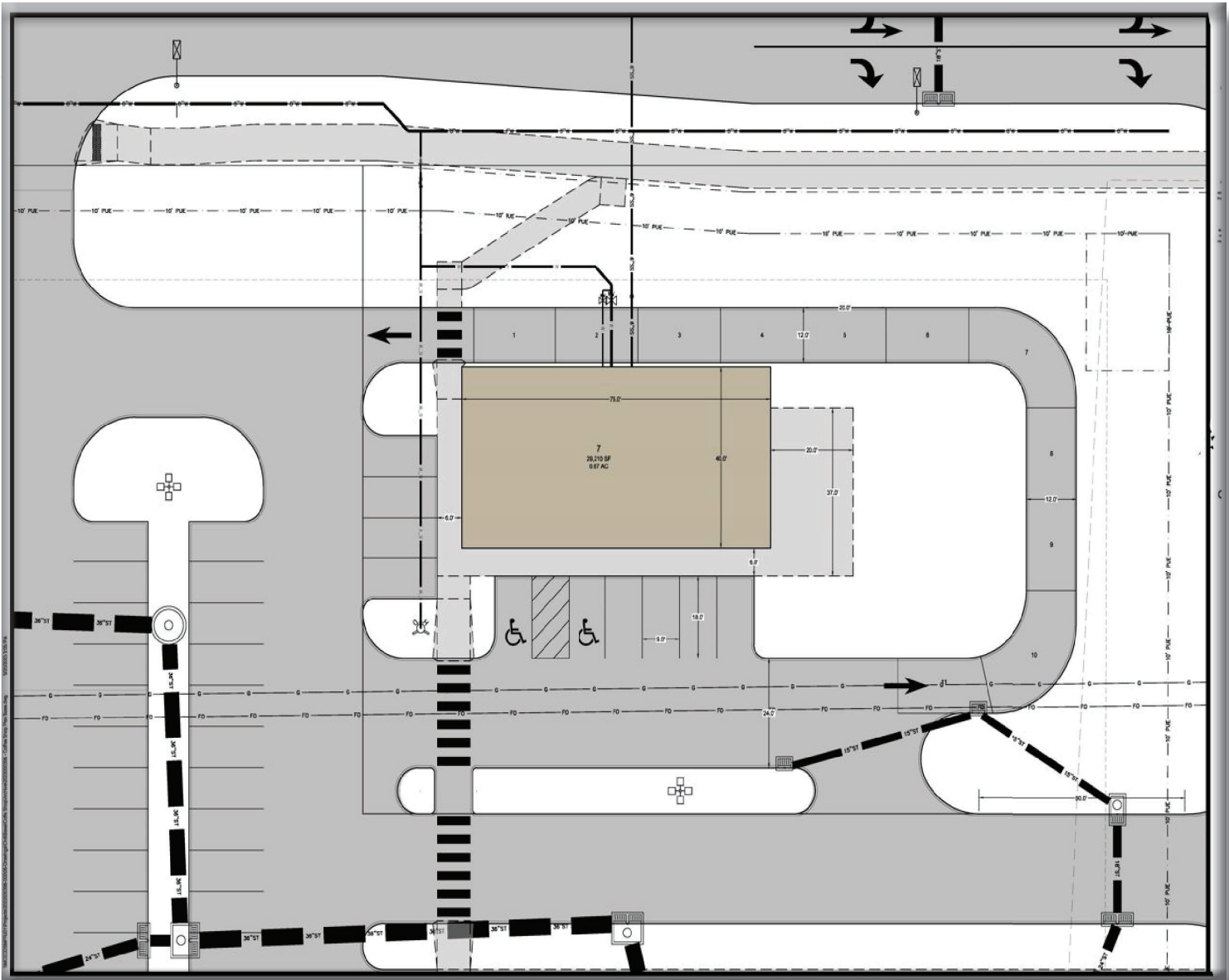
Outlot Parcel Available

New Medical/Office Park Development

100th Street & SE 37th Street

LOCATION INFORMATION

GRIMES, IOWA



**TERRUS**[®]
Real Estate Group

100 Court Avenue, Suite 400, Des Moines, Iowa 50309

515.471.4400 Phone | 515.471.4304 Fax

www.terrus.com



We obtained the information herein from sources we believe to be reliable but is not warranted as to accuracy and may change or be updated without notice. Seller or landlord makes no representation as to the environmental condition of the property and recommends purchaser's or tenant's independent investigation.

**For Lease /
Build-To-Suit**

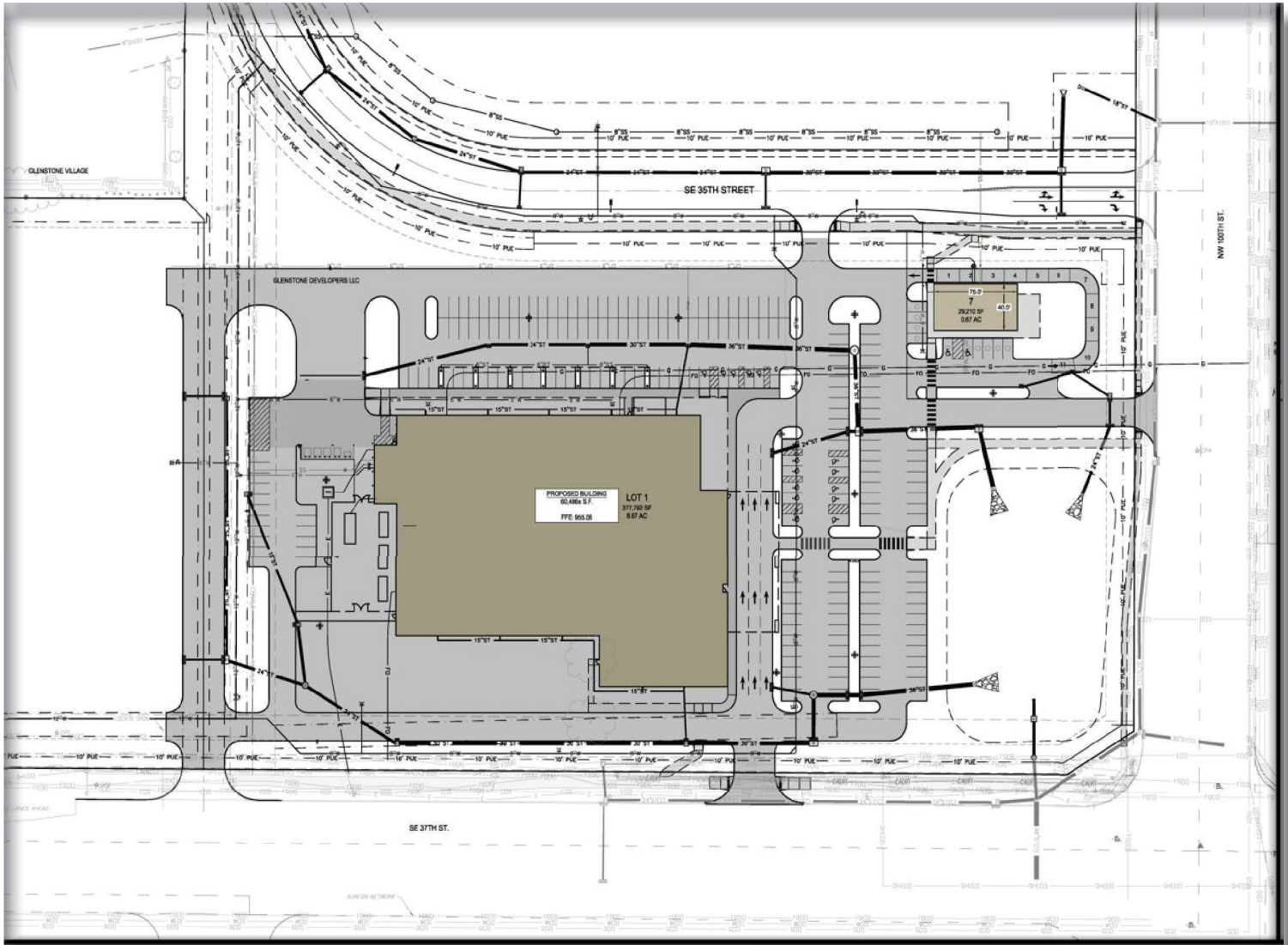
Outlot Parcel Available

New Medical/Office Park Development

100th Street & SE 37th Street

LOCATION INFORMATION

GRIMES, IOWA



**TERRUS®**
Real Estate Group

100 Court Avenue, Suite 400, Des Moines, Iowa 50309

515.471.4400 Phone | 515.471.4304 Fax

www.terrus.com



We obtained the information herein from sources we believe to be reliable but is not warranted as to accuracy and may change or be updated without notice. Seller or landlord makes no representation as to the environmental condition of the property and recommends purchaser's or tenant's independent investigation.