



HOULIHAN LAWRENCE
COMMERCIAL

2365 Boston Post Rd

Larchmont, NY 10538

LARCHMONT MEDICAL
PLAZA

2365

Russell A. Detres

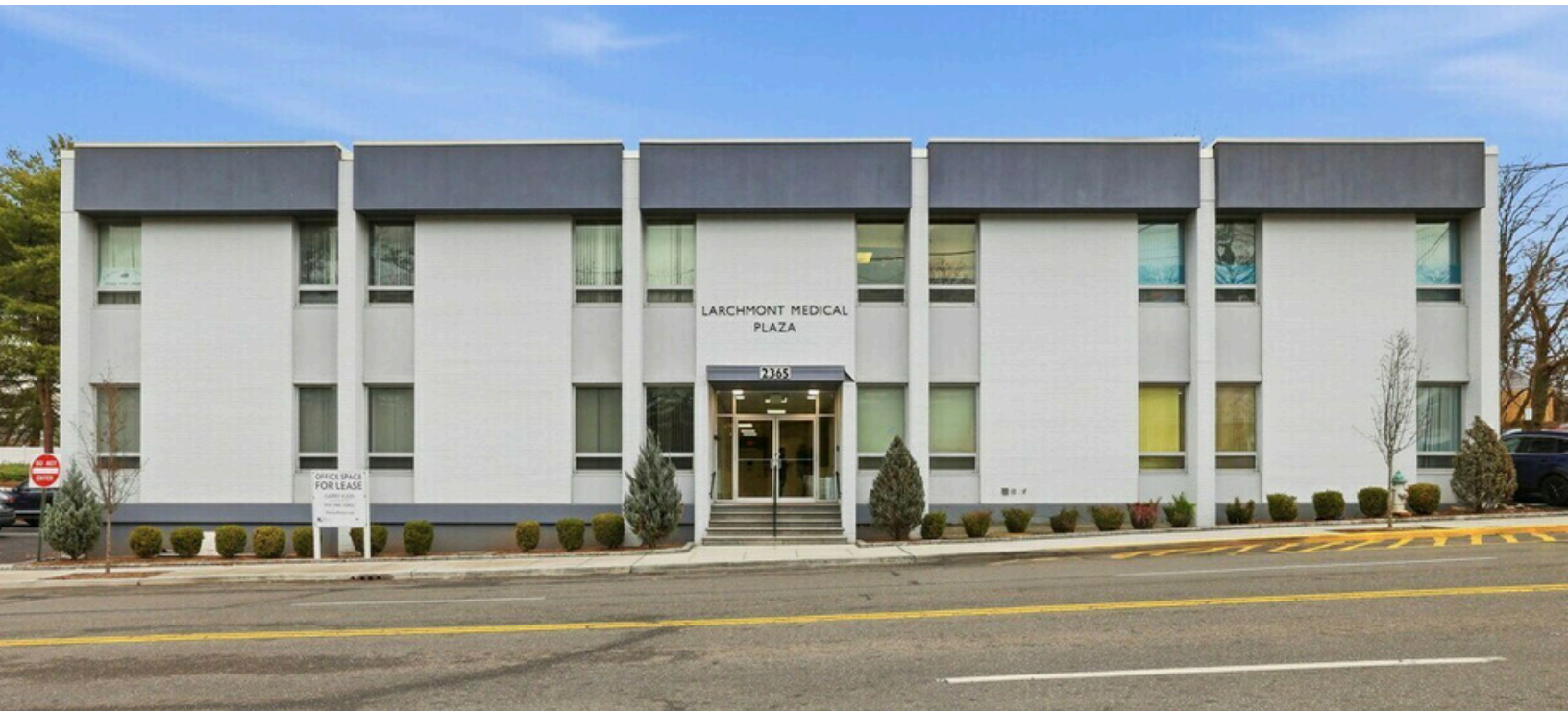
RE Salesperson
914 548 6700
rdetres@houlihanlawrence.com

Garry Klein

Associate Broker | Regional Manager
914 588 1585
gklein@houlihanlawrence.com

FOR LEASE





Property Description

Larchmont Medical at 2365 Boston Post Road offers a rare opportunity to lease turnkey medical office suites in one of Westchester’s most established healthcare corridors.

The building is professionally managed, recently renovated, and features ample on-site parking with outstanding visibility along the Boston Post Road.

Two immediately available suites on the 1st floor ±2,400 SF each provide efficient medical layouts with a mix of open treatment areas, private offices, ADA-compliant restrooms, and support space—ideal for primary care, specialty practices, or allied medical users.

With strong daily traffic, excellent access to I-95, Metro-North, and surrounding communities, these suites offer a high-quality, convenient setting for patient-focused practices looking to establish or expand in Larchmont.

Suite Features:

- New buildout - 1st floor
- Signage
- Kitchen
- Central Heating
- Air Conditioning

Offering Summary

Lease Rate:	\$28.00 SF
Availability:	Immediate
Suite 101:	Medical 2,420 SF \$28.00/SF/MG
Suite 103:	Medical 2,458 SF \$28.00/SF/MG
Building Size:	18,312 SF

Exterior

FOR LEASE

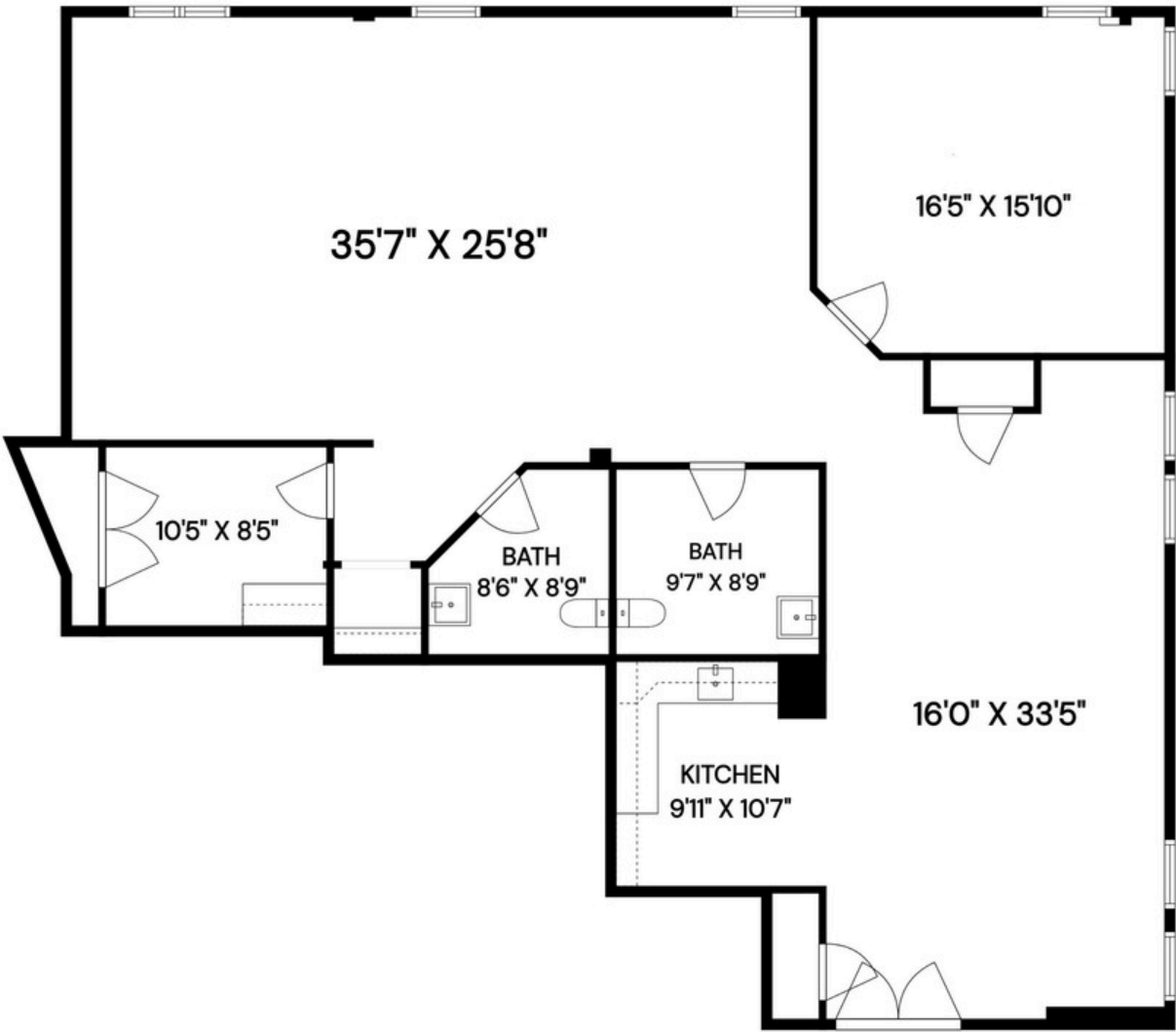


Houlihan Lawrence Commercial
800 Westchester Ave. Ste. N517
Rye Brook, NY 10573
[View Website](#)



FIRST FLOOR

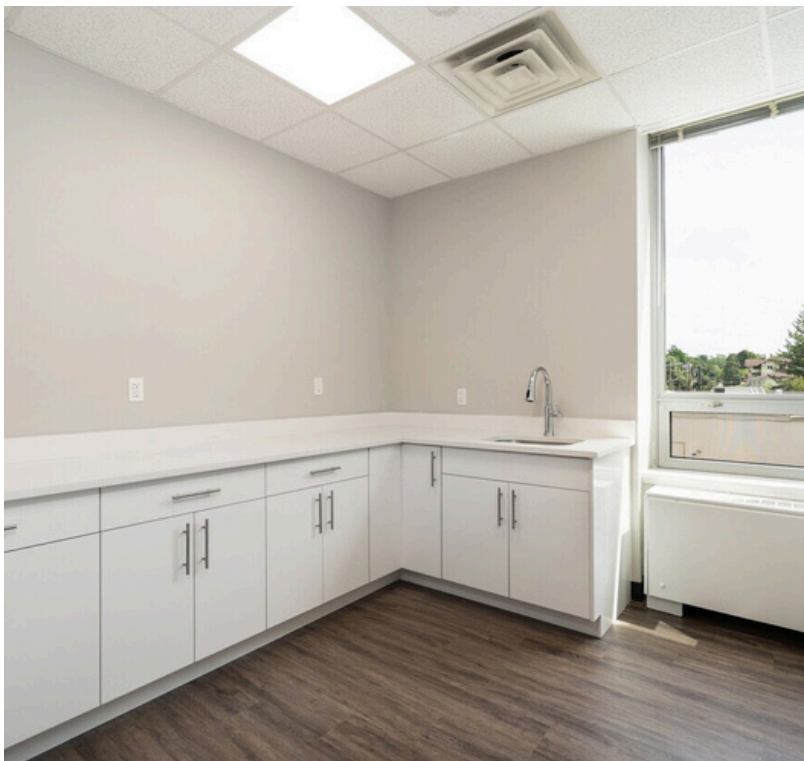
2365 BOSTON POST RD, LARCHMONT, NY 10538



Disclaimer: Floor plan measurements are approximate and are for illustrative purposes only. While we do not doubt the floor plans accuracy, all measurements should be verified. Digital Homes Photography 2026.

Interior - Example Build-Out

FOR LEASE



Houlihan Lawrence Commercial
800 Westchester Ave. Ste. N517
Rye Brook, NY 10573
[View Website](#)



Aerial

FOR LEASE

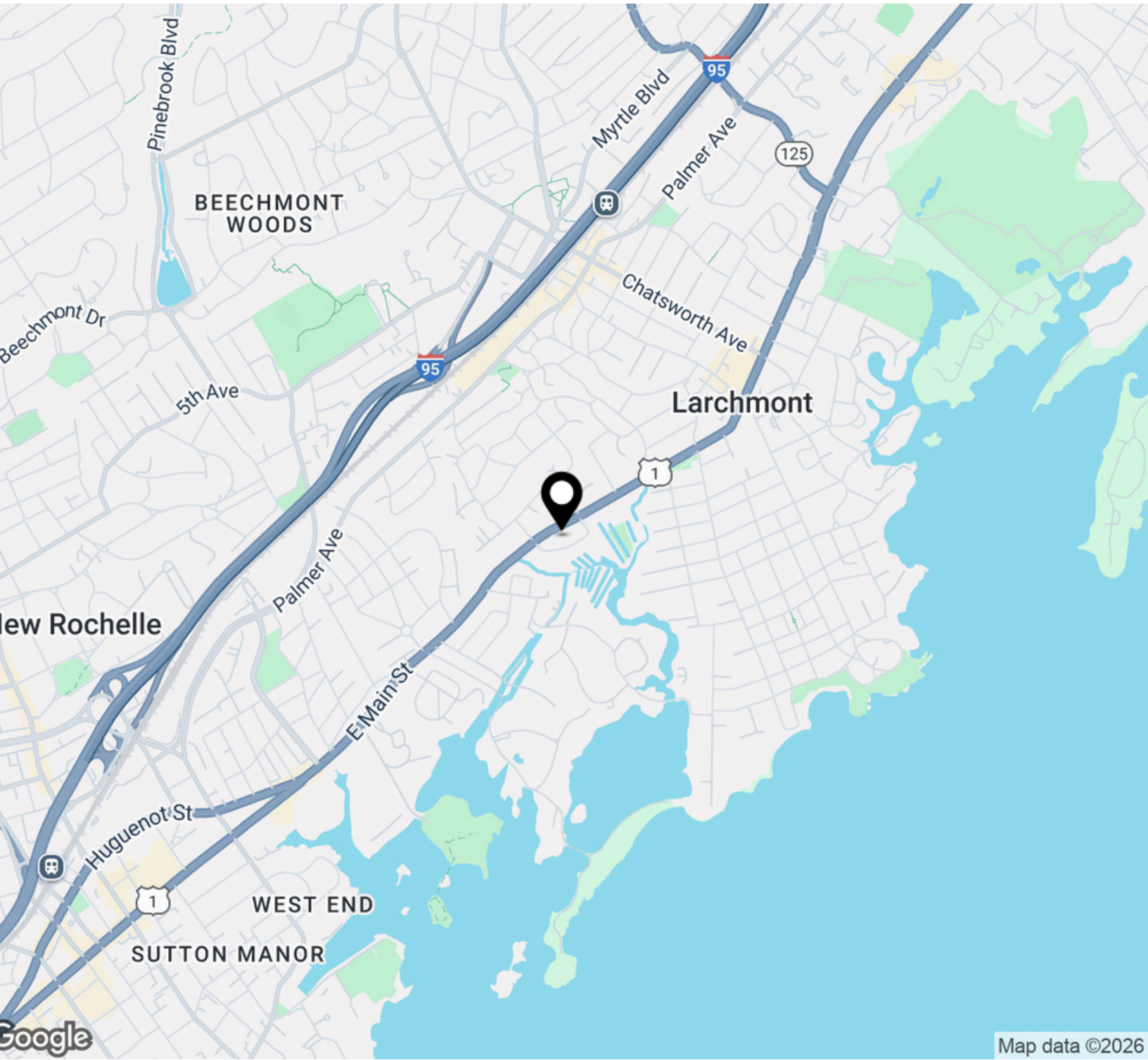


Houlihan Lawrence Commercial
800 Westchester Ave. Ste. N517
Rye Brook, NY 10573
[View Website](#)



Regional Map

FOR LEASE

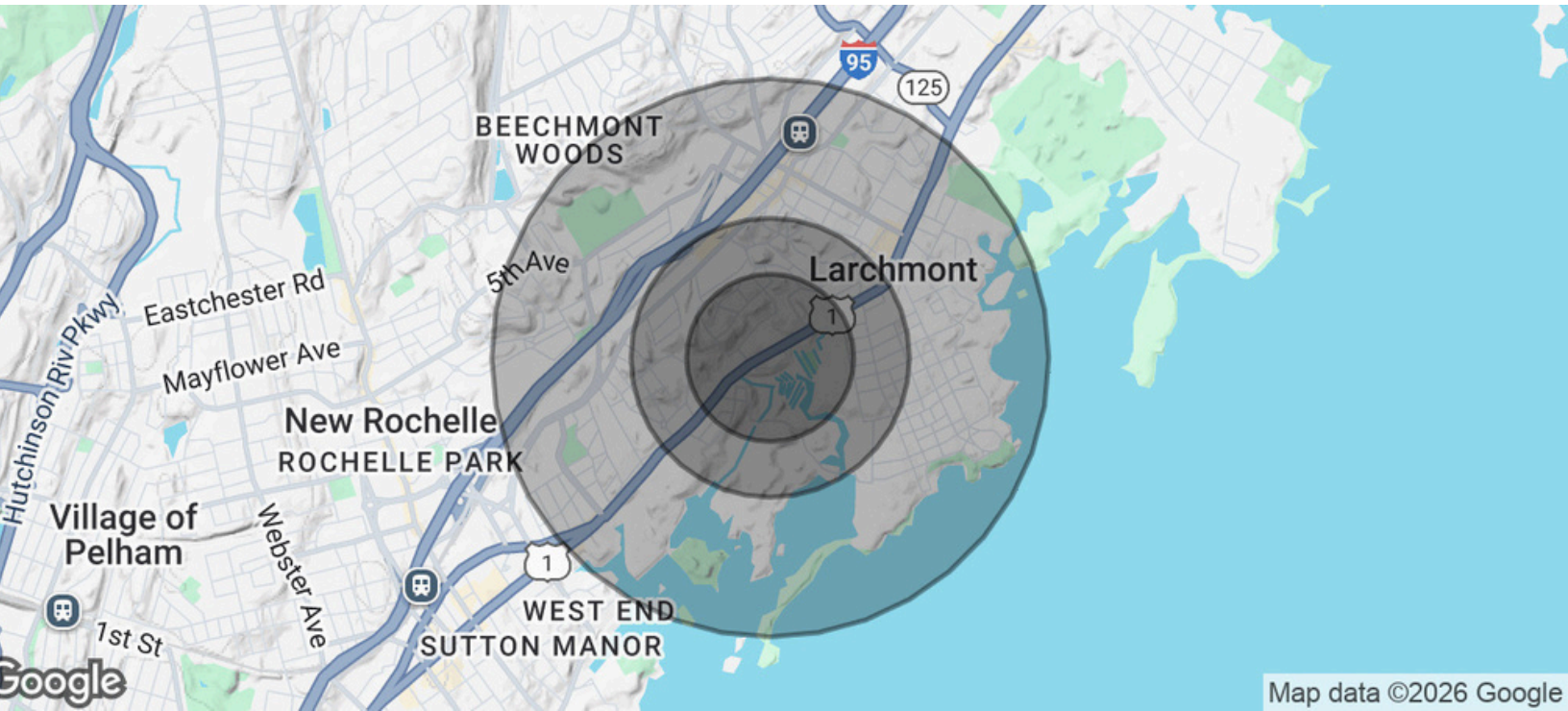


Houlihan Lawrence Commercial
800 Westchester Ave. Ste. N517
Rye Brook, NY 10573
[View Website](#)



Demographics Map & Report

FOR LEASE



Population	0.3 Miles	0.5 Miles	1 Mile
TotalPopulation	1,515	5,400	16,122
Average Age	41	41	41
Average Age (Male)	39	40	39
Average Age (Female)	42	42	42

Households & Income	0.3 Miles	0.5 Miles	1 Mile
Total Households	596	2,114	6,024
# of Persons per HH	2.5	2.6	2.7
Average HH Income	\$224,223	\$211,572	\$210,148
Average House Value	\$1,191,676	\$1,166,129	\$1,095,63

Demographicsdata derived from AlphaMap

2



Houlihan Lawrence Commercial
800 Westchester Ave. Ste. N517
Rye Brook, NY 10573
[View Website](#)

