

FOR SALE

LAND WITH
ARCHITECTURAL
PLANS

4215-4219 NE 6th Ave
Portland, OR 97214

Shovel-ready!
Includes beautifully
rendered plans for 2
townhomes w/ADUs

LOCATION!

Popular Northeast King
neighborhood - close to MLK
Blvd, Alberta Arts District,
the Williams Corridor, and
easy access to Mississippi



Eli Haworth-Kaufka
Principal Broker
503-502-9403
eli@cloudcityrealty.com



PORTLAND, OR

CLOUD CITY REALTY



\$525,000

HIGHLIGHTS



- Two permit-ready lots
- Power, water hook-ups, shoring are complete
- Desirable, walkable neighborhood, blocks from farmer's market, parks, grocery, shopping & restaurants
- 2 blocks from Going St. bike boulevard
- Easy access to MLK Blvd and freeways

Total 5,000 sf



Rear view



CLOUD CITY
REALTY

ELI HAWORTH-KAUFKA
503-502-9403
eli@cloudcityrealty.com

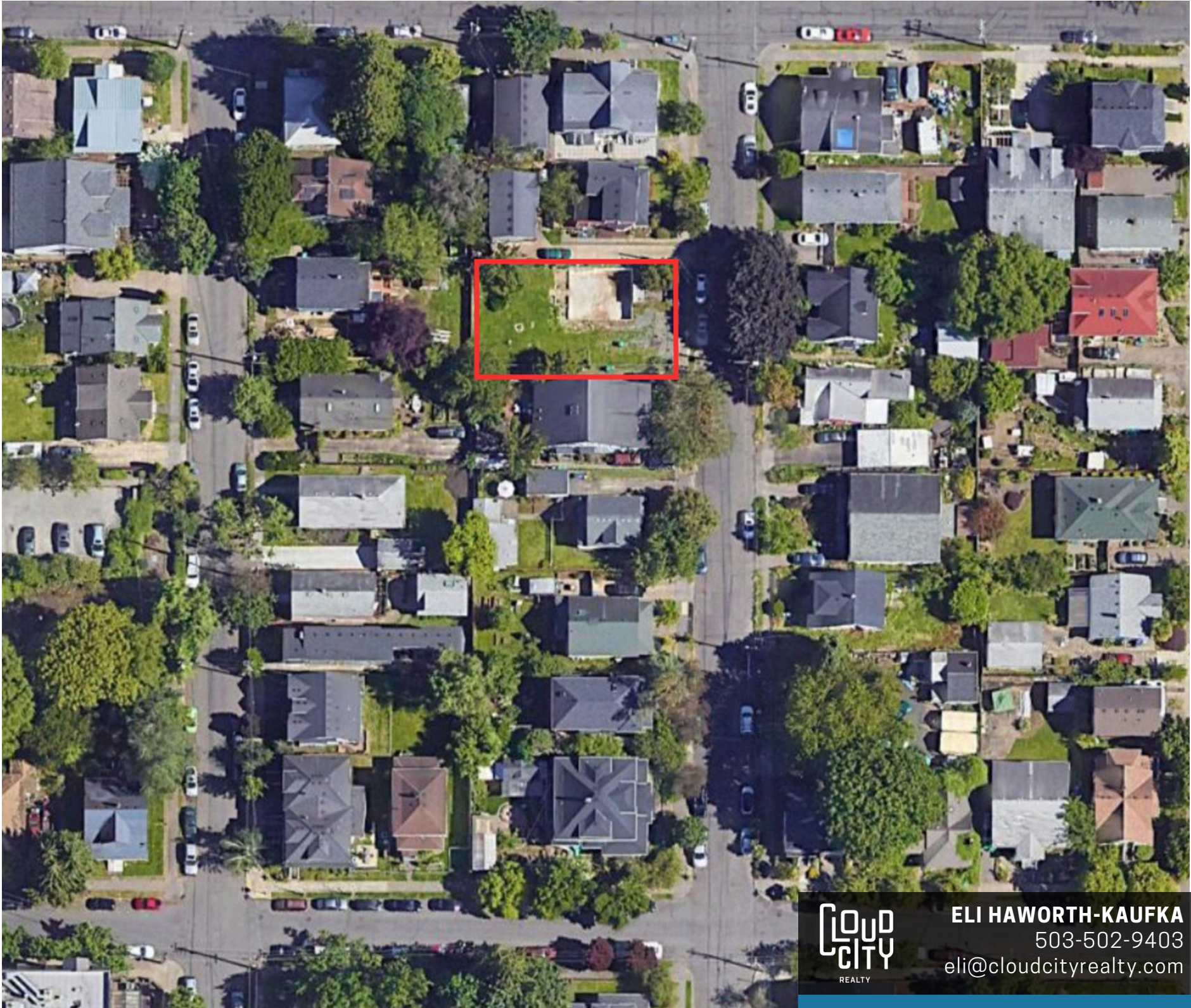
Cloud City Realty
5901 NE Shaver St
Portland, OR 97213
www.cloudcityrealty.com
971-339-1456





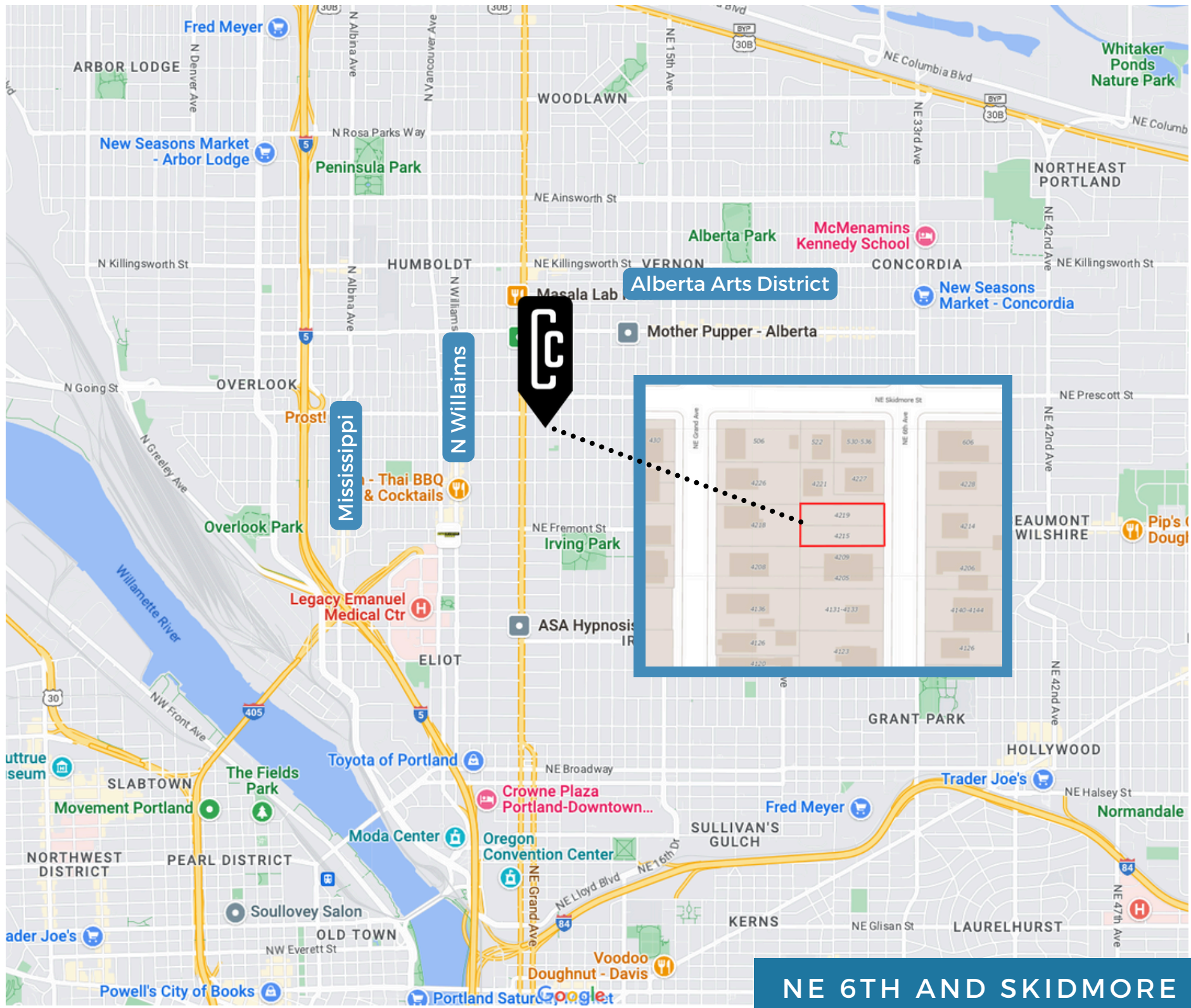
Cloud City Realty
5901 NE Shaver St
Portland, OR 97213
www.cloudcityrealty.com
971-339-1456

HIGHLIGHTS



ELI HAWORTH-KAUFKA
503-502-9403
eli@cloudcityrealty.com

Cloud City Realty
5901 NE Shaver St
Portland, OR 97213
www.cloudcityrealty.com
971-339-1456



Alberta Arts District

N Williams

Mississippi

NE 6TH AND SKIDMORE

