

FOR SALE

# MOORESVILLE INDUSTRIAL PARK ± 15 AC DEVELOPMENT SITE

25150 WILL McCOMB DRIVE, TANNER, AL 35671

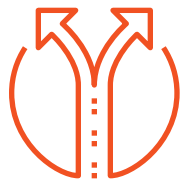
**FOUNDRY**  
COMMERCIAL

INVESTMENT  
ADVISORY  
GROUP

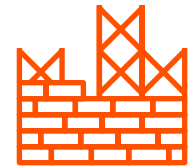
±15 AC DEVELOPMENT SITE/  
BUILD-TO-SUIT OPPORTUNITY

HUNTSVILLE, ALABAMA MSA

HIGHLIGHTS



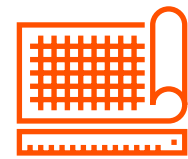
**IDEALLY LOCATED AT FIRST INTERCHANGE ON I-565**



**BUILD-TO-SUIT OR SPECULATIVE DEVELOPMENT OPPORTUNITY**



**FAST-GROWING HUNTSVILLE, AL MSA**

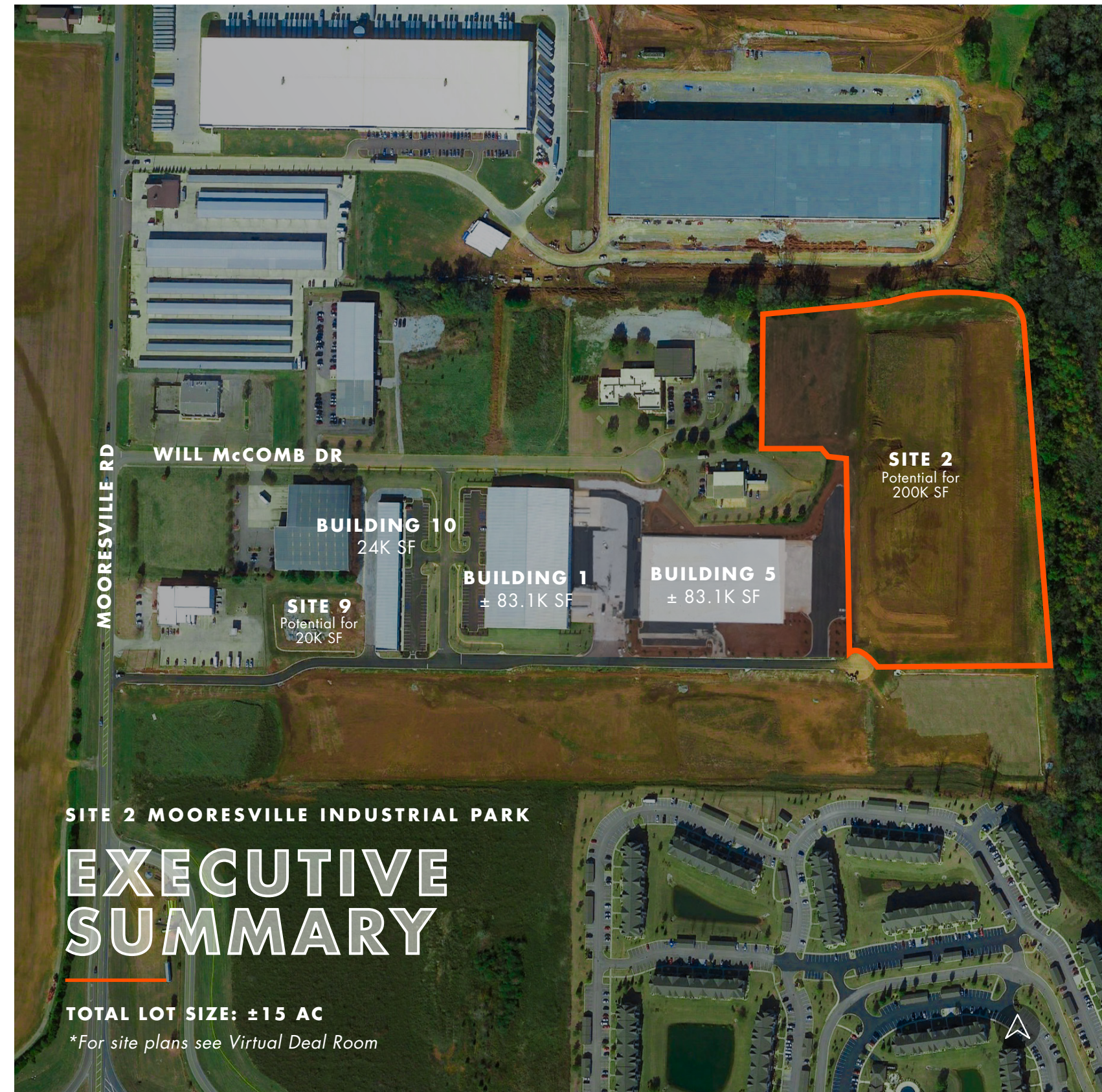


**15 BUILDABLE ACRES ON A PRE-GRADED SITE**

PROPERTY SUMMARY

<b>ADDRESS</b>	25150 Will McComb Drive, Tanner, AL 35671
<b>POTENTIAL DEVELOPMENT</b>	Up to 200,000 SF Warehouse
<b>LOT SIZE</b>	Approx. ±15 AC
<b>ZONING</b>	CIP – Commercial Industrial Park District
<b>COUNTY</b>	Limestone
<b>SITE DIMENSIONS</b>	1,000' x 692'
<b>TOPOGRAPHY</b>	Level
<b>EXISTING IMPROVEMENTS</b>	None
<b>UTILITIES</b>	Available
<b>COMPLETED SITE WORK</b>	Rough pad ready

This site is within Mooresville Industrial Park, which also includes 190,320 SF of newly constructed buildings in addition to this 15 AC of development land. Each building and site within the park is available individually for sale, or the entire park can be purchased as a single acquisition.





CLICK HERE FOR PARK OVERVIEW VIDEO



MOORESVILLE INDUSTRIAL PARK

# LOCATION OVERVIEW

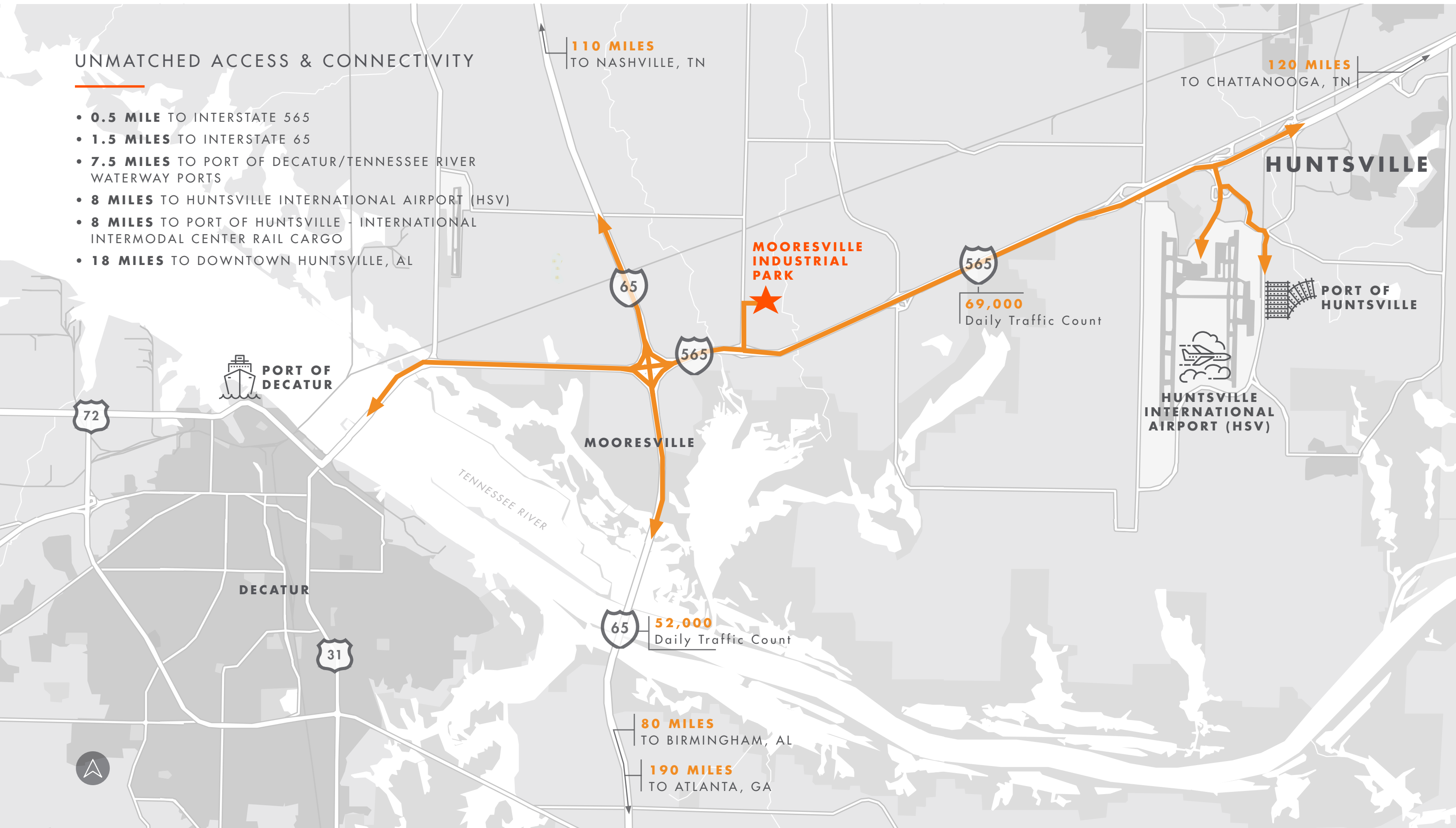
The Huntsville Metro lies in the heart of North Alabama, between the foothills of the Appalachian Mountains and the banks of the Tennessee River. The Huntsville area is also well positioned for industrial transportation by road, rail, and air, and is less than three hours by car to Atlanta, Nashville, Memphis, Chattanooga and Birmingham.

- 80 MILES TO BIRMINGHAM, AL
- 110 MILES TO NASHVILLE, TN
- 120 MILES TO CHATTANOOGA, TN
- 190 MILES TO ATLANTA, GA
- 75% OF U.S. MARKET WITHIN 1 DAY TRUCKING DISTANCE



### UNMATCHED ACCESS & CONNECTIVITY

- **0.5 MILE** TO INTERSTATE 565
- **1.5 MILES** TO INTERSTATE 65
- **7.5 MILES** TO PORT OF DECATUR/TENNESSEE RIVER WATERWAY PORTS
- **8 MILES** TO HUNTSVILLE INTERNATIONAL AIRPORT (HSV)
- **8 MILES** TO PORT OF HUNTSVILLE - INTERNATIONAL INTERMODAL CENTER RAIL CARGO
- **18 MILES** TO DOWNTOWN HUNTSVILLE, AL

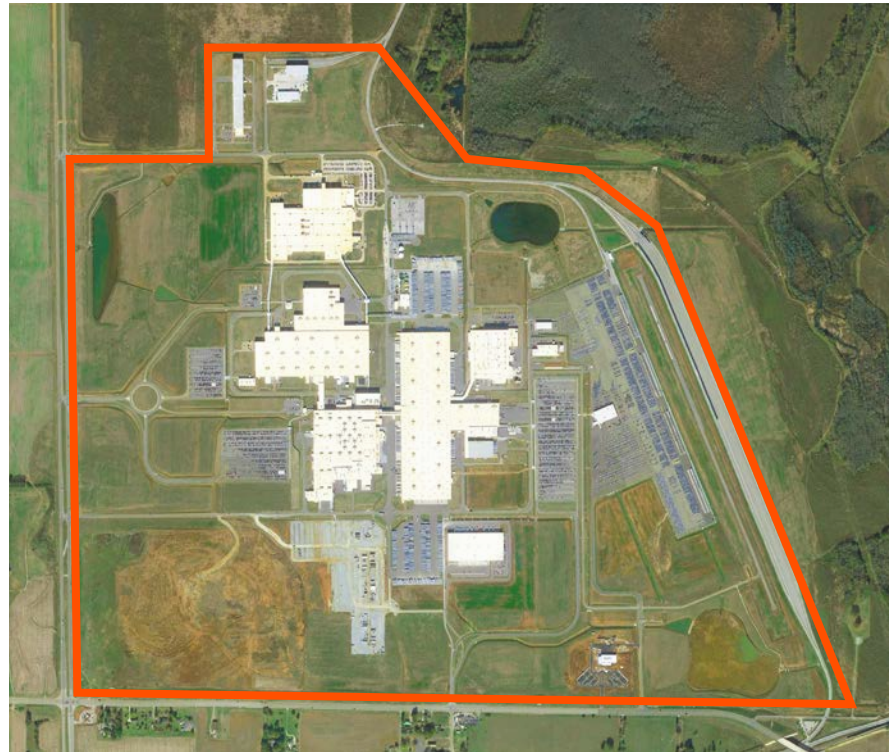


# CORPORATE PRESENCE IN HUNTSVILLE, AL MSA



Source: Huntsville Madison County Chamber (Economic Update Huntsville, Alabama January, 2023)

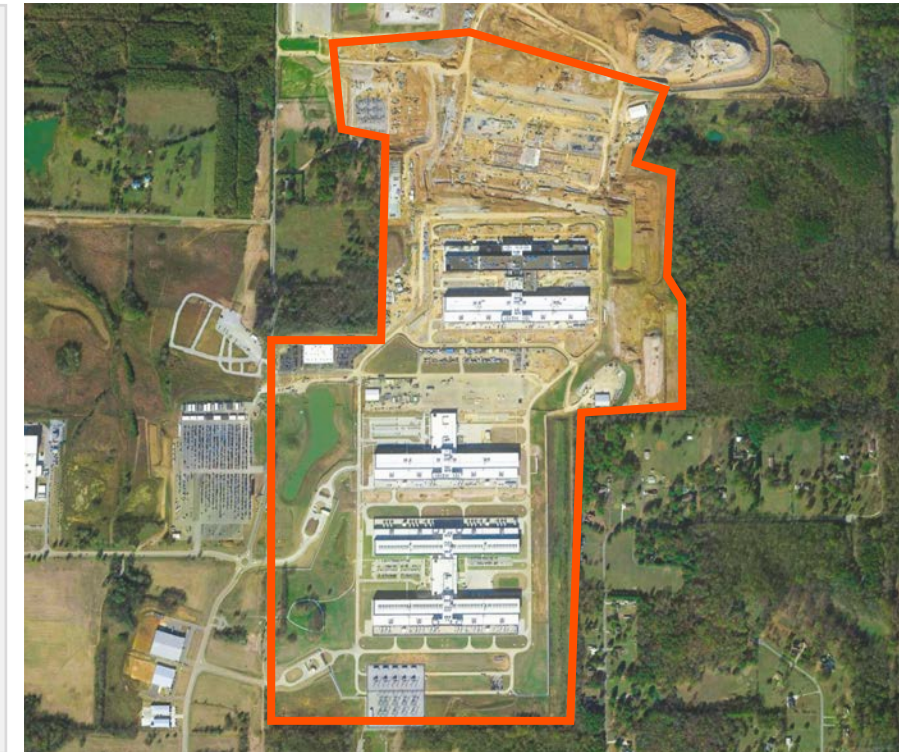
SURROUNDING SIGNIFICANT ECONOMIC DEVELOPMENTS



**MTM**  
**MAZDA TOYOTA  
 MANUFACTURING**

**MAZDA TOYOTA  
 MANUFACTURING**

- 3.7M SF
- \$2.3B investment
- Less than 5 miles from subject property
- 3,000 AC
- Producing 300,000 vehicles per year
- Over 6,000 new jobs



**Meta**

**META  
 (FORMERLY FACEBOOK)**

- 3.5M SF
- \$1.5B investment
- Less than 25 miles from subject property
- 200 AC
- 200 new jobs



**amazon fulfillment**

**AMAZON  
 FULFILLMENT CENTER**

- 2M SF
- Less than 5 miles from subject property
- 1,000 new jobs



**FEDERAL BUREAU  
 OF INVESTIGATION**

- \$2.4B investment
- Less than 15 miles from subject property
- 1,143 AC campus size
- 3,800 new jobs

## NEWLY ANNOUNCED NEARBY \$2.2B DEVELOPMENT



### ROCHFORD REALTY & CONSTRUCTION CO. INC. & LAND INNOVATIONS LLC

- 411 AC
- \$2.2B investment
- 1.5 miles from subject property
- Proposed 3,500 residential units and 200,000 SF of commercial space

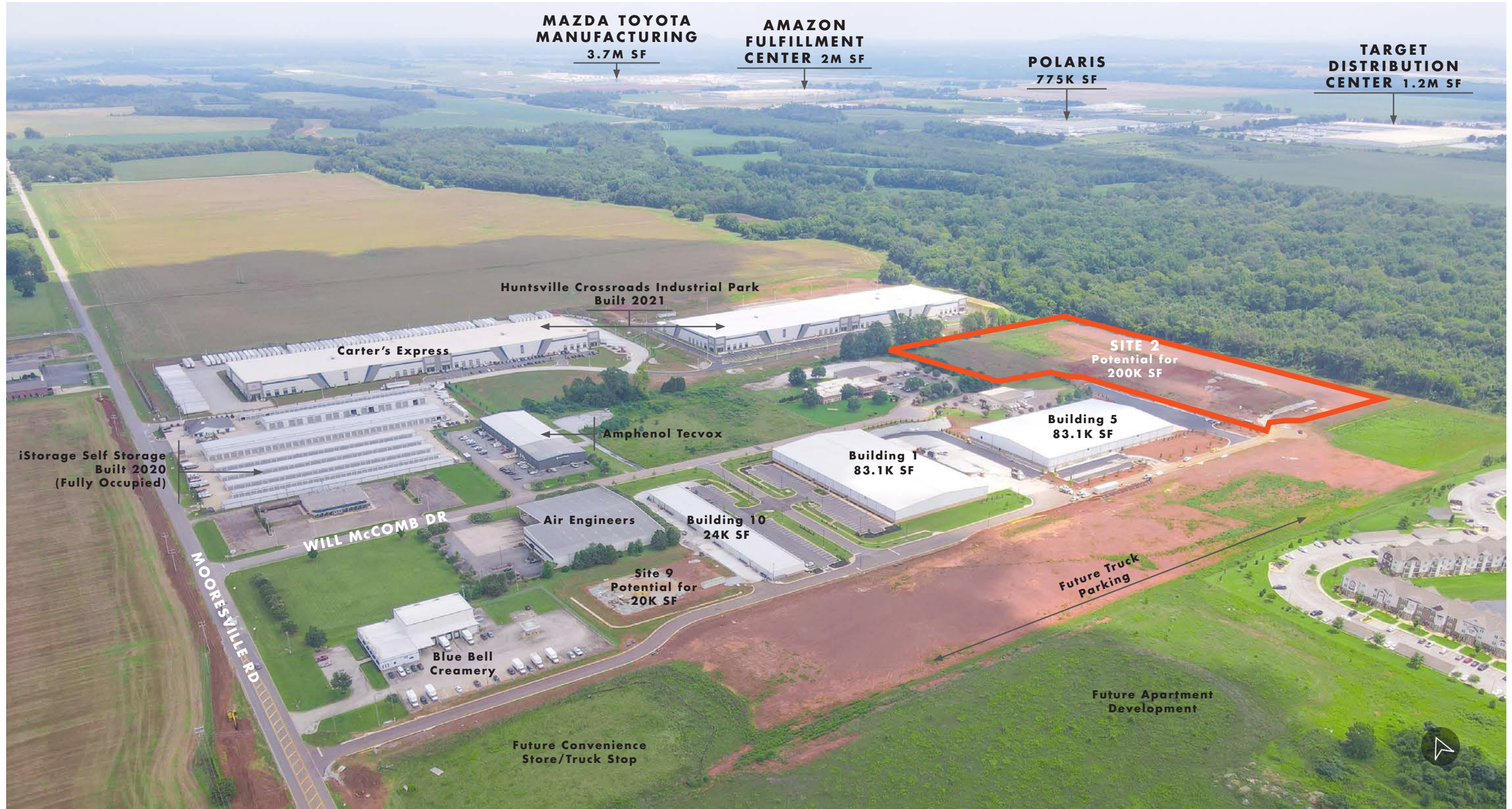


LAND INNOVATIONS

Nashville's Rochford Realty & Construction Co. Inc. and Land Innovations LLC from Brentwood announced plans for a large mixed-use project in North Alabama, valued at \$2.2 billion and spanning over 411 acres in Moorsville, situated between Huntsville and Decatur at the crossroads of Interstate 65 and Interstate 565. The project, estimated to take at least 20 years, will feature 3,500 residential units, 200,000 square feet of commercial space, and embrace new urbanist design principles emphasizing walkability and mixed-use areas.



# MOORESVILLE INDUSTRIAL PARK



## MOORESVILLE INDUSTRIAL PARK

MARKET  
ANALYSIS

## HUNTSVILLE, AL MSA

**# 1** BEST PLACE TO LIVE IN THE U.S. IN 2022 - 2023  
*Source: U.S. News & World Report*

**TOP 20** METROS FOR BUSINESS  
*Source: Forbes*

**# 1 OF 25** EMERGING TECH MARKETS FOR  
GROWTH POTENTIAL  
*Source: CoStar*

Huntsville and its surrounding areas have experienced remarkable economic growth driven by the aerospace and defense industry, technology and innovation sectors, manufacturing, healthcare, and education. The region's favorable business climate, skilled workforce, robust infrastructure, and focus on research and development contribute to its attractiveness for companies and industries seeking growth opportunities. Huntsville's future prospects remain promising as it continues to build on its strengths and diversify its economic base.

## TOP REGIONAL EMPLOYERS

- Redstone Arsenal: 50,000 employees
- NASA's Marshall Space Flight Center: 8,000 employees
- Huntsville Hospital: 4,000 employees
- Boeing: 3,000 employees
- Toyota Manufacturer: 1,500 employees

*Source: Huntsville Madison County Chamber*

**"Long term, the concentrations of manufacturing and aerospace-related industries, a highly educated labor force, and above-average population growth will enable Huntsville's metro area to outperform Alabama and the U.S."**

*– Moody's Analytics*

## ACCESS TO SKILLED LABOR POOL

The area draws its skilled labor force from several area community colleges, technical colleges, and universities. Additionally, high school students have access to technical training programs within the county and surrounding school systems.



- Alabama Robotics Technology Park
  - Designed to close the skills gap within the robotics industry, while also ensuring that students obtain training on the latest robotic technology in the industry
  - 10 minutes from subject property



- Calhoun Community College Huntsville
  - Largest two-year community college in Alabama serving over 8,000 students
  - 20 minutes from subject property



- University of Alabama in Huntsville
  - One of the nation's premier research universities with the second-largest research park in the U.S.
  - Maintains strong partnerships with federal agencies and commercial organizations including NASA's Marshall Space Flight Center, the Missile Defense Agency, the DIA Missile and Space Intelligence Center, and the U.S. Army Materiel Command
  - 15 minutes from subject property

## LIMESTONE COUNTY A WORK-READY COMMUNITY

Limestone County has been certified as a Work Ready Community, which county administrators see as a label that will foster interest in the county among companies considering locating there.

Source: Huntsville Madison County Chamber



# HUNTSVILLE, AL MSA INDUSTRIAL MARKET

- The Huntsville and Decatur industrial markets thrive as an affordable and growing alternatives to surrounding areas such as Birmingham, Atlanta, and Nashville.
- The recent addition of the Toyota-Mazda manufacturing facility has already brought more automotive suppliers and logistics firms to the area, driving industrial demand and rent growth.
- Industrial property owners have continued to push rents in the Huntsville market, as trailing 12-month rent growth exceeded 9.0% which is above the metro's five-year average of 7.6%.

## HUNTSVILLE KEY INDICATORS

TOTAL INVENTORY

**48.2M SF**

AVG MARKET RENT

**\$8.77 PSF**

YOY RENT GROWTH

**9.90%**

## DECATUR KEY INDICATORS

TOTAL INVENTORY

**19.9M SF**

AVG MARKET RENT

**\$6.75 PSF**

YOY RENT GROWTH

**9.32%**

# CONTACT

## INVESTMENT ADVISORS

### RICK HELTON

RICK.HELTON@FOUNDRYCOMMERCIAL.COM

615.324.0785

### ANDREW MAXWELL

ANDREW.MAXWELL@FOUNDRYCOMMERCIAL.COM

615.324.0793

### ALLY LANAHAN

ALLY.LANAHAN@FOUNDRYCOMMERCIAL.COM

615.324.0782

## FINANCIAL ANALYSIS

### LUCAS McINTOSH

LUCAS.MCINTOSH@FOUNDRYCOMMERCIAL.COM

615.324.7260

## ACQUISITION FINANCING

### J.C. TACOT

JOHN.TACOT@FOUNDRYCOMMERCIAL.COM

813.204.2101

## HARDIMAN PROPERTIES, INC.

### JOEY HARDIMAN

JOEYHARDIMAN@GMAIL.COM

615.771.1031

**FOUNDRY**  
COMMERCIAL

INVESTMENT  
ADVISORY  
GROUP

Hardiman Properties, Inc.

The information on 25150 Will McComb Drive, Tanner, AL 35671 ("Property") provided by Foundry Commercial, LLC may be used only by parties approved by Foundry Commercial, LLC and the Owner. The Property is privately offered and, by accepting this Offering Memorandum, the party in possession hereof agrees (i) to return it to Foundry Commercial, LLC immediately upon request of Foundry Commercial, LLC or the Owner and; (ii) that this Offering Memorandum and its contents are of a confidential nature and will be held and treated in the strictest confidence. No portion of this Offering Memorandum may be copied or otherwise reproduced or disclosed to anyone without the prior written authorization of Foundry Commercial, LLC or the Owner.

The information contained in this Offering Memorandum is confidential, furnished solely for the purpose of a review by a prospective purchaser of the Property and is not to be used for any other purpose or made available to any other person without the expressed written consent of Foundry Commercial, LLC. This information is presented to you for your information only to determine if you are interested in pursuing this investment opportunity as a Principal. The material is based in part upon information supplied by the Owner and in part upon information obtained by Foundry Commercial, LLC from sources it deems reasonably reliable. Summaries of any documents are not intended to be comprehensive or all-inclusive, but rather only outlines of some of the provisions contained herein. No warranty or representation, expressed or implied, is made by the Owner, Foundry Commercial, LLC, or any of their respective affiliates as to the accuracy or completeness of the information contained herein or as to engineering or environmental matters. Prospective purchasers should make their own projections and conclusions without reliance upon the material contained herein and conduct their own independent due diligence, including engineering and environmental inspections, to determine the condition of the Property and the existence of any potentially hazardous materials on the property.

The Owner and Foundry Commercial, LLC expressly reserve the right, at their sole discretion, to reject any or all expressions of interest, or offers to purchase the Property and/or terminate discussions with any party at any time with or without notice. The Owner shall have no legal commitment or obligation to any purchaser reviewing this Offering Memorandum or making an offer to purchase the Property, unless a written agreement for the purchase of the Property has been fully executed, delivered, and approved by the Owner and any conditions to the Owner's obligations thereunder have been satisfied or waived. Foundry Commercial, LLC is not authorized to make any representations or agreements on behalf of the Owner.

The terms and conditions set forth apply to the Offering Memorandum in its entirety. Foundry Commercial, LLC is acting as the exclusive Agent for the Seller in this transaction.