

3435

STELZER ROAD

► Easton Office Building

CBRE

JOHN HALL
Senior Vice President
+1 614 430 5081
john.hall@cbre.com

DON MATSANOFF
First Vice President
+1 614 430 5000
don.matsanoff@cbre.com





BUILDING HIGHLIGHTS

3435 Stelzer Road is a 240,000 square foot office building in the coveted Easton submarket. A dramatic 3-story atrium illuminates an activated and newly renovated lobby. This well-appointed property is highlighted by its ample parking and close proximity to the diverse amenities found at the award-winning Easton Town Center.



**BOMA INTERNATIONAL 2022
THE OUTSTANDING BUILDING
OF THE YEAR AWARD WINNER**



**UP TO 15,549 RSF AVAILABLE
DIVISIBLE TO 8,000 SF**



LEASE RATE: \$14.25/SF NET



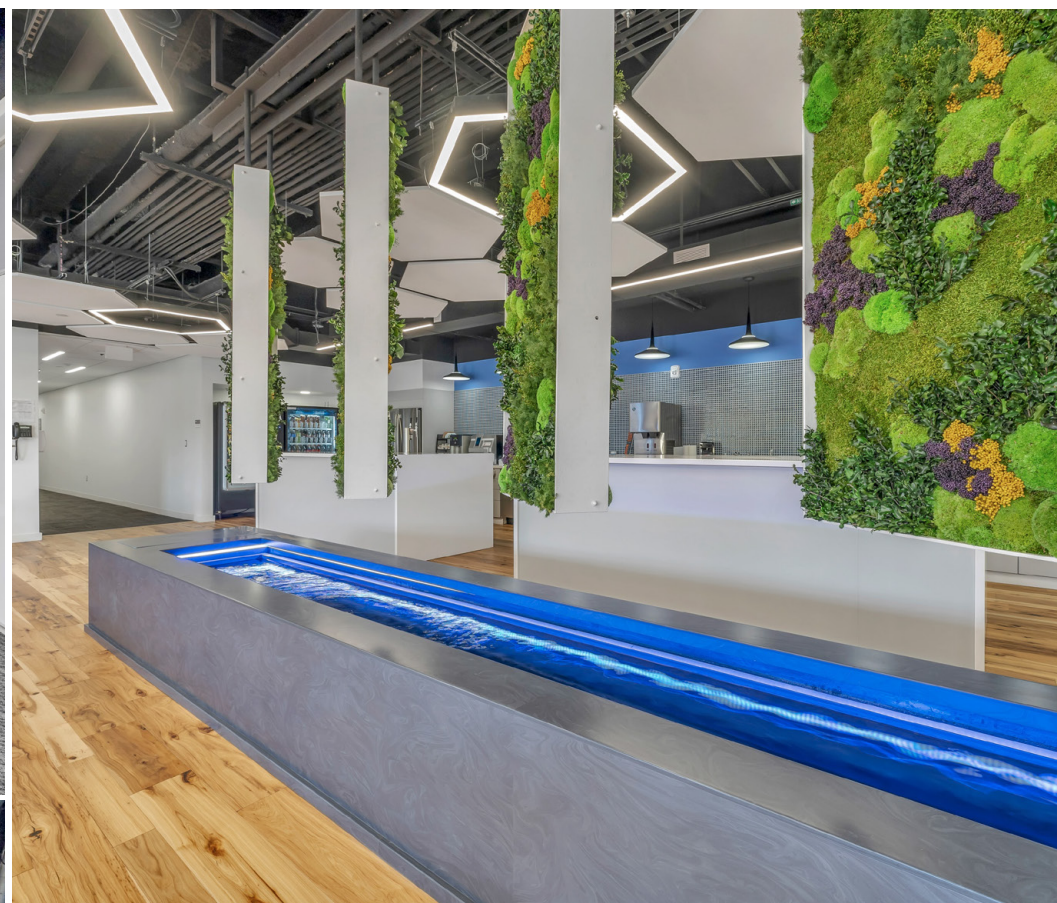
**1,242 PARKING SPACES
5.2 PER 1,000 SF**

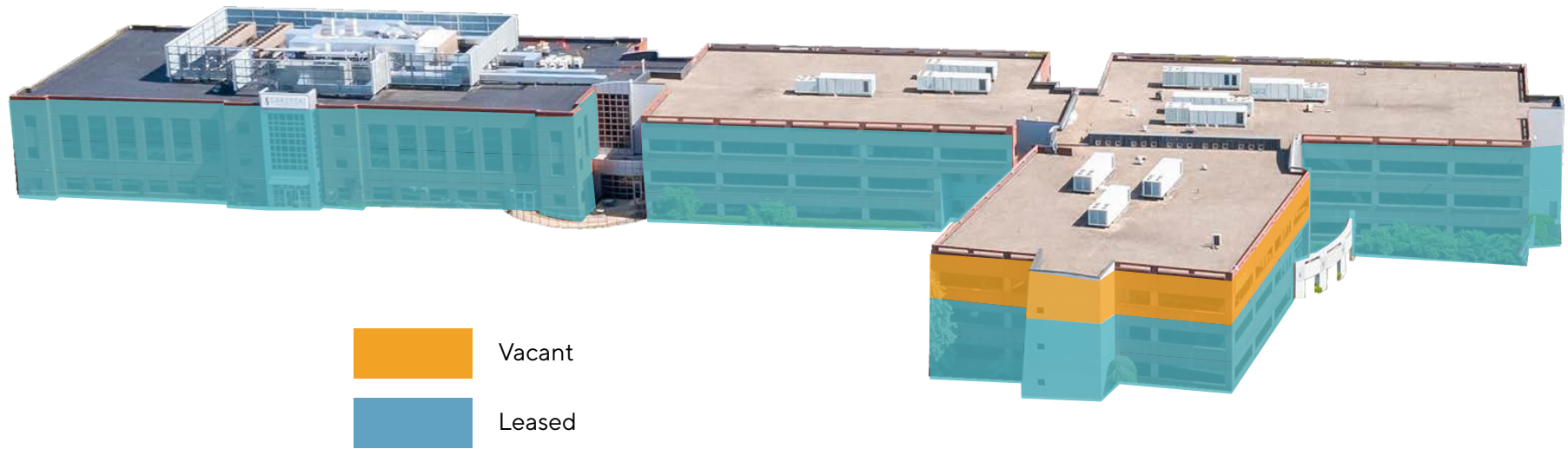


**LARGE EFFICIENT
FLOOR PLATES**



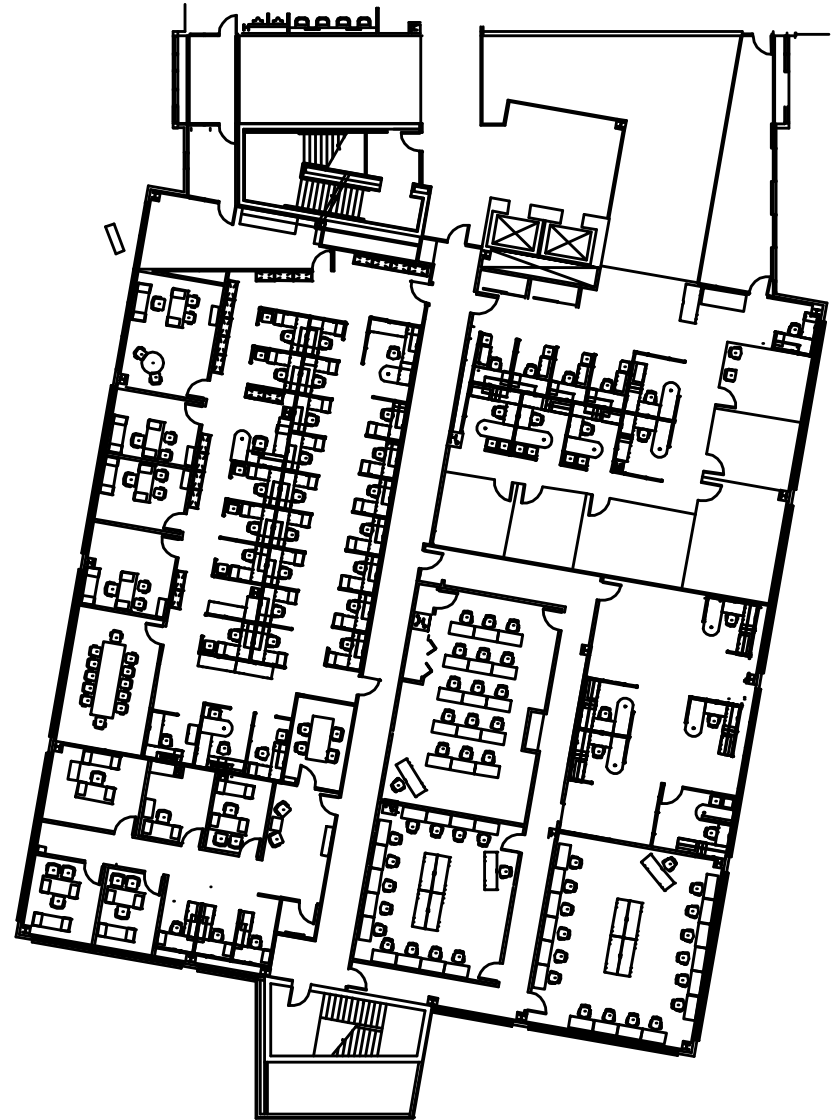
**BACK-UP GENERATORS &
POWER GRIDS**







SUITE 3S 15,549 RSF







EASY ACCESS TO
AND FROM I-270



ABUNDANT, FREE
PARKING



WALKABLE
ENVIRONMENT
OF A CBD



WORLD-CLASS
SHOPPING &
DINING



LARGEST LIVE-
WORK-PLAY
DEVELOPMENT IN
COLUMBUS



ATTRACT &
RETAIN QUALITY
EMPLOYEES



EMPLOYERS &
EMPLOYEES WANT
TO BE AT EASTON



CBRE

CONTACT US

JOHN HALL

Senior Vice President
+1 614 430 5081
john.hall@cbre.com

DON MATSANOFF

First Vice President
+1 614 430 5000
don.matsanoff@cbre.com

© 2024 CBRE, Inc. All rights reserved. This information has been obtained from sources believed reliable, but has not been verified for accuracy or completeness. Any projections, opinions, or estimates are subject to uncertainty. The information may not represent the current or future performance of the property. You and your advisors should conduct a careful, independent investigation of the property and verify all information. Any reliance on this information is solely at your own risk. CBRE and the CBRE logo are service marks of CBRE, Inc. and/or its affiliated or related companies in the United States and other countries. All other marks displayed on this document are the property of their respective owners. Photos herein are the property of their respective owners and use of these images without the express written consent of the owner is prohibited. PMStudio_December2024