



1,775 SF & 6,062 SF INLINE (DIVISIBLE) AVAILABLE

8810 GROSS POINT RD, SKOKIE
FOR LEASE



CONTACT: JONATHAN HYMAN jhyman@metrocre.com 224.365.8144 // **HANNAH PERL** hperl@metrocre.com 847.849.1026

PROPERTY HIGHLIGHTS

- Right off the I-94 Full Interchange (150,000 VPD)
- Multiple Access Points along Dempster and Gross Point Rd.
- Prominent visibility from Dempster & Gross Point Rd (56K VPD combined)
- Large Pylon Signage with Strong Visibility from Dempster
- Highly Dense Trade Market

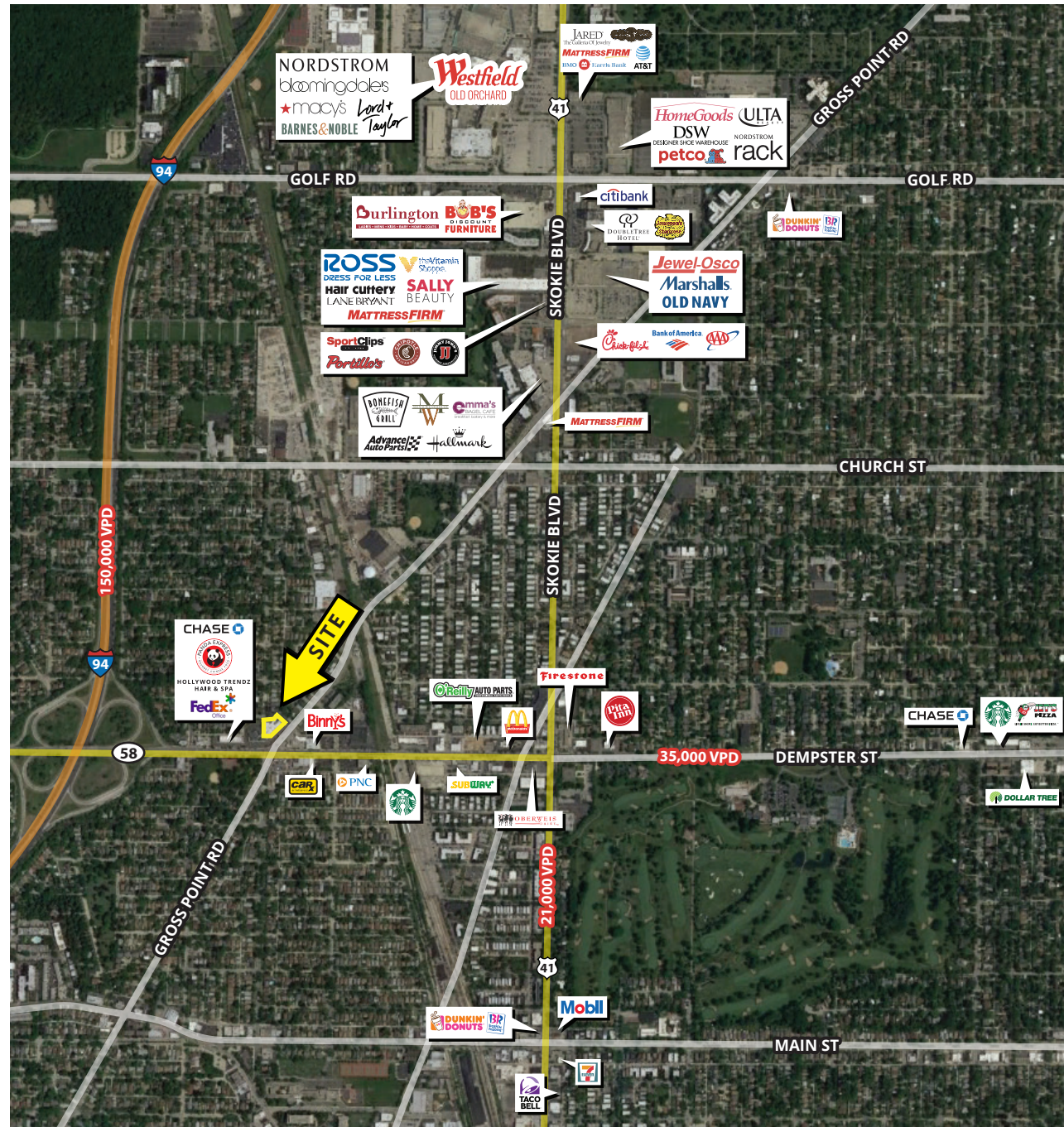
DEMOGRAPHICS

	1 MILE	3 MILES	5 MILES
TOTAL POPULATION	27,590	147,792	505,185
DAYTIME POPULATION	17,846	127,135	369,094
HOUSEHOLDS	10,446	53,411	192,646
AVG HH INCOME	\$93,960	\$137,173	\$138,551

TRAFFIC COUNTS

DEMPSTER ST	35,000 VPD
SKOKIE BLVD	21,000 VPD

AREA RETAILERS INCLUDE



CONTACT INFORMATION:

JONATHAN HYMAN
 jhyman@metrocre.com
 224.365.8144

HANNAH PERL
 hperl@metrocre.com
 847.849.1026

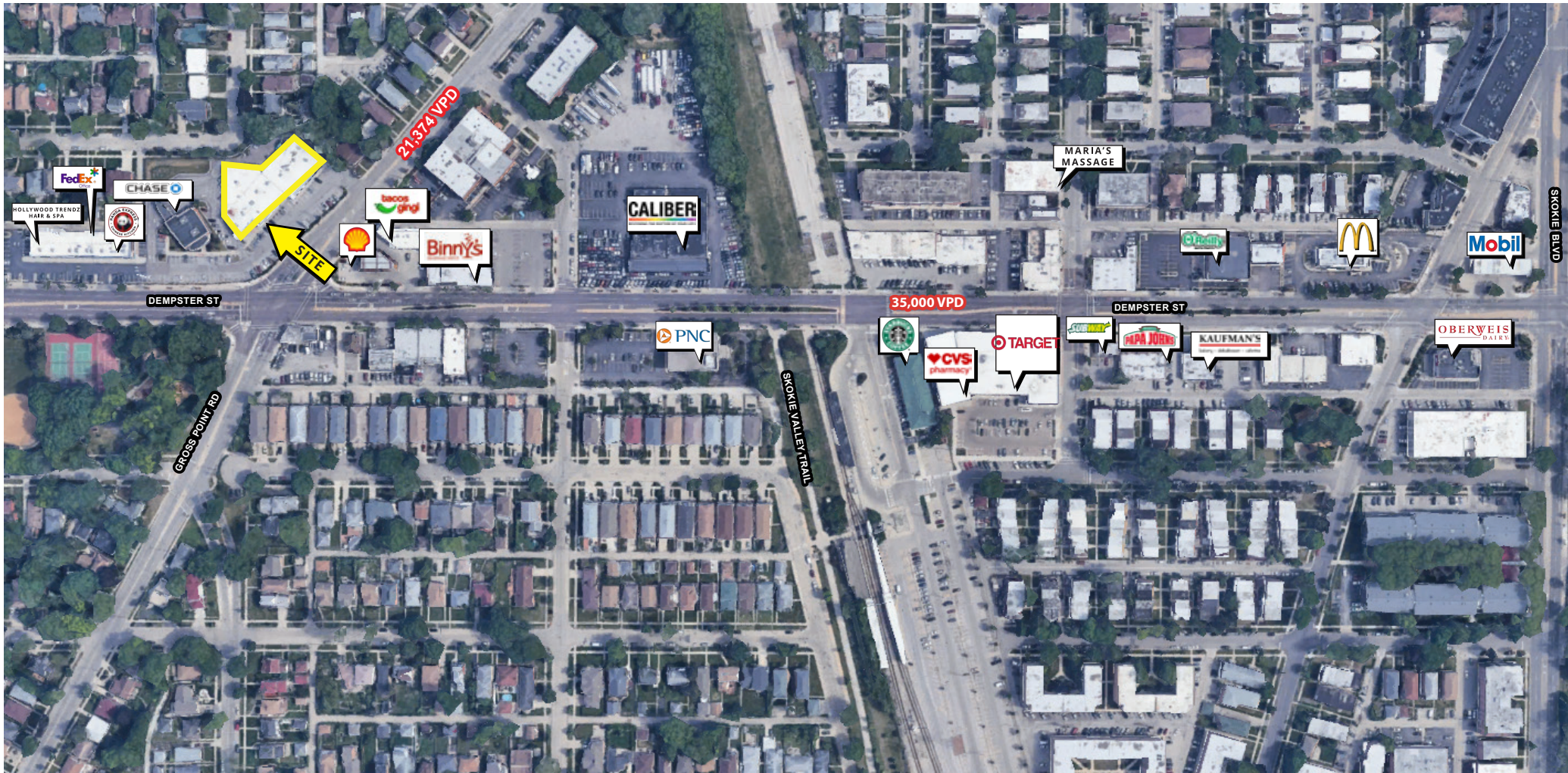
56 Skokie Valley Road
 Highland Park, Illinois 60035
 www.MetroCRE.com



1,775 SF & 6,062 SF INLINE (DIVISIBLE) AVAILABLE

8810 GROSS POINT RD, SKOKIE

FOR LEASE



CONTACT
INFORMATION:

JONATHAN HYMAN
jhyman@metrocre.com
224.365.8144

HANNAH PERL
hperl@metrocre.com
847.849.1026

56 Skokie Valley Road
Highland Park, Illinois 60035
www.MetroCRE.com

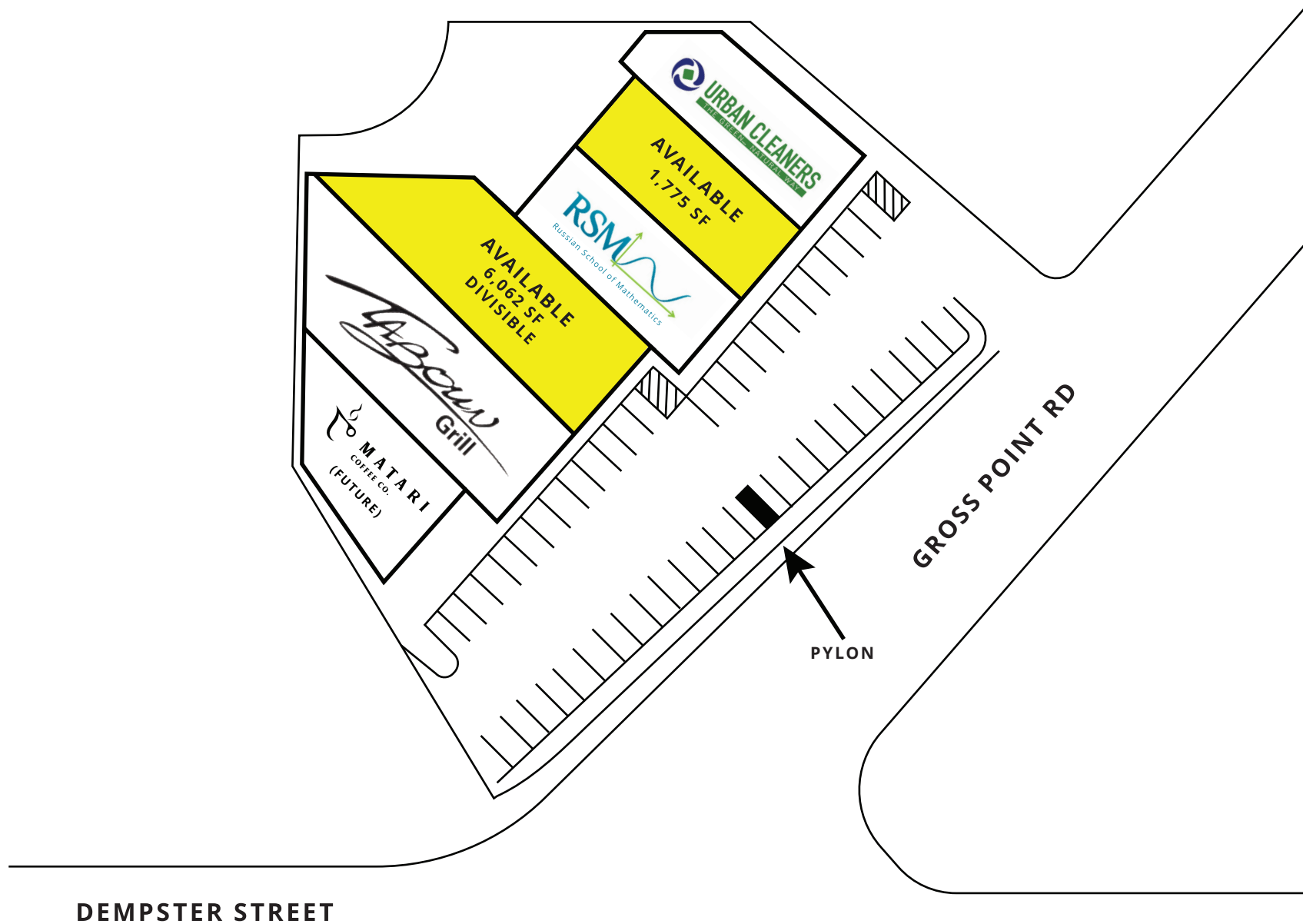


METRO
COMMERCIAL REAL ESTATE

1,775 SF & 6,062 SF INLINE (DIVISIBLE) AVAILABLE

8810 GROSS POINT RD, SKOKIE

FOR LEASE



DEMPSTER STREET

GROSS POINT RD

PYLON

CONTACT
INFORMATION:

JONATHAN HYMAN
jhyman@metrocre.com
224.365.8144

HANNAH PERL
hperl@metrocre.com
847.849.1026

56 Skokie Valley Road
Highland Park, Illinois 60035
www.MetroCRE.com



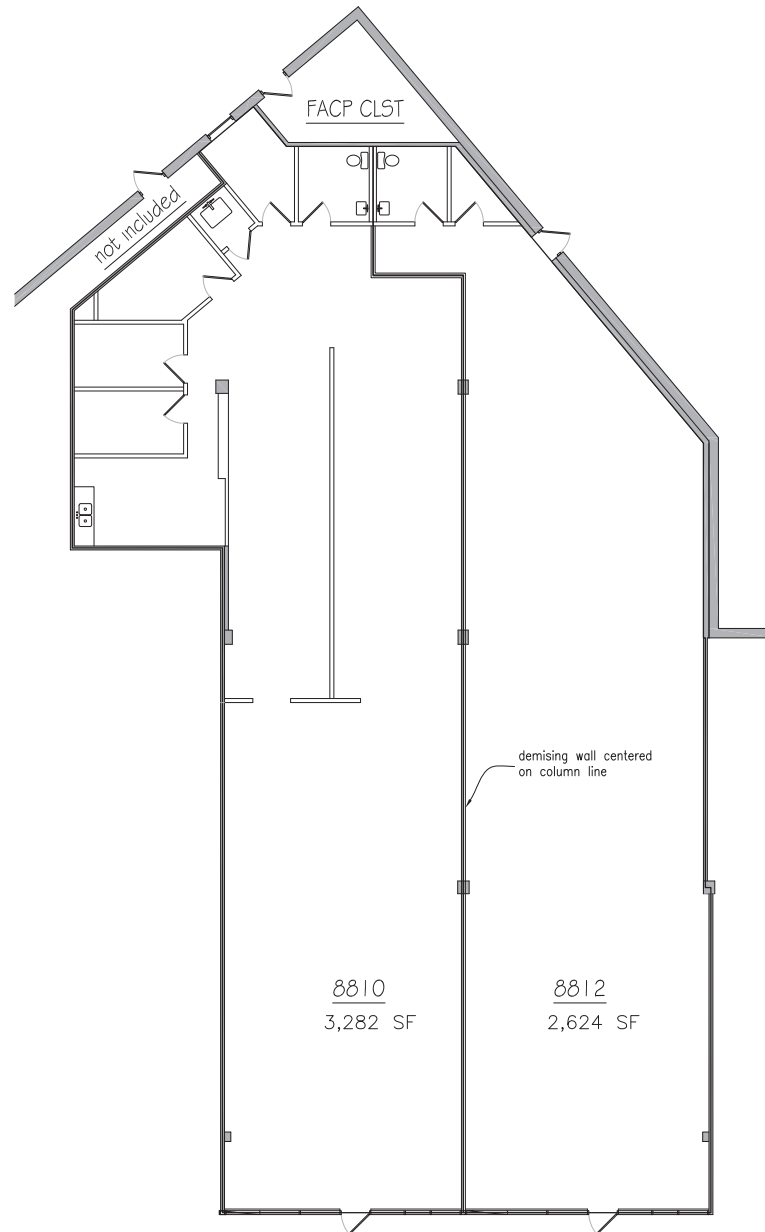
METRO
COMMERCIAL REAL ESTATE

1,775 SF & 6,062 SF INLINE (DIVISIBLE) AVAILABLE

8810 GROSS POINT RD, SKOKIE

FOR LEASE

**6,062 SF
SPACE DIVISIBLE**



**CONTACT
INFORMATION:**

JONATHAN HYMAN
jhyman@metrocre.com
224.365.8144

HANNAH PERL
hperl@metrocre.com
847.849.1026

56 Skokie Valley Road
Highland Park, Illinois 60035
www.MetroCRE.com



METRO
COMMERCIAL REAL ESTATE