



Lauren Office Building

901 S 1st Street Abilene, TX

Property Features

The Lauren Office Building is a historic, multi-story office property located in Abilene's growing and highly sought-after SODA District. Offering a total of 45,252 SF across four floors, the building provides flexibility for a single tenant to occupy the entire property or for multiple users across different floors. Elevator access is available, ensuring convenient access throughout.

Recent updates include new chillers, fully redone electrical and plumbing systems, and renovated restrooms. Tenant improvement allowance is available, providing an excellent opportunity for users to customize the space to fit their needs in one of Abilene's most active and revitalized areas.

Offering Summary

SPACE AVAILABLE	up to 45,252 SF
DIVISIBLE?	Yes
LEASE RATE	\$18/SF
LEASE TYPE	NNN

NO WARRANTY OR REPRESENTATION, EXPRESS OR IMPLIED, IS MADE AS TO THE ACCURACY OF THE INFORMATION CONTAINED HEREIN, AND THE SAME IS SUBMITTED SUBJECT TO ERRORS, OMISSIONS, CHANGE OF PRICE, RENTAL OR OTHER CONDITIONS, PRIOR SALE, LEASE OR FINANCING, OR WITHDRAWAL WITHOUT NOTICE, AND OF ANY SPECIAL LISTING CONDITIONS IMPOSED BY OUR PRINCIPALS NO WARRANTIES OR REPRESENTATIONS ARE MADE AS TO THE CONDITION OF THE PROPERTY OR ANY HAZARDS CONTAINED THEREIN ARE ANY TO BE IMPLIED.

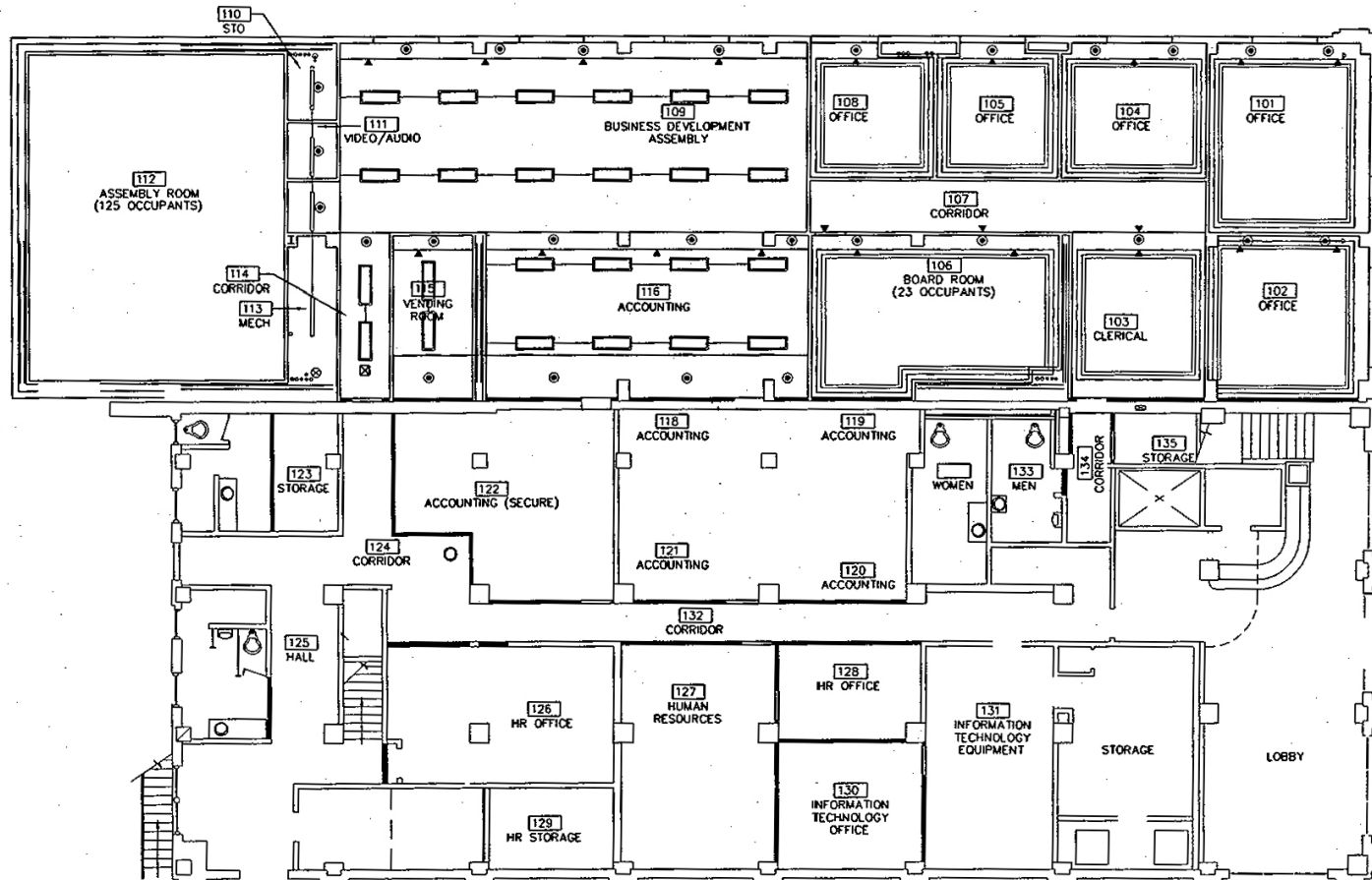
Shannon Powell
 shannon@naiwheelhouse.com
 +1 281 788 1758
 naiwheelhouse.com

FOR LEASE



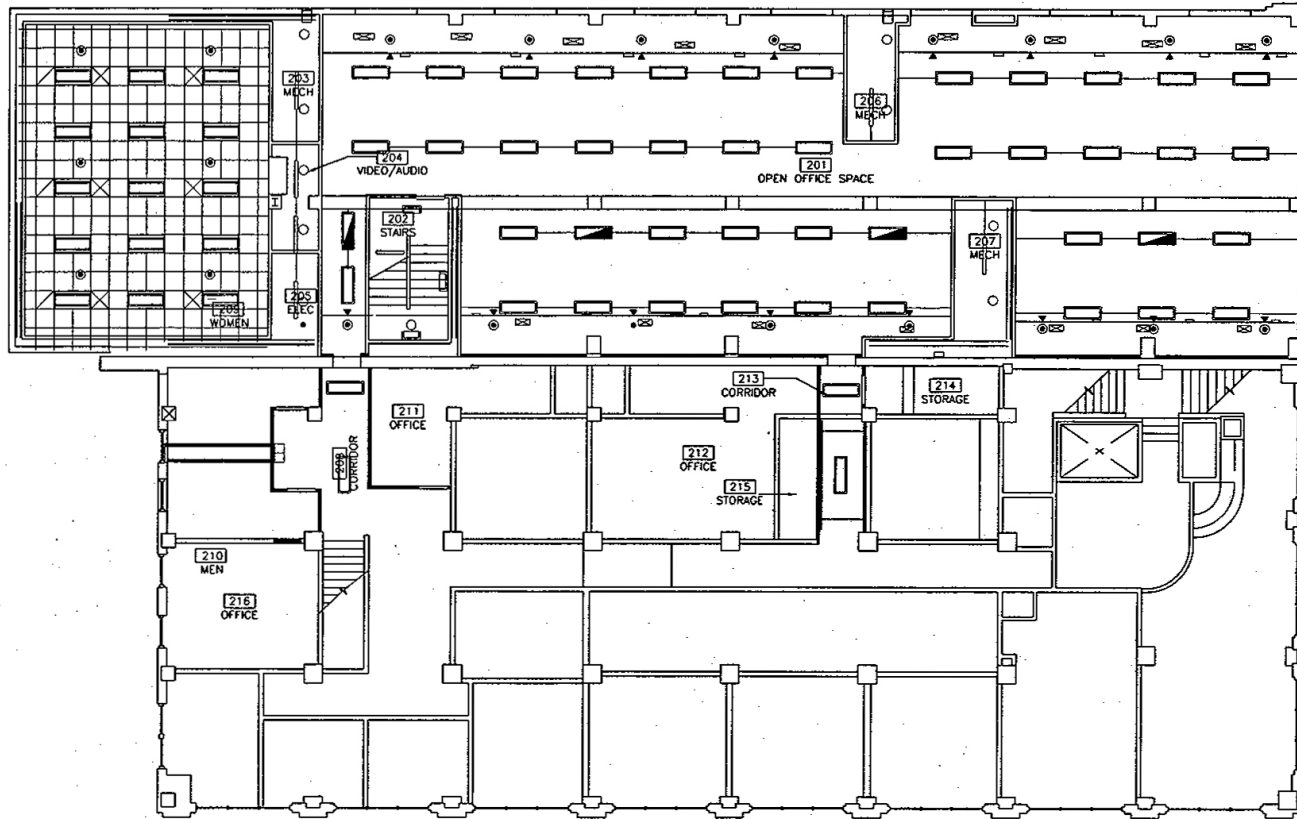
FOR LEASE

First Floor



FOR LEASE

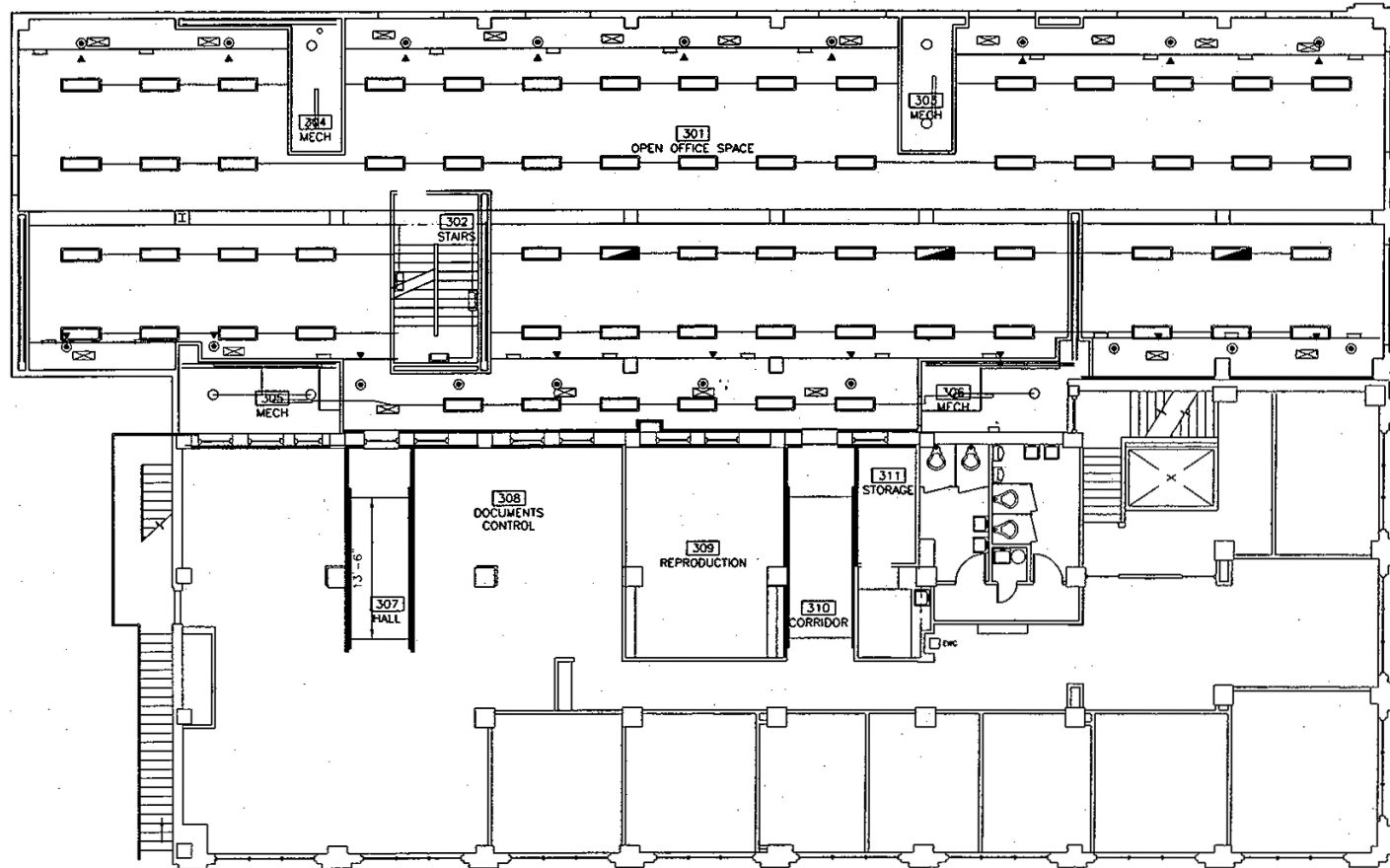
Second Floor



2 SECOND FLOOR - CEILING PLAN
SCALE: 1/8" = 1'-0"

FOR LEASE

Third Floor



2 THIRD FLOOR - CEILING PLAN
A14.2 SCALE: 1/8" = 1'-0"

FOR LEASE

Fourth Floor

