

107 SULLIVAN STREET

Soho • New York City • Between Prince and Spring Streets



For more information:

Joshua J. Roth

Senior Vice President of Retail

212.408.0602

jroth@mskyline.com



**Manhattan
Skyline**

103 W. 55th Street // New York, NY 10019 // 212.408.0602

All information contained herein is from sources deemed reliable; however, no representation is made as to the accuracy thereof. All data is subject to change of price, errors, omissions, other conditions or withdrawal without notice. Any square foot dimensions set forth are approximate.

107 SULLIVAN STREET

SoHo • New York City • Between Prince and Spring Streets



OFFERING SUMMARY

Available SF: +/- 584 sf - Ground Floor
+/- 362 sf - Basement

Frontage: 10' on Sullivan Street

Asking Rent: Upon Request

Term: Long Term

Possession: Immediate

PROPERTY HIGHLIGHTS

- Formerly Ryan Ramelow Hats
- Pristine boutique space in move-in condition
- All non-vented uses considered
- Neighboring tenants include: Global Table, The Dutch, Blue Ribbon Sushi, Alidoro, Anonymous, Sugarfish, Altesi Downtown Ristorante, Sorate Tea House, Blue Ribbon Brasserie, Sweet Rehab Parisian Bakery

For more information:

Joshua J. Roth

Senior Vice President of Retail

212.408.0602

jroth@mskyline.com



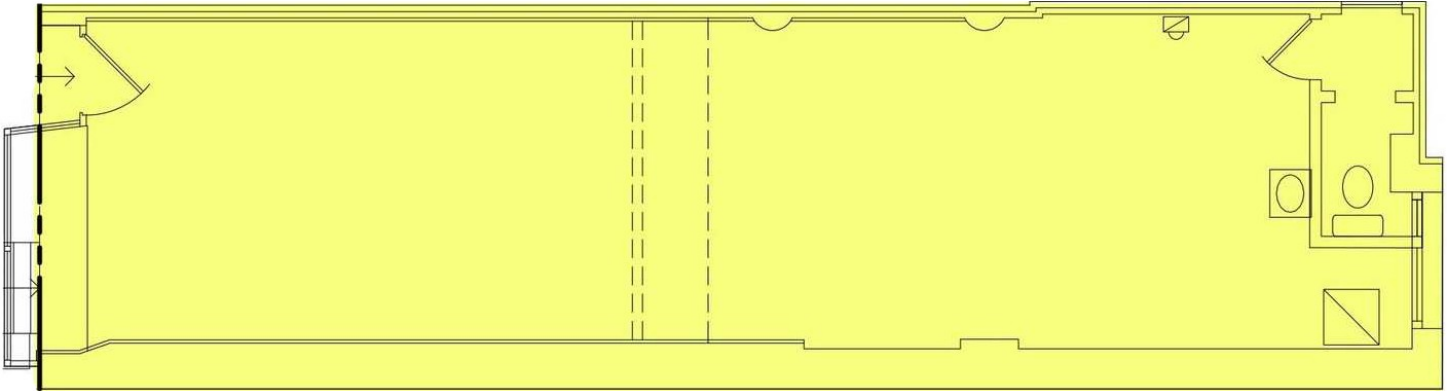
103 W. 55th Street // New York, NY 10019 // 212.408.0602

All information contained herein is from sources deemed reliable; however, no representation is made as to the accuracy thereof. All data is subject to change of price, errors, omissions, other conditions or withdrawal without notice. Any square foot dimensions set forth are approximate.

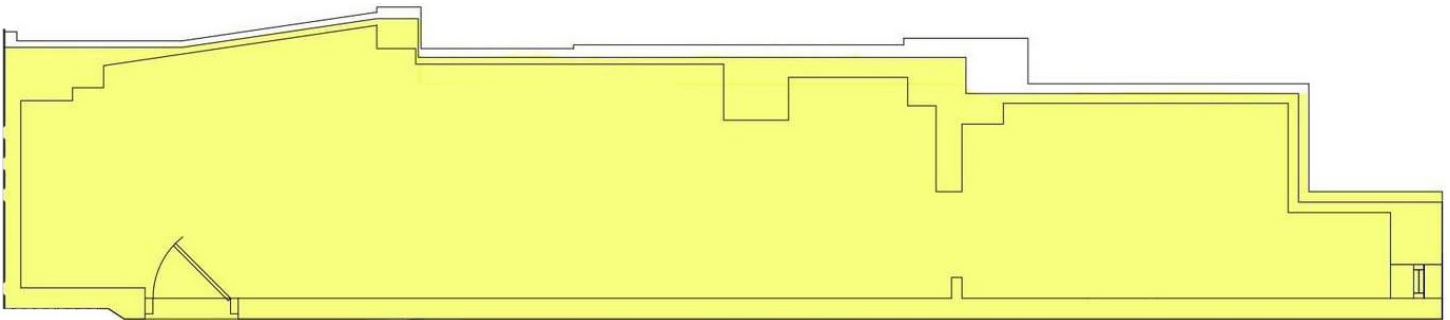
107 SULLIVAN STREET

SoHo • New York City • Between Prince and Spring Streets

Sullivan Street



Ground Floor



Basement

Floorplan is for illustrative purposes only, has not been verified, is not to scale and is subject to change.

For more information:

Joshua J. Roth

Senior Vice President of Retail

212.408.0602

jroth@mskyline.com

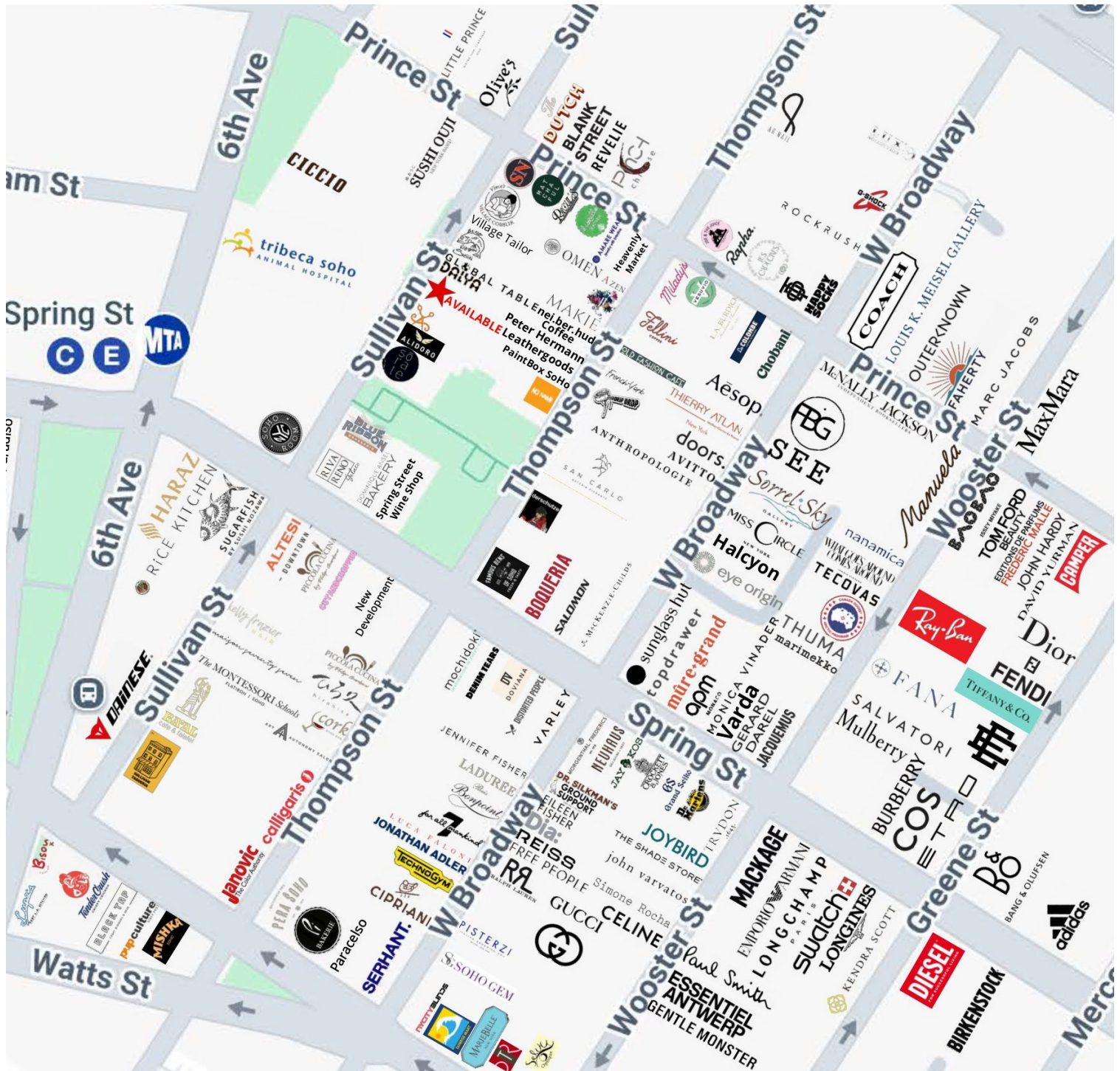


103 W. 55th Street // New York, NY 10019 // 212.408.0602

All information contained herein is from sources deemed reliable; however, no representation is made as to the accuracy thereof. All data is subject to change of price, errors, omissions, other conditions or withdrawal without notice. Any square foot dimensions set forth are approximate.

107 SULLIVAN STREET

SoHo • New York City • Between Prince and Spring Streets



For more information:

Joshua J. Roth

Senior Vice President of Retail

212.408.0602

jroth@mskyline.com

103 W. 55th Street // New York, NY 10019 // 212.408.0602

All information contained herein is from sources deemed reliable; however, no representation is made as to the accuracy thereof. All data is subject to change of price, errors, omissions, other conditions or withdrawal without notice. Any square foot dimensions set forth are approximate.



107 SULLIVAN STREET

SoHo • New York City • Between Prince and Spring Streets



POPULATION

	0.25 MILES	0.5 MILES	1 MILE
Total Population	8,755	40,739	175,364
Average age	34.4	33.8	35.9
Average age (Male)	35.1	34.9	36.7
Average age (Female)	33.9	33.1	35.2

HOUSEHOLDS & INCOME

	0.25 MILES	0.5 MILES	1 MILE
Total households	4,656	20,916	87,139
# of persons per HH	1.9	1.9	2.0
Average HH income	\$155,282	\$156,633	\$149,384
Average house value	\$981,924	\$961,440	\$963,973

* Demographic data derived from 2020 ACS - US Census

For more information:

Joshua J. Roth

Senior Vice President of Retail

212.408.0602

jroth@mskyline.com



103 W. 55th Street // New York, NY 10019 // 212.408.0602

All information contained herein is from sources deemed reliable; however, no representation is made as to the accuracy thereof. All data is subject to change of price, errors, omissions, other conditions or withdrawal without notice. Any square foot dimensions set forth are approximate.