



LEASE REDUCTION!

FOR LEASE

805 N Murray Blvd.
Colorado Springs, CO 80915

PROPERTY SPECIFICATIONS



LOCATION:

805 N Murray Blvd
Colorado Springs, CO 80915



AVAILABLE:

- **Area 103** ± 3,164 SF
- **Area 104** ± 2,855 SF
- **Area 201** ± 9,227 SF



LEASE RATE:

~~Starting at \$8 - \$12~~

- **REDUCED LEASE: Area 103** \$10 /SF + NNN
- **REDUCED LEASE: Area 104** \$10 /SF + NNN
- **REDUCED LEASE: Area 201** \$7/SF + NNN
NNN \$3.00



ZONING

PBC

USAGE

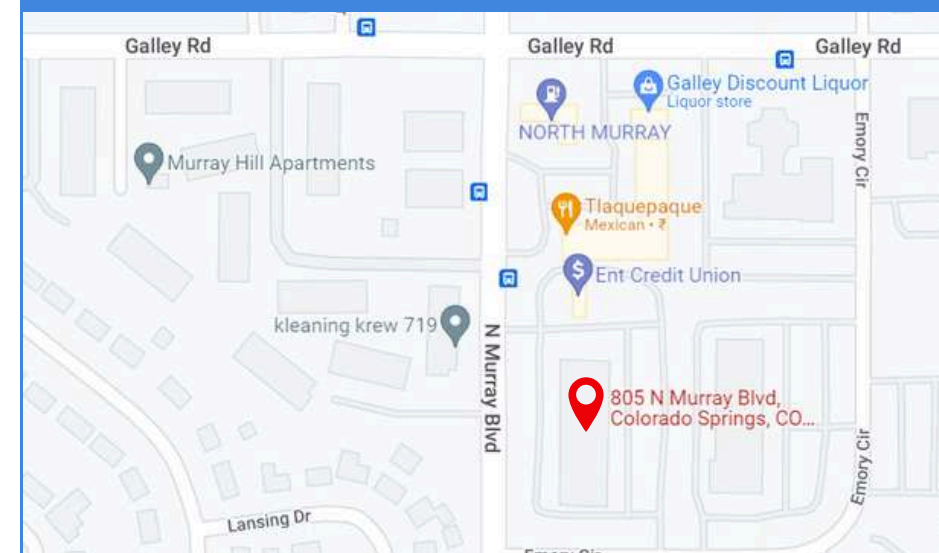
Office



ADDITIONAL INFORMATION:

- Backup Generator
- Elevator/ADA Access Available
- Private Entrance
- Secured Entrance
- Large Conference Room
- Private Executive Suites available

MAP



JASON CASTRO

President



jason@peakcp.net
719.227.9987



2727 N. Cascade Avenue,
Suite 127, Colorado Springs, CO 80907



719.227.9987



www.peakcp.net

Peak Commercial Properties believes information contained herein, while not guaranteed, is from sources they believe reliable. `Price, terms, and information are subject to change without notice.

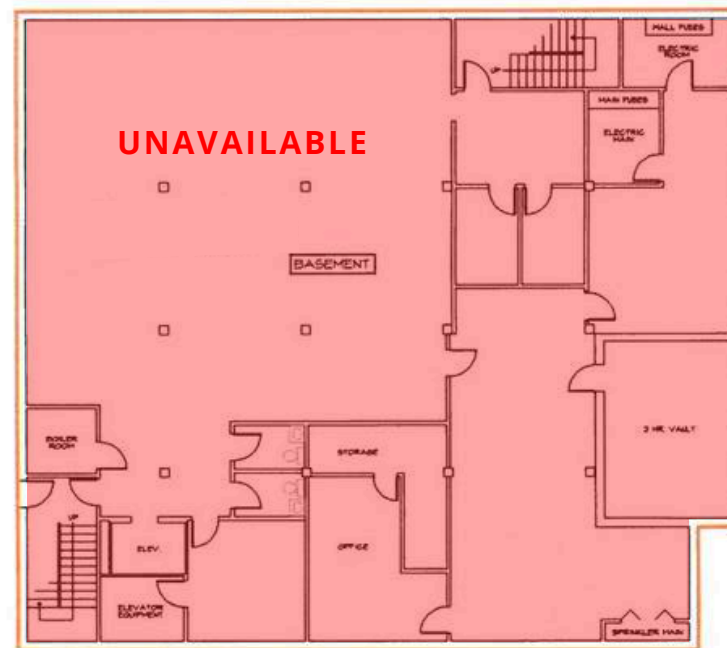
FOR LEASE

**805 N Murray Blvd.
Colorado Springs, CO 80915**

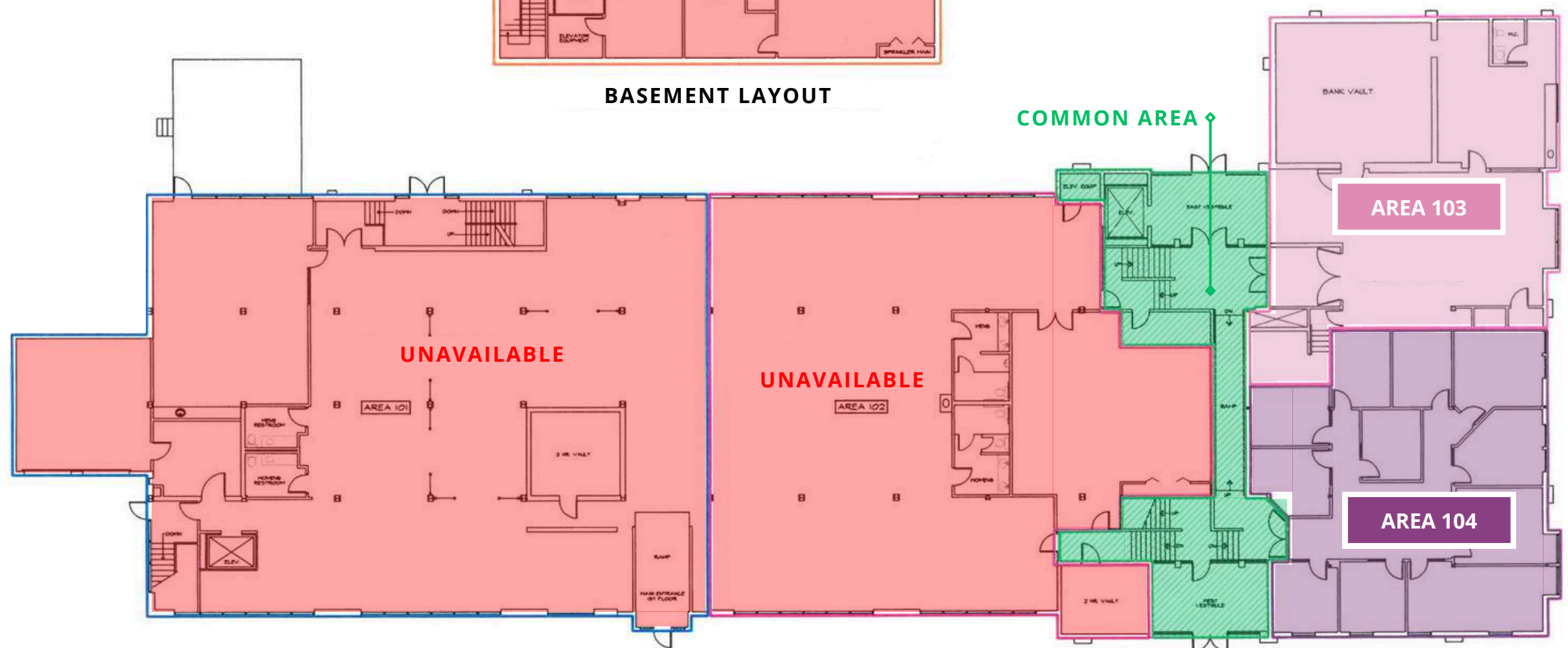
**805 N MURRAY
(1ST FLOOR PLAN)**

SPACES AVAILABLE:

- **Area 103** 3,164 SF
- **Area 104** 2,855 SF



BASEMENT LAYOUT



FIRST FLOOR LAYOUT



2727 N. Cascade Avenue,
Suite 127, Colorado Springs, CO 80907



719.227.9987



www.peakcp.net

Peak Commercial Properties believes information contained herein, while not guaranteed, is from sources they believe reliable. `Price, terms, and information are subject to change without notice.

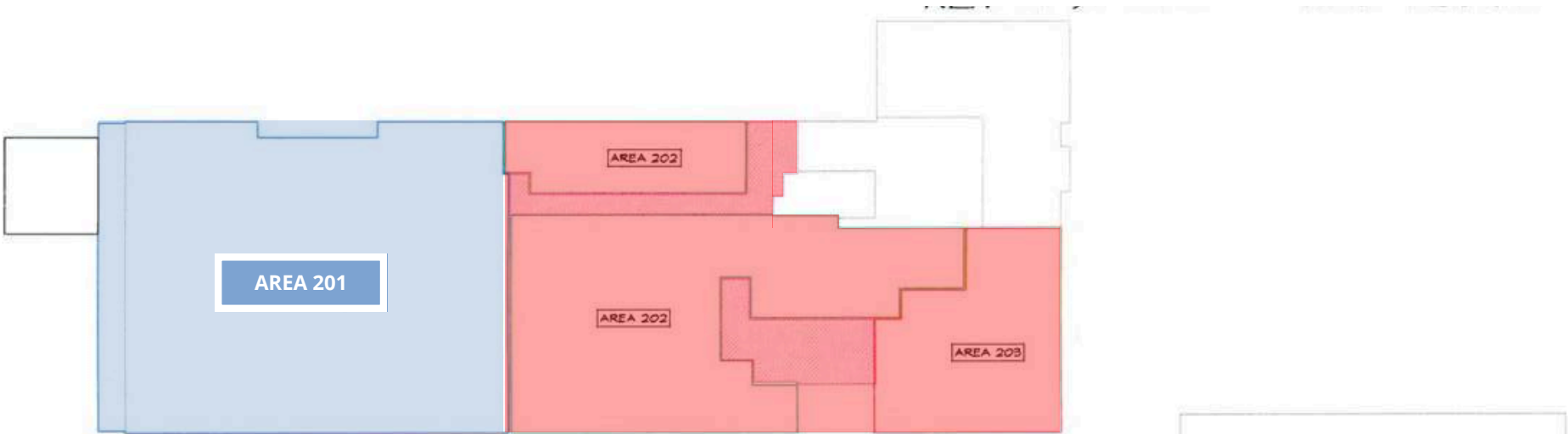
FOR LEASE

805 N Murray Blvd.
Colorado Springs, CO 80915

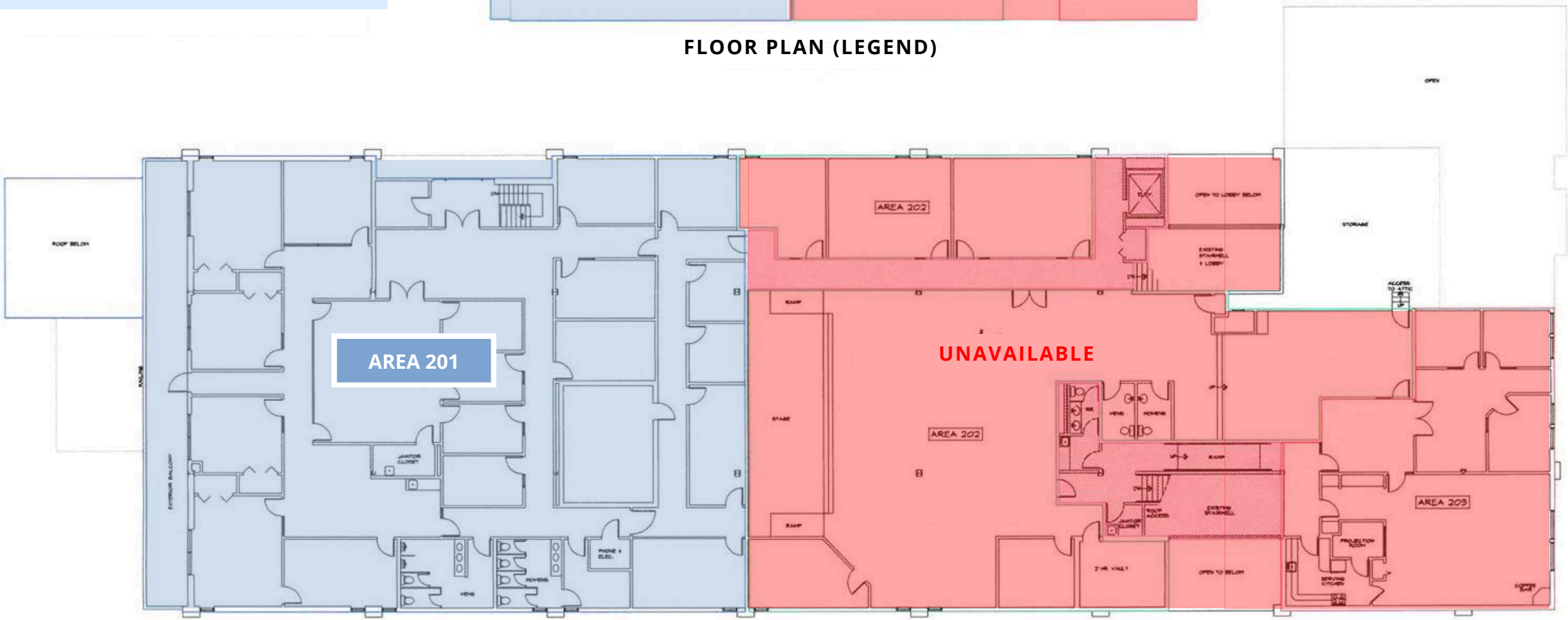
805 N MURRAY (2ND FLOOR PLAN)

SPACES AVAILABLE:

- **Area 201** ± 9,227 SF



FLOOR PLAN (LEGEND)



2727 N. Cascade Avenue,
Suite 127, Colorado Springs, CO 80907

719.227.9987

www.peakcp.net

Peak Commercial Properties believes information contained herein, while not guaranteed, is from sources they believe reliable. Price, terms, and information are subject to change without notice.

FOR LEASE

805 N Murray Blvd.
Colorado Springs, CO 80915



* The particulars, details and visuals shown herein are intended to give a general idea of the property. As such, they are not to be relied upon as statements of fact.



2727 N. Cascade Avenue,
Suite 127, Colorado Springs, CO 80907



719.227.9987



www.peakcp.net

Peak Commercial Properties believes information contained herein, while not guaranteed, is from sources they believe reliable. Price, terms, and information are subject to change without notice.

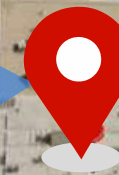
FOR LEASE

805 N Murray Blvd.
Colorado Springs, CO 80915

AERIAL

GALLEY ROAD

N MURRAY BLVD



* The particulars, details and visuals shown herein are intended to give a general idea of the property. As such, they are not to be relied upon as statements of fact.



2727 N. Cascade Avenue,
Suite 127, Colorado Springs, CO 80907



719.227.9987



www.peakcp.net



Peak Commercial Properties believes information contained herein, while not guaranteed, is from sources they believe reliable. Price, terms, and information are subject to change without notice.