

17th + GRAND

CLASS A OFFICE

MUSIC ROW + NASHVILLE, TN

Elegance + Convenience + Abundance



Specs + Features

- + Located in the heart of Midtown Nashville within the iconic Music Row neighborhood on the corner of 17th Ave. South & Grand Avenue
- + 166,534 RSF Boutique Class A office building
- + 9 Stories
- + 34,000 RSF Floorplates (typical floor)
18,394 RSF Creative “liner office”
- + 3/1,000 Parking ratio in podium structured parking
- + Floor to ceiling glass window systems
- + Club level fitness center and locker rooms/showers
- + Hi-tech conference/training center
- + Outdoor amenity deck on level 5 (Sky Lobby)
- + Programmed to include limited ground floor retail spaces
- + Main level shipping/receiving
- + LEED Silver certified
- + Numerous walkable amenities, limited traffic



Retail + Office + Parking



STACKING PLAN



THE GULCH

VIRGIN HOTEL

35 MUSIC SQUARE

18TH & CHET

DIVISION STREET ENTERTAINMENT

17th + GRAND

Accessible + Convenient Location

17th + Grand is ideally located in the Midtown area of Nashville just blocks from the Vanderbilt University campus, and proximate to the Division Street entertainment district, one of Nashville's most vibrant nightlife destinations. Major traffic and population drivers in Midtown include: Vanderbilt University and Vanderbilt Medical Center, St. Thomas Midtown Hospital, Music Row (music industry offices), hotels, restaurants and retail. This area of Midtown represents one of the densest neighborhoods in Nashville for a commercial project.

DRIVE TIMES FROM 17TH + GRAND

Vanderbilt University	0.3 miles	1 min
Belmont University	0.9 miles	3 min
Downtown	1.4 miles	6 min
Green Hills	3.3 miles	12 min
BNA Airport	8.2 miles	11 min
Brentwood	9.9 miles	15 min
Hendersonville	19.0 miles	25 min
Franklin	21.1 miles	27 min





Arrive + Thrive with Amenities Galore



LEED Silver certified



Fitness center with locker rooms and showers



Hi-tech conference/training center



Elevator provides impressive views down
17th Avenue / Music Row towards
Downtown Nashville



Sky lobby with clean, modern design



Bike storage



Floor-to-ceiling glass window systems



Exterior yoga lawn



Numerous walkable amenities



Vibrant + Walkable Neighborhood

RESTAURANTS

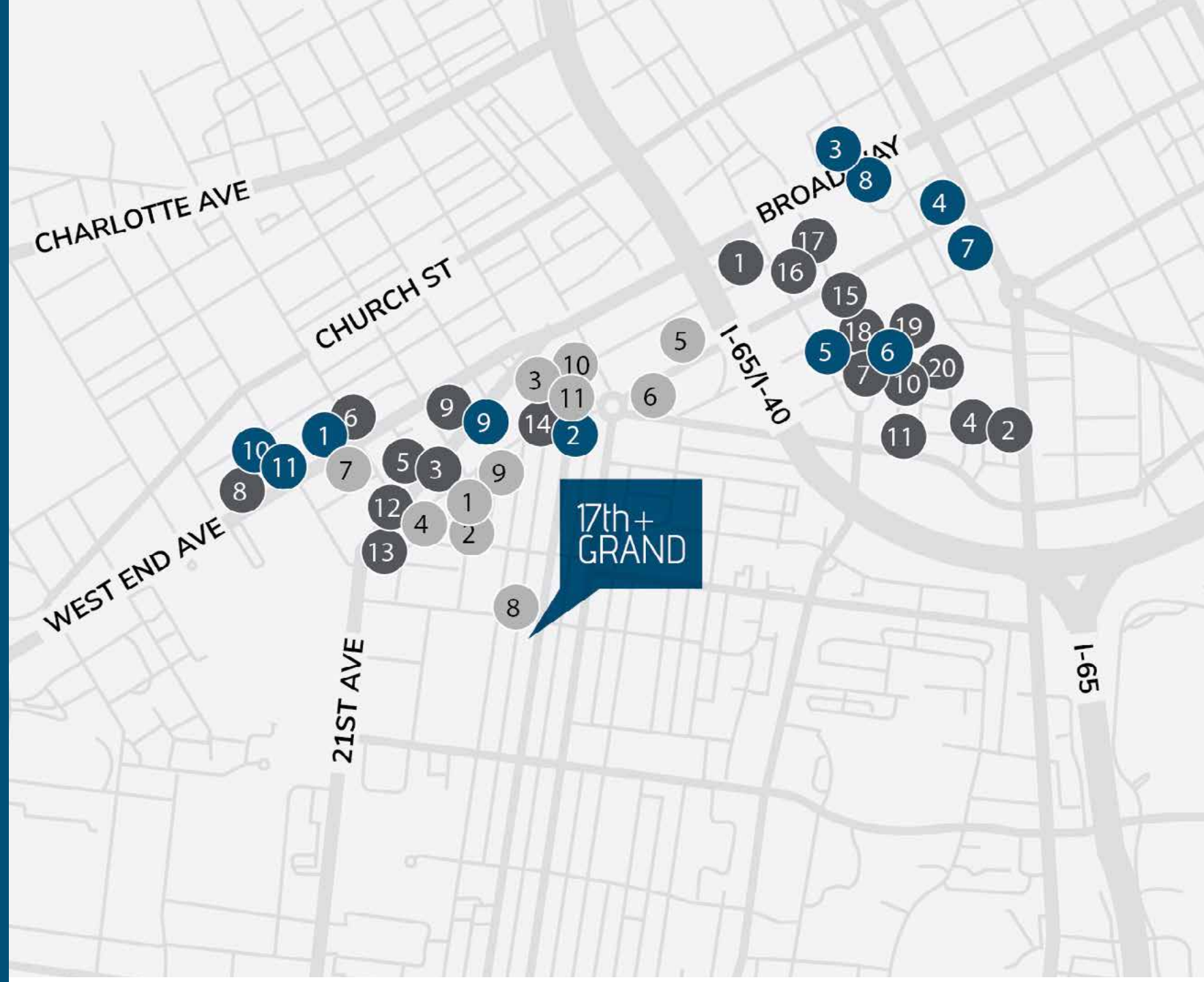
- | | |
|----------------------------|---------------------|
| 1 Adele's | 11 Otaku Ramen |
| 2 Arnold's Country Kitchen | 12 Flatiron |
| 3 Urban Cookhouse | 13 Nada |
| 4 Chef and I | 14 The Catbird Seat |
| 5 Tavern | 15 Milk & Honey |
| 6 Amerigo | 16 Whiskey Kitchen |
| 7 Burger Republic | 17 Virago |
| 8 Jason's Deli | 18 Taziki's |
| 9 Hattie B's Hot Chicken | 19 Biscuit Love |
| 10 Superica | 20 Peg Leg Porker |

HOTELS

- 1 Graduate Hotel Nashville
- 2 Virgin Hotel Nashville
- 3 Grand Hyatt Nashville
- 4 JW Marriott Nashville
- 5 W Hotel Nashville
- 6 Thompson Nashville
- 7 The Westin Nashville
- 8 Autograph Collection
- 9 Union Station Hotel
- 10 Embassy Suites by Hilton
- 11 Loews Vanderbilt Plaza Hotel

RESIDENTIAL

- 1 Kenect Nashville
- 2 The Morris
- 3 Skyhouse
- 4 Aertson Midtown
- 5 1505 Demonbreun
- 6 Camden Music Row
- 7 2010 West End
- 8 Millennium Music Row
- 9 Artisan on 18th
- 10 The Cadence



Business + Lifestyle Intersect

Considered the heart of Nashville's entertainment industry, this eclectic Midtown Nashville neighborhood is where many locals call home. From beloved dive bars with quirky character to original Nashville artistry, this historic district has roots that go back over 60 years. Spanning 16th and 17th Avenues South, known as Music Square East and West, respectively, points of interest in the district include the historic RCA Studio B, Columbia's Historic Quonset Hut, the first recording studio on Music Row, and Owen Bradley Park, as well as numerous shops and upscale eateries.

WITHIN 1 MILE RADIUS:

Total Daytime Population

84,000

Bachelor's Degree or Higher

64%

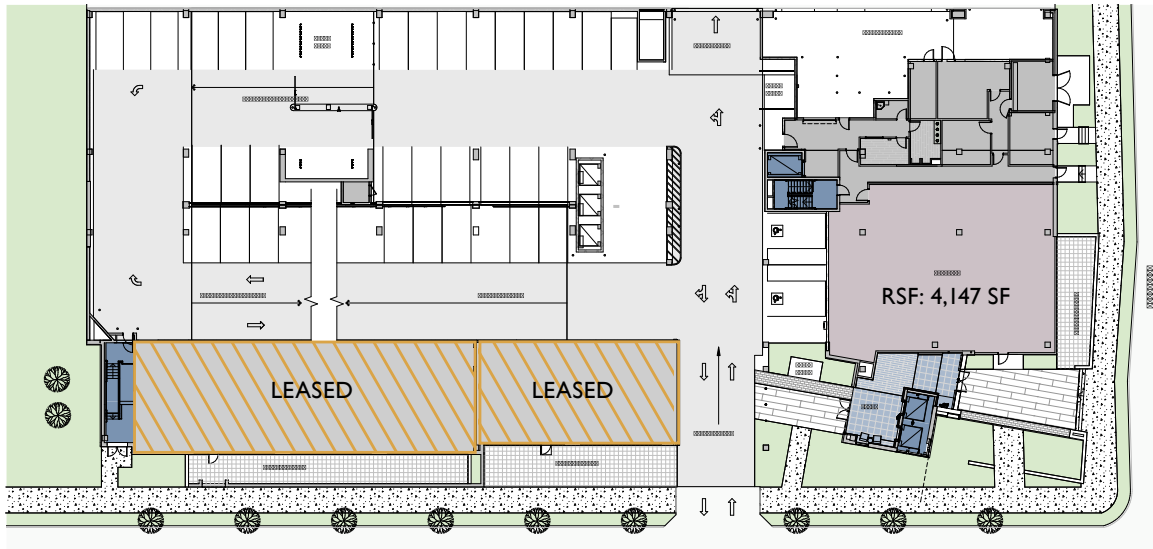
Avg. Household Income

\$89,000

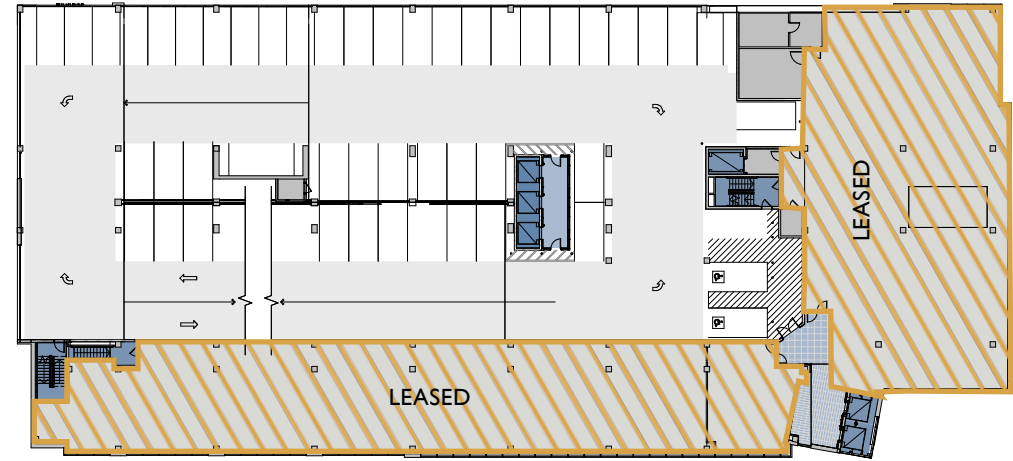


Floor Plans (floors 1-6)

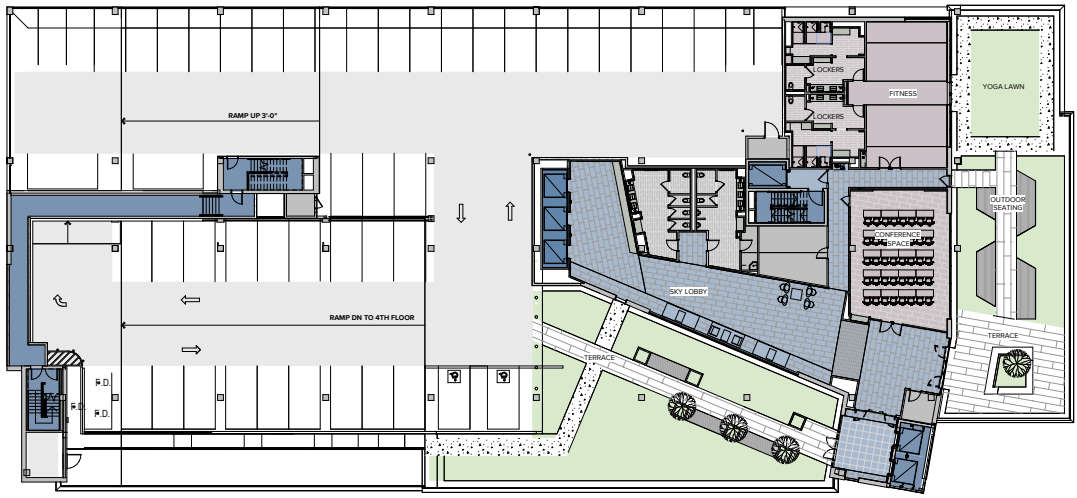
1st Floor Plan



3rd Floor Plan

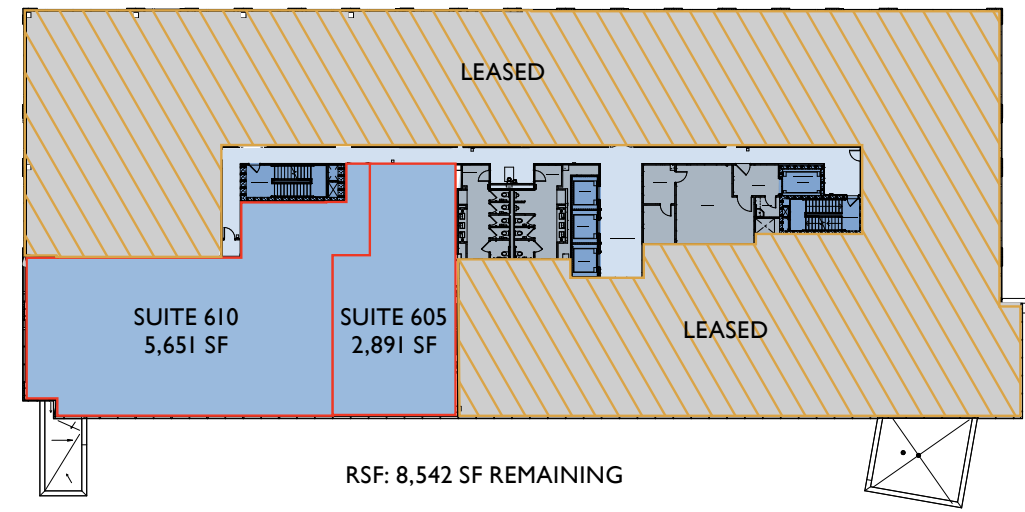


5th Floor Plan



Spec Suites

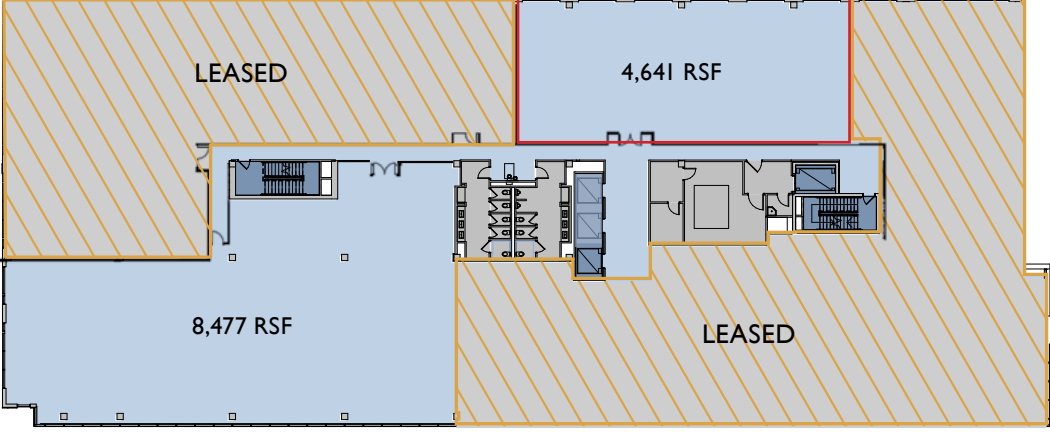
6th Floor Plan



Floor Plans (floors 7-9)

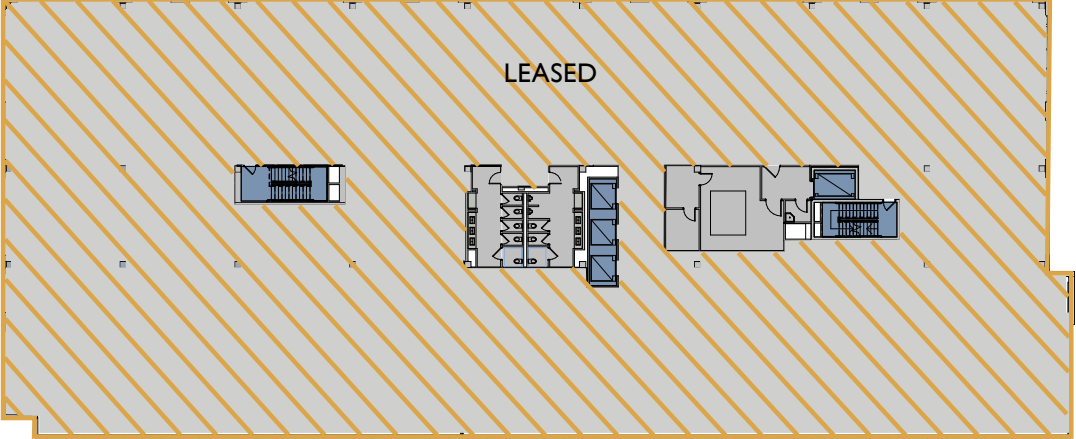
Spec Suite

7th Floor Plan

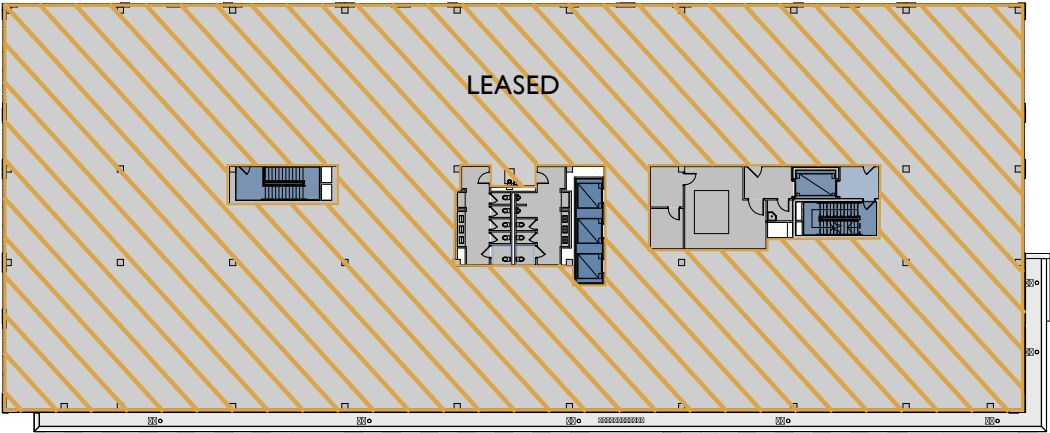


RSF: 13,118 SF REMAINING

8th Floor Plan



9th Floor Plan



17th + GRAND

Robert W. Lowe, Jr.
EXECUTIVE MANAGING DIRECTOR
rob.lowe@streamrealty.com
T 615.476.2910

Adam Rumsey
VICE PRESIDENT - OFFICE
adam.rumsey@streamrealty.com
T 615.916.1006

Allie Hall
VICE PRESIDENT
Ahall@HallEmery.com
T 615.764.9077



STREAM

601 11th Ave. North, Suite 900
Nashville, TN 37203
T: 615.795.0000
www.streamrealty.com