

Industrial Warehouse For Sale

Seller Financing Available!!



- For Sale / Seller Financing Available
- Purchase Price: Call Agents for Pricing
- Approx. 6,246 Sq. Ft. Total
- Lot Size: 0.39 Acres
- Clear Height: 16'
- Ground Level Doors: (2) 10'X12'
- Power: 440 Volt, 600 Amp, 3 Phase
- Lighting: Metal halide, T-5 & LED
- Heat & Cooling: Gas-forced heat with evaporative cooling in warehouse
- Construction: Block
- Zoned: M-1
- Year Built: 1995
- Multi-Tenant Configuration
- 6" reinforced concrete
- Data: Broadband service available
- Paint Booth & Shipping Container Available w/ Purchase



2040 E. Murray Holladay Road, Ste. 310

Holladay, UT 84117

801.876.6070

Justin Welch

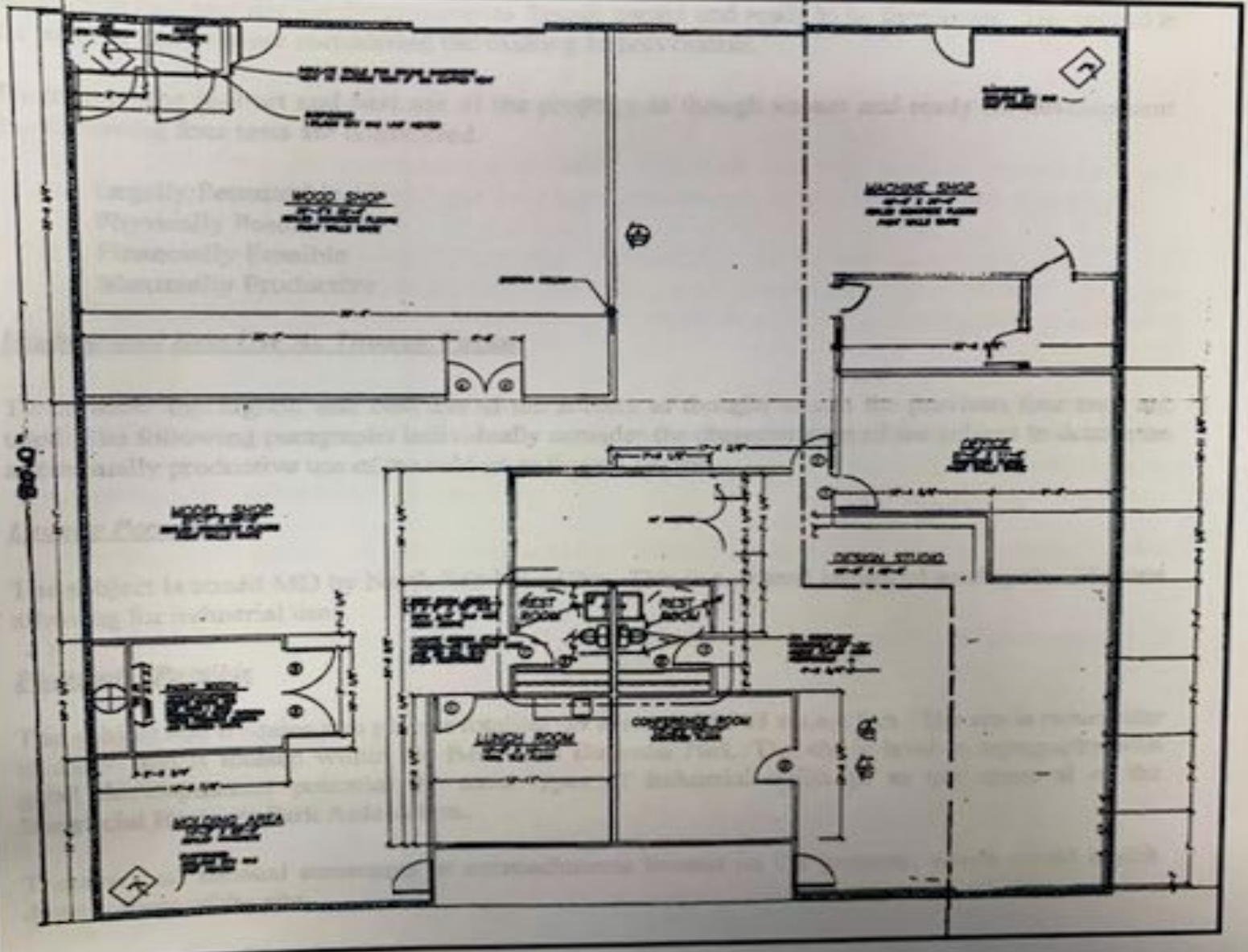
Principal Broker

Cell 801.718.8842

Office 801.876.6071

justin@cresutah.com

FLOOR PLAN



This information is deemed reliable, but is not guaranteed. Buyer/Tenant to verify all

2040 E. Murray Holladay Road, Ste. 310

Holladay, UT 84117

801.876.6070

Justin Welch

Principal Broker

Cell 801.718.8842

Office 801.876.6071

justin@cesutah.com