

SOUTHMORE AVENUE (PUBLIC RIGHT-OF-WAY WIDTH VARIES)

N 87°40'10" E 81.211'

POINT OF BEGINNING

PRIVACY EASEMENT

7.5' PRIVATE SAN. SE. EASEMENT NO. 541245 HOUR

5' PRIVATE SAN. SE. EASEMENT NO. 541245 HOUR

5' PRIVATE SAN. SE. EASEMENT NO. 541245 HOUR

5' PRIVATE SAN. SE. EASEMENT NO. 541245 HOUR

5' PRIVATE SAN. SE. EASEMENT NO. 541245 HOUR

5' PRIVATE SAN. SE. EASEMENT NO. 541245 HOUR

5' PRIVATE SAN. SE. EASEMENT NO. 541245 HOUR

5' PRIVATE SAN. SE. EASEMENT NO. 541245 HOUR

5' PRIVATE SAN. SE. EASEMENT NO. 541245 HOUR

5' PRIVATE SAN. SE. EASEMENT NO. 541245 HOUR

5' PRIVATE SAN. SE. EASEMENT NO. 541245 HOUR

5' PRIVATE SAN. SE. EASEMENT NO. 541245 HOUR

5' PRIVATE SAN. SE. EASEMENT NO. 541245 HOUR

5' PRIVATE SAN. SE. EASEMENT NO. 541245 HOUR

5' PRIVATE SAN. SE. EASEMENT NO. 541245 HOUR

5' PRIVATE SAN. SE. EASEMENT NO. 541245 HOUR

5' PRIVATE SAN. SE. EASEMENT NO. 541245 HOUR

5' PRIVATE SAN. SE. EASEMENT NO. 541245 HOUR

5' PRIVATE SAN. SE. EASEMENT NO. 541245 HOUR

5' PRIVATE SAN. SE. EASEMENT NO. 541245 HOUR

5' PRIVATE SAN. SE. EASEMENT NO. 541245 HOUR

5' PRIVATE SAN. SE. EASEMENT NO. 541245 HOUR

5' PRIVATE SAN. SE. EASEMENT NO. 541245 HOUR

5' PRIVATE SAN. SE. EASEMENT NO. 541245 HOUR

5' PRIVATE SAN. SE. EASEMENT NO. 541245 HOUR

5' PRIVATE SAN. SE. EASEMENT NO. 541245 HOUR

5' PRIVATE SAN. SE. EASEMENT NO. 541245 HOUR

5' PRIVATE SAN. SE. EASEMENT NO. 541245 HOUR

5' PRIVATE SAN. SE. EASEMENT NO. 541245 HOUR

5' PRIVATE SAN. SE. EASEMENT NO. 541245 HOUR

5' PRIVATE SAN. SE. EASEMENT NO. 541245 HOUR

5' PRIVATE SAN. SE. EASEMENT NO. 541245 HOUR

5' PRIVATE SAN. SE. EASEMENT NO. 541245 HOUR

5' PRIVATE SAN. SE. EASEMENT NO. 541245 HOUR

5' PRIVATE SAN. SE. EASEMENT NO. 541245 HOUR

5' PRIVATE SAN. SE. EASEMENT NO. 541245 HOUR

5' PRIVATE SAN. SE. EASEMENT NO. 541245 HOUR

5' PRIVATE SAN. SE. EASEMENT NO. 541245 HOUR

5' PRIVATE SAN. SE. EASEMENT NO. 541245 HOUR

5' PRIVATE SAN. SE. EASEMENT NO. 541245 HOUR

5' PRIVATE SAN. SE. EASEMENT NO. 541245 HOUR

5' PRIVATE SAN. SE. EASEMENT NO. 541245 HOUR

5' PRIVATE SAN. SE. EASEMENT NO. 541245 HOUR

5' PRIVATE SAN. SE. EASEMENT NO. 541245 HOUR

5' PRIVATE SAN. SE. EASEMENT NO. 541245 HOUR

5' PRIVATE SAN. SE. EASEMENT NO. 541245 HOUR

5' PRIVATE SAN. SE. EASEMENT NO. 541245 HOUR

5' PRIVATE SAN. SE. EASEMENT NO. 541245 HOUR

5' PRIVATE SAN. SE. EASEMENT NO. 541245 HOUR

5' PRIVATE SAN. SE. EASEMENT NO. 541245 HOUR

5' PRIVATE SAN. SE. EASEMENT NO. 541245 HOUR

5' PRIVATE SAN. SE. EASEMENT NO. 541245 HOUR

5' PRIVATE SAN. SE. EASEMENT NO. 541245 HOUR

5' PRIVATE SAN. SE. EASEMENT NO. 541245 HOUR

5' PRIVATE SAN. SE. EASEMENT NO. 541245 HOUR

5' PRIVATE SAN. SE. EASEMENT NO. 541245 HOUR

5' PRIVATE SAN. SE. EASEMENT NO. 541245 HOUR

5' PRIVATE SAN. SE. EASEMENT NO. 541245 HOUR

5' PRIVATE SAN. SE. EASEMENT NO. 541245 HOUR

5' PRIVATE SAN. SE. EASEMENT NO. 541245 HOUR

5' PRIVATE SAN. SE. EASEMENT NO. 541245 HOUR

5' PRIVATE SAN. SE. EASEMENT NO. 541245 HOUR

5' PRIVATE SAN. SE. EASEMENT NO. 541245 HOUR

5' PRIVATE SAN. SE. EASEMENT NO. 541245 HOUR

5' PRIVATE SAN. SE. EASEMENT NO. 541245 HOUR

5' PRIVATE SAN. SE. EASEMENT NO. 541245 HOUR

5' PRIVATE SAN. SE. EASEMENT NO. 541245 HOUR

5' PRIVATE SAN. SE. EASEMENT NO. 541245 HOUR

5' PRIVATE SAN. SE. EASEMENT NO. 541245 HOUR

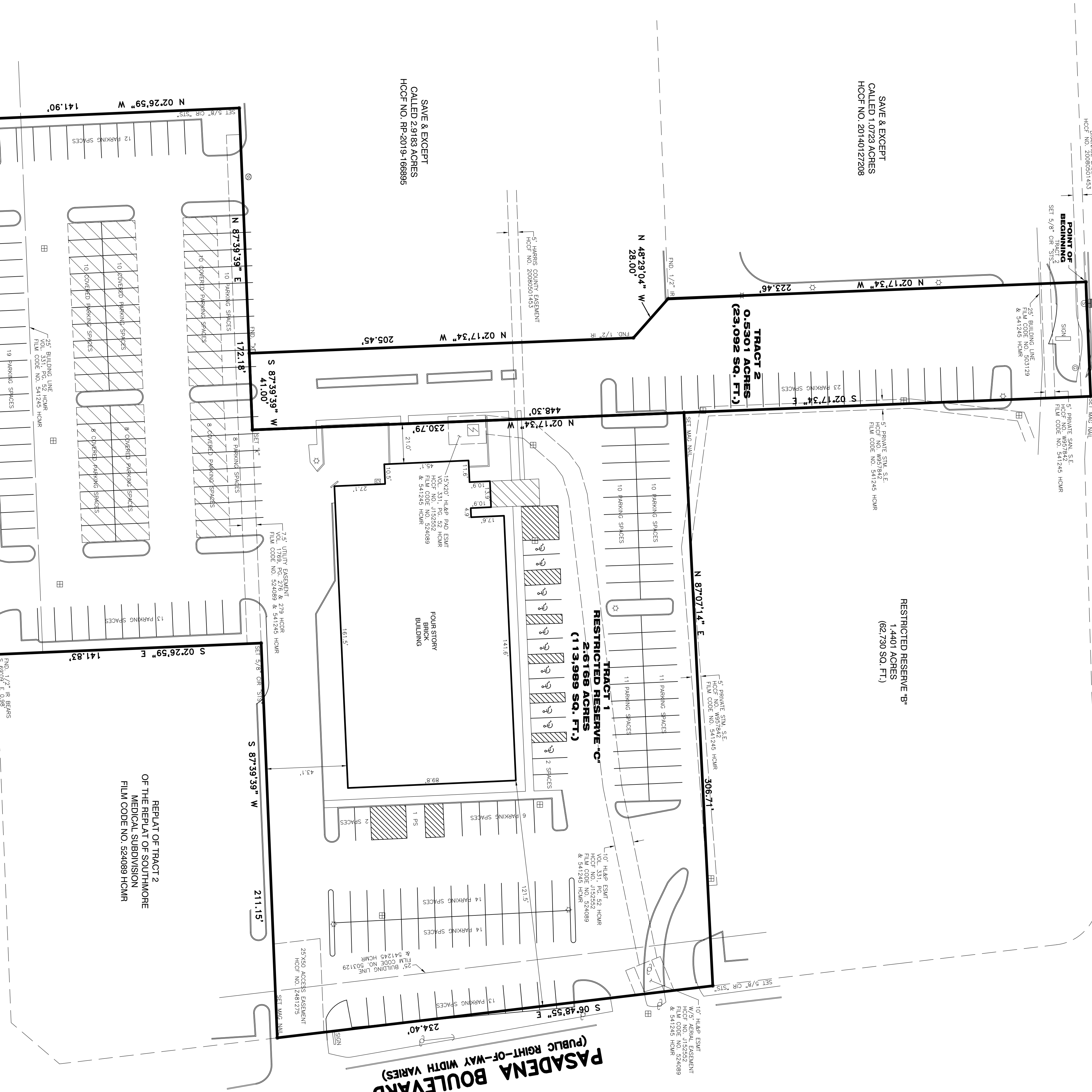
LEGAL DESCRIPTION TRACT 2 BEING A 0.5301 ACRE (23,092 SQUARE FEET) TRACT OF LAND OUT OF AND PART OF RESTRICTED RESERVE "A", BLOCK 1, C/S SOUTHMORE, ACCORDING TO THE MAP RECORDED UNDER FILM CODE NUMBER 541245 OF THE MAP RECORDS OF HARRIS COUNTY, TEXAS, SAID 0.5301 ACRE TRACT BEING MORE OR LESS THE SOUTH RIGHT-OF-WAY LINE OF SOUTHMORE AVENUE (WIDTH VARIES) BEING NORTH 87 DEGREES 40 MINUTES 10 SECONDS EAST;

BEING A 0.5301 ACRE (23,092 SQUARE FEET) TRACT OF LAND OUT OF AND PART OF RESTRICTED RESERVE "A", BLOCK 1, C/S SOUTHMORE, ACCORDING TO THE MAP RECORDED UNDER FILM CODE NUMBER 541245 OF THE MAP RECORDS OF HARRIS COUNTY, TEXAS, SAID 0.5301 ACRE TRACT BEING MORE OR LESS THE SOUTH RIGHT-OF-WAY LINE OF SOUTHMORE AVENUE (WIDTH VARIES) BEING NORTH 87 DEGREES 40 MINUTES 10 SECONDS EAST; BEING A 0.5301 ACRE (23,092 SQUARE FEET) TRACT OF LAND OUT OF AND PART OF RESTRICTED RESERVE "A", BLOCK 1, C/S SOUTHMORE, ACCORDING TO THE MAP RECORDED UNDER FILM CODE NUMBER 541245 OF THE MAP RECORDS OF HARRIS COUNTY, TEXAS, SAID 0.5301 ACRE TRACT BEING MORE OR LESS THE SOUTH RIGHT-OF-WAY LINE OF SOUTHMORE AVENUE (WIDTH VARIES) BEING NORTH 87 DEGREES 40 MINUTES 10 SECONDS EAST; BEING A 0.5301 ACRE (23,092 SQUARE FEET) TRACT OF LAND OUT OF AND PART OF RESTRICTED RESERVE "A", BLOCK 1, C/S SOUTHMORE, ACCORDING TO THE MAP RECORDED UNDER FILM CODE NUMBER 541245 OF THE MAP RECORDS OF HARRIS COUNTY, TEXAS, SAID 0.5301 ACRE TRACT BEING MORE OR LESS THE SOUTH RIGHT-OF-WAY LINE OF SOUTHMORE AVENUE (WIDTH VARIES) BEING NORTH 87 DEGREES 40 MINUTES 10 SECONDS EAST;

- LEGEND: 1. EMBLEMMENT 2. BUILDING LINE 3. EASEMENT 4. HOUSTON LIGHTING & POWER 5. IRON PIPE 6. OPENED IRON ROD 7. STAMPED SOUTH TEXAS SURVEYING 8. HARRIS COUNTY DEED RECORDS 9. HARRIS COUNTY MAP RECORDS 10. POINT OF COMMENCEMENT 11. PARKING SPACES 12. SQUARE FEET 13. UTILITY EASEMENT 14. BARBED WIRE FENCE 15. CONCRETE 16. COVERED CONCRETE 17. OVERHEAD ELECTRIC LINES 18. WOOD FENCE 19. WIRE 20. CATCH BASIN 21. CATCH BOX 22. ELECTRIC MH 23. FIRE HYDRANT 24. FIBER OPTIC MARKER 25. GAS VALVE 26. GAS METER 27. CURB INLET 28. MANHOLE 29. MONITORING WELL 30. PIPELINE MARKER 31. SERVICE POLE 32. SANITARY MANHOLE 33. TRANSFORMER 34. TRAFFIC SIGNAL BOX 35. UNDERGROUND CABLE MARKER 36. WATER WELL 37. WATER VALVE 38. BENCHMARK

NOTES: 1. BASIS OF BEARING IS THE SOUTH R.O.W. LINE OF SOUTHMORE AVENUE BEING N 87°40'10" E 81.211'... 2. SURVEYOR DID NOT ABSTRACT PROPERTY SURVEY BASED ON LEGAL DESCRIPTIONS... 3. NOTHING IN THIS SURVEY IS INTENDED TO EXPRESS AN OPINION REGARDING OWNERSHIP... 4. THE WORD CERTIFY IS UNDERSTOOD TO BE AN EXPRESSION OF PROFESSIONAL JUDGMENT... 5. THE FININGS AND OPINIONS OF SOUTH TEXAS SURVEYING ASSOCIATES, INC. REFLECTED HEREON ARE PRIVATE, CONFIDENTIAL AND INTENDED FOR THE USE OF THE INDIVIDUAL OR ENTITY FOR WHOM THIS WORK WAS PREPARED...

FLOOD NOTE: ACCORDING TO FIRM MAP NO. 17-0383-01A, THE AREA SHOWN IS NOT A FLOOD HAZARD AREA... EAST CURTIS STREET (60' PUBLIC RIGHT-OF-WAY)



PASADENA BOULEVARD (PUBLIC RIGHT-OF-WAY WIDTH VARIES)

PROPERTY LIES WITHIN FLOOD ZONE... EAST CURTIS STREET (60' PUBLIC RIGHT-OF-WAY)

RESTRICTED RESERVE "B" 1.4401 ACRES (62,730 SQ. FT.) FOUR STORY BRICK BUILDING 2.6166 ACRES (113,989 SQ. FT.) TRACT 1 RESTRICTED RESERVE "C" 2.6166 ACRES (113,989 SQ. FT.) TRACT 2 0.5301 ACRES (23,092 SQ. FT.) TRACT OF LAND OUT OF AND PART OF RESTRICTED RESERVE "A", BLOCK 1, C/S SOUTHMORE, ACCORDING TO THE MAP RECORDED UNDER FILM CODE NUMBER 541245 OF THE MAP RECORDS OF HARRIS COUNTY, TEXAS.

SURVEYORS CERTIFICATION: I, hereby certify that this survey was made on the ground and completed on this 13th day of December, 2019 and that this said correctly represents the facts and conditions shown thereon... FRED W. LAWTON, Registered Professional Land Surveyor No. 2281

SURVEY OF TRACT 1 ALL OF RESTRICTED RESERVE "C", BLOCK 1, C/S SOUTHMORE, ACCORDING TO THE MAP OR PLAT THEREOF RECORDED UNDER FILM CODE NUMBER 541245 OF THE MAP RECORDS OF HARRIS COUNTY, TEXAS.

ADDRESS: 906 SOUTHMORE AVENUE PASADENA, TEXAS 77002 JOB NO: 2473-19 DATE: 12-18-19 SCALE: 1" = 30' SHEET 1 OF 1 SOUTH TEXAS SURVEYING ASSOCIATES, INC. 11281 Richmond Ave, Bldg J, Suite 101, Houston, Texas 77082 281-556-6918 FAX 281-556-9331 281-556-6918 EMail 281-556-9331 Copyright 2019 South Texas Surveying Associates, Inc. JOB NO: 2473-19