



SIZE

68,798 square feet

DEMOGRAPHICS

	1 mile	3 mile	5 mile
Population	5,707	30,817	74,047
Households	2,109	11,921	28,554
Median HH Income (\$)	78,576	74,018	72,129

MAJOR TENANT(S)

Publix
Anytime Fitness



LOCATION

2732 North Lake Drive | Columbia, SC 29212

PROPERTY HIGHLIGHTS

- 68,798-sf Publix-anchored center
- National tenants including Great Clips, Anytime Fitness, State Farm, Beef O'Brady's
- Located in one of Columbia MSA's strongest retail submarkets, with the only Publix location in a 3-mile radius
- 30,800 residents in the 3-mile trade area with an household income over \$93,900
- Located next to Lake Murray, one of South Carolina's major tourist destinations

LEASING CONTACT

Mark Porter
Mobile (803) 338-6004
mporter@phillipsedison.com

MORE INFO






www.phillipsedison.com



MURRAY LANDING

2732 North Lake Drive | Columbia, SC 29212

SPACE	TENANT	SQ. FT.
SHAD1	Bank of America	
SHAD2	Matthew W. Cook	
0100	Tripp's Fine Cleaners	1,400 SF
0101	Great Clips	1,400 SF
0102	Nails 1st	1,400 SF
0103	China King	1,400 SF
0104	B's	2,800 SF
0106	Alodia's Italian Restaurant	2,800 SF
0108	H&R Block	1,400 SF
0200	Publix	44,840 SF
0303	Anytime Fitness	5,504 SF
0304	Dental Smart	1,415 SF
0401	ABC Package Store	1,355 SF
0402	Sherwin Williams	3,084 SF
TOTAL SQ. FT.		68,798

SITE LEGEND	
	Available
	Leased (not occupied)
	Site Boundary
	Occupied
	Owned by Others



DISCLAIMER - This site plan is for general information purposes only and is not intended to constitute representations and warranties by Landlord as to the ownership of the real property depicted herein or the identity or nature of any occupants thereof.

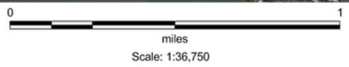
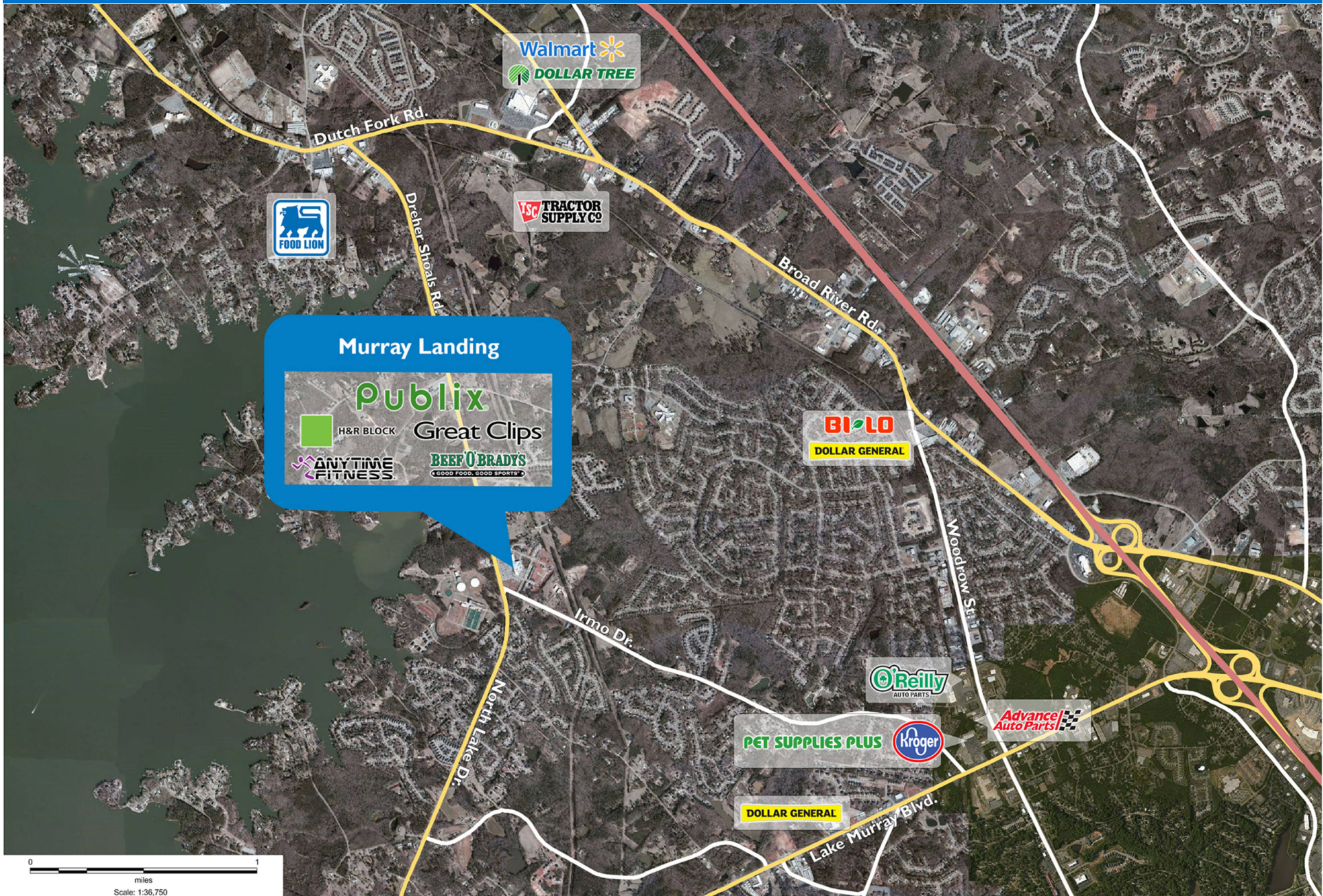
MURRAY LANDING

2732 North Lake Drive | Columbia, SC 29212



MURRAY LANDING

2732 North Lake Drive | Columbia, SC 29212



Demographic Summary - PopStats

1990 - 2000 - 2010 Census, Q4 2018 Estimates & Q2 2023 Projections
 Calculated using TAS Retrieval



Sep 10, 2019

Latitude: 34.097866 Longitude: -81.220816

Murray Landing Columbia, SC		1 Mile Radius	3 Mile Radius	5 Mile Radius	10 Mile Radius
Population	Current Estimated Population	5,538	30,562	73,595	215,353
	2023 Projected Population	5,766	32,087	77,844	229,754
	2000 Census Population	4,775	25,820	54,362	156,296
	1990 Census Population	3,545	21,646	39,803	121,655
	Historical Annual Growth 1990 to 2000	3.02%	1.78%	3.17%	2.54%
	Estimated Annual Growth 2000 to 2018	0.79%	0.90%	1.63%	1.72%
	Projected Annual Growth 2018 to 2023	0.81%	0.98%	1.13%	1.30%
	Median Age	40.78	42.42	40.90	39.25
Households	Current Estimated Households	2,052	11,825	28,379	84,183
	2023 Projected Households	2,137	12,410	29,970	89,829
	2000 Census Households	1,660	9,166	19,799	59,905
	1990 Census Households	1,217	7,288	13,905	44,756
	Historical Annual Growth 1990 to 2000	3.15%	2.32%	3.60%	2.96%
	Estimated Annual Growth 2000 to 2018	1.14%	1.37%	1.94%	1.83%
	Projected Annual Growth 2018 to 2023	0.82%	0.97%	1.10%	1.31%
Population per Household	2.70	2.58	2.59	2.46	
Population by Race	White	71.89%	71.99%	71.23%	68.51%
	Black or African American	19.16%	20.33%	20.74%	23.07%
	Asian & Pacific Islander	3.09%	2.32%	2.46%	2.19%
	Hispanic or Latino Population	3.96%	3.13%	3.23%	4.08%
	Other Races	1.90%	2.24%	2.34%	2.15%
Income	Average Household Income	\$97,425	\$92,902	\$89,346	\$81,146
	Median Household Income	\$77,052	\$72,857	\$71,089	\$63,011
	Per Capita Income	\$36,091	\$35,975	\$34,548	\$32,119
Education (Age 25+)	Elementary	0	0.32%	0.83%	2.01%
	Some High School	5.53%	4.60%	3.95%	5.07%
	High School Graduate	20.44%	19.16%	18.93%	22.37%
	Some College	18.15%	21.40%	21.19%	21.61%
	Associates Degree Only	10.28%	9.66%	9.35%	9.40%
	Bachelors Degree Only	29.35%	28.14%	29.31%	24.97%
	Graduate Degree	16.24%	16.74%	16.43%	14.58%
Business	Number of Businesses	49	722	1,908	5,787
	Total Number of Employees	807	9,487	27,946	96,368
	Employees per Business	16.48	13.14	14.65	16.65
	Residential Population per Business	113.02	42.34	38.58	37.22