

**SALE PRICE REDUCED**  
**\$4,256,000 (\$97.70/SF)**

**LEE & ASSOCIATES**  
COMMERCIAL REAL ESTATE SERVICES



**±43,560 SF**

**OF M2 ZONED INDUSTRIAL LAND**

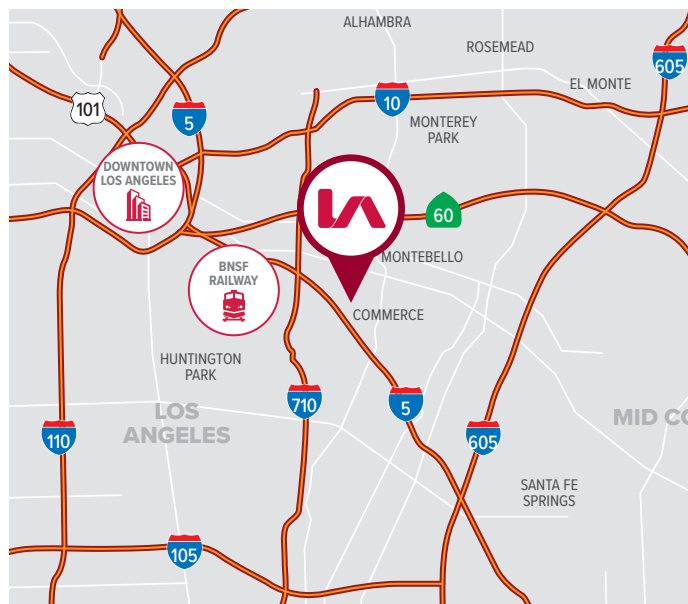
\*Picture is Edited to Show Cleared Site Potential.

**2041 DAVIE AVE, COMMERCE, CA 90040**

**LAND FOR SALE**

**PROPERTY HIGHLIGHTS**

- Build-To-Suit Opportunity
- Redevelopment Land Opportunity in Commerce
- Zoned Commerce M2 (Heavy Industrial)
- Rare Infill Location - Square Parcel Shape
- Corner Lot with Excellent Access & Visibility
- Ideal for Redevelopment - Utilities to Site
- Bldg. Damaged in Fire - Demo Required
- Contact Broker - Sold "As-Is" Where-Is"



**SALE PRICE**

**\$4,256,000 (\$97.70/SF)**

**FOR MORE INFORMATION, PLEASE CONTACT**

LOCAL EXPERTISE. INTERNATIONAL REACH. WORLD CLASS.



**TONY NAPLES**

Senior Vice President | LIC NO 01811344

tnaples@lee-associates.com

818.395.4373



**MATTISON BEHR**

Senior Associate | LIC NO 02091054

mbehr@lee-associates.com

818.434.9116

**LEE & ASSOCIATES**  
COMMERCIAL REAL ESTATE SERVICES

Lee & Associates | Downtown Los Angeles  
CORP ID 02174865

1201 N Main St  
Los Angeles, CA 90012

**LEE-ASSOCIATES.COM/DOWNTOWNLA**

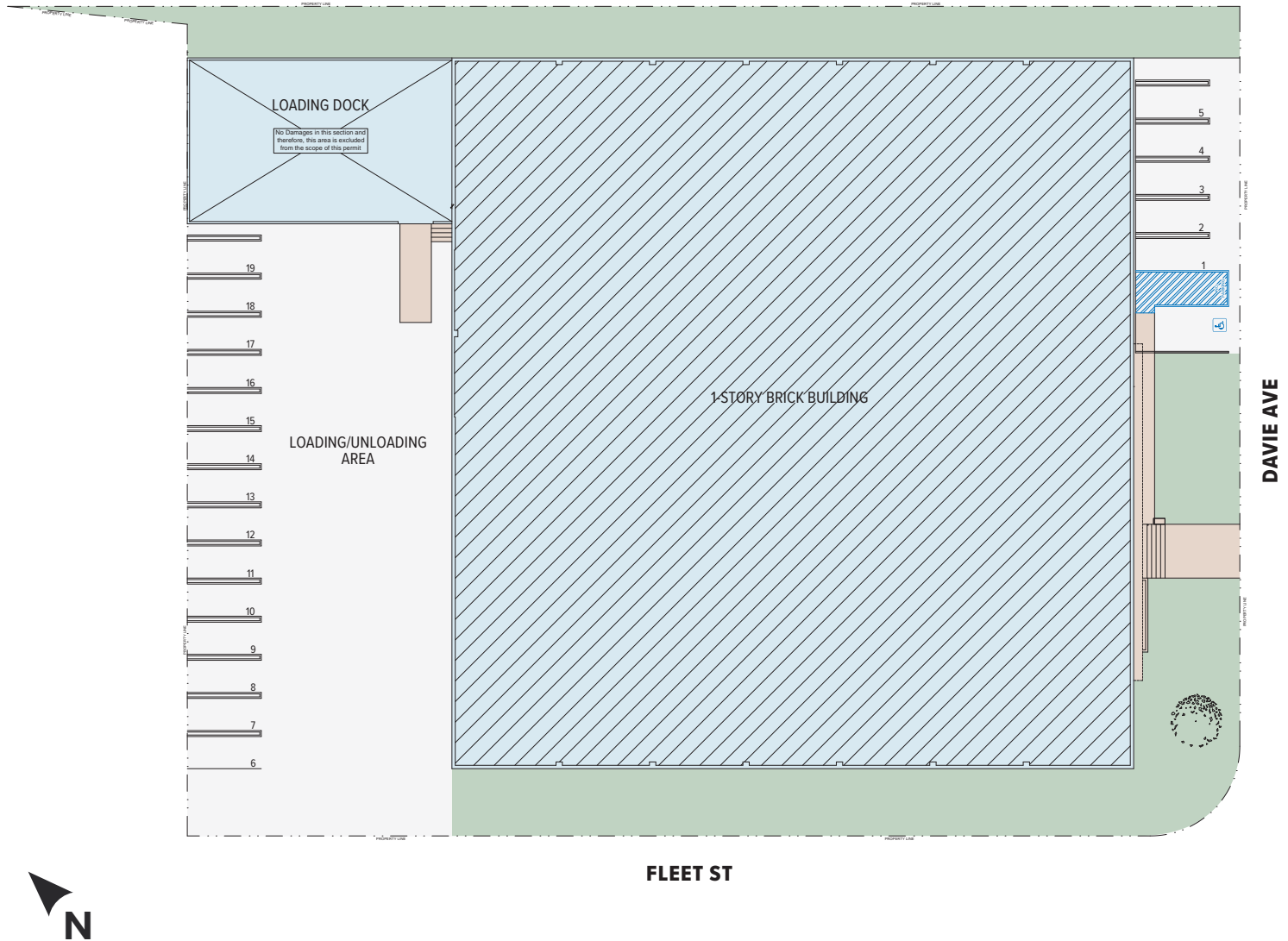
The information has been furnished from sources which we deem reliable, but for which we assume no liability. Any projections, opinions, assumptions or estimates used are for example only and do not represent the current or future performance of the property. Buyers should consult with their independent advisors to determine if the property is suitable for their needs.

LAND FOR  
**SALE**

±**43,560 SF OF CM-M2 INDUSTRIAL LAND**

2041 DAVIE AVE, COMMERCE, CA 90040

PROPERTY SITE PLAN



\*Current Redevelopment Plan - Reconstructing Prior Structure. Buyer to Verify

FOR MORE INFORMATION, PLEASE CONTACT

LOCAL EXPERTISE. INTERNATIONAL REACH. WORLD CLASS.



**TONY NAPLES**

Senior Vice President | LIC NO 01811344

tnaples@lee-associates.com

818.395.4373



**MATTISON BEHR**

Senior Associate | LIC NO 02091054

mbehr@lee-associates.com

818.434.9116



Lee & Associates | Downtown Los Angeles

1201 N Main St  
Los Angeles, CA 90012

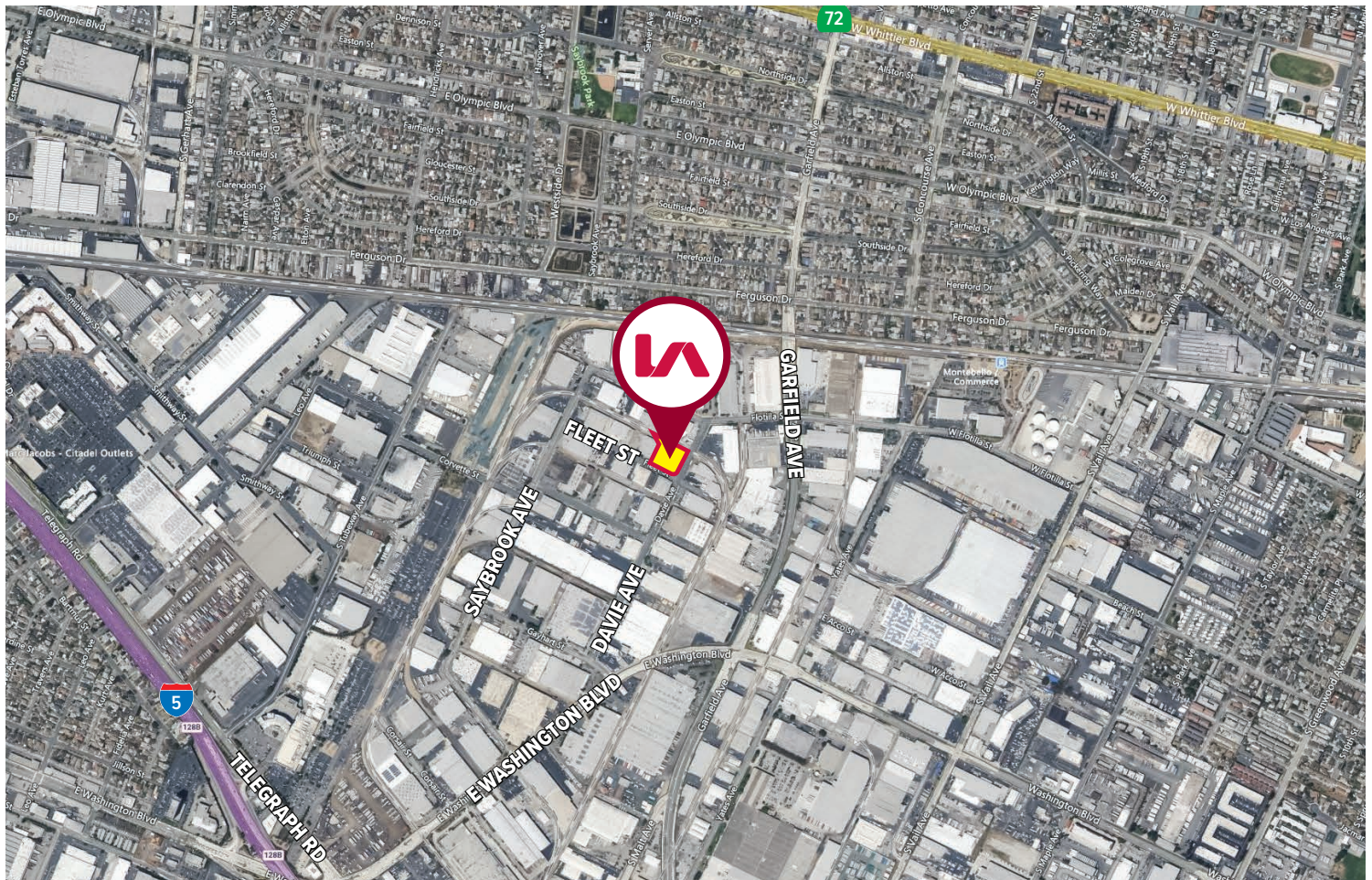
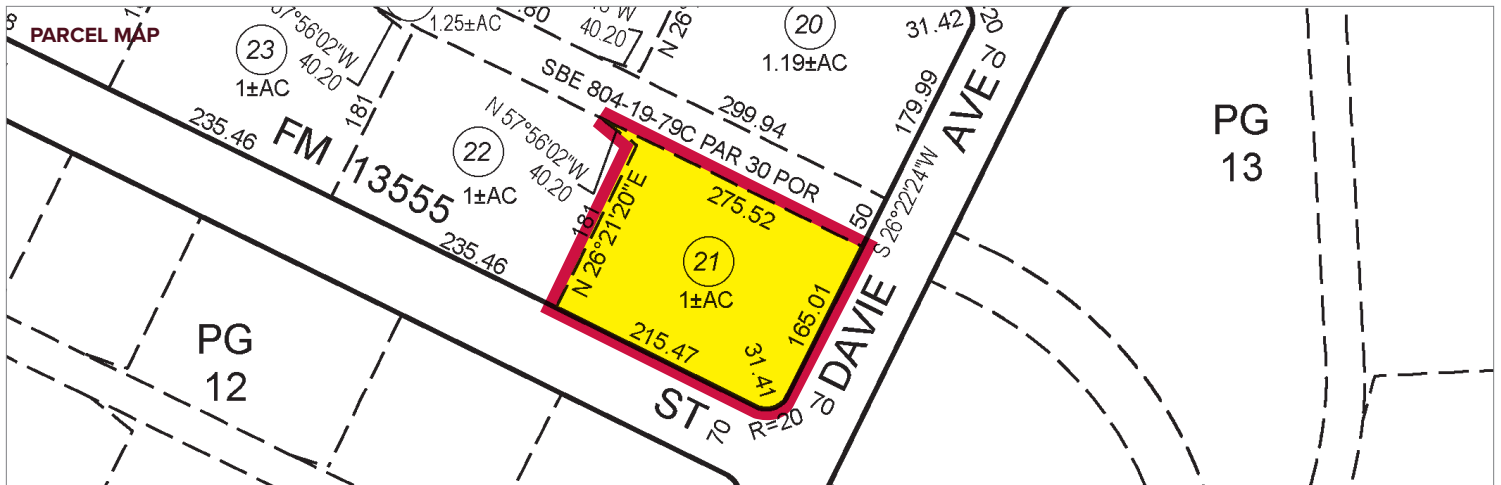
LEE-ASSOCIATES.COM/DOWNTOWNLA

The information has been furnished from sources which we deem reliable, but for which we assume no liability. Any projections, opinions, assumptions or estimates used are for example only and do not represent the current or future performance of the property. Buyers should consult with their independent advisors to determine if the property is suitable for their needs.

LAND FOR  
**SALE**

# ±43,560 SF OF CM-M2 INDUSTRIAL LAND

2041 DAVIE AVE, COMMERCE, CA 90040



FOR MORE INFORMATION, PLEASE CONTACT

LOCAL EXPERTISE. INTERNATIONAL REACH. WORLD CLASS.



## TONY NAPLES

Senior Vice President | LIC NO 01811344

tnaples@lee-associates.com

818.395.4373



## MATTISON BEHR

Senior Associate | LIC NO 02091054

mbehr@lee-associates.com

818.434.9116



Lee & Associates | Downtown Los Angeles  
CORP ID 02174865

1201 N Main St  
Los Angeles, CA 90012

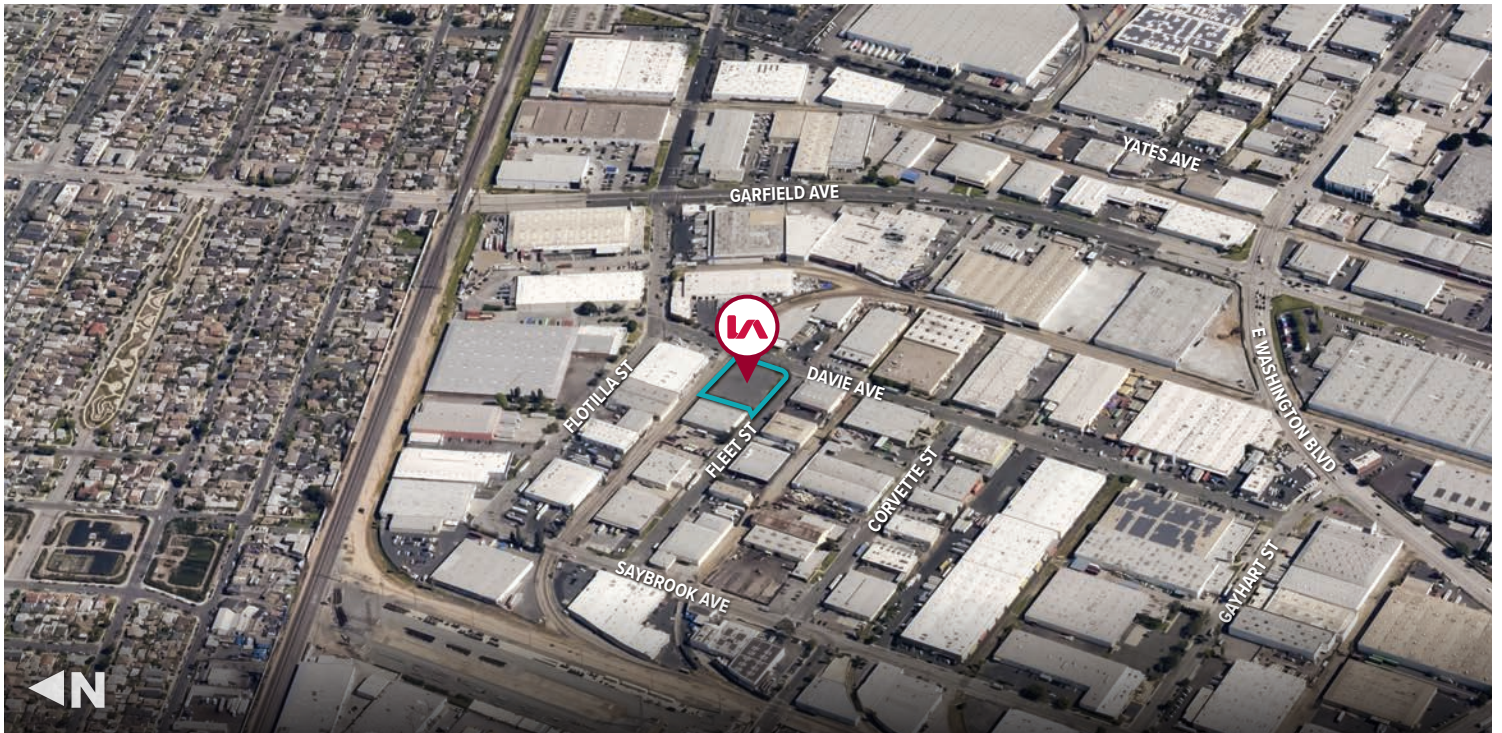
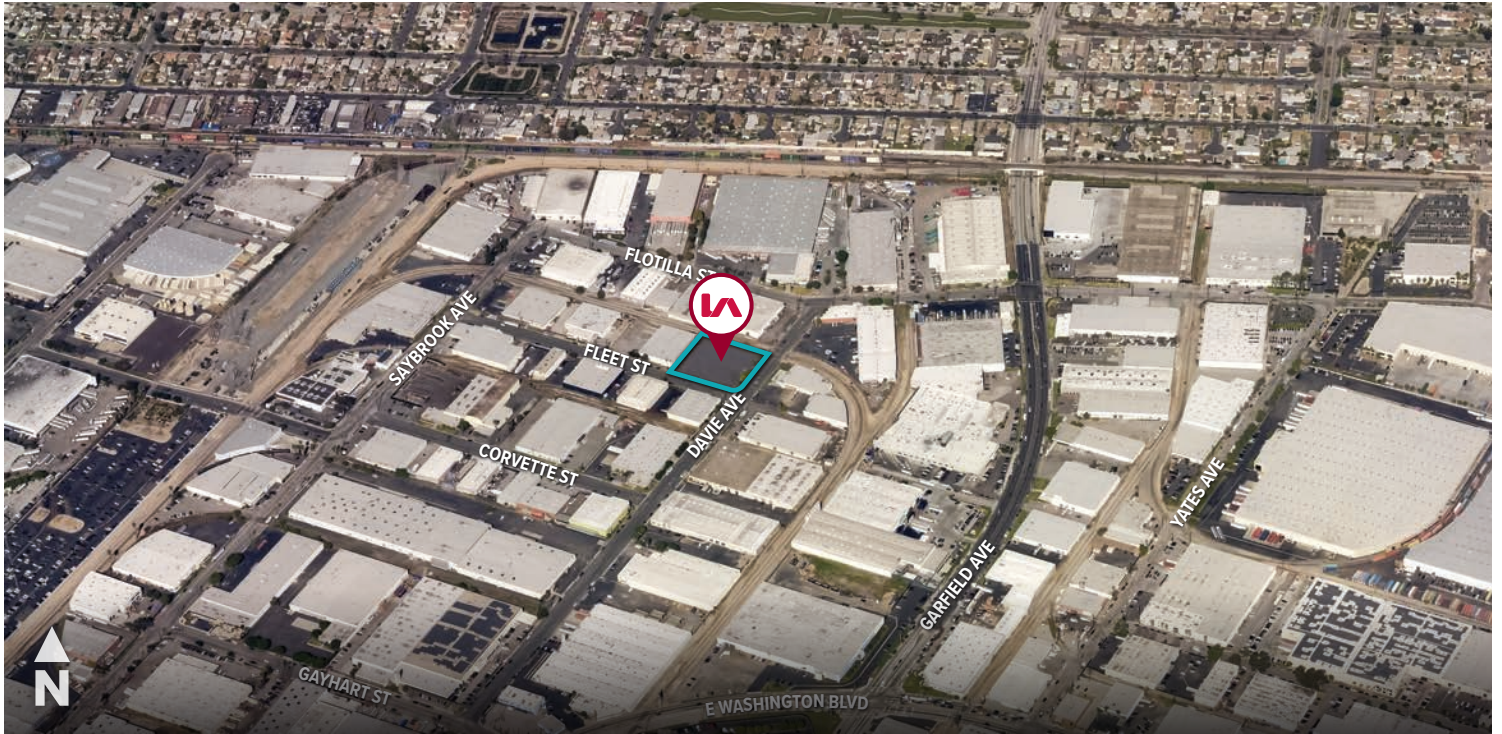
LEE-ASSOCIATES.COM/DOWNTOWNLA

The information has been furnished from sources which we deem reliable, but for which we assume no liability. Any projections, opinions, assumptions or estimates used are for example only and do not represent the current or future performance of the property. Buyers should consult with their independent advisors to determine if the property is suitable for their needs.

LAND FOR  
**SALE**

**±43,560 SF OF CM-M2 INDUSTRIAL LAND**

2041 DAVIE AVE, COMMERCE, CA 90040



FOR MORE INFORMATION, PLEASE CONTACT

LOCAL EXPERTISE. INTERNATIONAL REACH. WORLD CLASS.



**TONY NAPLES**

Senior Vice President | LIC NO 01811344

[tnaples@lee-associates.com](mailto:tnaples@lee-associates.com)

818.395.4373



**MATTISON BEHR**

Senior Associate | LIC NO 02091054

[mbehr@lee-associates.com](mailto:mbehr@lee-associates.com)

818.434.9116



Lee & Associates | Downtown Los Angeles  
CORP ID 02174865

1201 N Main St  
Los Angeles, CA 90012

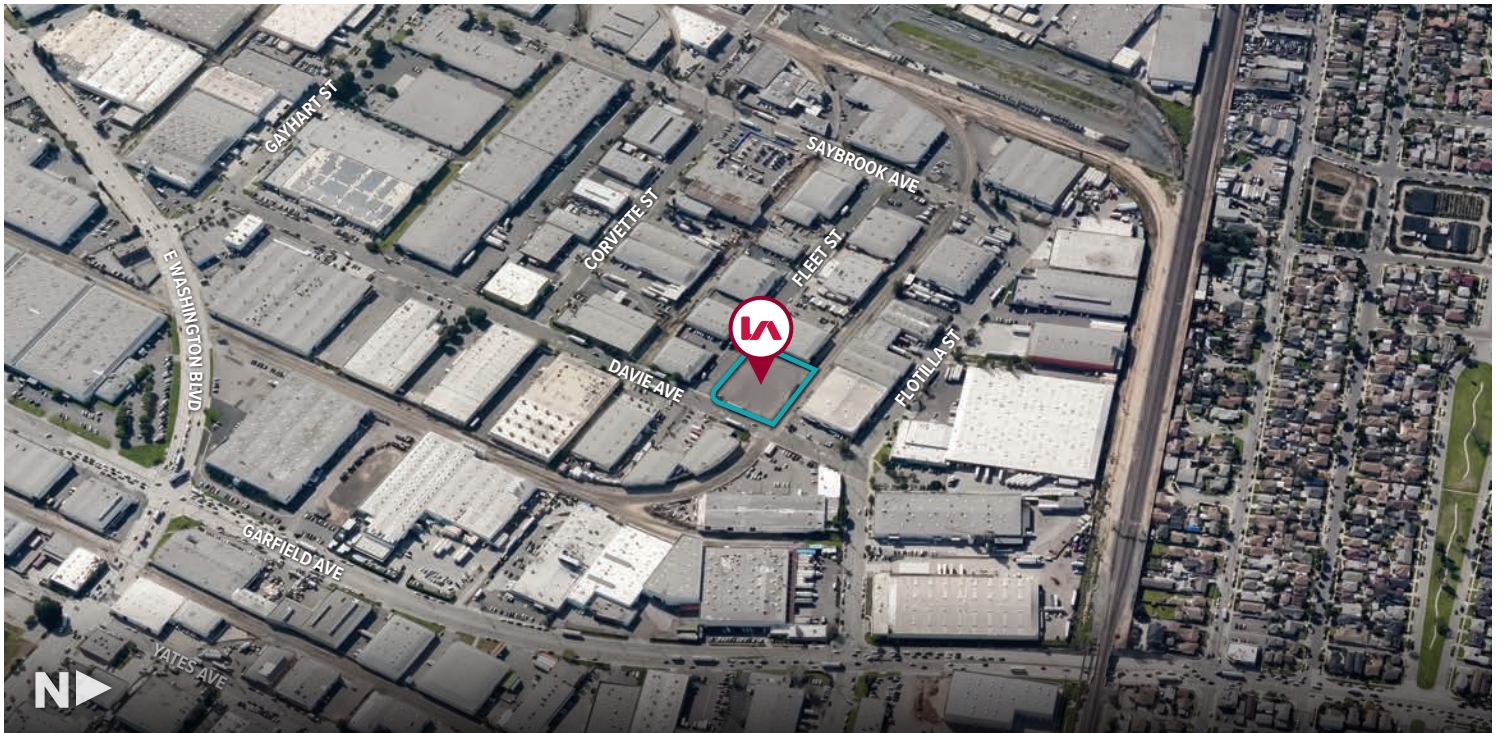
[LEE-ASSOCIATES.COM/DOWNTOWNLA](http://LEE-ASSOCIATES.COM/DOWNTOWNLA)

The information has been furnished from sources which we deem reliable, but for which we assume no liability. Any projections, opinions, assumptions or estimates used are for example only and do not represent the current or future performance of the property. Buyers should consult with their independent advisors to determine if the property is suitable for their needs.

LAND FOR  
**SALE**

**±43,560 SF OF CM-M2 INDUSTRIAL LAND**

2041 DAVIE AVE, COMMERCE, CA 90040



FOR MORE INFORMATION, PLEASE CONTACT

LOCAL EXPERTISE. INTERNATIONAL REACH. WORLD CLASS.



**TONY NAPLES**

Senior Vice President | LIC NO 01811344

[tnaples@lee-associates.com](mailto:tnaples@lee-associates.com)

818.395.4373



**MATTISON BEHR**

Senior Associate | LIC NO 02091054

[mbehr@lee-associates.com](mailto:mbehr@lee-associates.com)

818.434.9116



Lee & Associates | Downtown Los Angeles  
CORP ID 02174865

1201 N Main St  
Los Angeles, CA 90012

[LEE-ASSOCIATES.COM/DOWNTOWNLA](http://LEE-ASSOCIATES.COM/DOWNTOWNLA)

The information has been furnished from sources which we deem reliable, but for which we assume no liability. Any projections, opinions, assumptions or estimates used are for example only and do not represent the current or future performance of the property. Buyers should consult with their independent advisors to determine if the property is suitable for their needs.