

FOR LEASE

211 Benigno Boulevard
Bellmawr, New Jersey

CONTACT**Ross Abramsohn**

Vice President
+1 609 760 6139
ross.abramsohn@colliers.com

1317 Route 73, Suite 109
Mount Laurel, NJ 08054
+ 1 856 234 9300

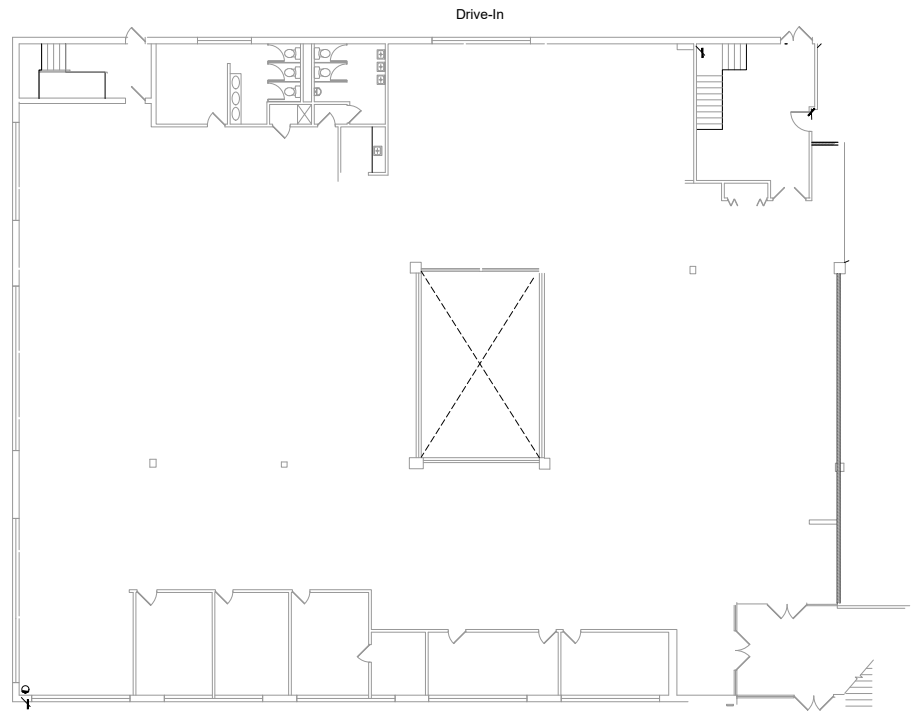
5,000–11,858 SF Available at Interstate Business Park

Available Space	5,000-11,858 SF
Building Size	40,503 SF
Site Area	1.47 Acres
Stories	2
Loading	1 Drive-in Door
Parking	125 Surface Spaces
Zoning	Industrial
Location	Immediate access to the New Jersey Turnpike, I-295, I-55, and State Route 42. Within 10 minutes to the Whitman Bridge and access to Philadelphia.
Amenities	<ul style="list-style-type: none">• Monument Signage• Additional Parking Available

FOR LEASE



5,000-11,858 SF
available

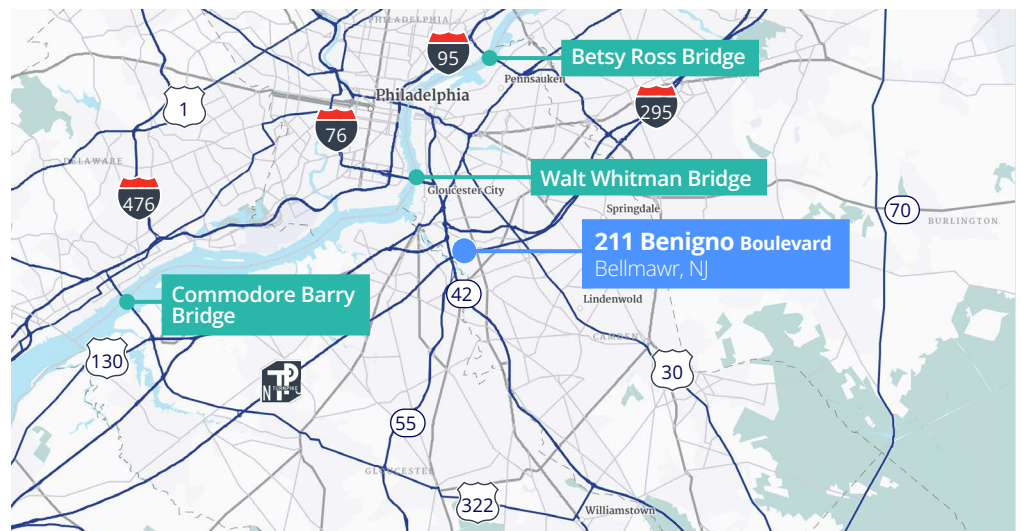


CONTACT

Ross Abramsohn

Vice President
+1 609 760 6139
ross.abramsohn@colliers.com

Location



1317 Route 73, Suite 109
Mount Laurel, NJ 08054
+ 1 856 234 9300

This document/email has been prepared by Colliers for advertising and general information only. Colliers makes no guarantees, representations or warranties of any kind, expressed or implied, regarding the information including, but not limited to, warranties of content, accuracy and reliability. Any interested party should undertake their own inquiries as to the accuracy of the information. Colliers excludes unequivocally all inferred or implied terms, conditions and warranties arising out of this document and excludes all liability for loss and damages arising there from. This publication is the copyrighted property of Colliers and /or its licensor(s). © 2024. All rights reserved. This communication is not intended to cause or induce breach of an existing listing agreement.