

**FOR LEASE**

**BIXBY KNOLLS  
OFFICE BUILDING**

**3939**

**ATLANTIC AVENUE**

**LONG BEACH, CA**

For more information contact:

**SHEVA HOSSEINZADEH**

CBC Blair | Principal

T: 562.400.5949 | O: 562.548.7410

BRE #01922147

sheva@cbcblair.com

**VACHEL MCKEEVER**

CBC Blair | Associate Vice President

T: 562.900.2938

BRE #02074710

vmckeever@cbcblair.com

**COLDWELL BANKER COMMERCIAL**

CBC Blair

333 West Broadway, Ste. 312

Long Beach, CA 90802

Company BRE #01330395



**FOR LEASE**

**BIXBY KNOLLS  
OFFICE BUILDING**

**3939**

**ATLANTIC AVENUE**

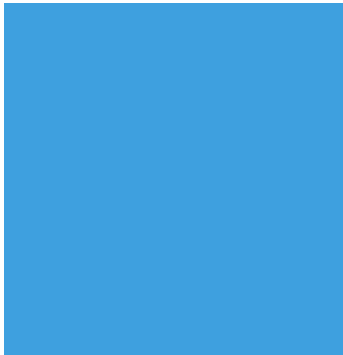
**LONG BEACH, CA**



**TABLE OF CONTENTS**

**01**

PROPERTY HIGHLIGHTS



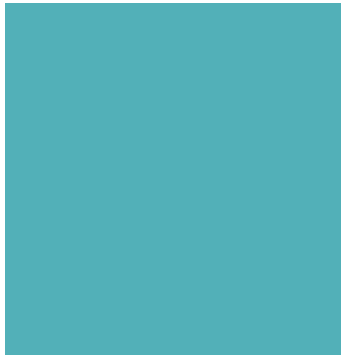
**02**

PHOTOS, AERIALS & MAPS



**03**

FLOOR PLANS, AERIAL & PARCEL MAPS



**04**

NEARBY AMENITIES





## BUILDING DESCRIPTION

<b>Address:</b>	3939 Atlantic Avenue Long Beach, CA 90807
<b>Available Size:</b>	379 - 979 SF
<b>Asking Rate:</b>	\$2.00 - \$2.50 PSF/ Modified Gross
<b>Zoning:</b>	LBCNP
<b>APN:</b>	7139-003-047
<b>Building Size:</b>	60,345 SF
<b>Year Built:</b>	1983
<b>Parking Available</b>	150 Spaces

## PROPERTY HIGHLIGHTS

3939 Atlantic Avenue is approximately 54,103 square foot multi-tenant office building on approximately 60,345 square foot lot located in the rapidly growing Bixby Knolls district of Long Beach.

The centrally located office buildings of Bixby Knolls offer an urban, pedestrian feel, with a vast assortment of complimentary retail uses and residential enclaves interspersed among the office buildings in a thriving environment.

The subject property is strategically positioned at the intersection of Atlantic and Roosevelt (28,100 average daily volume) with a solid traffic count. The nearby Long Beach Boulevard conveniently houses the Los Angeles Metro Blue Line, which connects Downtown Long Beach to Los Angeles destinations like the Staples Center and Hollywood.

**3939**  
ATLANTIC AVENUE  
LONG BEACH, CA

For more information contact:

**SHEVA HOSSEINZADEH**

CBC Blair | Principal

T: 562.400.5949 | O: 562.548.7410

BRE #01922147

sheva@cbcblair.com

**VACHEL MCKEEVER**

CBC Blair | Associate Vice President

T: 562.900.2938

BRE #02074710

vmckeeper@cbcblair.com

**COLDWELL BANKER COMMERCIAL**

**CBC Blair**

333 West Broadway, Ste. 312

Long Beach, CA 90802

Company BRE #01330395

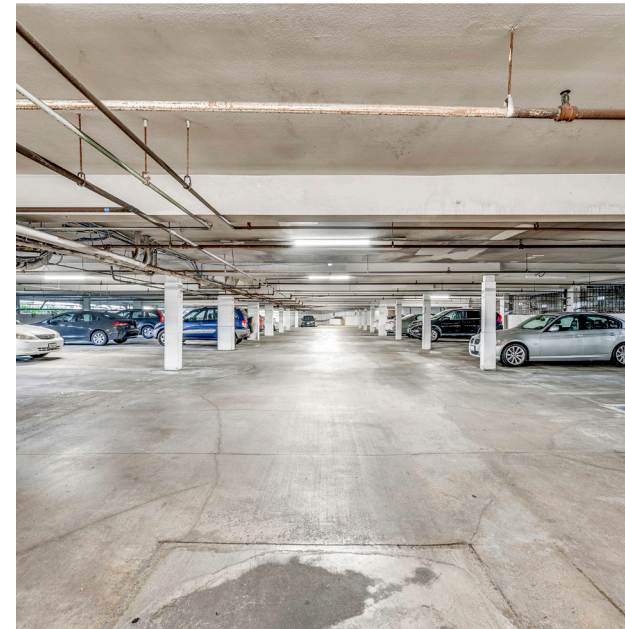
# AVAILABLE SUITES

FLOOR	SUITE	SF	RATE	TYPE	COMMENTS
1	110	979	\$2.00 PSF	Office	Open area, 3 private offices
	116	676	\$2.00 PSF	Office	Open area, Private office
2	208	708	\$2.00 PSF	Office	Waiting room, 3 Private offices
	209	379	\$2.50 PSF	Office	Open area

02

FLOOR & SITE PLANS

All measurements are approximate. While deemed reliable, no information on these floor plans should be relied upon without independent verification.



**3939**  
ATLANTIC AVENUE  
LONG BEACH, CA

For more information contact:

**SHEVA HOSSEINZADEH**

CBC Blair | Principal

T: 562.400.5949 | O: 562.548.7410

BRE #01922147

sheva@cbcblair.com

**VACHEL MCKEEVER**

CBC Blair | Associate Vice President

T: 562.900.2938

BRE #02074710

vmckeeper@cbcblair.com

**COLDWELL BANKER COMMERCIAL**

**CBC Blair**

333 West Broadway, Ste. 312

Long Beach, CA 90802

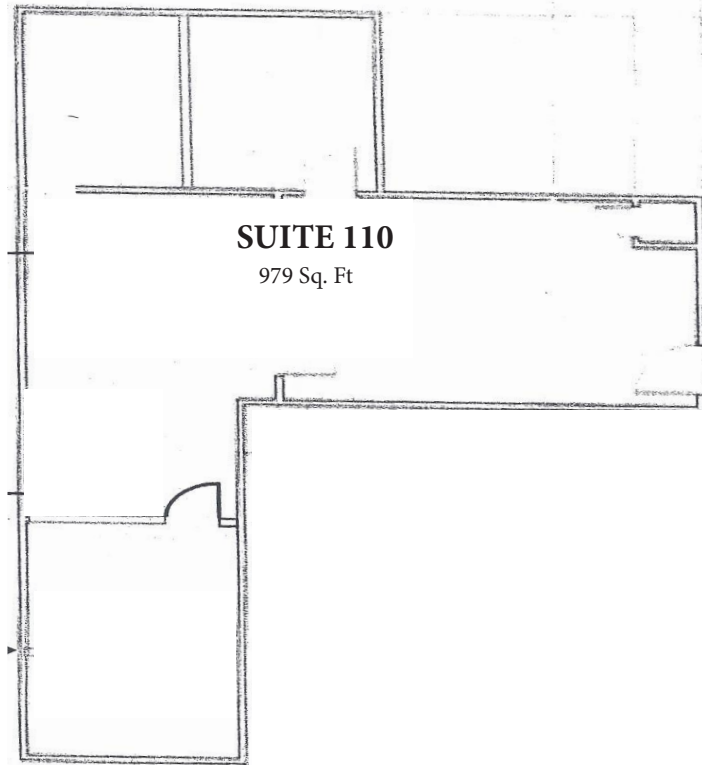
Company BRE #01330395

© 2023 Coldwell Banker Real Estate LLC, dba Coldwell Banker Commercial Affiliates. All Rights Reserved. Coldwell Banker Real Estate LLC, dba Coldwell Banker Commercial Affiliates fully supports the principles of the Equal Opportunity Act. Each Office is Independently Owned and Operated. Coldwell Banker Commercial and the Coldwell Banker Commercial Logo are registered service marks owned by Coldwell Banker Real Estate LLC, dba Coldwell Banker Commercial Affiliates. The information above is from sources we believe to be reliable. We have not verified its accuracy and make no guarantee about it. You and your tax and legal advisors should conduct your own investigation of the property and transaction.

# FIRST FLOOR PLAN

## SUITE 110

979 SF



All measurements are approximate. While deemed reliable, no information on these floor plans should be relied upon without independent verification.

For more information contact:

**SHEVA HOSSEINZADEH**

**CBC Blair | Principal**

T: 562.400.5949 | O: 562.548.7410

BRE #01922147

sheva@cbcblair.com

**VACHEL MCKEEVER**

**CBC Blair | Associate Vice President**

T: 562.900.2938

BRE #02074710

vmckeever@cbcblair.com

**COLDWELL BANKER COMMERCIAL**

**CBC Blair**

333 West Broadway, Ste. 312

Long Beach, CA 90802

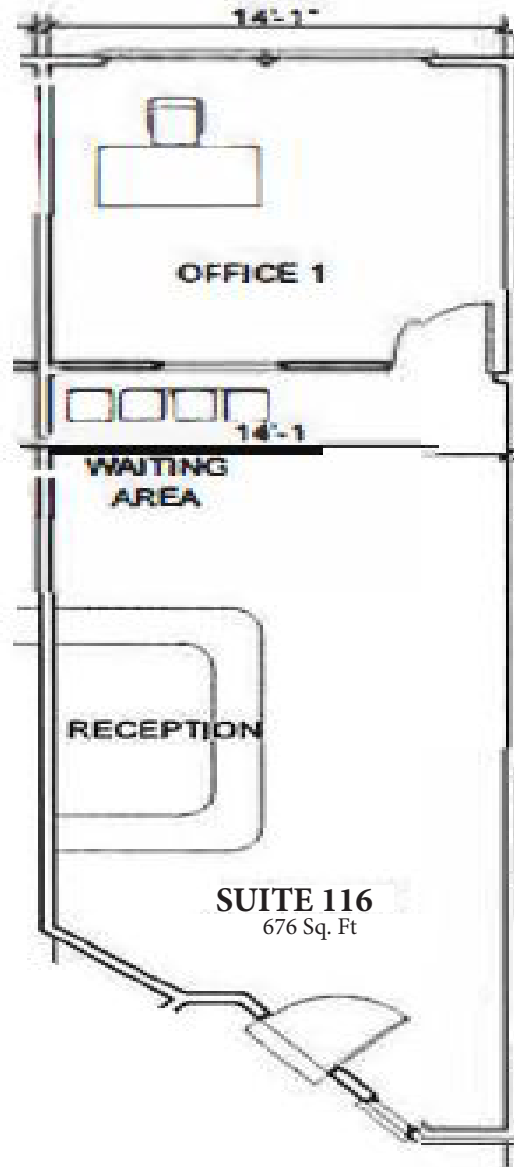
Company BRE #01330395

# FIRST FLOOR PLAN

## SUITE 116

676 SF

All measurements are approximate. While deemed reliable, no information on these floor plans should be relied upon without independent verification.



02

FLOOR & SITE PLANS

**3939**  
ATLANTIC AVENUE  
LONG BEACH, CA

For more information contact:

**SHEVA HOSSEINZADEH**

CBC Blair | Principal

T: 562.400.5949 | O: 562.548.7410

BRE #01922147

sheva@cbcblair.com

**VACHEL MCKEEVER**

CBC Blair | Associate Vice President

T: 562.900.2938

BRE #02074710

vmckeeper@cbcblair.com

**COLDWELL BANKER COMMERCIAL**

**CBC Blair**

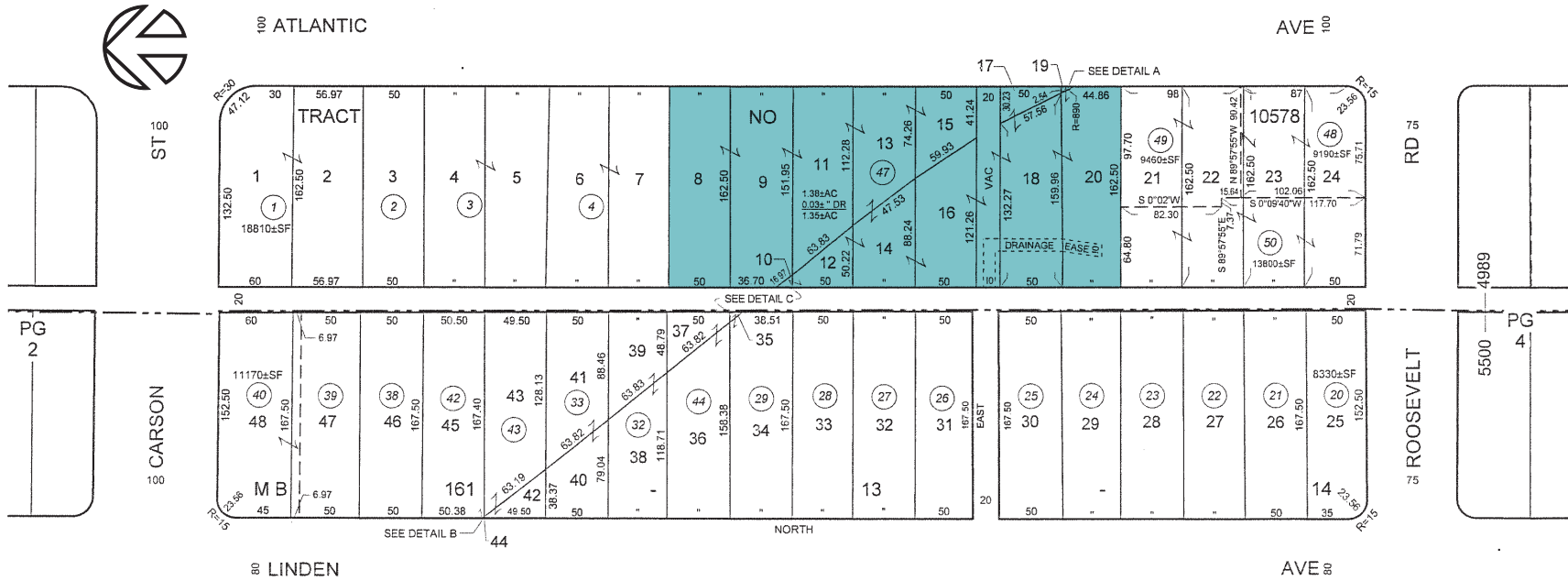
333 West Broadway, Ste. 312

Long Beach, CA 90802

Company BRE #01330395

© 2023 Coldwell Banker Real Estate LLC, dba Coldwell Banker Commercial Affiliates. All Rights Reserved. Coldwell Banker Real Estate LLC, dba Coldwell Banker Commercial Affiliates fully supports the principles of the Equal Opportunity Act. Each Office is Independently Owned and Operated. Coldwell Banker Commercial and the Coldwell Banker Commercial Logo are registered service marks owned by Coldwell Banker Real Estate LLC, dba Coldwell Banker Commercial Affiliates. The information above is from sources we believe to be reliable. We have not verified its accuracy and make no guarantee about it. You and your tax and legal advisors should conduct your own investigation of the property and transaction.

# PARCEL MAP



02

FLOOR & SITE PLANS

**3939**  
ATLANTIC AVENUE  
LONG BEACH, CA

For more information contact:  
**SHEVA HOSSEINZADEH**  
CBC Blair | Principal  
T: 562.400.5949 | O: 562.548.7410  
BRE #01922147  
sheva@cbcblair.com

**VACHEL MCKEEVER**  
CBC Blair | Associate Vice President  
T: 562.900.2938  
BRE #02074710  
vmckeeper@cbcblair.com

**COLDWELL BANKER COMMERCIAL**  
CBC Blair  
333 West Broadway, Ste. 312  
Long Beach, CA 90802  
Company BRE #01330395

© 2023 Coldwell Banker Real Estate LLC, dba Coldwell Banker Commercial Affiliates. All Rights Reserved. Coldwell Banker Real Estate LLC, dba Coldwell Banker Commercial Affiliates fully supports the principles of the Equal Opportunity Act. Each Office is Independently Owned and Operated. Coldwell Banker Commercial and the Coldwell Banker Commercial Logo are registered service marks owned by Coldwell Banker Real Estate LLC, dba Coldwell Banker Commercial Affiliates. The information above is from sources we believe to be reliable. We have not verified its accuracy and make no guarantee about it. You and your tax and legal advisors should conduct your own investigation of the property and transaction.

# INTERIOR PHOTO - SUITE 110



03

PHOTOS, AERIALS & MAPS

**3939**  
ATLANTIC AVENUE  
LONG BEACH, CA

For more information contact:

**SHEVA HOSSEINZADEH**

CBC Blair | Principal

T: 562.400.5949 | O: 562.548.7410

BRE #01922147

sheva@cbcblair.com

**VACHEL MCKEEVER**

CBC Blair | Associate Vice President

T: 562.900.2938

BRE #02074710

vmckeever@cbcblair.com

**COLDWELL BANKER COMMERCIAL**

**CBC Blair**

333 West Broadway, Ste. 312

Long Beach, CA 90802

Company BRE #01330395

© 2023 Coldwell Banker Real Estate LLC, dba Coldwell Banker Commercial Affiliates. All Rights Reserved. Coldwell Banker Real Estate LLC, dba Coldwell Banker Commercial Affiliates fully supports the principles of the Equal Opportunity Act. Each Office is Independently Owned and Operated. Coldwell Banker Commercial and the Coldwell Banker Commercial Logo are registered service marks owned by Coldwell Banker Real Estate LLC, dba Coldwell Banker Commercial Affiliates. The information above is from sources we believe to be reliable. We have not verified its accuracy and make no guarantee about it. You and your tax and legal advisors should conduct your own investigation of the property and transaction.

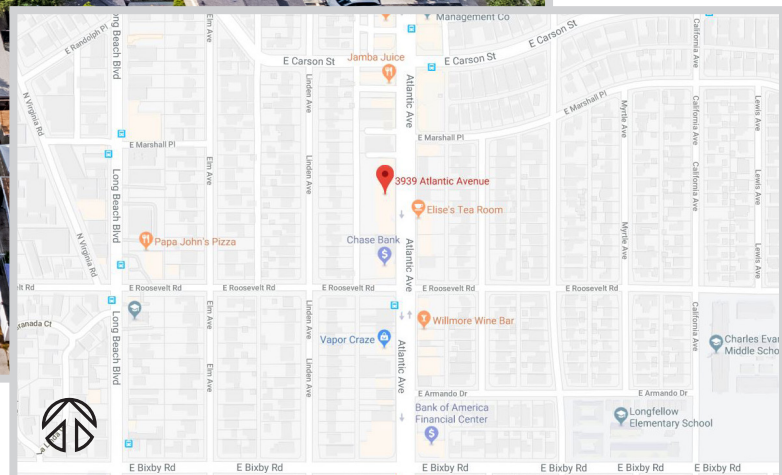




**3939**  
**ATLANTIC AVENUE**  
 LONG BEACH, CA

**Atlantic Ave.**

**Linden Ave.**



**03**

PHOTOS, AERIALS & MAPS

**3939**  
**ATLANTIC AVENUE**  
 LONG BEACH, CA

For more information contact:  
**SHEVA HOSSEINZADEH**  
 CBC Blair | Principal  
 T: 562.400.5949 | O: 562.548.7410  
 BRE #01922147  
 sheva@cbcblair.com

**VACHEL MCKEEVER**  
 CBC Blair | Associate Vice President  
 T: 562.900.2938  
 BRE #02074710  
 vmckeeper@cbcblair.com

**COLDWELL BANKER COMMERCIAL**  
**CBC Blair**  
 333 West Broadway, Ste. 312  
 Long Beach, CA 90802  
 Company BRE #01330395

© 2023 Coldwell Banker Real Estate LLC, dba Coldwell Banker Commercial Affiliates. All Rights Reserved. Coldwell Banker Real Estate LLC, dba Coldwell Banker Commercial Affiliates fully supports the principles of the Equal Opportunity Act. Each Office is Independently Owned and Operated. Coldwell Banker Commercial and the Coldwell Banker Commercial Logo are registered service marks owned by Coldwell Banker Real Estate LLC, dba Coldwell Banker Commercial Affiliates. The information above is from sources we believe to be reliable. We have not verified its accuracy and make no guarantee about it. You and your tax and legal advisors should conduct your own investigation of the property and transaction.



**3939**  
ATLANTIC AVENUE  
LONG BEACH, CA

For more information contact:

**SHEVA HOSSEINZADEH**

CBC Blair | Principal

T: 562.400.5949 | O: 562.548.7410

BRE #01922147

sheva@cbclair.com

**VACHEL MCKEEVER**

CBC Blair | Associate Vice President

T: 562.900.2938

BRE #02074710

vmckeeper@cbclair.com

**COLDWELL BANKER COMMERCIAL**

CBC Blair

333 West Broadway, Ste. 312

Long Beach, CA 90802

Company BRE #01330395