



## 354 W Meadow Road

Eden, North Carolina 27288

### Property Highlights

- Separate, Private Dining and Event Rm with Private Bar (637 SF)
- Five (5) Craft Brew Systems / No Brewmaster Required
- Wood-Fired Pizza Oven, Internal Hood, and Full Kitchen
- 25-Gallon Grease Trap
- Four HVAC Systems (Four Years Old)
- Nice Enclosed Courtyard in Back for Outdoor Games and Live Entertainment
- Restaurant, Brewery & Grounds Fully Fenced/Enclosed
- Adjacent Acreage for Future Use or Parking
- Ample Parking
- +/- 4,111 Square Feet +/- 1,532 SF Outdoor Trex-Style Deck Seating & Entertainment Area
- +/- 3-minute drive to Nestle Purina Pet Care (Eden, NC); \$450 MM investment for a 1.3 million sf facility providing 300 initial jobs
- +/- 12-minute drive to SOVA/Berry Hill Megasite (Danville, Va); 3,528 acre site bringing thousands of jobs to the area when complete



### For more information



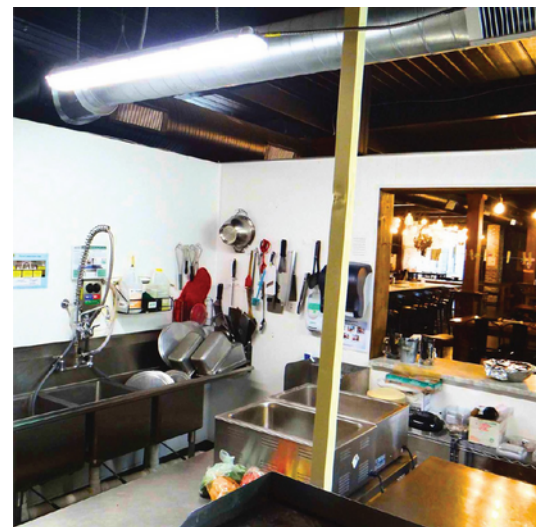
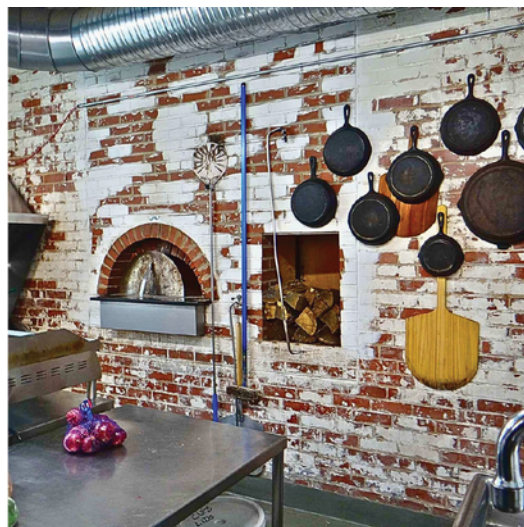
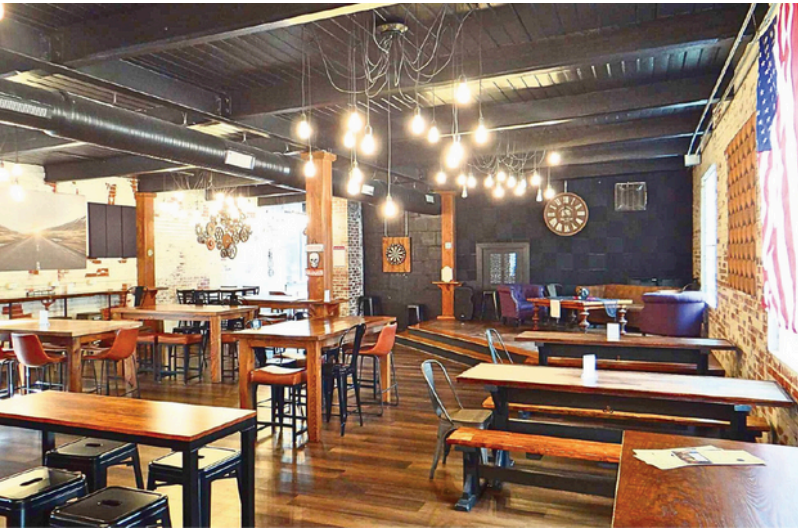
**Jason Horton**  
C: 336.300.0887  
jhorton@naipt.com



**Will Blackwell, SIOR**  
C: 336.345.1500  
wblackwell@naipt.com

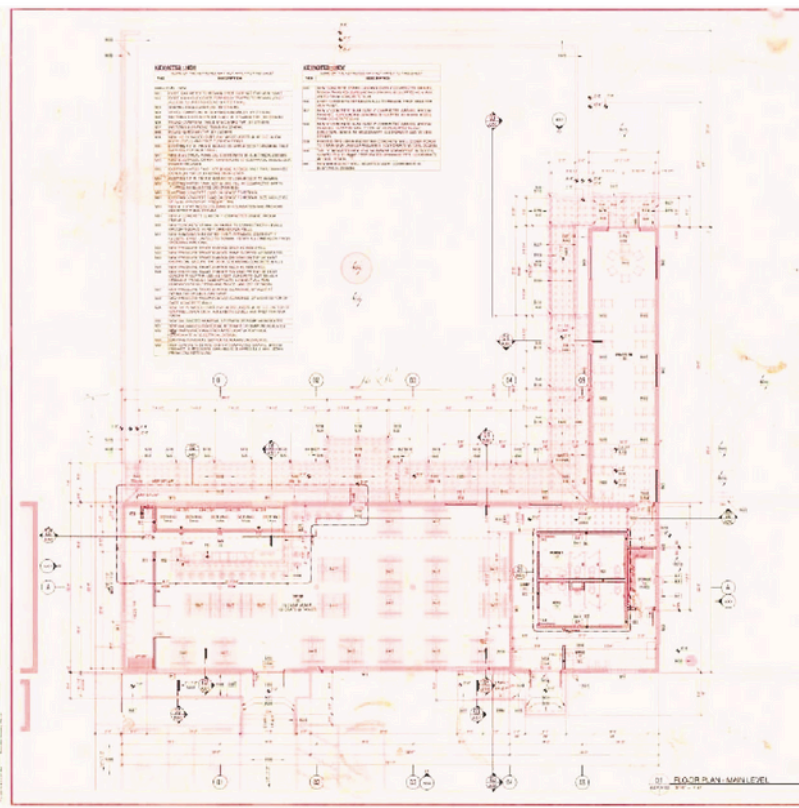


**Elijah Knight**  
C: 336.618.3562  
eknight@naipt.com



We obtained the information above from sources we believe to be reliable. However, we have not verified its accuracy and make no guarantee, warranty or representation about it. It is submitted subject to the possibility of errors, omissions, change of price, rental or other conditions, prior sale, lease or financing, or withdrawal without notice. We include projections, opinions, assumptions or estimates for example only, and they may not represent current or future performance of the property. You and your tax and legal advisors should conduct your own investigation of the property and transaction.

250 W. First St.  
Winston Salem, NC 27101  
Phone: 336.901.3420 tel  
naipt.com



We obtained the information above from sources we believe to be reliable. However, we have not verified its accuracy and make no guarantee, warranty or representation about it. It is submitted subject to the possibility of errors, omissions, change of price, rental or other conditions, prior sale, lease or financing, or withdrawal without notice. We include projections, opinions, assumptions or estimates for example only, and they may not represent current or future performance of the property. You and your tax and legal advisors should conduct your own investigation of the property and transaction.

250 W. First St.  
Winston Salem, NC 27101  
Phone: 336.901.3420 tel  
naipt.com

