

11610 FULTON STREET E
LOWELL, MICHIGAN

OFFICE FOR SALE
7,966 Square Feet Available



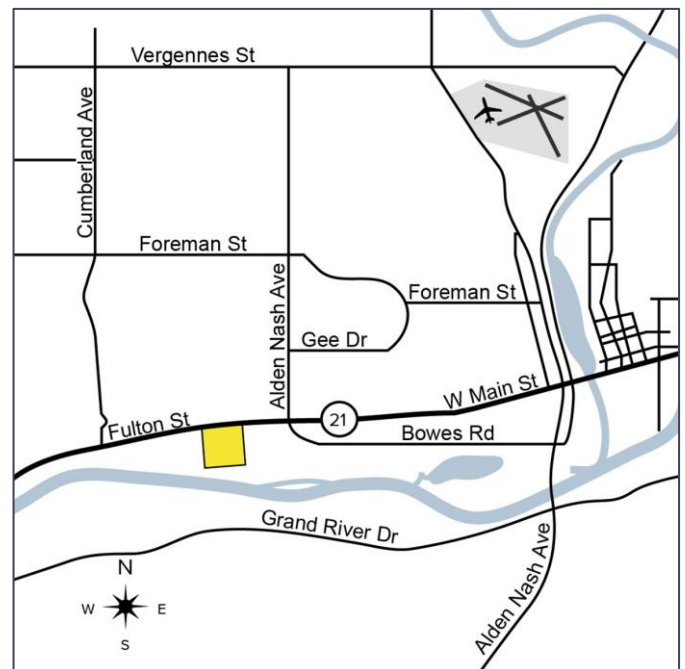
**SIGNATURE
ASSOCIATES**
KNOW SIGNATURE | KNOW RESULTS

CURRENT PET CARE CENTER



PROPERTY FEATURES

- 7,966 total building square feet
- Located on 1.04 acres
- Ample parking
- Zoned COMM
- 12' ceilings
- Built in 1984
- Great for a variety of uses including gas station, restaurant, redevelopment, retail and a variety of office/medical users
- Sale Price: \$975,000 (\$122.40/sf)



For more information, please contact:

JOE RIZQALLAH
(616) 822 6310
jrizqallah@signatureassociates.com

CAROLYN BOJI
(616) 213 4560
cboji@signatureassociates.com

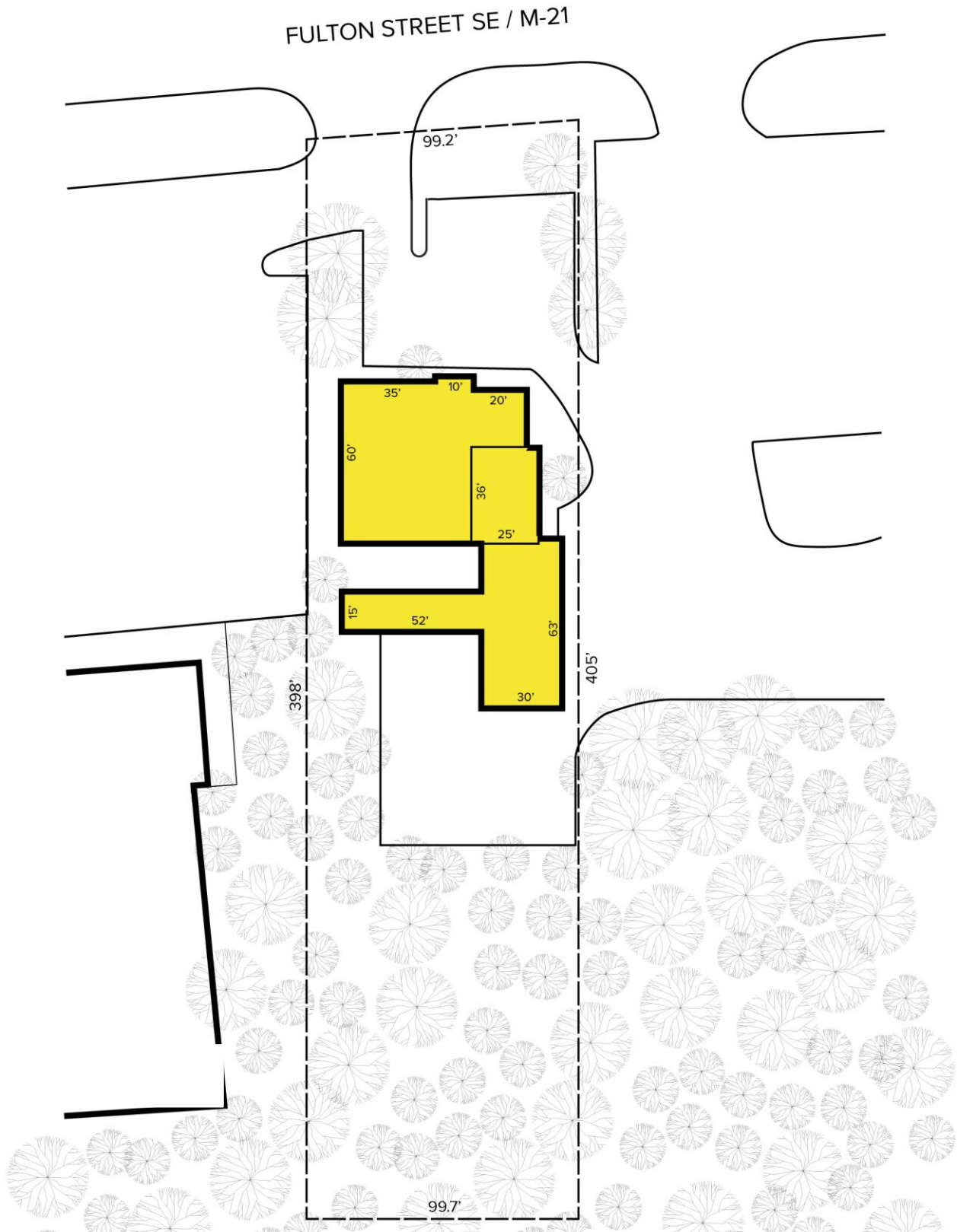
SIGNATURE ASSOCIATES
1188 East Paris Ave SE, Suite 220
Grand Rapids, MI 49546
www.signatureassociates.com

11610 Fulton Street SE – Lowell, Michigan

Office For Sale

7,966
Square Feet
AVAILABLE

Site Plan



For more information, please contact:

JOE RIZQALLAH

(616) 822 6310

jrizzqallah@signatureassociates.com

CAROLYN BOJI

(616) 213 4560

cboji@signatureassociates.com

SIGNATURE ASSOCIATES

1188 East Paris Ave SE, Suite 220

Grand Rapids, MI 49546

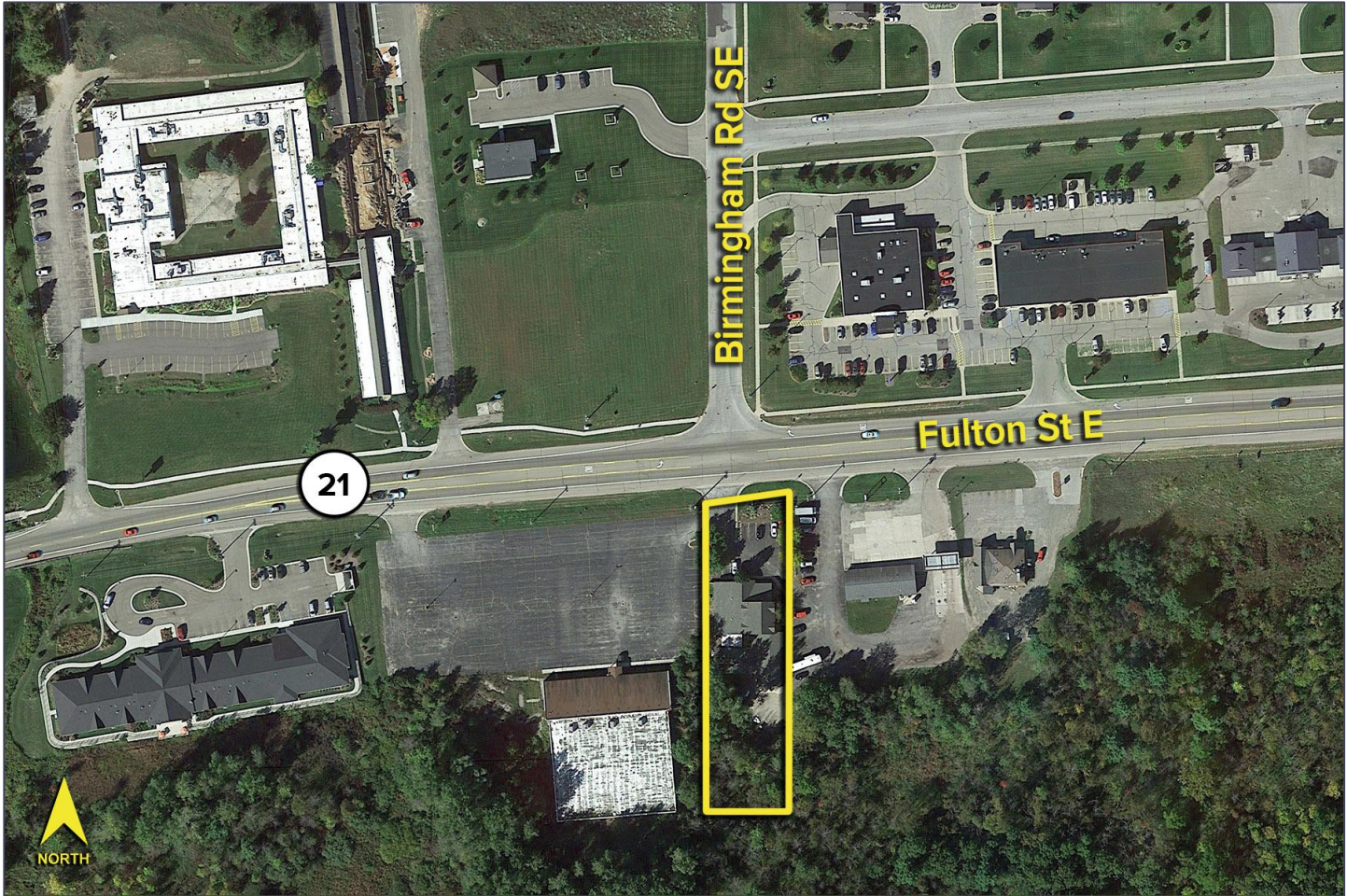
www.signatureassociates.com

11610 Fulton Street SE – Lowell, Michigan

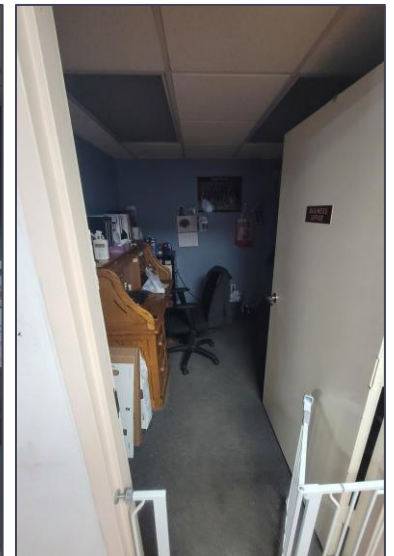
Office For Sale

7,966
Square Feet
AVAILABLE

Aerial



Interior Photos



For more information, please contact:

JOE RIZQALLAH
(616) 822 6310
jrizqallah@signatureassociates.com

CAROLYN BOJI
(616) 213 4560
cboji@signatureassociates.com

SIGNATURE ASSOCIATES
1188 East Paris Ave SE, Suite 220
Grand Rapids, MI 49546
www.signatureassociates.com

11610 Fulton Street SE – Lowell, Michigan

Office For Sale

7,966
Square Feet
AVAILABLE

Interior Photos



For more information, please contact:

JOE RIZQALLAH
(616) 822 6310
jrizzqallah@signatureassociates.com

CAROLYN BOJI
(616) 213 4560
cboji@signatureassociates.com

SIGNATURE ASSOCIATES
1188 East Paris Ave SE, Suite 220
Grand Rapids, MI 49546
www.signatureassociates.com