

CORONA CORPORATE CENTRE



2083 COMPTON AVENUE, UNIT 104, CORONA, CA 92881

MEDICAL OFFICE UNIT FOR SALE

 **LEE &
ASSOCIATES**
COMMERCIAL REAL ESTATE SERVICES

PROPERTY FEATURES



UNIT 104 : \pm 3,262 SF MEDICAL OFFICE FOR SALE

- Turnkey Class A Medical Office Condo
- Oversized Reception, 4 Exam Rooms, 3 Private Offices, 1 Procedure Room, Breakroom/Conference Room
- Minutes from Corona Regional Medical Center, Retail, and Dining
- Building Signage Available
- Direct Access to the 15 Freeway
- Adjacent to Numerous Retail Amenities
- Excellent Freeway Access
- **Sale Price \$1,614,690 (\$495 PSF)**



CLICK HERE FOR VIDEO

Contact Brokers: **ANDREW PEAKE**, Senior Vice President/Managing Partner, 951.276.3644, apeake@leeriverside.com, DRE #01398894
MASON WILSON, Associate, 951.276.3603, mwilson@leeriverside.com, DRE #02163918

Lee & Associates Commercial Real Estate Services, Inc. - Riverside | 4193 Flat Rock Drive, Suite 100, Riverside, CA 92505 | Corporate DRE #01048055

All information furnished regarding property for sale, rental or financing is from sources deemed reliable, but no warranty or representation is made to the accuracy thereof and same is submitted to errors, omissions, change of price, rental or other conditions prior to sale, lease or financing or withdrawal without notice. No liability of any kind is to be imposed on the broker herein.

LEE & ASSOCIATES
COMMERCIAL REAL ESTATE SERVICES

INTERIOR PHOTOS

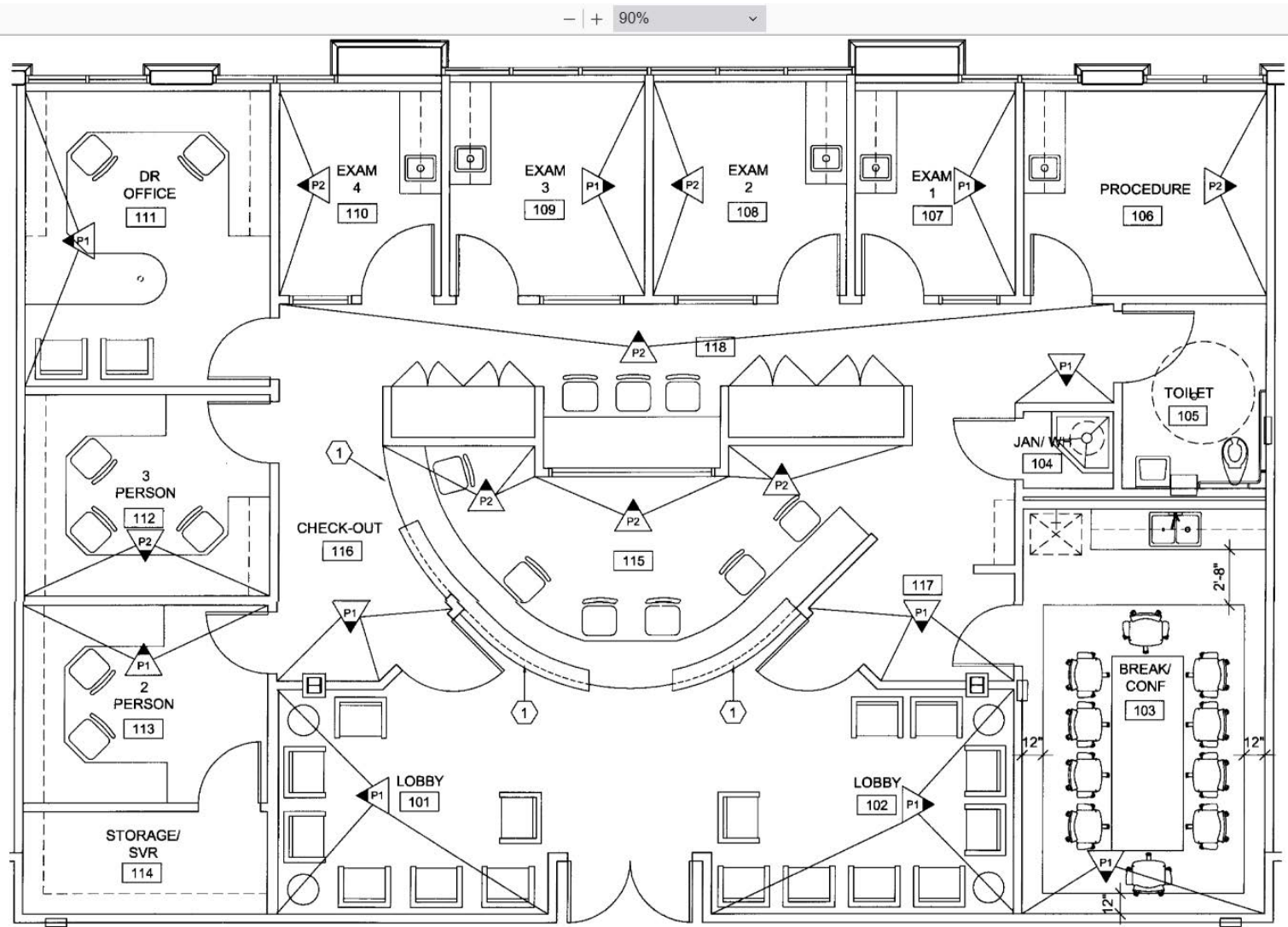


Contact Brokers: **ANDREW PEAKE**, Senior Vice President/Managing Partner, 951.276.3644, apeake@leeriverside.com, DRE #01398894
MASON WILSON, Associate, 951.276.3603, mwilson@leeriverside.com, DRE #02163918

Lee & Associates Commercial Real Estate Services, Inc. - Riverside | 4193 Flat Rock Drive, Suite 100, Riverside, CA 92505 | Corporate DRE #01048055
All information furnished regarding property for sale, rental or financing is from sources deemed reliable, but no warranty or representation is made to the accuracy thereof and same is submitted to errors, omissions, change of price, rental or other conditions prior to sale, lease or financing or withdrawal without notice. No liability of any kind is to be imposed on the broker herein.

LEE & ASSOCIATES
COMMERCIAL REAL ESTATE SERVICES

FLOOR PLAN

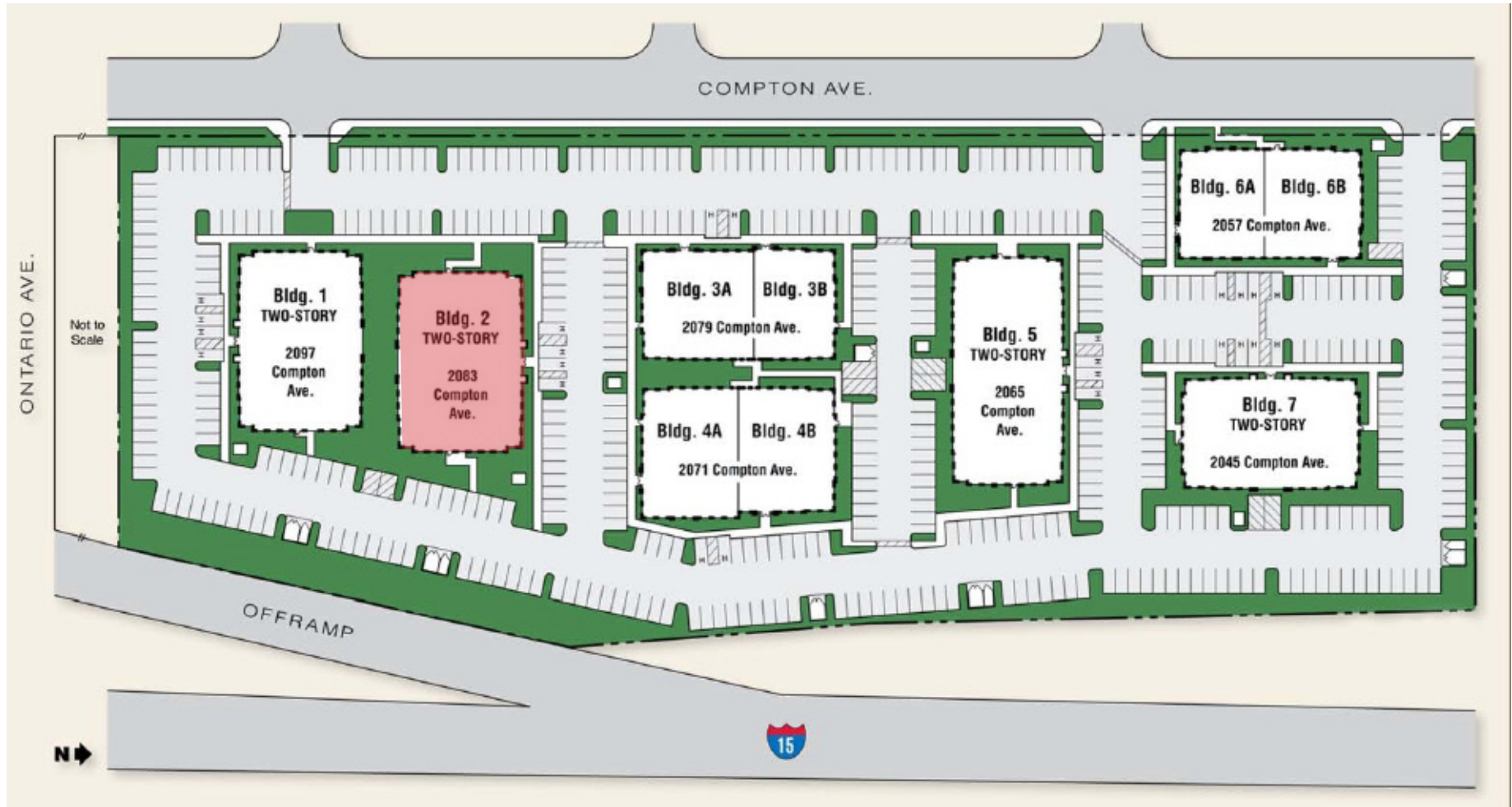


Contact Brokers: **ANDREW PEAKE**, Senior Vice President/Managing Partner, 951.276.3644, apeake@leeriverside.com, DRE #01398894
MASON WILSON, Associate, 951.276.3603, mwilson@leeriverside.com, DRE #02163918



Lee & Associates Commercial Real Estate Services, Inc. - Riverside | 4193 Flat Rock Drive, Suite 100, Riverside, CA 92505 | Corporate DRE #01048055
All information furnished regarding property for sale, rental or financing is from sources deemed reliable, but no warranty or representation is made to the accuracy thereof and same is submitted to errors, omissions, change of price, rental or other conditions prior to sale, lease or financing or withdrawal without notice. No liability of any kind is to be imposed on the broker herein.

SITE PLAN

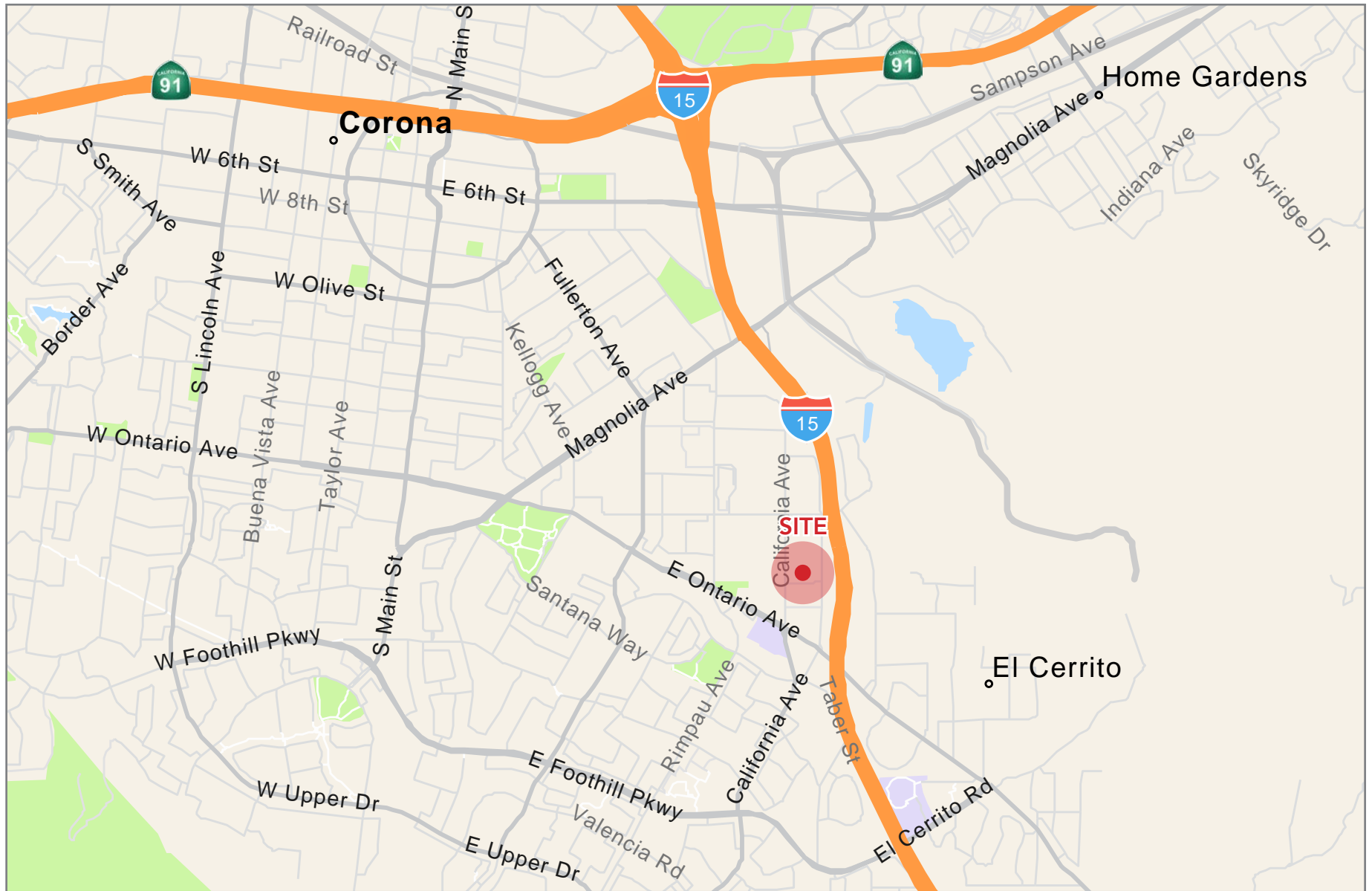


Contact Brokers: **ANDREW PEAKE**, Senior Vice President/Managing Partner, 951.276.3644, apeake@leeriverside.com, DRE #01398894
MASON WILSON, Associate, 951.276.3603, mwilson@leeriverside.com, DRE #02163918

Lee & Associates Commercial Real Estate Services, Inc. - Riverside | 4193 Flat Rock Drive, Suite 100, Riverside, CA 92505 | Corporate DRE #01048055

All information furnished regarding property for sale, rental or financing is from sources deemed reliable, but no warranty or representation is made to the accuracy thereof and same is submitted to errors, omissions, change of price, rental or other conditions prior to sale, lease or financing or withdrawal without notice. No liability of any kind is to be imposed on the broker herein.

LOCATION



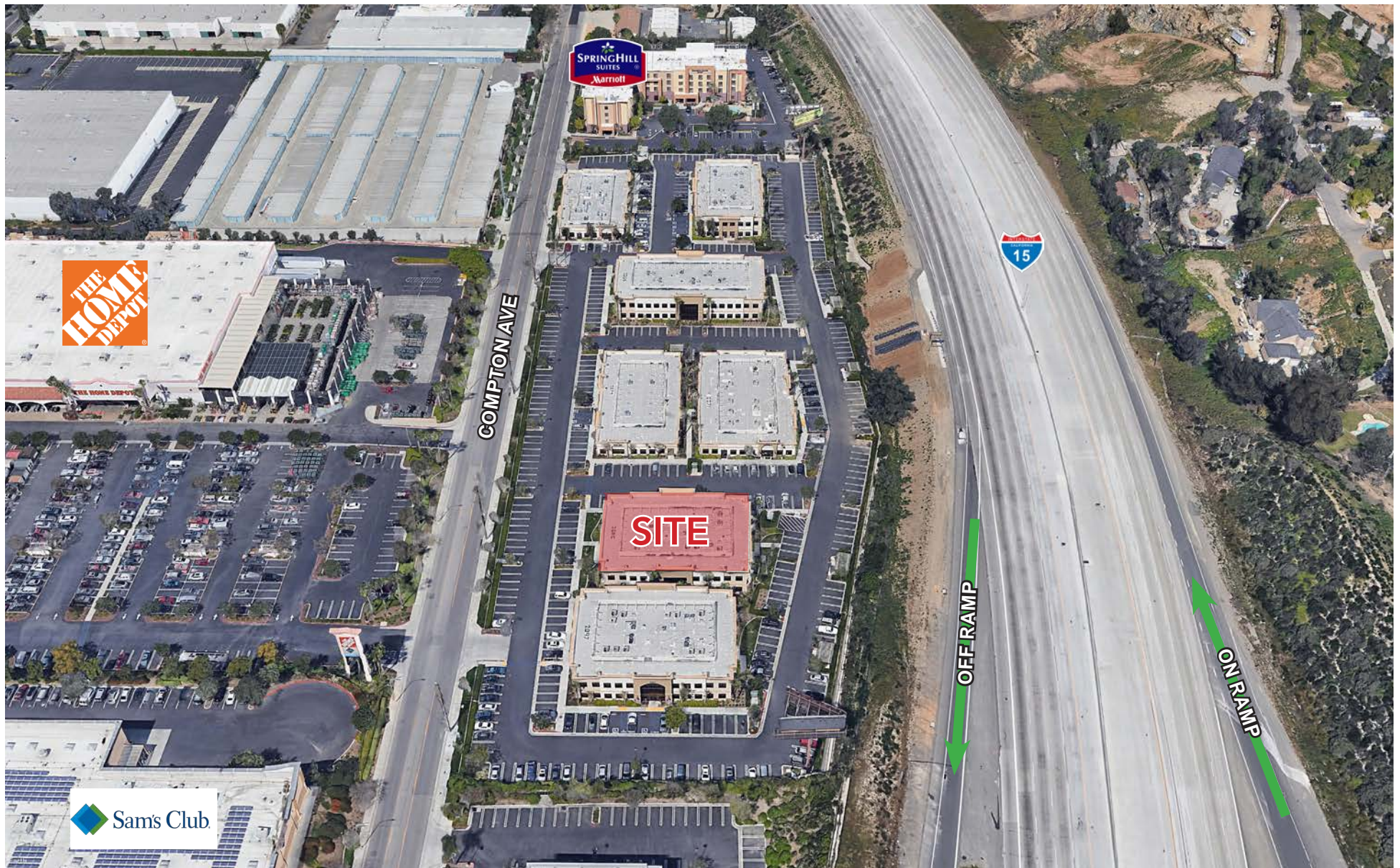
Contact Brokers: **ANDREW PEAKE**, Senior Vice President/Managing Partner, 951.276.3644, apeake@leeriverside.com, DRE #01398894
MASON WILSON, Associate, 951.276.3603, mwilson@leeriverside.com, DRE #02163918

Lee & Associates Commercial Real Estate Services, Inc. - Riverside | 4193 Flat Rock Drive, Suite 100, Riverside, CA 92505 | Corporate DRE #01048055

All information furnished regarding property for sale, rental or financing is from sources deemed reliable, but no warranty or representation is made to the accuracy thereof and same is submitted to errors, omissions, change of price, rental or other conditions prior to sale, lease or financing or withdrawal without notice. No liability of any kind is to be imposed on the broker herein.

LEE & ASSOCIATES
COMMERCIAL REAL ESTATE SERVICES

LOCATION



Contact Brokers: **ANDREW PEAKE**, Senior Vice President/Managing Partner, 951.276.3644, apeake@leeriverside.com, DRE #01398894
MASON WILSON, Associate, 951.276.3603, mwilson@leeriverside.com, DRE #02163918

Lee & Associates Commercial Real Estate Services, Inc. - Riverside | 4193 Flat Rock Drive, Suite 100, Riverside, CA 92505 | Corporate DRE #01048055
All information furnished regarding property for sale, rental or financing is from sources deemed reliable, but no warranty or representation is made to the accuracy thereof and same is submitted to errors, omissions, change of price, rental or other conditions prior to sale, lease or financing or withdrawal without notice. No liability of any kind is to be imposed on the broker herein.

LEE & ASSOCIATES
COMMERCIAL REAL ESTATE SERVICES