



INDUSTRIAL FOR LEASE

Secure Corner Yard in the Heart of Campbell Industrial Park

Contact Information:

Michael Gomes (S)

Lic#: RS-82817
808 285 9502
michael.gomes@colliers.com

Scott L. Mitchell (B), SIOR

Lic# RB-15492
M 808 223 1564
scott.mitchell@colliers.com



220 S. King Street, Suite 1800
Honolulu, Hawaii 96813
808 524 2666
colliers.com

91-181 Hanua St, Kapolei, HI

Property Description:

Located at the corner of Hanua and Komohana Streets, this 16,132 square foot paved and fenced yard offers a rare opportunity in the heart of Kapolei's industrial corridor. The site provides excellent visibility, easy truck access, and proximity to Kalaeloa Harbor and H-1 Freeway, making it an ideal base for contractors, equipment storage, logistics users, or service operators.

The property is fully improved with asphalt paving, perimeter fencing, and a gated entry, supporting efficient operations and secure storage. Its corner location and strong frontage deliver both functionality and exposure in one of Oahu's tightest industrial markets.

Features & Benefits:

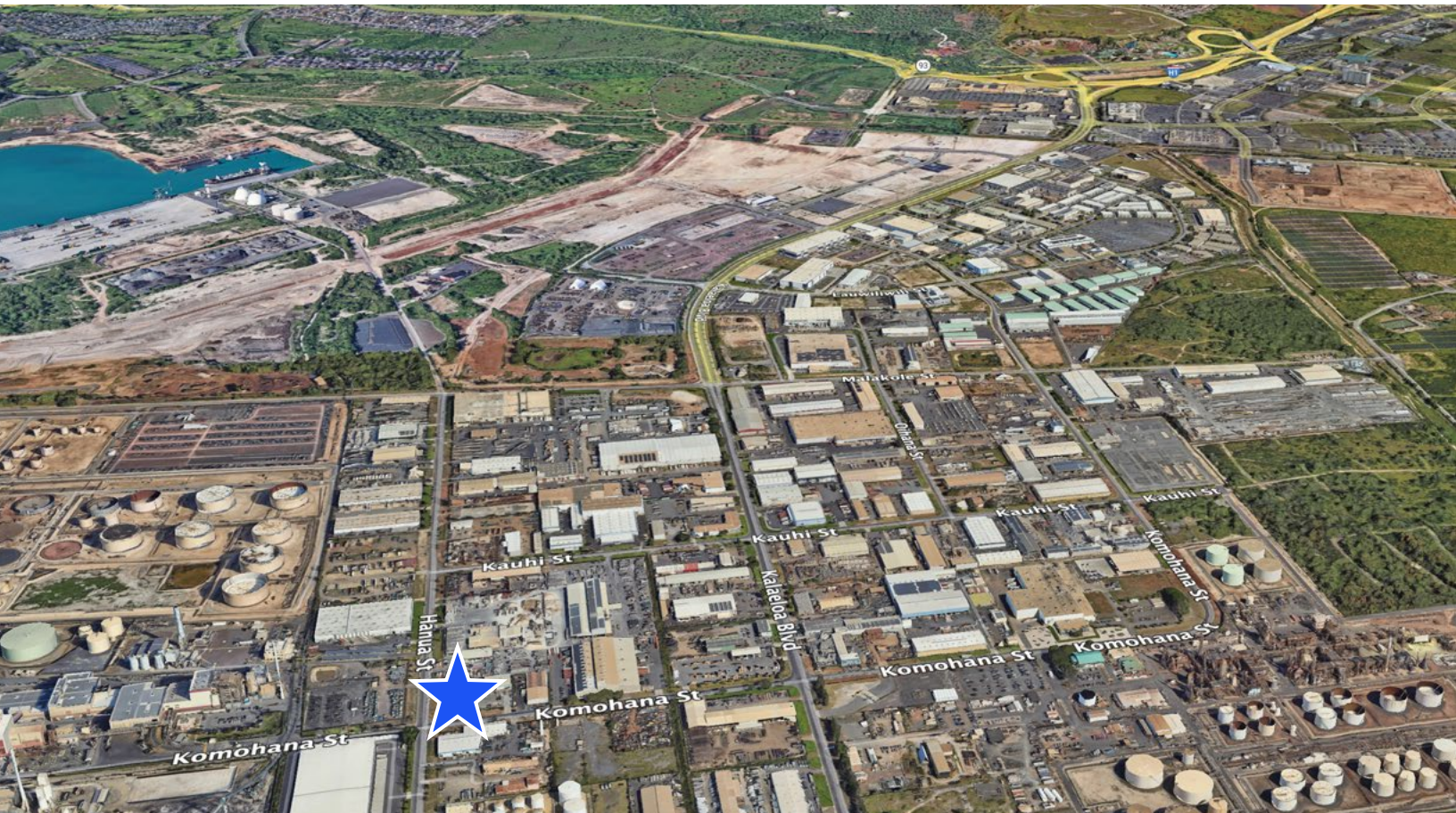
- Prime corner location at Hanua and Komohana Streets
- Fully paved and fenced yard with gated access
- Excellent visibility and truck access
- Minutes to Kalaeloa Harbor and H-1 Freeway
- Ideal for contractors, logistics, or equipment storage
- Located within Kapolei's premier industrial zone

Colliers makes no guarantees, representations or warranties of any kind, expressed or implied, regarding the information including, but not limited to, warranties of content, accuracy and reliability. Any interested party should undertake their own inquiries as to the accuracy of the information. Colliers excludes unequivocally all inferred or implied terms, conditions and warranties arising out of this document and excludes all liability for loss and damages arising there from. This publication is the copyrighted property of Colliers and/or its licensor(s). © 2025. All rights reserved. This communication is not intended to cause or induce breach of an existing listing agreement.

For Lease

Property Highlights

Area:	Kapolei
TMK:	(1) 9-1-32-2
Address:	91-181 Hanua St, Kapolei, HI
Zoning:	I-2
Available Space:	16,132 SF Lot (Available with 30 days notice)
Base Rent:	\$0.50 PSF/Month
Operating Expenses:	\$0.09 PSF/Mo. (Estimated)
Term:	3 - 5 Years



Michael Gomes (S)
Lic#: RS-82817
808 285 9502
michael.gomes@colliers.com

Scott L. Mitchell (B), SIOR
Lic# RB-15492
M 808 223 1564
scott.mitchell@colliers.com

