

FORMER AMERICAN FREIGHT

28300 SCHOOLCRAFT, LIVONIA MI 48150

24,000 SF AVAILABLE

FOR LEASE



BRAD KORN

248.985.8509
bkorn@keystonecres.com

NORMAN ABRO

248.406.7117
nabro@keystonecres.com



ABSOLUTE NNN

28300 SCHOOLCRAFT RD, LIVONIA, MI 48150

PROPERTY SUMMARY



PROPERTY DESCRIPTION

Introducing an exceptional leasing opportunity at 28300 Schoolcraft Rd, Livonia, MI 48150. This prime property features a spacious 24,000 sq ft space ideal for office use, including a 2,700 square foot showroom and 1,800 square feet of unfinished office space. With the added convenience of an exterior truckwell and situated on a generous 2.598-acre site, this property offers strategic I-96 freeway frontage, ensuring exceptional visibility and accessibility. Starting at just 9.75 per square foot, this property provides a versatile canvas for creating a modern and functional business environment.

OFFERING SUMMARY

Lease Rate:	\$9.75 SF/yr (NNN)
Available SF:	24,000 SF
Lot Size:	108,863 SF
Building Size:	24,000 SF

BRAD KORN

248.985.8509

bkorn@keystonecres.com

NORMAN ABRO

248.406.7117

nabro@keystonecres.com



ABSOLUTE NNN

28300 SCHOOLCRAFT RD, LIVONIA, MI 48150

ADDITIONAL PHOTOS



BRAD KORN

248.985.8509

bkorn@keystonecres.com

NORMAN ABRO

248.406.7117

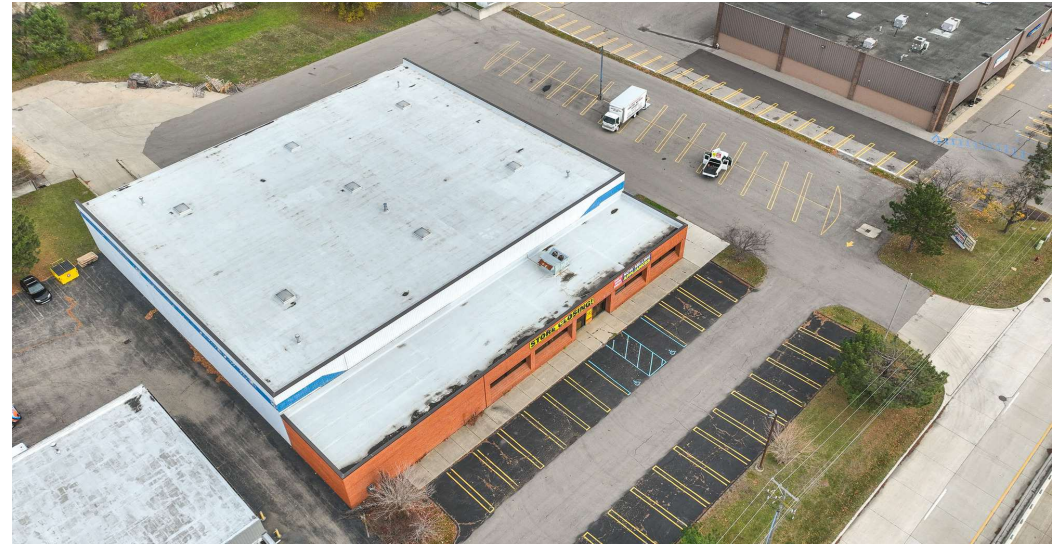
nabro@keystonecres.com



ABSOLUTE NNN

28300 SCHOOLCRAFT RD, LIVONIA, MI 48150

ADDITIONAL PHOTOS



BRAD KORN

248.985.8509

bkorn@keystonecres.com

NORMAN ABRO

248.406.7117

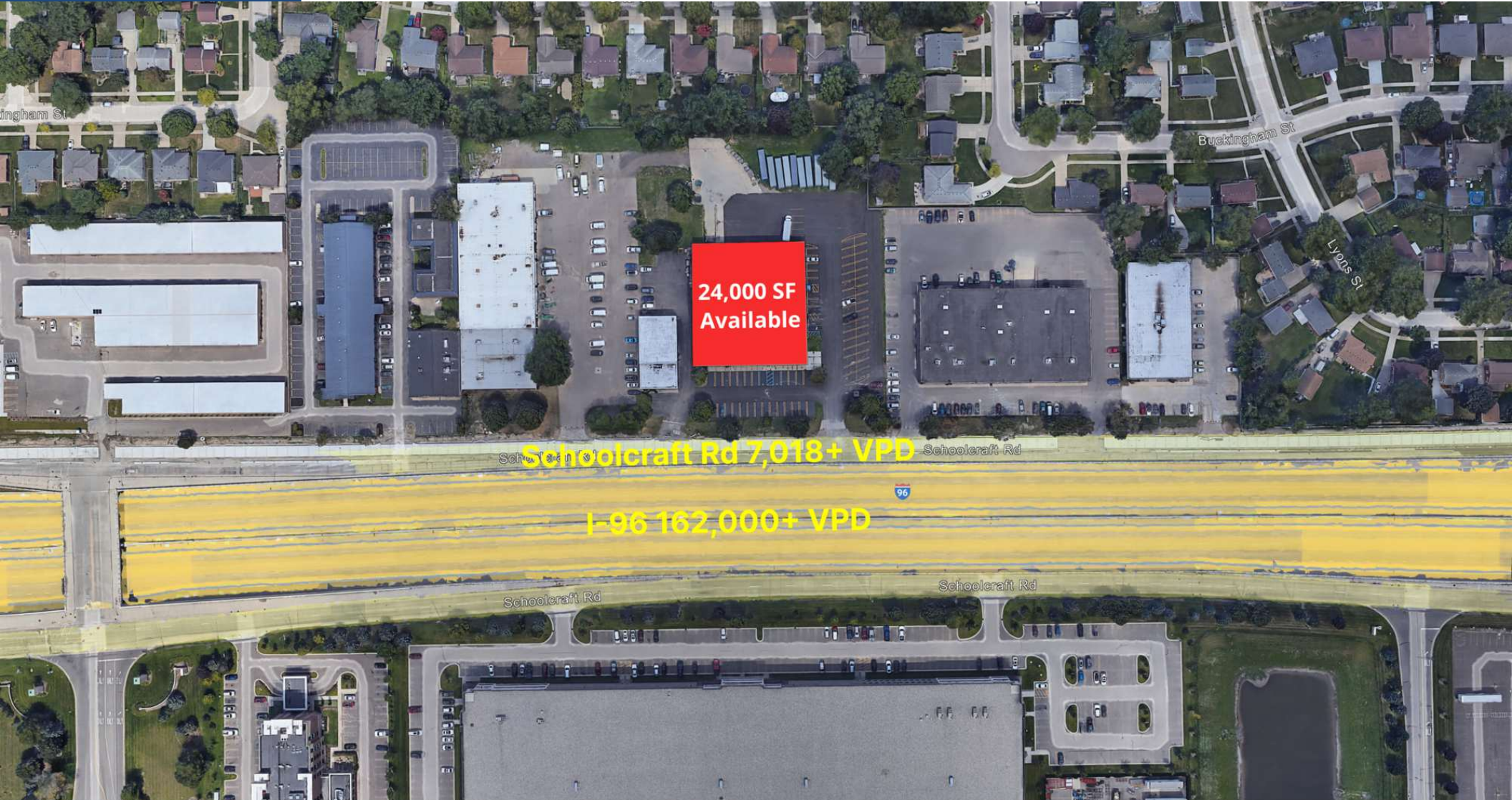
nabro@keystonecres.com



ABSOLUTE NNN

28300 SCHOOLCRAFT RD, LIVONIA, MI 48150

SITE PLAN



BRAD KORN

248.985.8509

bkorn@keystonecres.com

NORMAN ABRO

248.406.7117

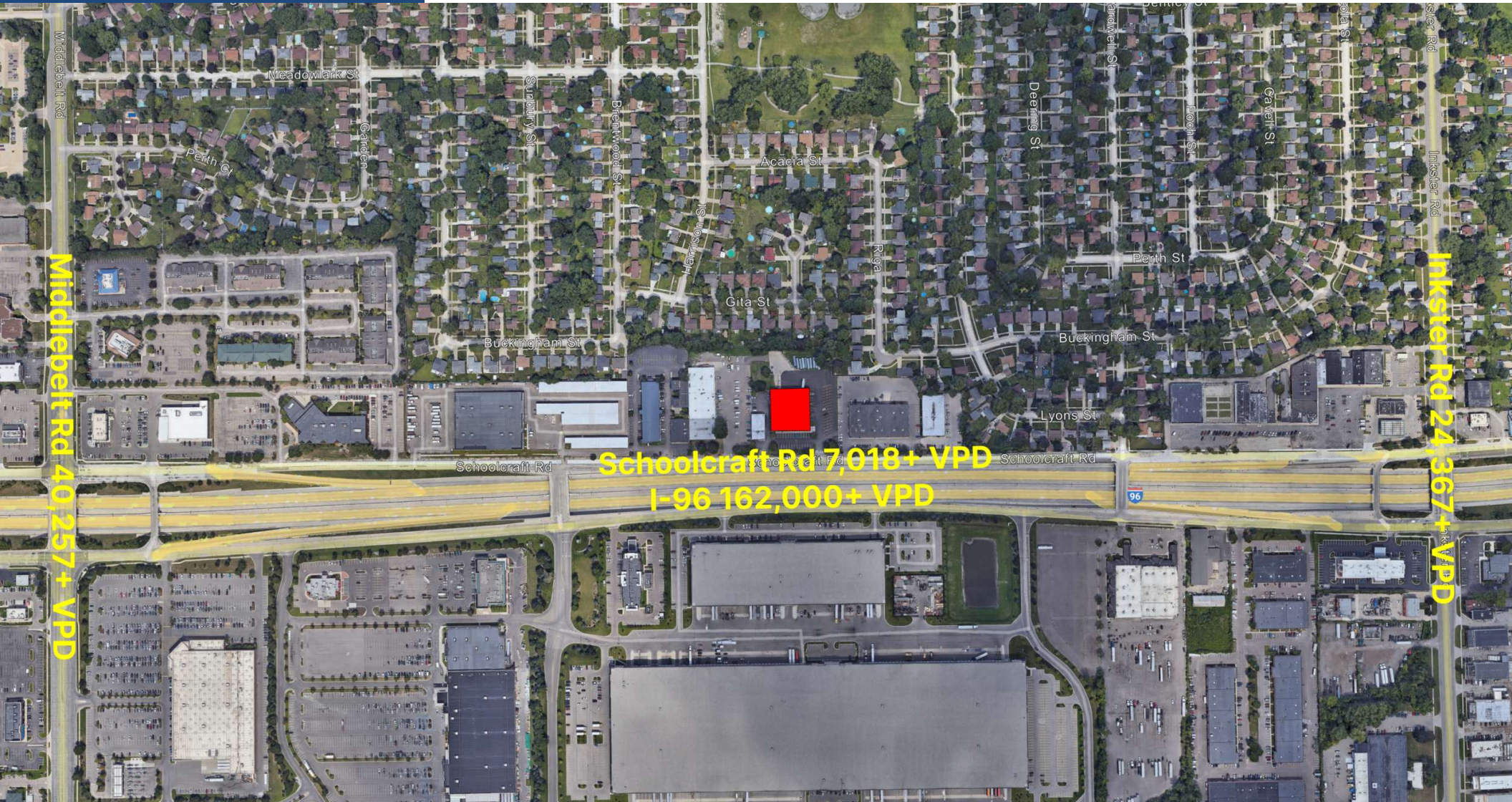
nabro@keystonecres.com



ABSOLUTE NNN

28300 SCHOOLCRAFT RD, LIVONIA, MI 48150

SITE PLAN - WIDE



BRAD KORN

248.985.8509

bkorn@keystonecres.com

NORMAN ABRO

248.406.7117

nabro@keystonecres.com



ABSOLUTE NNN

28300 SCHOOLCRAFT RD, LIVONIA, MI 48150

TRADE AERIAL



Map data ©2024 Imagery ©2024 Airbus, CNES / Airbus, Landsat / Copernicus, Maxar Technologies

BRAD KORN

248.985.8509

bkorn@keystonecres.com

NORMAN ABRO

248.406.7117

nabro@keystonecres.com



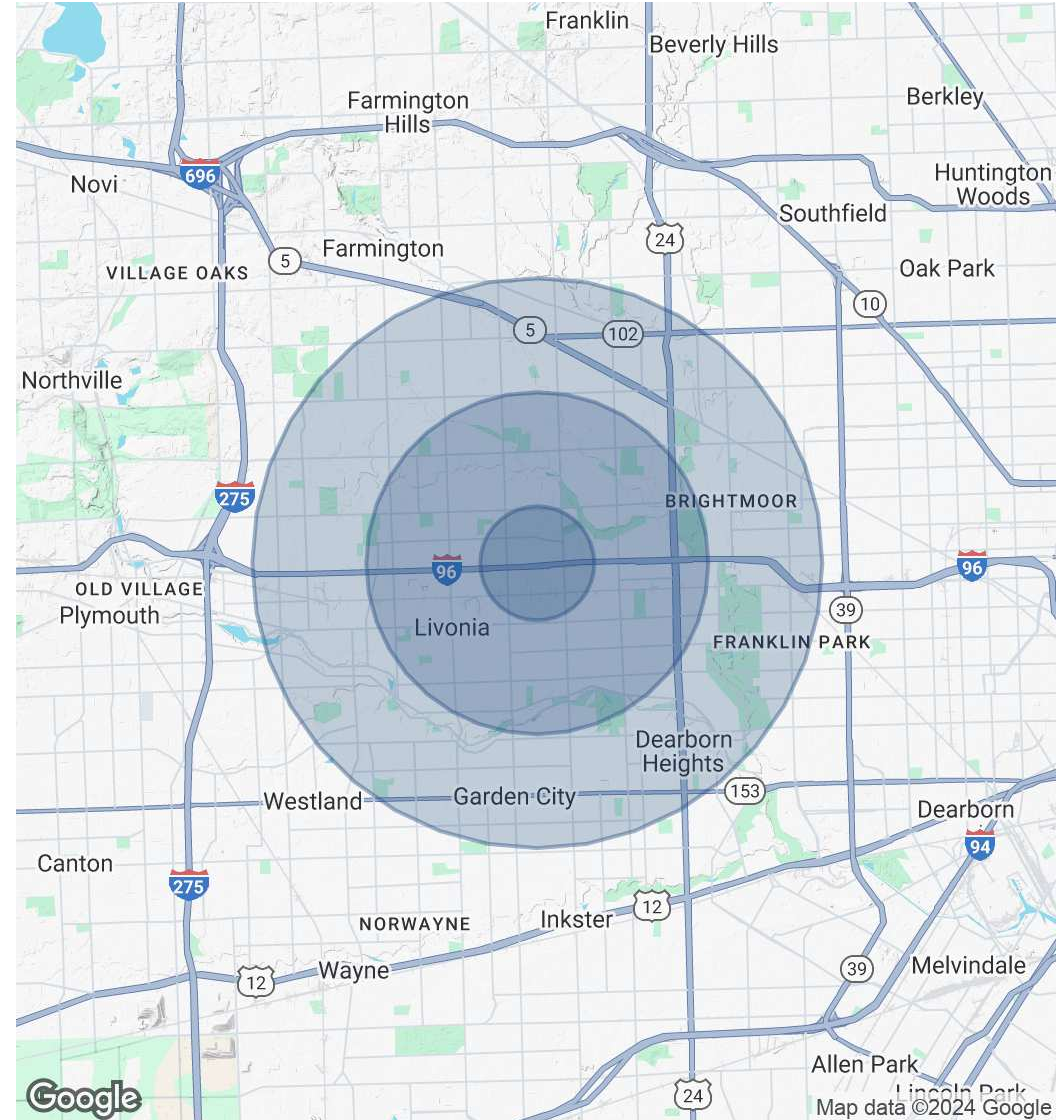
ABSOLUTE NNN

28300 SCHOOLCRAFT RD, LIVONIA, MI 48150

DEMOGRAPHICS

POPULATION	1 MILE	3 MILES	5 MILES
Total Population	9,030	95,627	275,561
Average Age	43	42	41
Average Age (Male)	41	40	40
Average Age (Female)	45	43	42
HOUSEHOLDS & INCOME	1 MILE	3 MILES	5 MILES
Total Households	3,600	39,200	112,540
# of Persons per HH	2.5	2.4	2.4
Average HH Income	\$109,738	\$93,531	\$86,780
Average House Value	\$234,051	\$199,649	\$206,867
RACE	1 MILE	3 MILES	5 MILES
Total Population - White	6,012	58,358	161,596
Total Population - Black	2,044	27,429	86,806
Total Population - Asian	228	1,632	5,477
Total Population - Other	140	1,269	3,437
TRAFFIC COUNTS			
WB Schoolcraft Rd	7,018+ VPD		
EB Schoolcraft Rd	7,212+VPD		
WB I-96	78,395+ VPD		
EB I-96	83,605+ VPD		

Demographics data derived from AlphaMap



BRAD KORN

248.985.8509

bkorn@keystonecres.com

NORMAN ABRO

248.406.7117

nabro@keystonecres.com



ABSOLUTE NNN

28300 SCHOOLCRAFT RD, LIVONIA, MI 48150

BROKERS

BRAD KORN

Advisor

bkorn@keystonecres.com

MI #650461361



NORMAN ABRO

Senior Advisor

nabro@keystonecres.com

BRAD KORN

248.985.8509

bkorn@keystonecres.com

NORMAN ABRO

248.406.7117

nabro@keystonecres.com

