

**3888 S. Sherwood Forest Boulevard  
Baton Rouge, LA 70816**

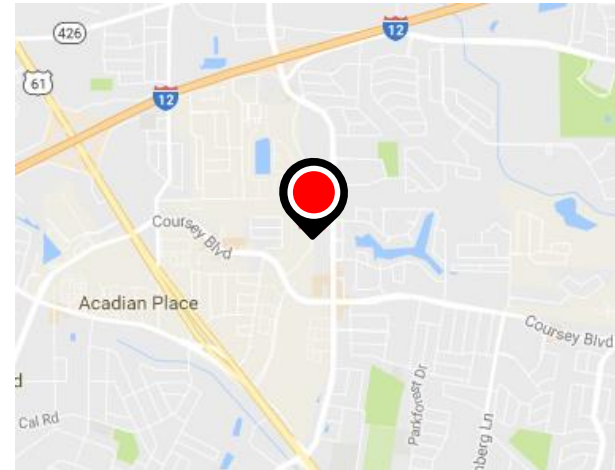
Office Park

Office Space For Lease



## Property Features

- Suite F- +/- 2,900 SF
- \$16/SF Modified Gross
- Class A Finishes
- Owner Pays: Water/Sewer, Real Estate Taxes, Hazard Insurance, & Maintenance
- Free Rent Available with Term Leases



**NALatter & Blum**

**Jonann Stutzman**

225.614.7675

jonann@latterblum.com

**Ty Gose**

225.295.0800

ty@latterblum.com

LICENSED IN LOUISIANA. NO WARRANTY OR REPRESENTATION, EXPRESS OR IMPLIED, IS MADE AS TO THE ACCURACY OF THE INFORMATION CONTAINED HEREIN, AND THE SAME IS SUBMITTED SUBJECT TO ERRORS, OMISSIONS, CHANGE OF PRICE, RENTAL OR OTHER CONDITIONS, PRIOR SALE, LEASE OR FINANCING, OR WITHDRAWAL WITHOUT NOTICE, AND OF ANY SPECIAL LISTING CONDITIONS IMPOSED BY OUR PRINCIPALS NO WARRANTIES OR REPRESENTATIONS ARE MADE AS TO THE CONDITION OF THE PROPERTY OR ANY HAZARDS CONTAINED THEREIN ARE ANY TO BE IMPLIED.

1700 City Farm Drive  
Baton Rouge, LA 70806 USA  
225.295.0800

[www.latterblum.com](http://www.latterblum.com)

**3888 S. Sherwood Forest Boulevard  
Baton Rouge, LA 70816**

Office Park

Office Space For Lease



**NALatter & Blum**

**Jonann Stutzman**  
225.614.7675  
jonann@latterblum.com

**Ty Gose**  
225.295.0800  
ty@latterblum.com

LICENSED IN LOUISIANA. NO WARRANTY OR REPRESENTATION, EXPRESS OR IMPLIED, IS MADE AS TO THE ACCURACY OF THE INFORMATION CONTAINED HEREIN, AND THE SAME IS SUBMITTED SUBJECT TO ERRORS, OMISSIONS, CHANGE OF PRICE, RENTAL OR OTHER CONDITIONS, PRIOR SALE, LEASE OR FINANCING, OR WITHDRAWAL WITHOUT NOTICE, AND OF ANY SPECIAL LISTING CONDITIONS IMPOSED BY OUR PRINCIPALS NO WARRANTIES OR REPRESENTATIONS ARE MADE AS TO THE CONDITION OF THE PROPERTY OR ANY HAZARDS CONTAINED THEREIN ARE ANY TO BE IMPLIED.

1700 City Farm Drive  
Baton Rouge, LA 70806 USA  
225.295.0800  
[www.latterblum.com](http://www.latterblum.com)



**3888 S. Sherwood Forest Boulevard  
Baton Rouge, LA 70816**

Office Park

Office Space For Lease



**NALatter & Blum**

**Jonann Stutzman**

225.614.7675

jonann@latterblum.com

**Ty Gose**

225.295.0800

ty@latterblum.com

LICENSED IN LOUISIANA. NO WARRANTY OR REPRESENTATION, EXPRESS OR IMPLIED, IS MADE AS TO THE ACCURACY OF THE INFORMATION CONTAINED HEREIN, AND THE SAME IS SUBMITTED SUBJECT TO ERRORS, OMISSIONS, CHANGE OF PRICE, RENTAL OR OTHER CONDITIONS, PRIOR SALE, LEASE OR FINANCING, OR WITHDRAWAL WITHOUT NOTICE, AND OF ANY SPECIAL LISTING CONDITIONS IMPOSED BY OUR PRINCIPALS NO WARRANTIES OR REPRESENTATIONS ARE MADE AS TO THE CONDITION OF THE PROPERTY OR ANY HAZARDS CONTAINED THEREIN ARE ANY TO BE IMPLIED.

1700 City Farm Drive  
Baton Rouge, LA 70806 USA  
225.295.0800

[www.latterblum.com](http://www.latterblum.com)

**3888 S. Sherwood Forest Boulevard  
Baton Rouge, LA 70816**

Office Park

Office Space For Lease



**NALatter & Blum**

**Jonann Stutzman**

225.614.7675

jonann@latterblum.com

**Ty Gose**

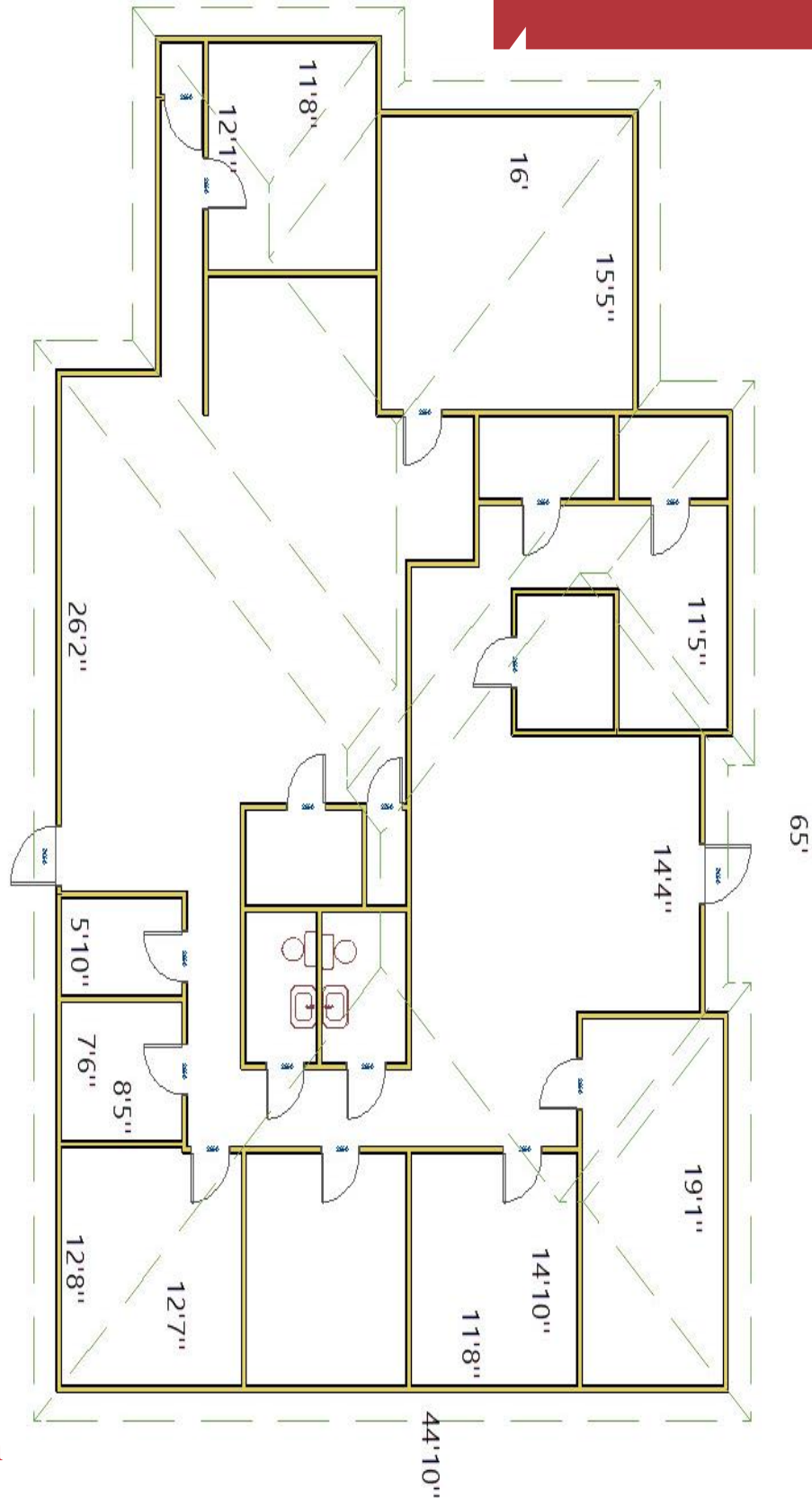
225.295.0800

ty@latterblum.com

LICENSED IN LOUISIANA. NO WARRANTY OR REPRESENTATION, EXPRESS OR IMPLIED, IS MADE AS TO THE ACCURACY OF THE INFORMATION CONTAINED HEREIN, AND THE SAME IS SUBMITTED SUBJECT TO ERRORS, OMISSIONS, CHANGE OF PRICE, RENTAL OR OTHER CONDITIONS, PRIOR SALE, LEASE OR FINANCING, OR WITHDRAWAL WITHOUT NOTICE, AND OF ANY SPECIAL LISTING CONDITIONS IMPOSED BY OUR PRINCIPALS NO WARRANTIES OR REPRESENTATIONS ARE MADE AS TO THE CONDITION OF THE PROPERTY OR ANY HAZARDS CONTAINED THEREIN ARE ANY TO BE IMPLIED.

1700 City Farm Drive  
Baton Rouge, LA 70806 USA  
225.295.0800

[www.latterblum.com](http://www.latterblum.com)



**Jonann Stutzman**

225.445.0473

jonann@latterblum.com