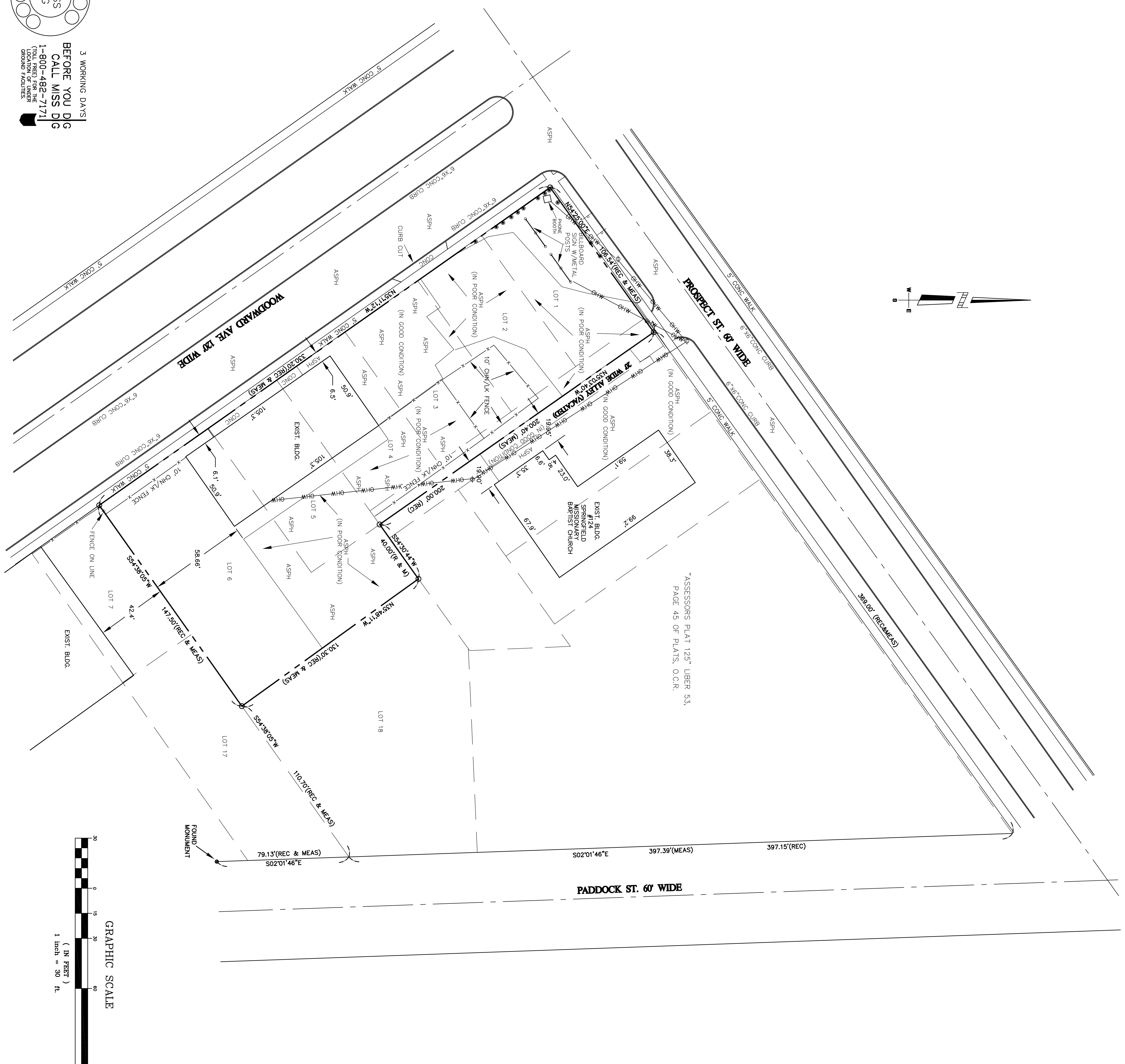
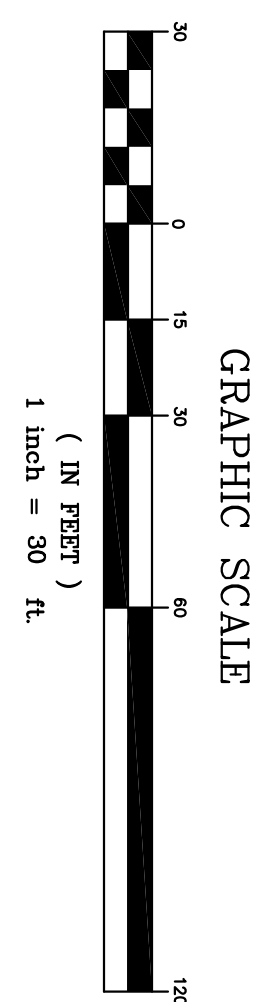


3 WORKING DAYS
BEFORE YOU DIG
CALL MISS DIG
1-800-482-7171
(LOCATION OF UNDERGROUND FACILITIES)



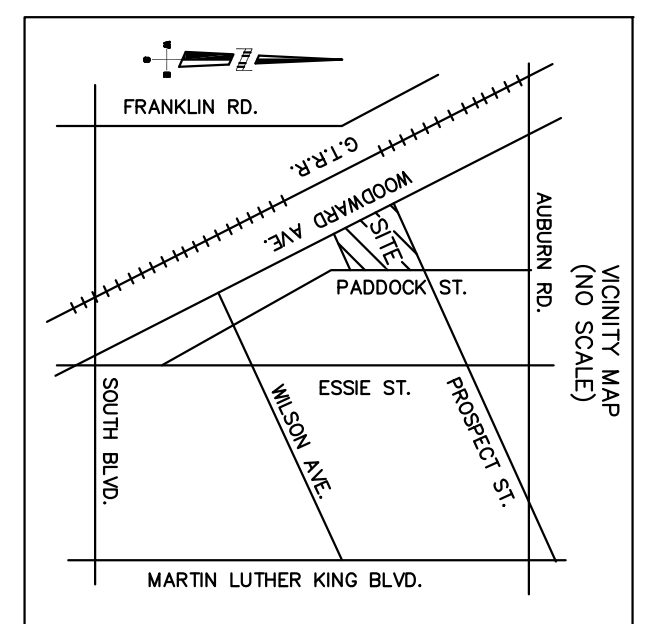
*ASSESSORS PLAT 125' LIBER 53,
PAGE 45 OF PLATS, O.C.R.



PROPERTY DESCRIPTION
LOTS 1 THROUGH 6 AND SLY 1/2 OF VACATED ALLEY (20' WIDE), OF "ASSESSORS PLAT 125" AS RECORDED IN LIBER 53, PAGE 45 OF PLATS, OAKLAND COUNTY, MICHIGAN, CONTAINING 40,000.00 SQ/FT OR 0.927 ACRES, MORE OR LESS.

CERTIFY TO: WOODWARD TRUST
THIS IS TO CERTIFY THAT THIS MAP OR PLAT AND THE SURVEY ON WHICH IT IS BASED WERE MADE IN ACCORDANCE WITH MINIMUM STANDARD DETAIL REQUIREMENTS FOR ALTA/ACSM LAND TITLE SURVEY. JOINTLY ESTABLISHED AND ADOPTED BY ALTA, ACSM AND NSPS IN 1999, AND INCLUDES ITEMS 12.4, (G), (8) & (10) OF TABLE "A" THEREOF. PURSUANT TO THE ACCURACY STANDARDS AS ADOPTED BY ALTA, NSPS AND ACSM AND IN ACCORDANCE WITH THE STANDARDS AND PRACTICES OF THE SURVEYING PROFESSION, THE POSITIONAL UNCERTAINTIES RESULTING FROM THE SURVEY MEASUREMENTS MADE ON THE SURVEY DO NOT EXCEED THE ALLOWABLE POSITIONAL TOLERANCE.
DATE: _____

WILLIAM G. CARLSON
PROFESSIONAL ENGINEER (CIVIL)
AND LAND SURVEYOR, NO. 147599



- LEGEND
- ⊕ LUTILITY POLE
 - SURV. METAL POST
 - FOUND IRON/MONUMENT
 - SET IRON
 - OVERHEAD WIRES

SHEET 1	JOB NO. 05-020	DATE 11-17-05	WOODWARD TRUST		ALTA/ACSM. LAND TITLE SURVEY		MASON L. BROWN & ASSOCIATES, INC. CIVIL ENGINEERS & SURVEYORS 1334 WHEATON TROY, MICHIGAN 48083 (248) 519-0400 FAX (248) 519-0403
			DESIGN: 05-050.DWG	REVISIONS: corrected client address	05-10-06	PONTIAC, MICH.	
SCALE: 1"=30'			45464 WOODWARD		PONTIAC, MICH. WOODWARD AVE.		PONTIAC, MICH.
FIELD CK: DB			CHECKED: WGC				