



9430 Michigan Ave

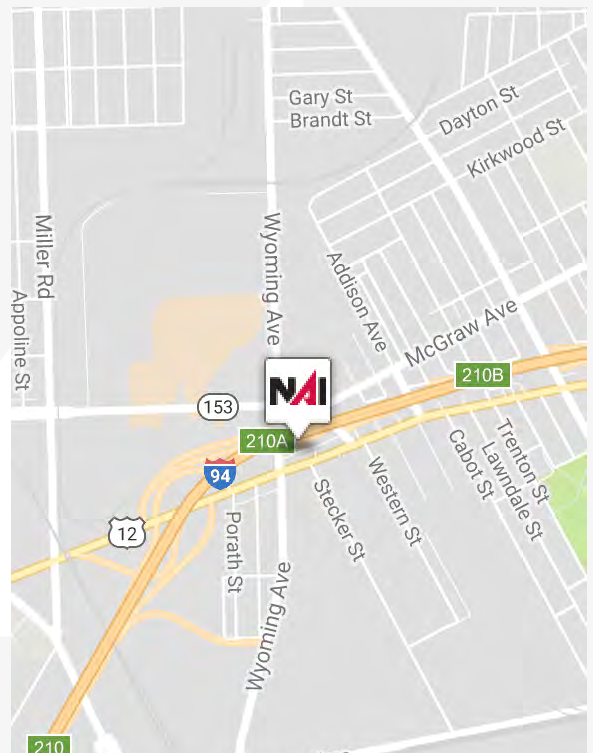
Detroit, Michigan 48210

Property Highlights

- Vacant Land For Sale/Ground Lease NNN
- Title Work Ready For Close
- Former 15,600 SF Two Story Building with 50 Parking Spaces
- All Utilities, multiple curb cuts
- Michigan Ave Frontage
- Highly Visible
- Strong Demographics & High Traffic
- Located at I-94
- Zoning B4: General Business - Highest Zoning Classification Available
- Bank Proof of Funds Required

Traffic Counts

Roads	Daily Traffic
I-94 and Weir St	86,211
I-94 and Wyoming Ave	80,246
Michigan Ave & Stecker St	22,300



For more information

Nanci Tarpley

O: 248 351 6323

tarpley@farbman.com



Commercial Real Estate Services, Worldwide.

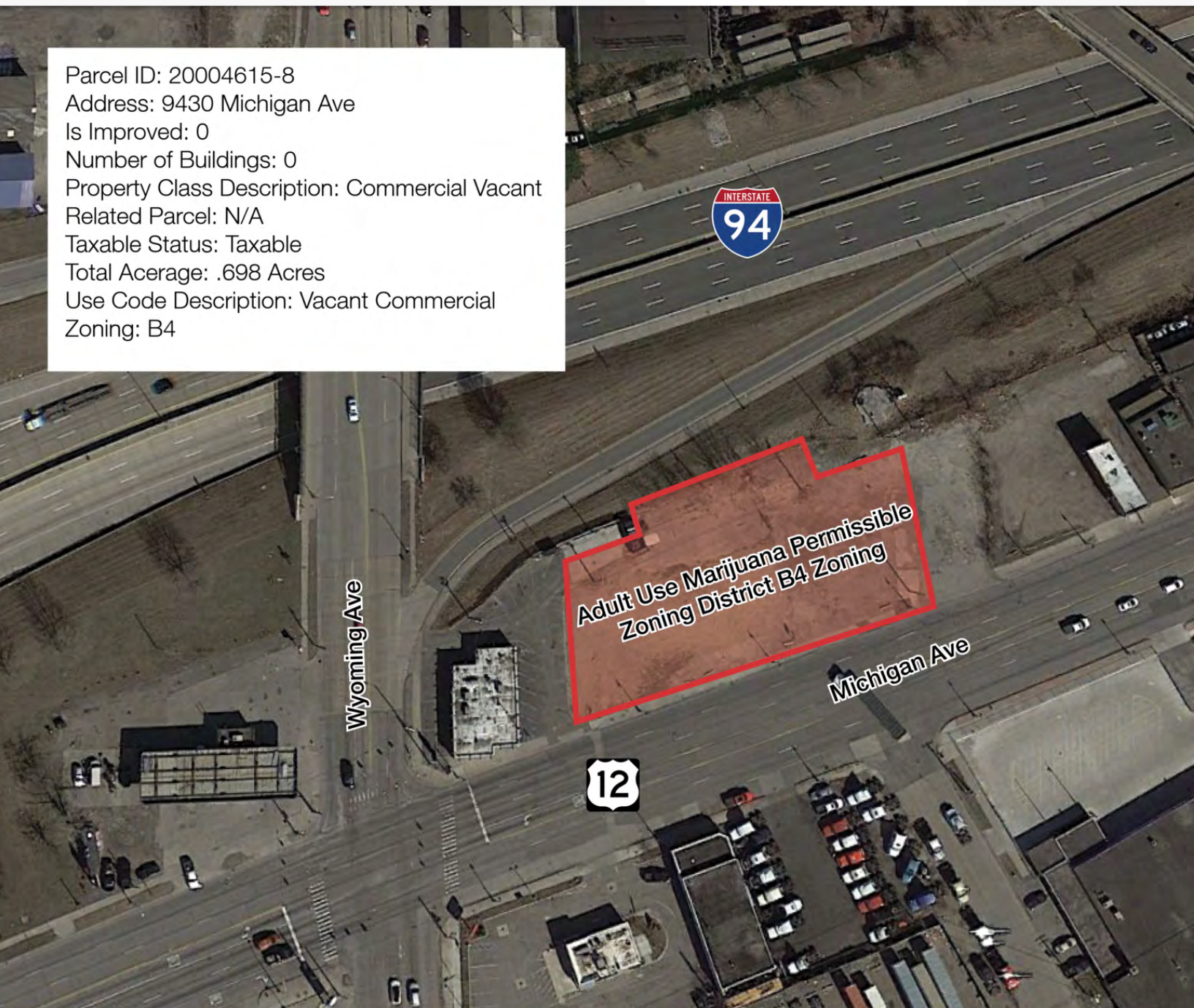


WWW.FARBMAN.COM
MIDWEST EXPERTISE, GLOBAL REACH.

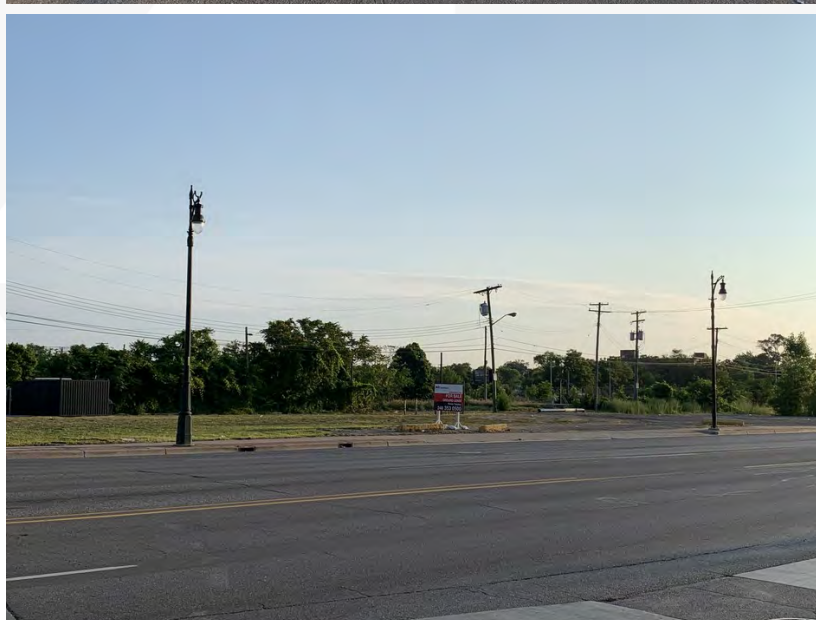
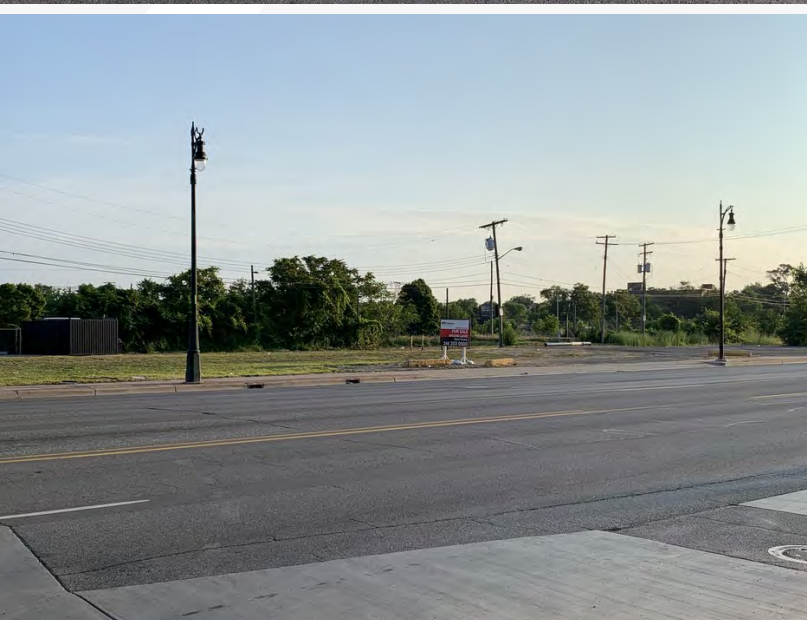


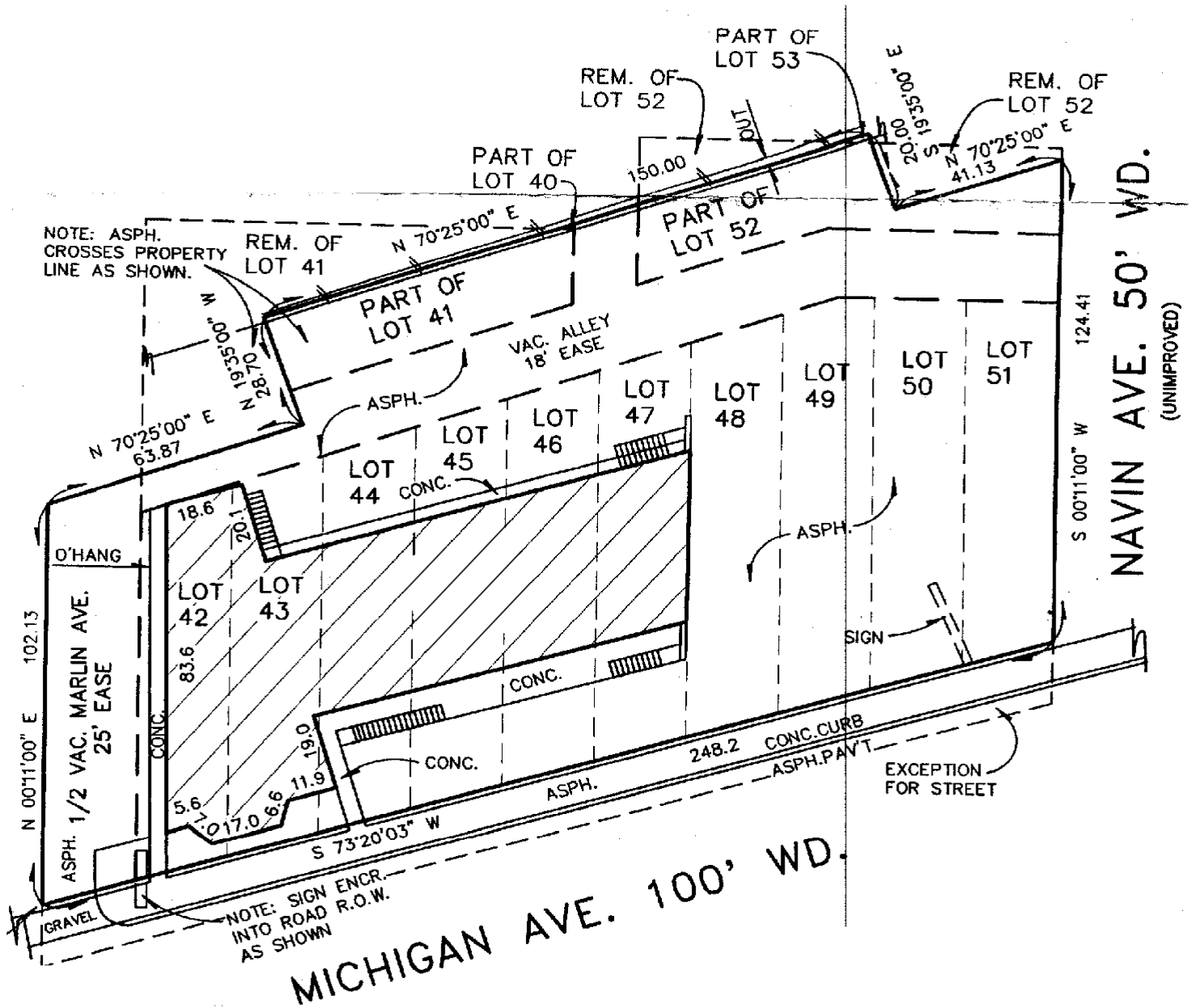
28400 Northwestern Hwy
Fourth Floor
Southfield, MI 48034
248 353 0500 tel
naifarbman.com

Parcel ID: 20004615-8
Address: 9430 Michigan Ave
Is Improved: 0
Number of Buildings: 0
Property Class Description: Commercial Vacant
Related Parcel: N/A
Taxable Status: Taxable
Total Acreage: .698 Acres
Use Code Description: Vacant Commercial
Zoning: B4



Additional Photos





Retailer Map



Map data ©2021 Imagery ©2021, CNES / Airbus, First Base Solutions, Landsat / Copernicus, Maxar Technologies, Sanborn, U.S. Geological Survey, USDA Farm Service Agency

Demographics Map



Population

	1 Mile	3 Miles	5 Miles
TOTAL POPULATION	18,023	161,887	384,974
MEDIAN AGE	25.7	29.8	32.1
MEDIAN AGE (MALE)	25.9	28.7	30.8
MEDIAN AGE (FEMALE)	25.3	30.4	33.0

Households & Income

	1 Mile	3 Miles	5 Miles
TOTAL HOUSEHOLDS	4,928	49,207	128,744
# OF PERSONS PER HH	3.7	3.3	3.0
AVERAGE HH INCOME	\$34,971	\$39,055	\$38,052
AVERAGE HOUSE VALUE	\$88,105	\$99,532	\$102,974

Race

	1 Mile	3 Miles	5 Miles
% WHITE	76.7%	56.4%	38.9%
% BLACK	6.3%	28.2%	50.9%
% ASIAN	3.5%	1.2%	0.9%
% HAWAIIAN	0.0%	0.0%	0.0%
% INDIAN	0.0%	0.6%	0.4%
% OTHER	13.6%	13.5%	8.9%

Ethnicity

	1 Mile	3 Miles	5 Miles
% HISPANIC	21.0%	22.6%	16.7%

* Demographic data derived from 2010 US Census