

ASSESSOR'S RECORD MAP

SECTION 25, TOWNSHIP 12 SOUTH, RANGE 12 EAST

(ALSO SEE MINERAL MAP FOR THIS SECTION)

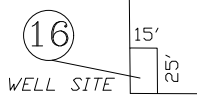
221-13(NE4)
 -14(NW4)
 -15(SW4)
 -16(SE4)
 -17(SUBS)
 -18(SUBS)

VISTA OESTE ESTATES
 LOTS 1-37, C.A. "A+B"
 45/075 M&P (221-13)

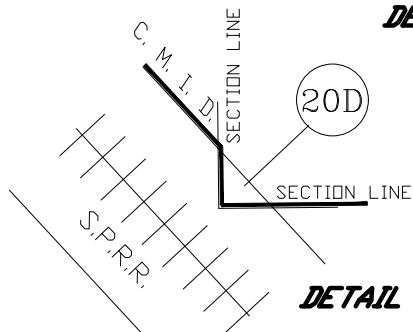
NOW
 SUNSET POINT RESUB
 LOTS 112-267
 41/004 M&P (221-17)

| | | | |
|---------|---------|---------|---------|
| 165' | 165' | 150' | 149.99' |
| 328.60' | 328.83' | 329.07' | 329.28' |
| (2L) | (2K) | (2M) | (2N) |
| 164.90' | 164.90' | 149.90' | 149.89' |

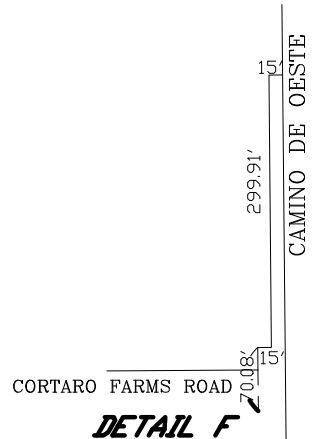
DETAIL E
 1"=300'



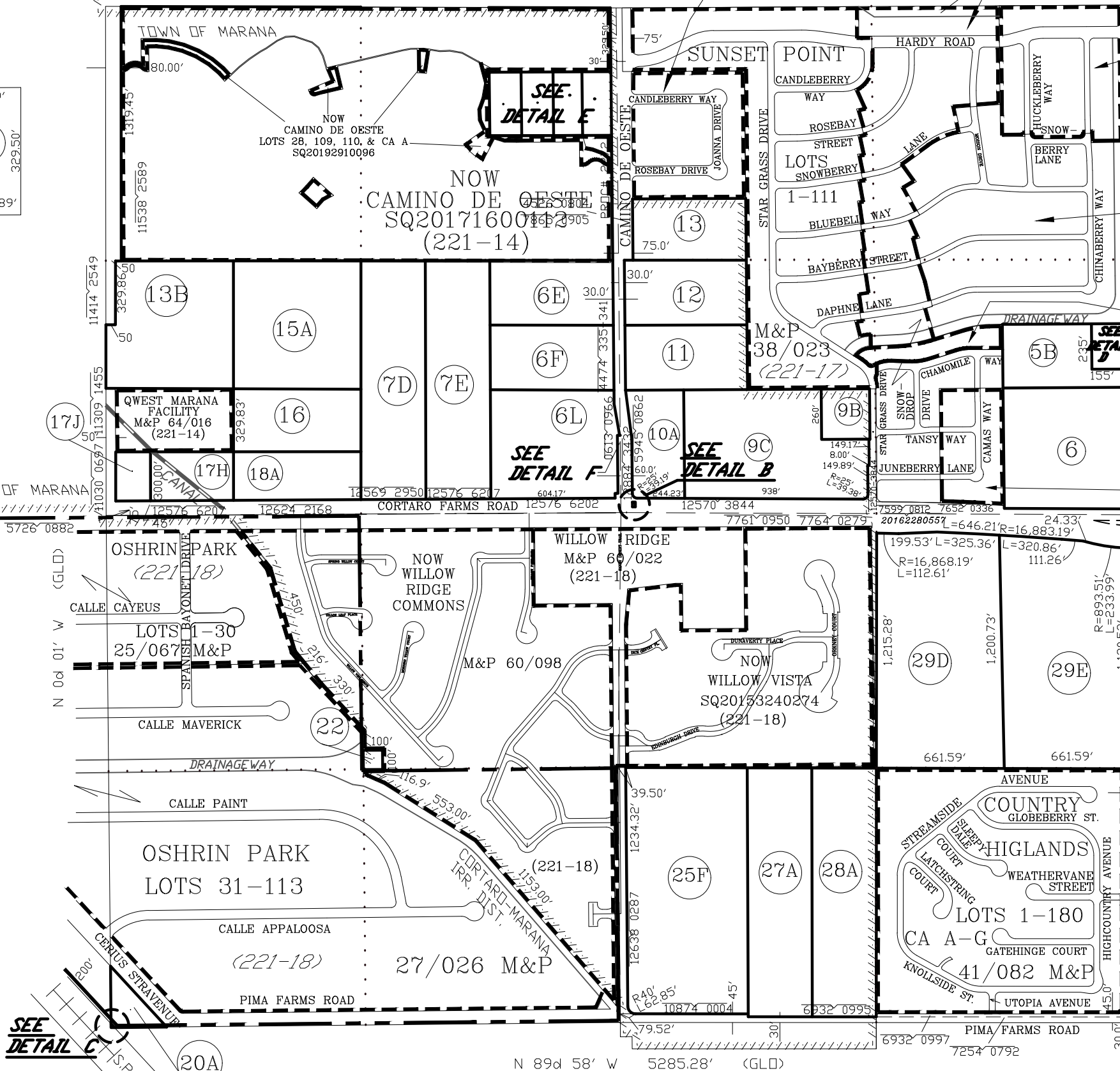
DETAIL B



DETAIL C



DETAIL F

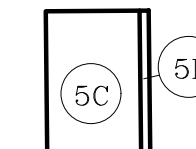


NOW
 SUNSET POINT NO.2
 LOTS 268-284,
 344-363
 44/090 M&P (221-13)

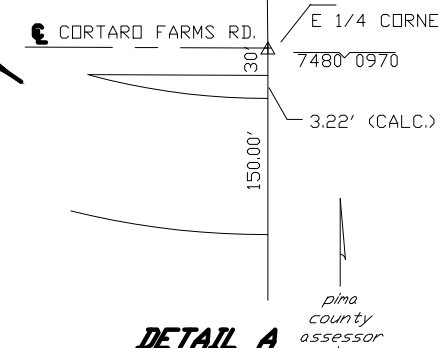
NOW
 SUNSET POINT NO. 2A
 LOTS 156-165, 175-185, 194-204
 213-219, 239
 43/013 M&P (221-17)

NOW
 SUNSET POINT RESUB II
 LOTS 141-149
 41/036 M&P (221-17)

NOW
 SUNSET POINT
 LOTS 366-387
 43/047 M&P (221-17)



DETAIL D
 1"=300'



DETAIL A

2021-1
 T12S1212E25- 03/24/21
 SEE BOOK 13, PAGE 043, R.S.
 0 300 600 900 1200
 FEET