

FOR SALE

1.24 Acre Walmart Outparcel

RETAIL



PROPERTY INFO

**3430 TAYLOR AVE
EVANSVILLE, IN 47714
STORE #5372**

- + Located next to national retailers and restaurants
 - Walmart Neighborhood Market and Family Dollar on site
 - McDonald's and Taco Bell located at this intersection
- + Located in the heart of heavy residential densities
 - Nearly 70,000 people in 3 miles
- + Convenient to St. Vincent / Ascension Hospital – 443 beds
- + Multiple points of ingress/egress



Total Population

5 Minutes	30,140
10 Minutes	82,774
15 Minutes	149,652

Number of Households

5 Minutes	13,375
10 Minutes	35,313
15 Minutes	63,816

Average HH Income

5 Minutes	\$54,903
10 Minutes	\$55,948
15 Minutes	\$60,774

Source: Esri, 2018 Estimates

CONTACT US

Dean Almas

Senior Associate
+1 317 269 1000
dean.almas@cbre.com

Nate Delumpa

Associate
+ 1 317 269 1000
nathaniel.delumpa@cbre.com

CBRE, Inc.

8888 Keystone Crossing
Suite 1000
Indianapolis, IN 46240
Licensed Real Estate Broker

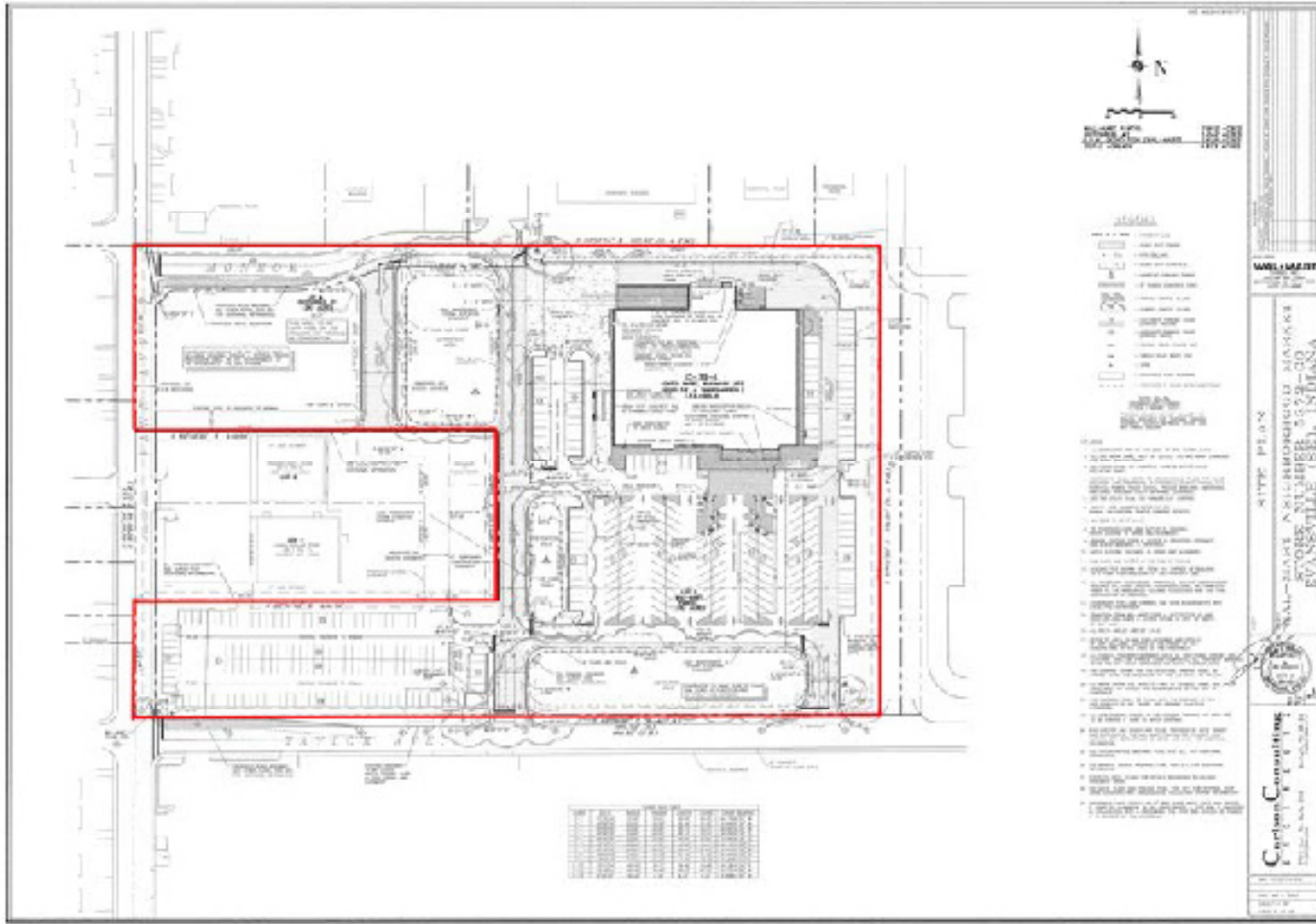
© 2020 CBRE, Inc. All rights reserved. This information has been obtained from sources believed reliable, but has not been verified for accuracy or completeness. You should conduct a careful, independent investigation of the property and verify all information. Any reliance on this information is solely at your own risk. CBRE and the CBRE logo are service marks of CBRE, Inc. All other marks displayed on this document are the property of their respective owners. Photos herein are the property of their respective owners. Use of these images without the express written consent of the owner is prohibited.

FOR SALE

1.24 Acre Walmart Outparcel

RETAIL

 SITE PLAN



3430 TAYLOR AVE EVANSVILLE, IN 47714

www.cbre.us/walmart



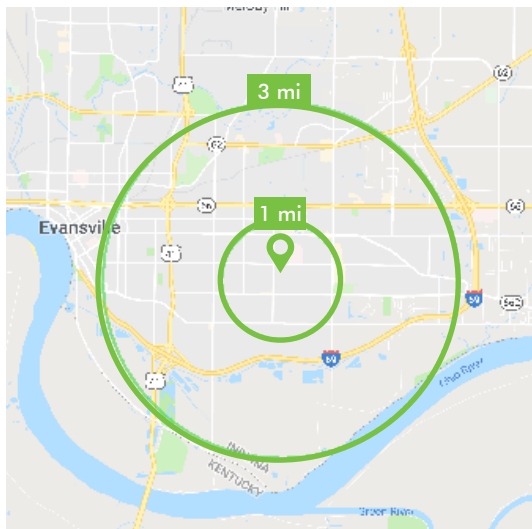
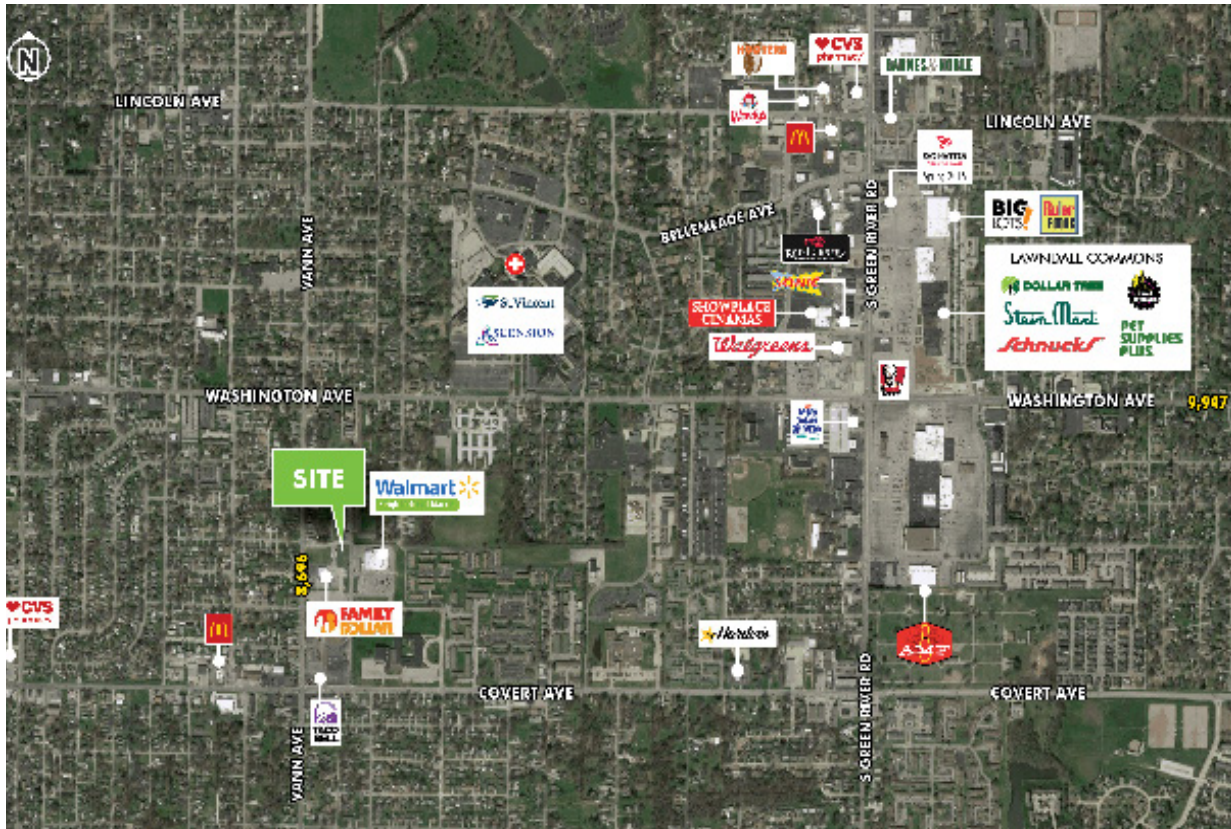
FOR SALE

1.24 Acre Walmart Outparcel

RETAIL



RETAIL TRADE AREA



Demographics

	1 Mile	3 Miles	5 Miles
Total Population	13,444	69,076	114,200
Number of Households	5,972	29,130	48,665
Average HH Income	\$52,929	\$55,524	\$57,443

Source: Esri, 2018 Estimates