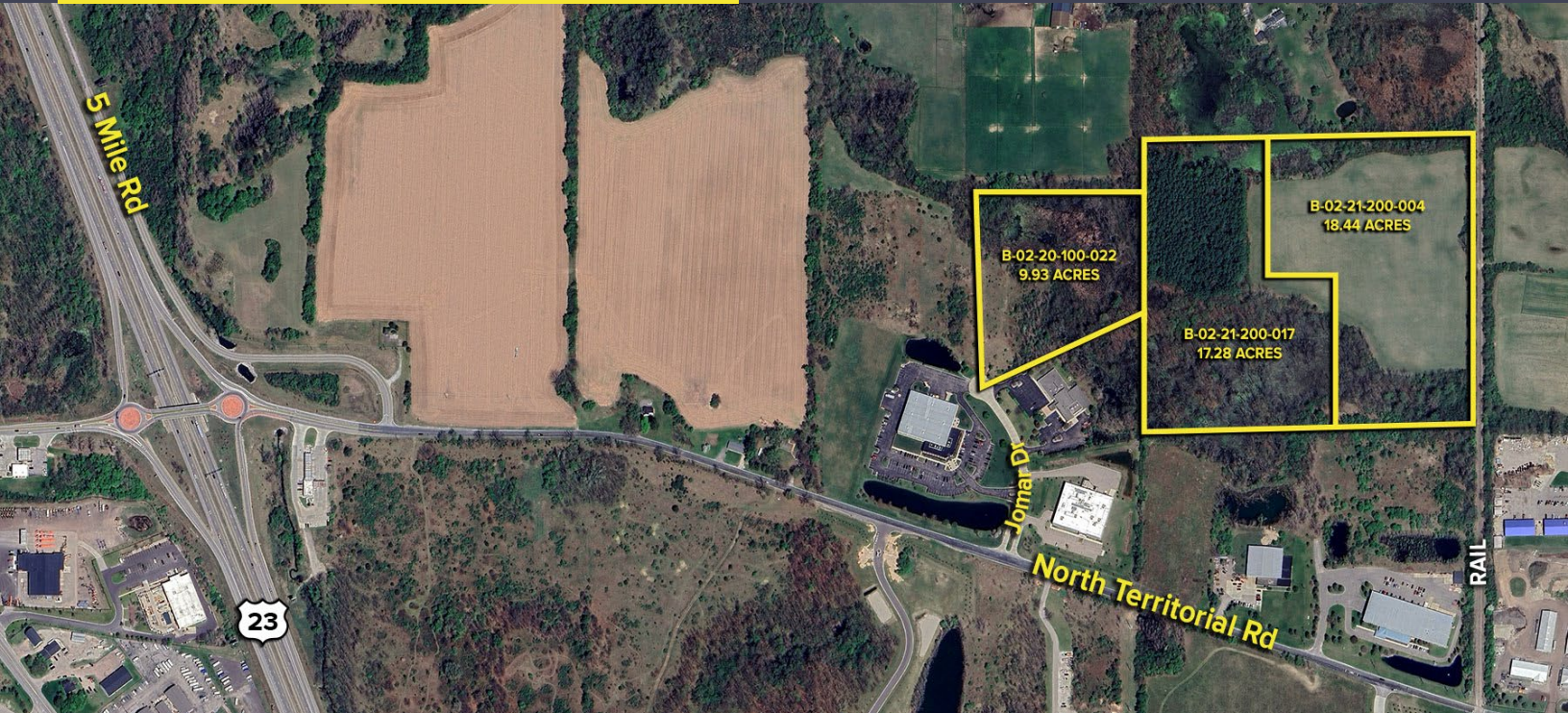


JOMAR DRIVE NORTHFIELD TWP., MICHIGAN

LAND FOR SALE
45.65 Acres Available

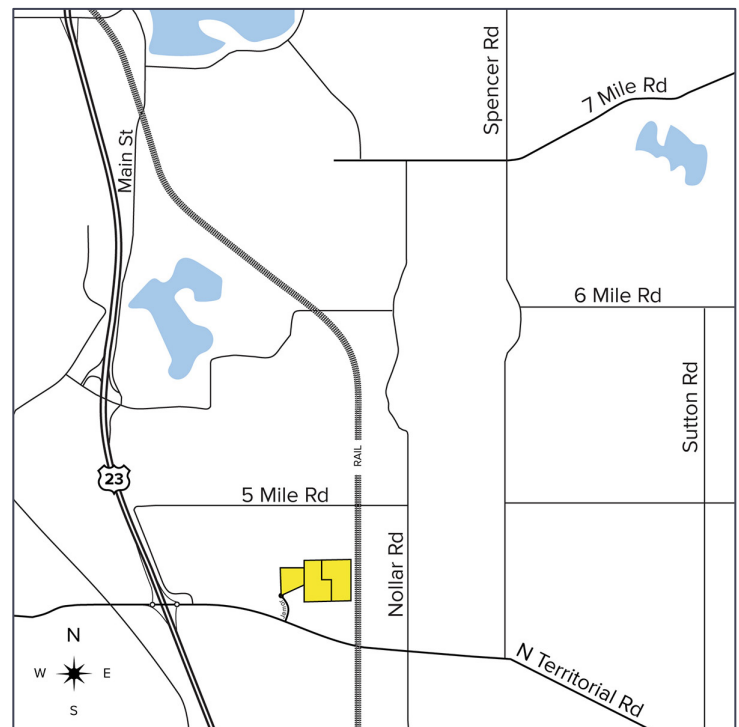


**SIGNATURE
ASSOCIATES**
KNOW SIGNATURE | KNOW RESULTS



PROPERTY FEATURES

- 45.65 acres available (approx. 35 buildable acres)
- Join Balance Technologies, Creative Automation and United Technical in this rapidly growing technology park
- Prior site plan approval for seven individual lots
- Build-to-suit opportunities from 10,000 – 300,000 square feet
- All utilities at Jomar Drive (excluding water)
- Zoned RTM – Research / Technology / Manufacturing District
- Directly adjacent to Great Lakes Central Railroad
- Strategic US-23 Highway access connecting Brighton and Ann Arbor
- Adjacent DTE substation
- Sale Price: \$2,380,000 (\$68,000/buildable acre)



For more information, please contact:

DRAKE FILIPPIS

(248) 799 3161

dfilippis@signatureassociates.com

CHRIS D'ANGELO

(248) 948 0109

cdangelo@signatureassociates.com

STEVE GORDON

(248) 948 0101

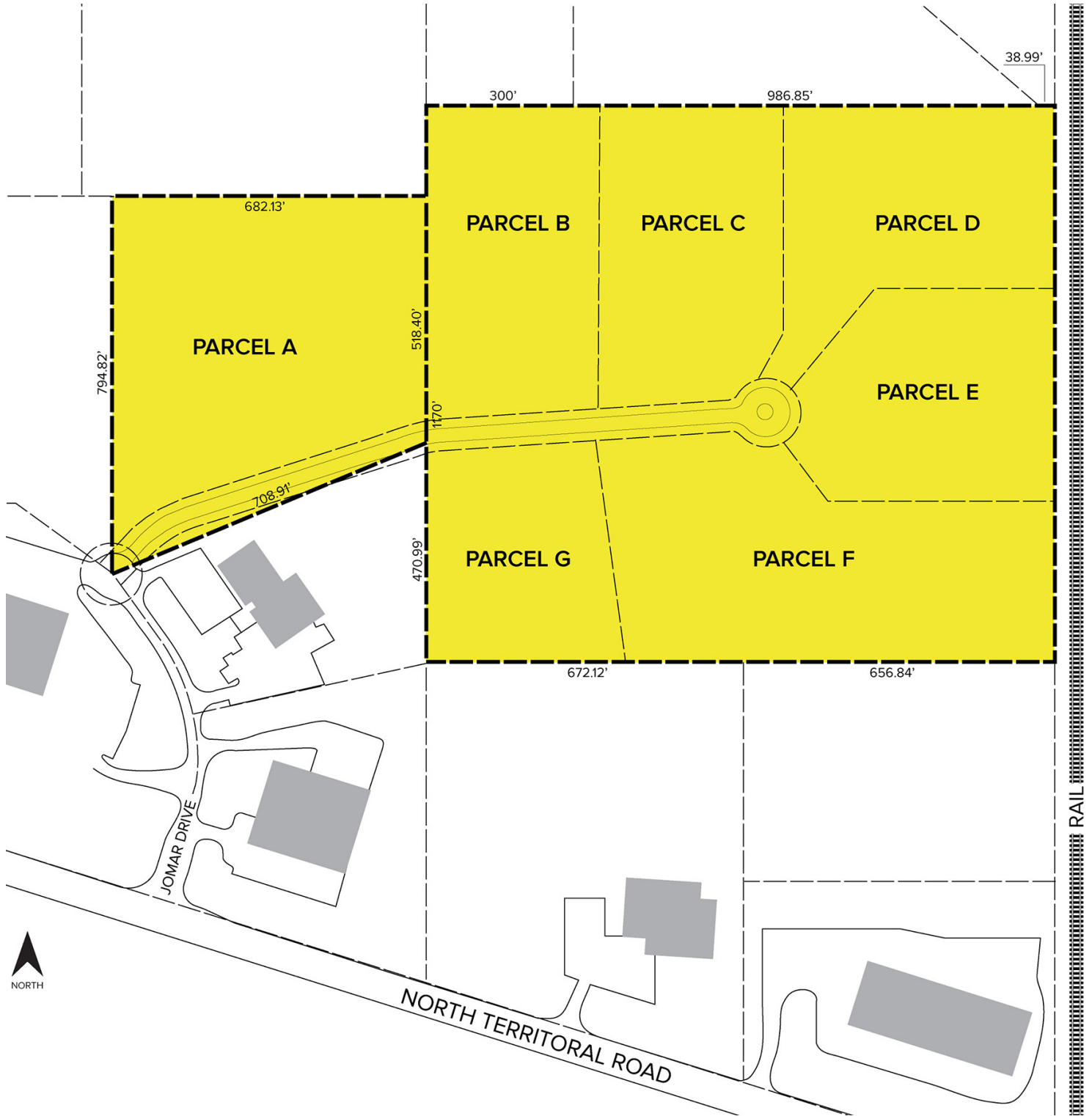
sgordon@signatureassociates.com

Jomar Drive – Northfield Twp., Michigan

Land For Sale

45.65
Acres
AVAILABLE

Previously Approved Site Plan



For more information, please contact:

DRAKE FILIPPIS
(248) 799 3161

CHRIS D'ANGELO
(248) 948 0109

STEVE GORDON
(248) 948 0101

SIGNATURE ASSOCIATES
One Towne Square, Suite 1200
Southfield, MI 48076
www.signatureassociates.com