



For Lease

Flex Space

260-350 Cramer Creek Court
Dublin, OH 43017

Cramer Creek Corporate Center consists of four, multi-tenant, flex buildings totaling 98,284 SF on 10.12 acres in Columbus' well established Dublin suburb. The property is ideally situated at the corner of Frantz Road and Rings Road between Tuttle Crossing and SR-161; less than one mile from the SR-33 and I-270 exit to the north and the Tuttle Mall interchange to the south. There are numerous amenities in the area including restaurants, hotels, and shopping. This is a class A development offering versatile layouts for a wide range of tenants seeking office and warehouse space.

Cramer Creek Corporate Center
is owned by:



Available Space

8,190 - 9,510 ± SF

Lease Rate

Negotiable

Operating Expenses
(estimated 2026)

\$7.43/SF

Space Overview

260-350 Cramer Creek Court
Dublin, OH 43017

- Wet sprinkler system
- 14' - 16' clear height
- Fully air conditioned suites, including warehouse area
- Ample parking
- Signage opportunities
- Year built: 1986/1989

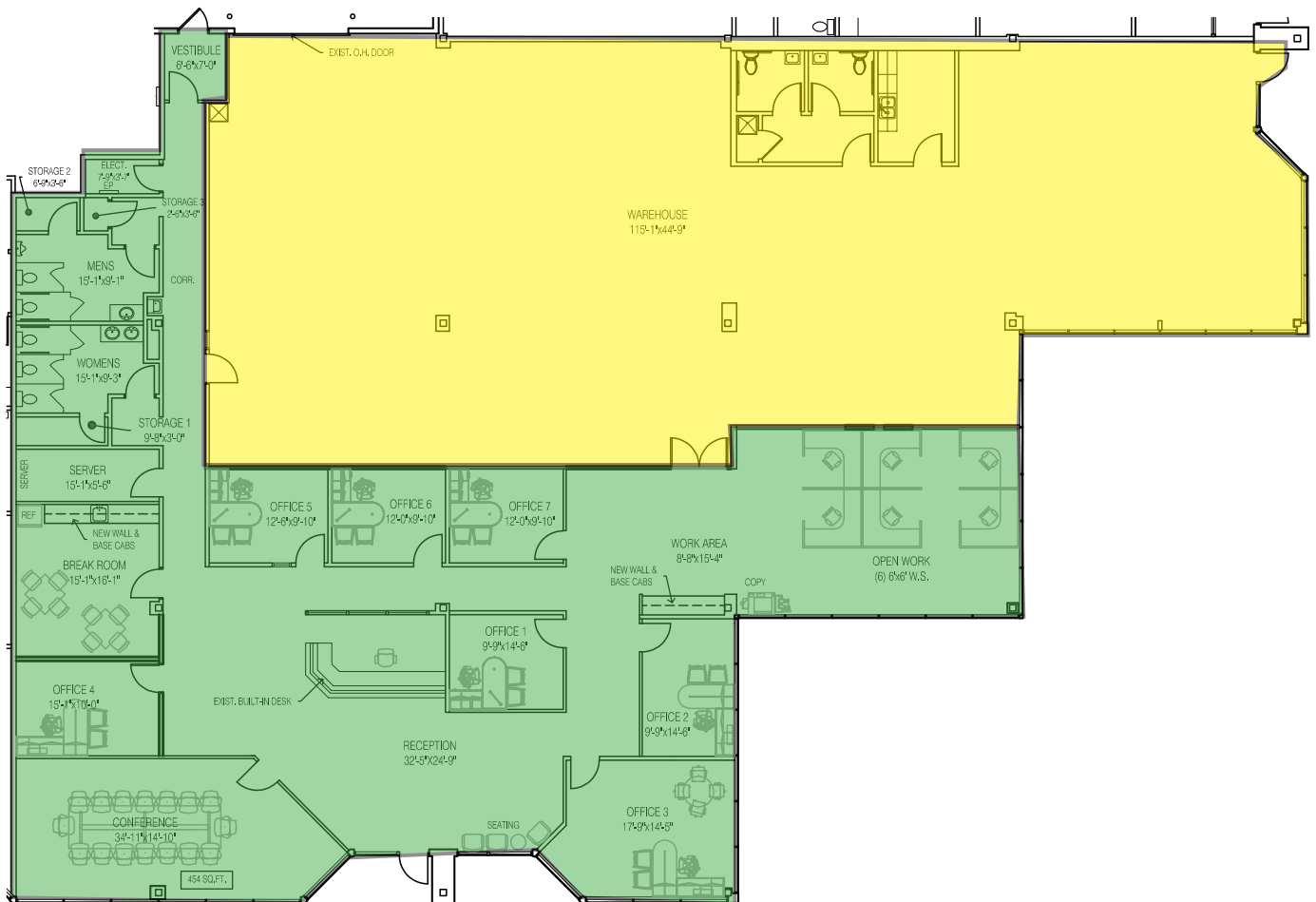
Suite	Total SF	Warehouse SF	Office SF	Date Available	Dock / Drive-in Doors
284-288	9,510 ± SF	4,707 ± SF	4,803 SF	Immediately	0/1
270	8,190 ± SF	1,198 ± SF* <i>*open work area</i>	7,712 ± SF	Immediately	0/2



Floor Plan

260-350 Cramer Creek Court
Dublin, OH 43017

Suite 284 - 288 - 9,510 ± SF

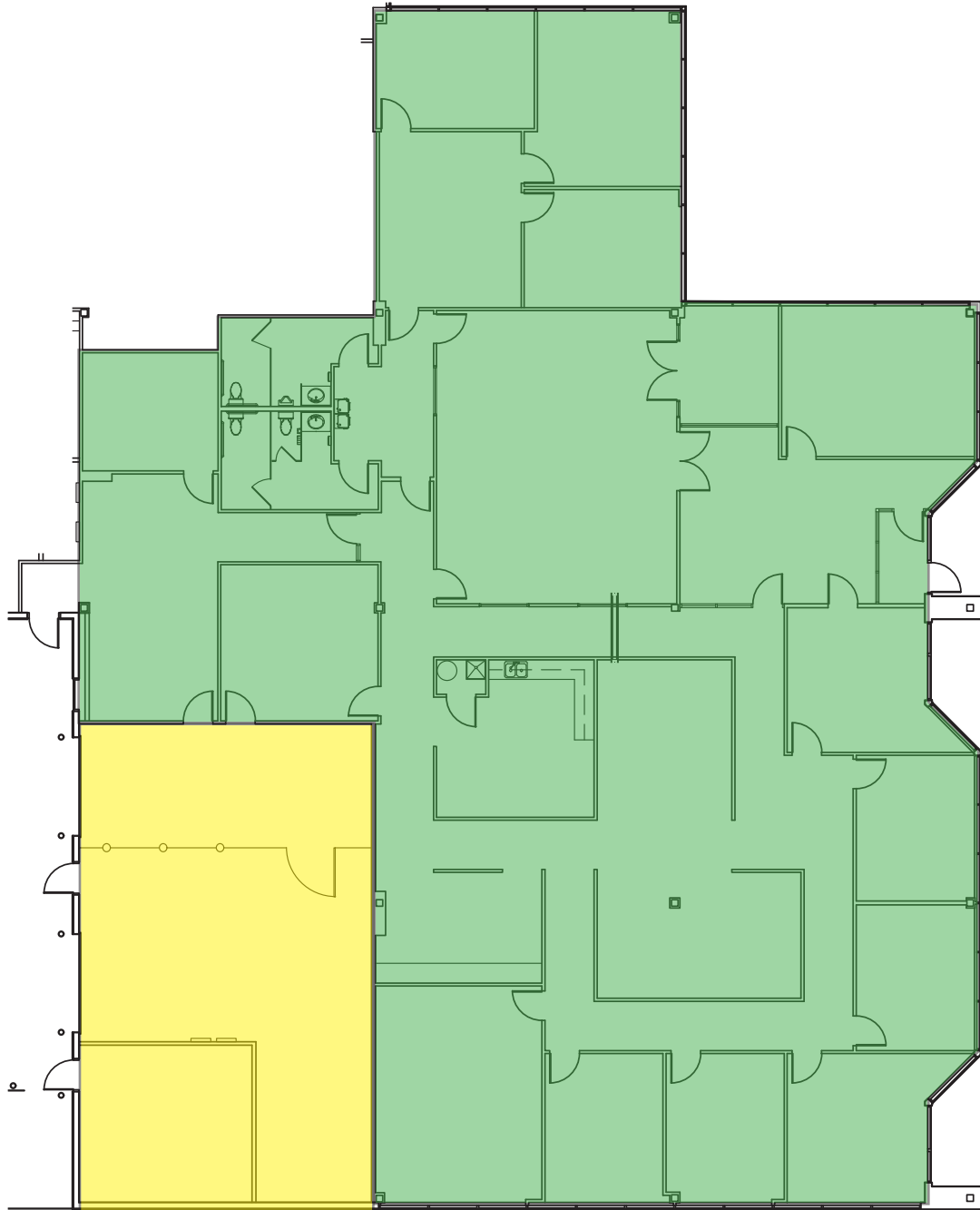


- Warehouse
- Office

Floor Plan

260-350 Cramer Creek Court
Dublin, OH 43017

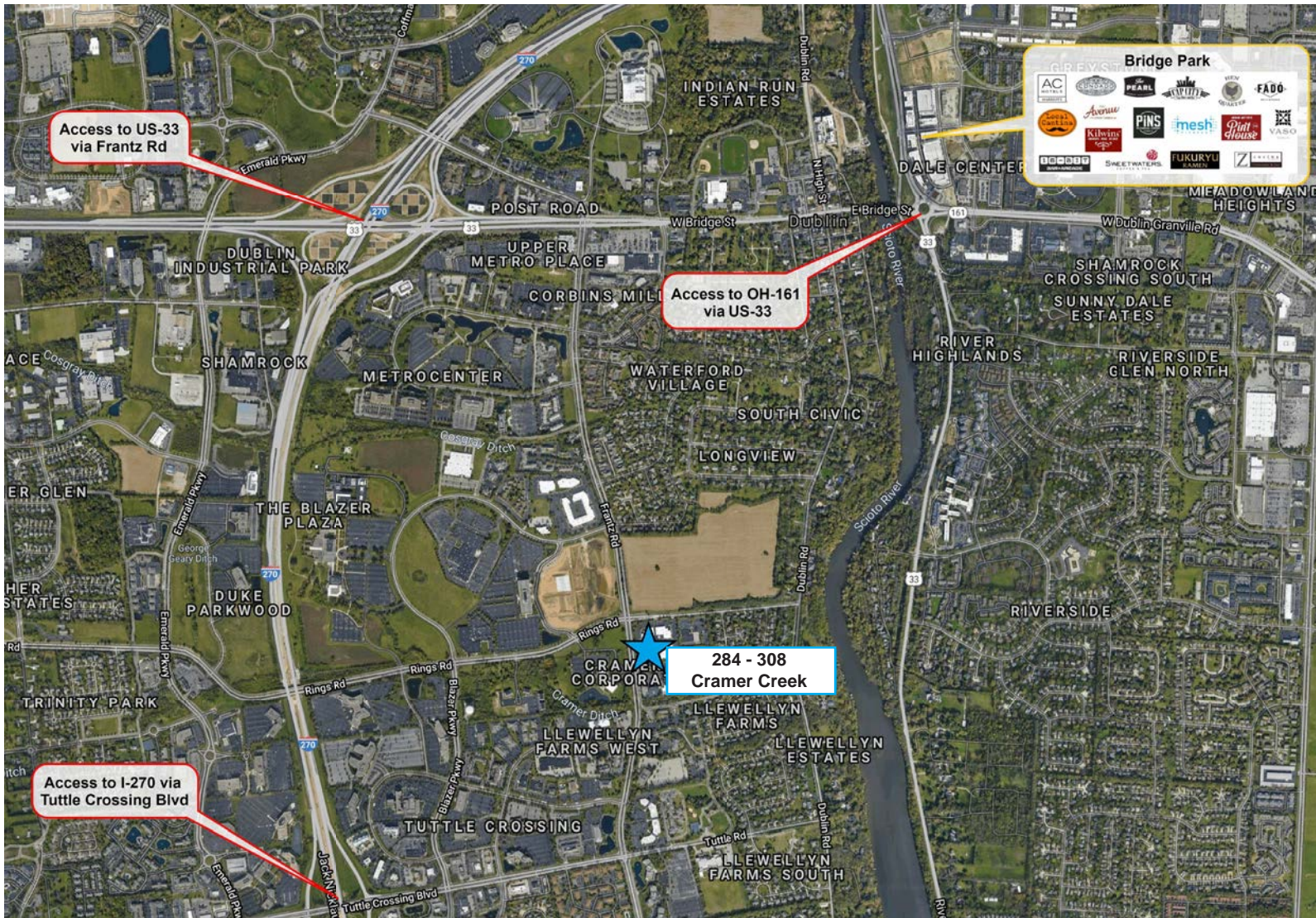
Suite 270 - 8,190 ± SF



- Warehouse
- Office

Access Map

260-350 Cramer Creek Court
Dublin, OH 43017



Kyle M. Ghiloni, SIOR 614.437.4515 Columbus, OH kyle.ghiloni@colliers.com	Jonathan R. Schuen, SIOR 614.437.4495 Columbus, OH jonathan.schuen@colliers.com	Brett Cisler 614.437.4498 Columbus, OH brett.cislerr@colliers.com	Michael R. Linder, SIOR 614.410.5628 Columbus, OH michael.linder@colliers.com	Shane E. Woloshan, SIOR 614.410.5624 Columbus, OH shane.woloshan@colliers.com	Joel R. Yakovac, SIOR 614.410.5654 Columbus, OH joel.yakovac@colliers.com
---	---	---	---	---	---

The information contained herein was obtained from sources believed reliable; however, Colliers International makes no guarantees, warranties, or representations as to the completeness or accuracy thereof. The presentation of this property is submitted subject to errors, omissions, change of price or conditions prior to sale or lease, or withdrawal without notice.

Colliers | Greater Columbus Region
Two Miranova Place, Suite 900
Columbus, OH 43215
www.colliers.com