

# Geary Plaza

700 Washington Street E., Charleston, WV

Central Business District Location



## Property Highlights

- + \$17.50/SF Full Service
- + 65,000 SF Building
- + High visibility
- + Minutes from I-64, I-77 & I-79
- + Signage
- + Downtown Charleston amenities- shopping, restaurants and hotels
- + Parking garages nearby



# Geary Plaza

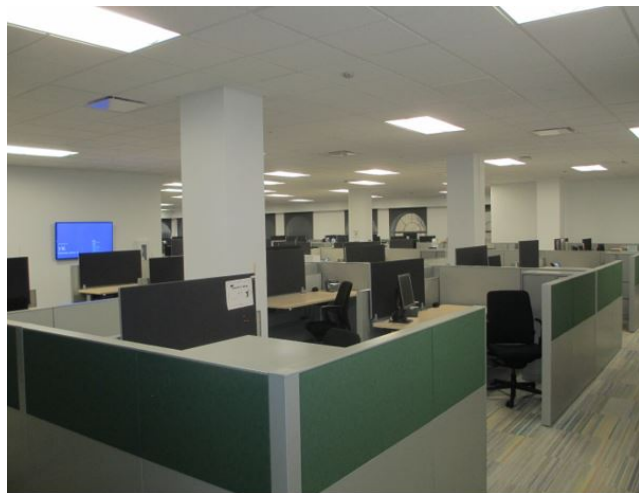
700 Washington Street E., Charleston, WV

# For Lease

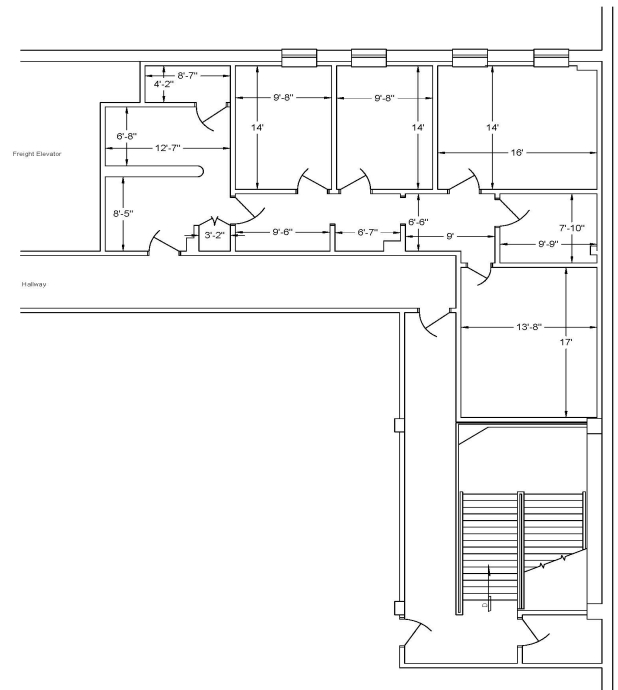
## First Floor

### Space Available:

- Basement- 7,000 SF (\$12.00/SF-Basement)
- 1st Floor-
- 2nd Floor- 1,000 SF
- 2nd Floor- 200 SF
- 4th Floor- 5,000 SF



## 2nd Floor



## Contact Us

### David Durbin

Broker  
 +1 304 382 5859  
 707 Virginia St. E.  
 Charleston, WV 25301  
 david.durbin@cbre.com

2023 Demographics	One Mile	Three Miles	Five Miles
Population	7,344	43,875	63,522
Households	3,925	20,007	29,200
Average Household Income	\$69,046	\$93,167	\$93,067
Businesses	1,728	2,983	3,989

© 2023 CBRE, Inc. All rights reserved. This information has been obtained from sources believed reliable, but has not been verified for accuracy or completeness. You should conduct a careful, independent investigation of the property and verify all information. Any reliance on this information is solely at your own risk. CBRE and the CBRE logo are service marks of CBRE, Inc. All other marks displayed on this document are the property of their respective owners, and the use of such logos does not imply any affiliation with or endorsement of CBRE. Photos herein are the property of their respective owners. Use of these images without the express written consent of the owner is prohibited.