



# BAKER CITY RETAIL

9 2 0   C A M P B E L L   S T R E E T   |   B A K E R   C I T Y ,   O R   9 7 8 1 4

# 920 CAMPBELL STREET BAKER CITY, OR 97814

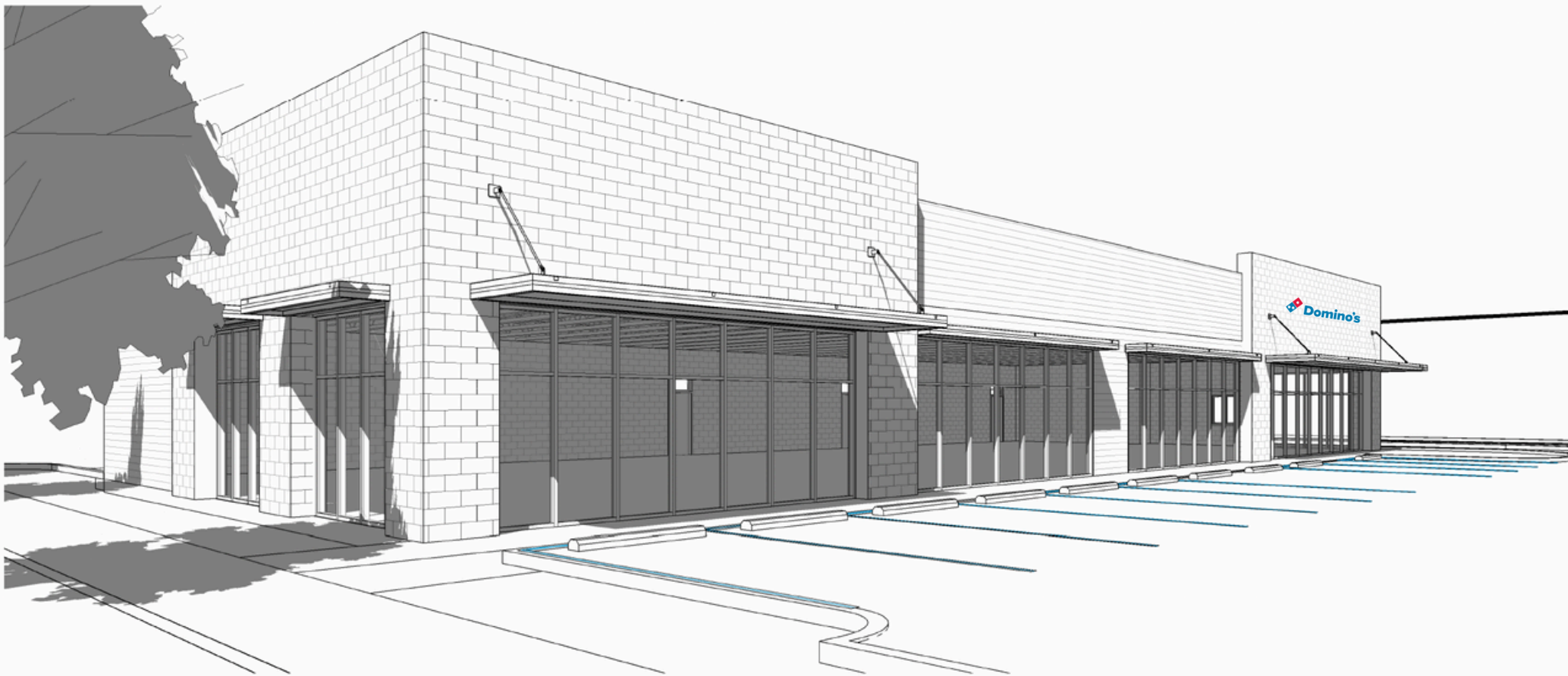


**1,500-4,500 SF**

RETAIL

**\$38 + NNN**

PER SQUARE FOOT



**10.1k**  
TOTAL  
POPULATION

**9.7k**  
DAYTIME  
POPULATION

**\$88.3k**  
AVG. HOUSEHOLD  
INCOME

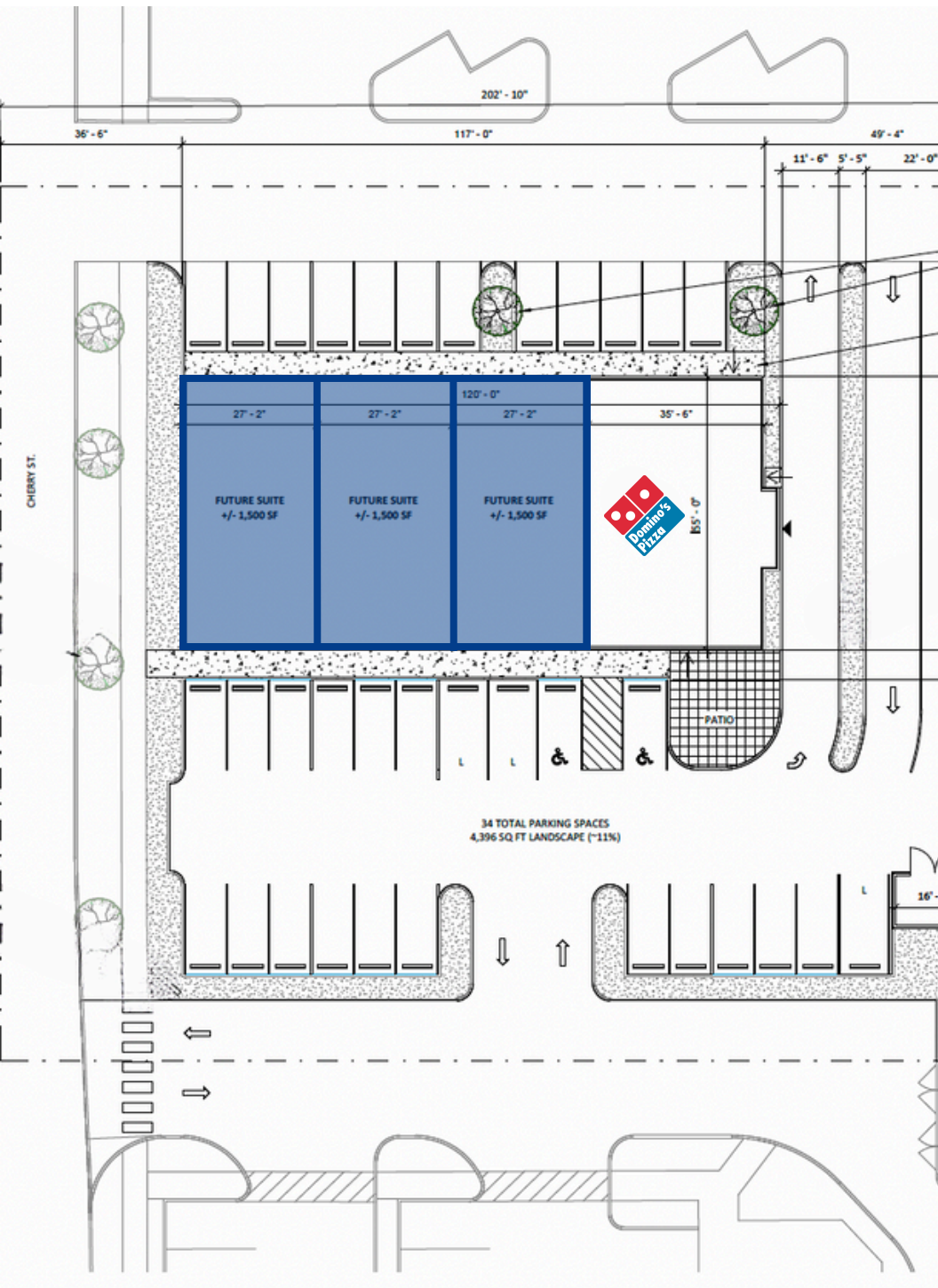
**5k**  
BUSINESSES

**4.4k**  
HOUSEHOLDS

**5k**  
EMPLOYEES

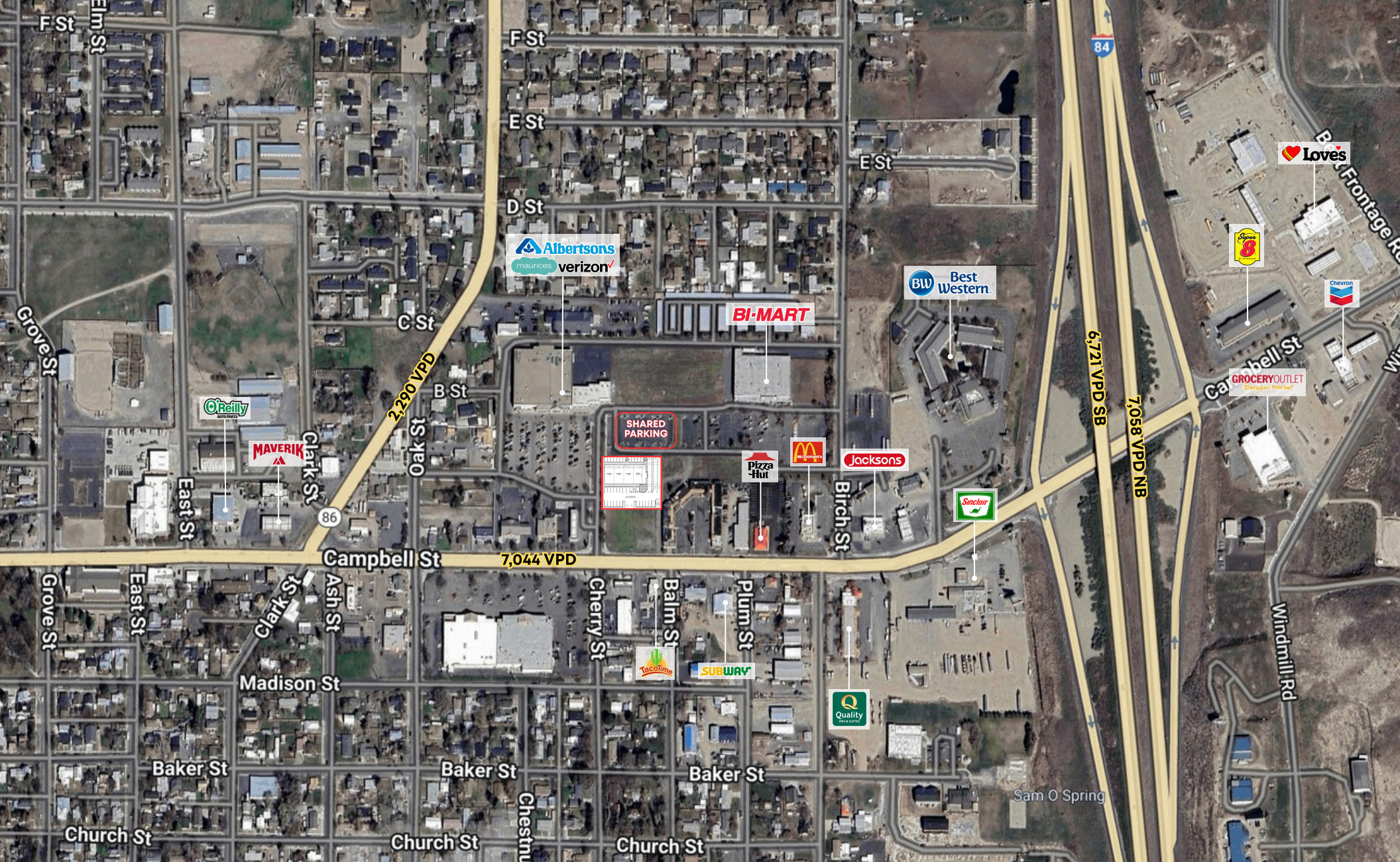
\*2025 PROJECTIONS 5 MILE RADIUS FROM SITE. COLLECTED VIA SITESUSA





- 1,500 - 4,500 SF of New Development Available with Late 2026 Delivery
- New construction building located in the heart of Baker City. Join Domino's in the market's premier retail center located just off Hwy 84. Abundant parking on site (5:1,000) with excellent visibility from Campbell Street. Adjacent to Bi Mart & Albertsons!





## Baker City OREGON

Baker City, Oregon is a historic town located in eastern Oregon, nestled in a picturesque valley between the Blue Mountains and the Wallawas. Known for its well-preserved architecture and Old West charm, it was once a booming gold rush town. Today, Baker City offers a blend of outdoor adventure, rich history, and small-town charm, with attractions like the Oregon Trail Interpretive Center, vibrant art scene, and easy access to hiking, skiing, and scenic byways.





## **TYSON CLARKE**

**SENIOR VICE PRESIDENT | PARTNER**  
**TYSON@PAADVISORS.COM**

**360.319.4855**

