



±1 AC ASHEVILLE, NC

127 Acton Cir., Asheville, NC 28806

Property Summary



DAILY TRAFFIC CONDITIONS

TRAFFIC COUNT	DAILY TRAFFIC
COUNT	70,420
STREET	I-40
COUNT 2	26,942
STREET 2	Hwy. 23

DEMOGRAPHICS - 2025

DEMOGRAPHICS	1 MILE	3 MILE	5 MILE
Estimated Population	4,082	33,147	71,785
Average HH Income	\$90,264	\$95,833	\$92,994
Estimated Households	1,777	14,593	31,233

PROPERTY HIGHLIGHTS

- ±1 AC lot adjacent to The Home Depot with a traffic signal and easy access to I-40 and downtown Asheville
- Zoned Highway Business
- Great spot for medical office or professional services
- Area retailers include The Home Depot, Food Lion, AutoZone, Ingles, Lowe's, Walgreens, CVS, Ace Hardware, Planet Fitness, Northern Tool, Dollar General, and Dollar Tree
- Nearby hotels include Woodspring Suites, Holiday Inn, Fairfield Inn, Comfort Inn, Country Inn & Suites, Sleep Inn, and Asheville Inn
- Area dining includes Cracker Barrel, Chick-fil-A, IHOP, Sonic Drive-In, Pizza Hut, Hardees, Zaxby's, McDonald's, Burger King, Dunkin, Waffle House, Wendy's, Popeyes, Bojangles, and Starbucks
- Other nearby businesses include Wells Fargo, First Citizens Bank, Fields Chrysler- Jeep, Zips Car Wash, Enterprise Rent-A-Car, Speedway, Shell, BP, and Take 5

* Figures shown represent estimates



KEITH VALENTINE

678.718.1882

KValentine@retail-pa.com

JAMES MORGAN

828.365.8855

jmorgan@naibevery-hanks.com

NC #308343

Retail Property Advisors // 678.718.1880 // 2100 RiverEdge Pkwy. // Suite 1050, Atlanta, GA 30328 // Retail-PA.com

ATLANTA // TAMPA // PASADENA, CA // AUBURN // SARASOTA // BALTIMORE

No warranty or representation, expressed or implied, is made as to the accuracy of the information contained herein, and same is submitted subject to errors, omissions, change of price, rental or other conditions, withdrawal without notice, any special list conditions imposed by our Principals.



±1 AC ASHEVILLE, NC

127 Acton Cir., Asheville, NC 28806

Location Maps



RPA
RETAIL PROPERTY ADVISORS

NAI Beverly-Hanks
Commercial Real Estate Services, Worldwide.

KEITH VALENTINE
678.718.1882
KValentine@retail-pa.com

JAMES MORGAN
828.365.8855
jmorgan@naibeverly-hanks.com
NC #308343

Retail Property Advisors // 678.718.1880 // 2100 RiverEdge Pkwy. // Suite 1050, Atlanta, GA 30328 // Retail-PA.com

ATLANTA // TAMPA // PASADENA, CA // AUBURN // SARASOTA // BALTIMORE

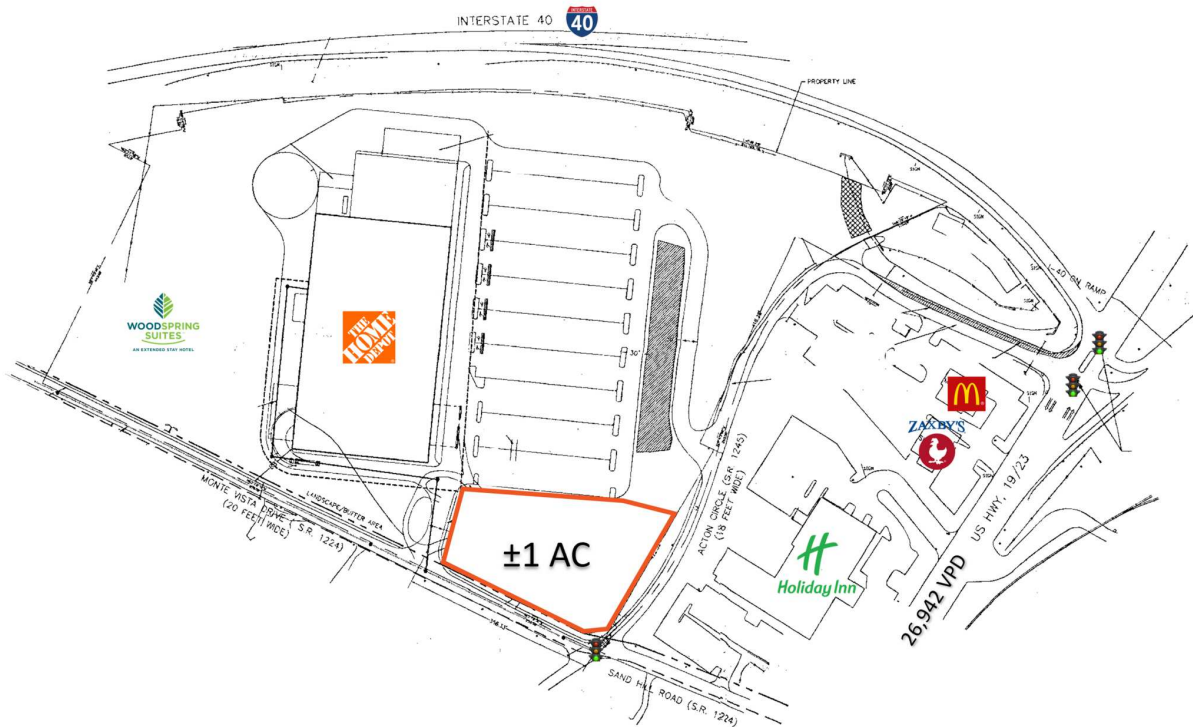
No warranty or representation, expressed or implied, is made as to the accuracy of the information contained herein, and same is submitted subject to errors, omissions, change of price, rental or other conditions, withdrawal without notice, any special list conditions imposed by our Principals.



±1 AC ASHEVILLE, NC

127 Acton Cir., Asheville, NC 28806

Site Plan



NAI Beverly-Hanks
Commercial Real Estate Services, Worldwide.

KEITH VALENTINE

678.718.1882

KValentine@retail-pa.com

JAMES MORGAN

828.365.8855

jmorgan@naibeverly-hanks.com

NC #308343

Retail Property Advisors // 678.718.1880 // 2100 RiverEdge Pkwy. // Suite 1050, Atlanta, GA 30328 // Retail-PA.com

ATLANTA // TAMPA // PASADENA, CA // AUBURN // SARASOTA // BALTIMORE

No warranty or representation, expressed or implied, is made as to the accuracy of the information contained herein, and same is submitted subject to errors, omissions, change of price, rental or other conditions, withdrawal without notice, any special list conditions imposed by our Principals.