

FROME INVESTMENTS

1139 & 1141 E. Chestnut Ave.

Santa Ana, California 92701



FEATURES INCLUDE:

- Upstairs Office Suite or Storage Space
- 1,022 sq. ft.
- Shared Hallway with Restrooms
- Private Offices
- Park-like Setting
- No CAM Fees
- Easy Access to 5 & 55 Freeways



FOR FURTHER INFORMATION:

714.641.1130

WWW.FROMEINC.COM

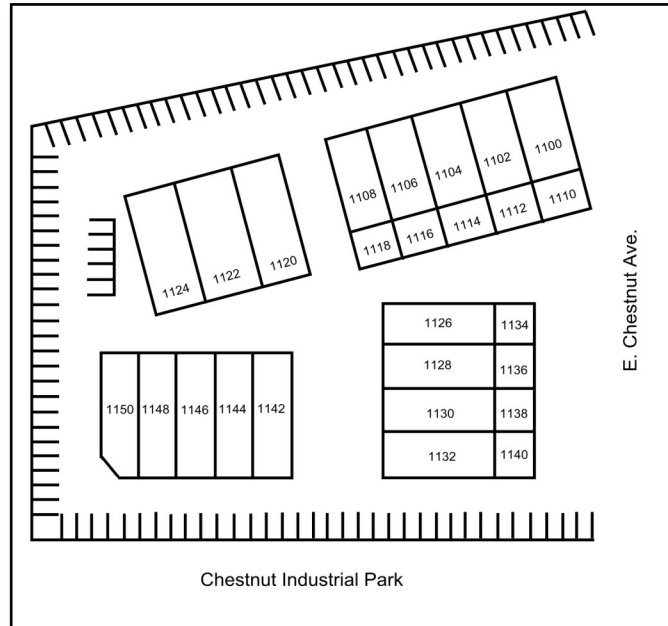


FROME INVESTMENTS

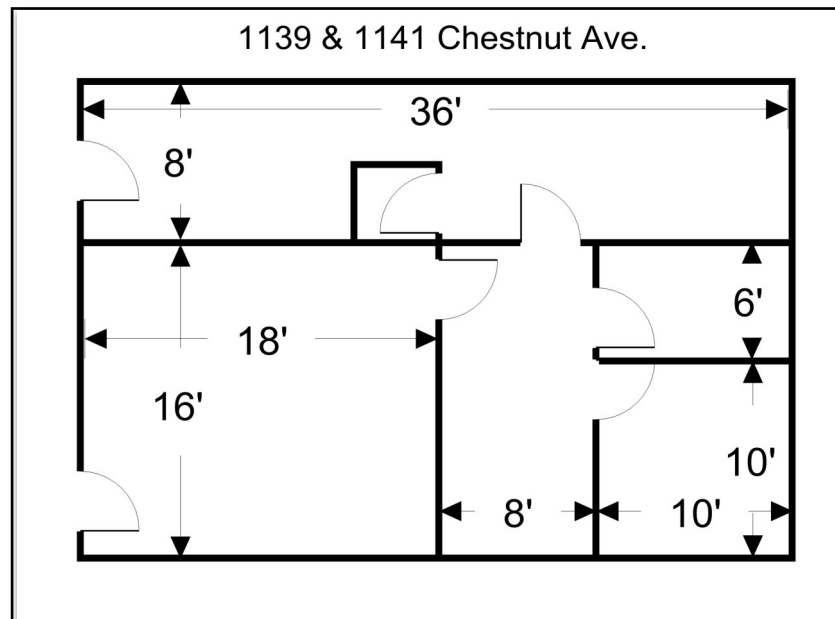
1139 & 1141 E. Chestnut Ave.

Santa Ana, California 92701

SITE PLAN



FLOOR PLAN



FOR FURTHER INFORMATION:

714.641.1130

WWW.FROMEINC.COM

