

# FOR LEASE

1641 Crain Hwy, Crofton, MD 21114



**Crofton Woods  
Shopping Center**

**Shane Denman**  
443-223-9937  
sdenman@hyattcommercial.com

**Judith Neighoff**  
410-260-6545  
jneighoff@hyattcommercial.com

## HIGHLIGHTS

- Zoned C1B
- 125 surface parking spaces available
- Professionally Managed
- Excellent signage opportunity
- Building Elevator
- Common area restrooms
- Extensive window line
- Other tenants in building include:  
Allstate, Carpet Plus, Crofton Liquors,  
Turnkey Title, and MD Primary Care  
Physicians

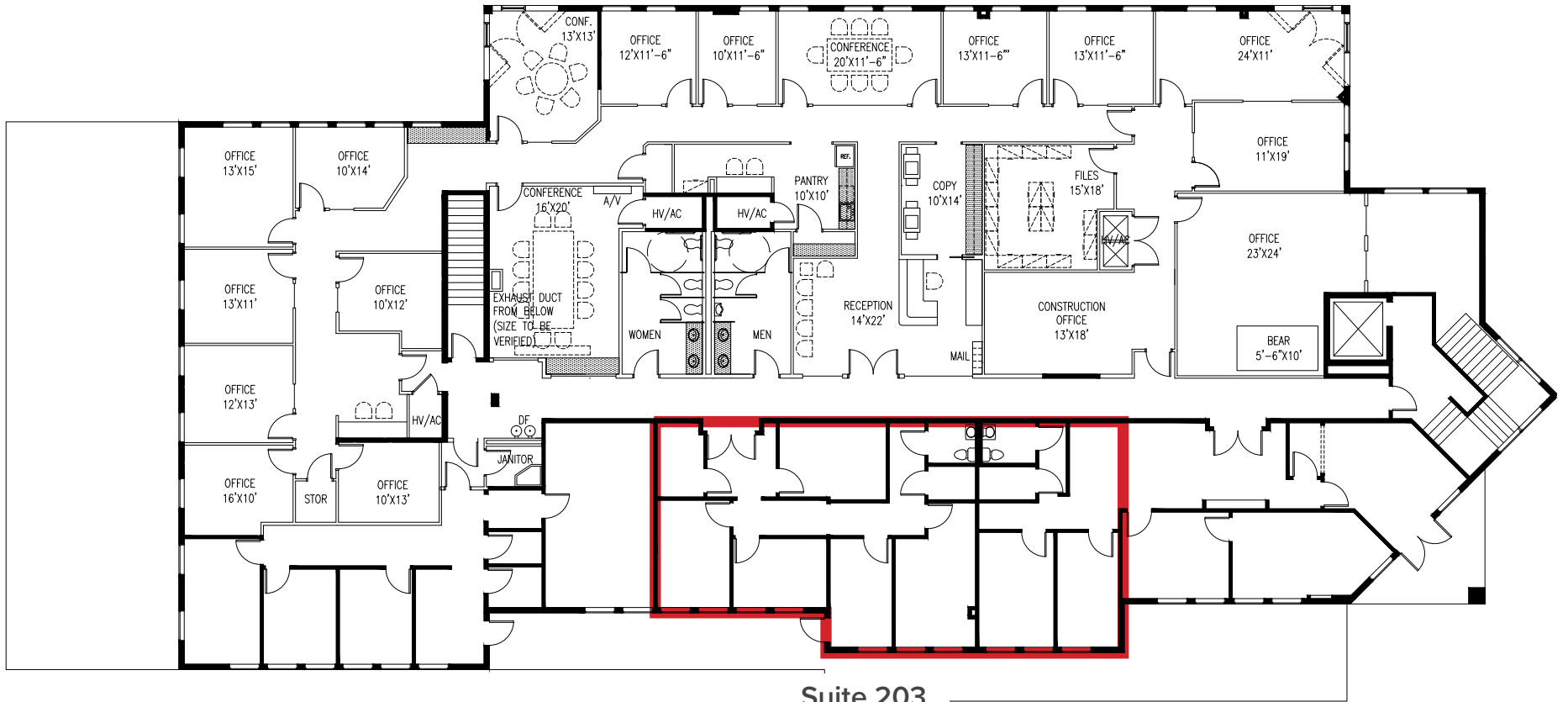
## OFFERING

## FOR LEASE SPACES

Suite 203 ----- ±1,643 SF



# FLOOR PLAN



Suite 203  
+/- 1,643 SF

**TARGET** **PNC**  
**petco** **BED BATH & BEYOND**  
 Beyond any store of its kind!  
**ULTA BEAUTY** **Wegmans**  
**OLD NAVY** **verizon**  
**QDOBA MEXICAN EATS** **T Mobile**  
**MEN'S WEARHOUSE**

**jiffy lube** **ROYAL FARMS** **Wendy's**  
 multicare Real Fresh. Real Fast.  
**TACO BELL** **Panda Express** **Auto Zone** **7 ELEVEN**  
**POPEYES** **FIVE GUYS**  
 BURGERS and FRIES



**Giant** **CVS pharmacy** **BANK OF AMERICA**  
**WESTERN UNION** **Krispy Kreme** **Chick-fil-A**

**JJ** **CARPET ONE**  
**Giant at home** **STARBUCKS** **GO FISH**  
 The Home & Hobby Superstore **DOLLAR TREE**



Crofton Elementary School

Crofton Middle School

Crofton Meadows Elementary

Crofton Woods Elementary School

Crofton High School

**CROFTON WOODS SHOPPING CENTER**

**COLD STONE CREAMERY** **POPEYES**  
**MATTRESS FIRM** **ROSS DRESS FOR LESS**  
**Giant** **IHOP** **TJ-MAXX**

**ALDI** **PAPA JOHN'S** **DOLLAR TREE**  
**DUNKIN'** **Planet Fitness** **Jersey Mike's**  
**Walgreens** **WESTERN UNION**

Samuel Ogle Middle School

Sacred Heart School-Religion



Washington DC  
22.1 miles / 43-minute drive

**BURGER KING** **BOLI'S**  
**Nonna & Angelas**

**DUNKIN'** **PAPA JOHN'S**  
**EASTERN SUBS**



**Harris Teeter** **TACO BELL**  
**Auto Zone** **Chick-fil-A**  
**FIREHOUSE SUBS** **CHASE**  
 FOUNDED BY FIREMEN **petco** **PNC**

**HYATT COMMERCIAL**  
 REAL ESTATE BROKER  
 THE RELIABLE GROUP

Baltimore Washington International Airport  
19 miles / 27-minute drive

Nantucket Elementary School

ANNAPOLIS RD

CRAIN HWY

DEFENSE HWY

