



FOR SUBLEASE

# 530 Pedricktown Road

BRIDGEPORT, NJ

## Area Available

48,000 SF

## Occupancy

30 to 60 days

## Year Built

1983

## Sublease Term

Through 12/31/26

## Property Type

Industrial

## Property Highlights

- 24' clear
- 8 loading docks
- 1 drive-in door
- Column spacing 40' x 40'
- Racking possibly available

*For information, please contact:*

### Kyle Eaton, SIOR

t 908-902-8354  
kyle.eaton@nrmk.com

### Rob Loderstedt

t 973-998-1093  
robert.loderstedt@nrmk.com

### Haylee McCabe

t 609-276-5034  
haylee.mccabe@nrmk.com

### Connor Montagano

t 856-334-2124  
connor.montagano@nrmk.com

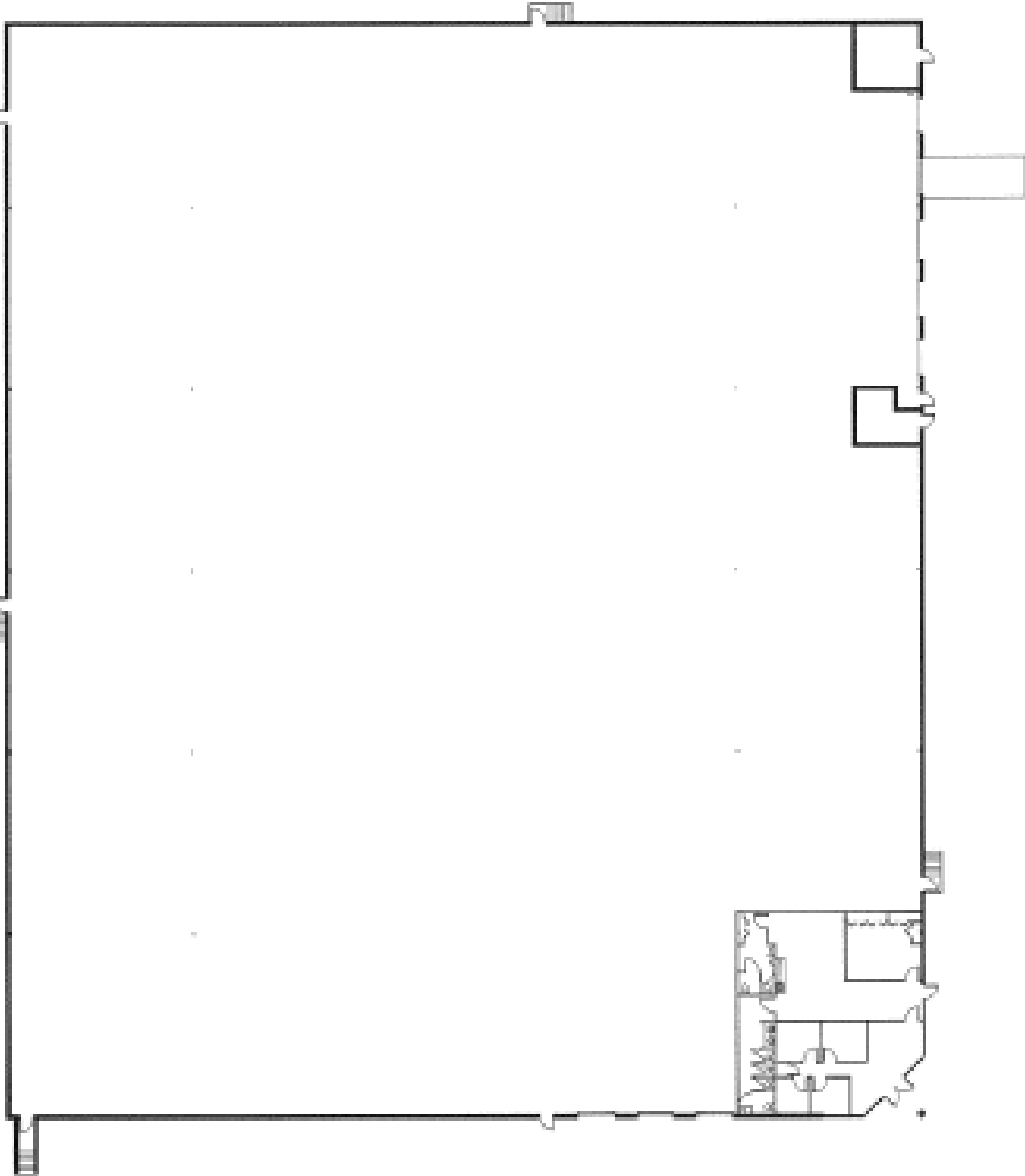
# NEWMARK

1 Tower Center Boulevard, Suite 1201, East Brunswick, NJ 08816

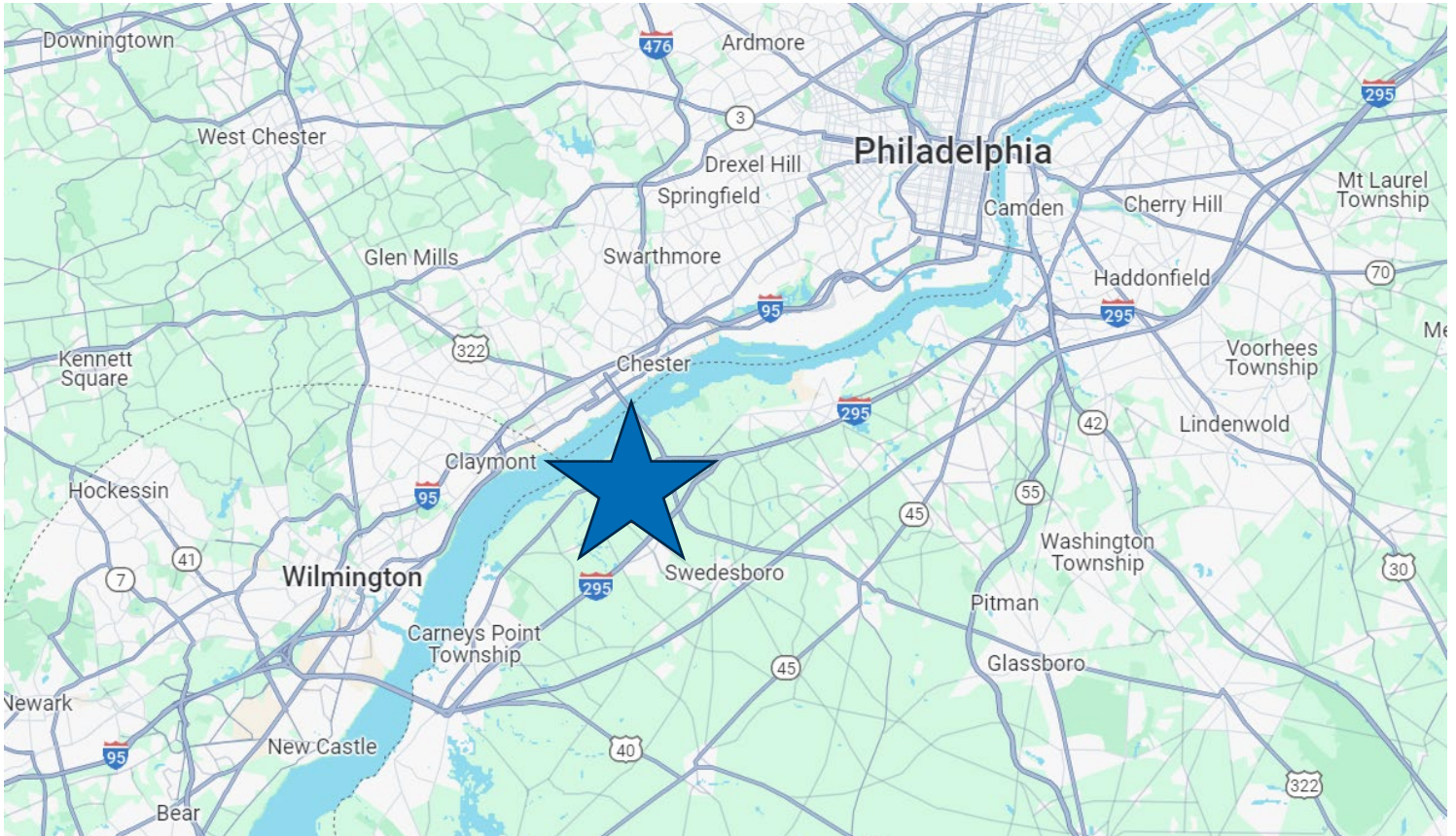
The information contained herein has been obtained from sources deemed reliable but has not been verified and no guarantee, warranty or representation, either express or implied, is made with respect to such information. Terms of sale or lease and availability are subject to change or withdrawal without notice.

---

# 530 Pedricktown Road



# 530 Pedricktown Road



*For information, please contact:*

**Kyle Eaton, SIOR**  
t 908-902-8354  
kyle.eaton@nmrk.com

**Rob Loderstedt**  
t 973-998-1093  
robert.loderstedt@nmrk.com

**Haylee McCabe**  
t 609-276-5034  
haylee.mccabe@nmrk.com

**Connor Montagano**  
t 856-334-2124  
connor.montagano@nmrk.com