

# HonorHealth Tempe Medical Center

MEDICAL OFFICE BUILDING FOR LEASE

1492 South Mill Avenue, Tempe, AZ 85281

HONORHEALTH









## HOSPITALS

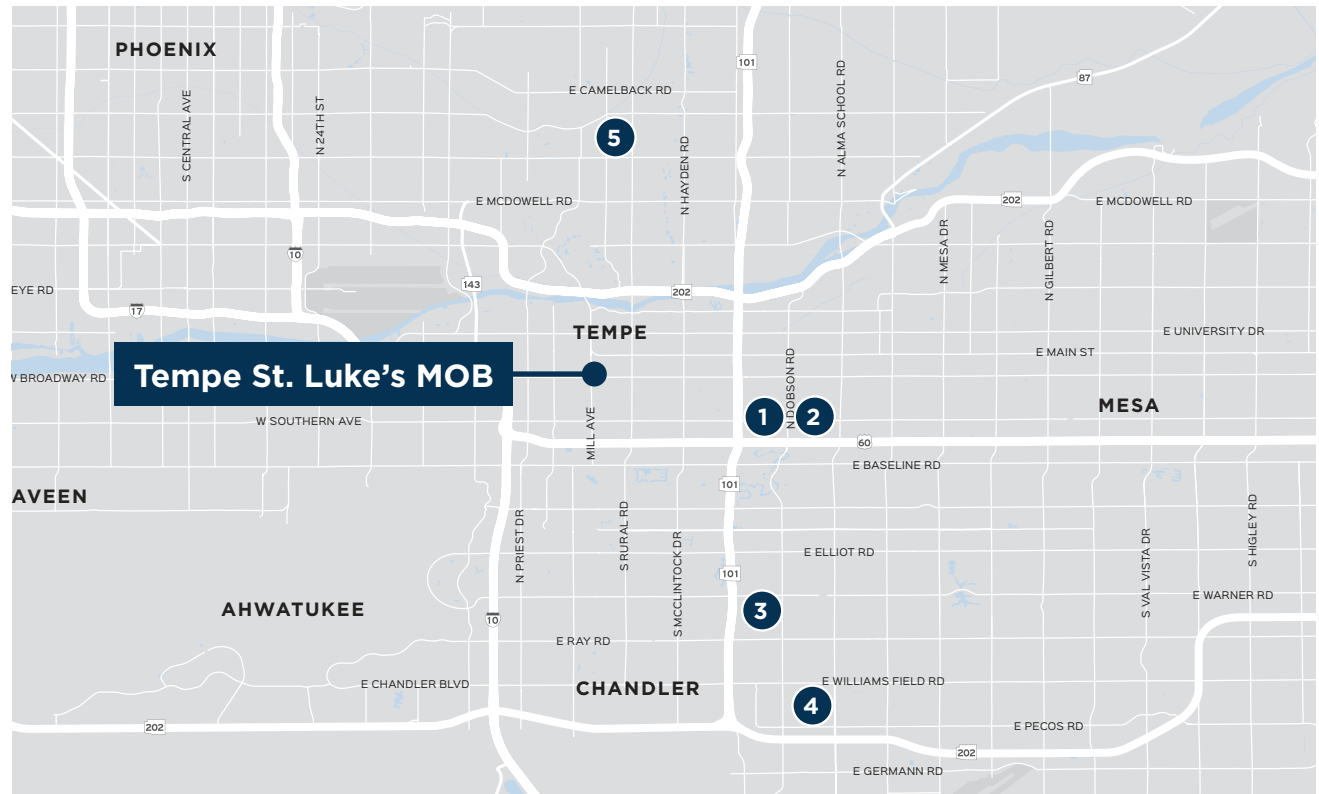
- 1 Banner Desert Medical Center
- 2 Banner Children at Desert
- 3 Dignity Health AZ Specialty Hospital
- 4 Dignity Chandler Regional Hospital
- 5 Honor Health Scottsdale Osborn

## RETAIL

- 1 Tempe Marketplace
- 2 Whole Foods

## ENTERTAINMENT

- 1 ASU Arts Musuem
- 2 ASU Gammage Theater
- 3 Dave & Buster's
- 4 Desert Financial Arena
- 5 Harkins Theatres Valley Art
- 6 Harkins Theatres
- 7 Sun Devil Stadium
- 8 Tempe Center for the Arts



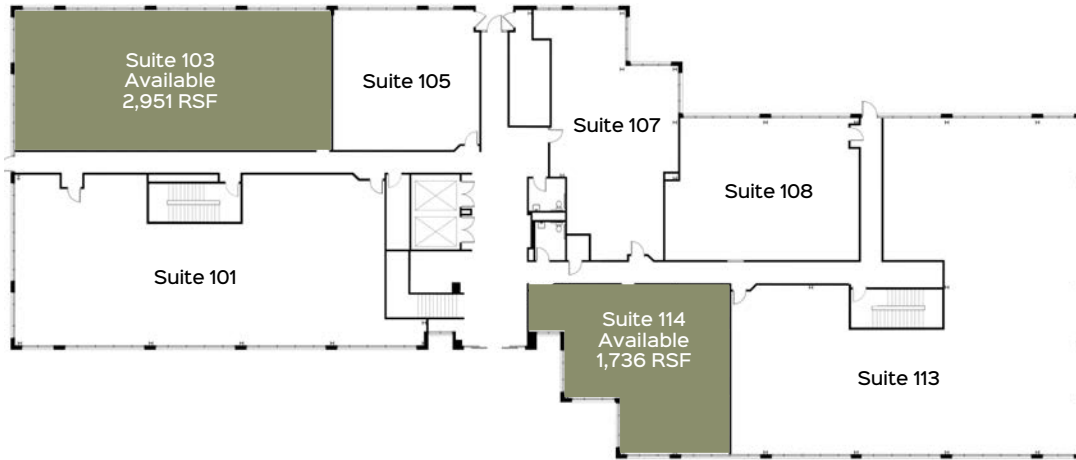
## FOOD AND BEVERAGE

- 1 Boulders on Broadway
- 2 Blaze Pizza
- 3 Cartel Coffee Lab
- 4 Casey Moore's Oyster House
- 5 Chipotle Mexican Grill
- 6 Dutch Bros Coffee
- 7 King Coffee
- 8 Oregano's
- 9 Original ChopShop
- 10 Pedal Hous Brewery
- 11 Perfect Pear Bistro
- 12 Pita Jungle

## MIXED USE DEVELOPMENT

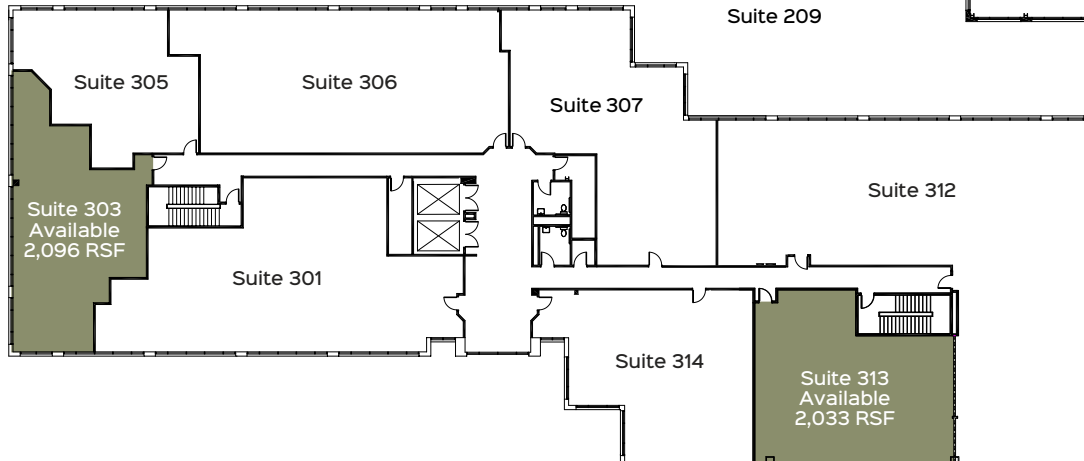
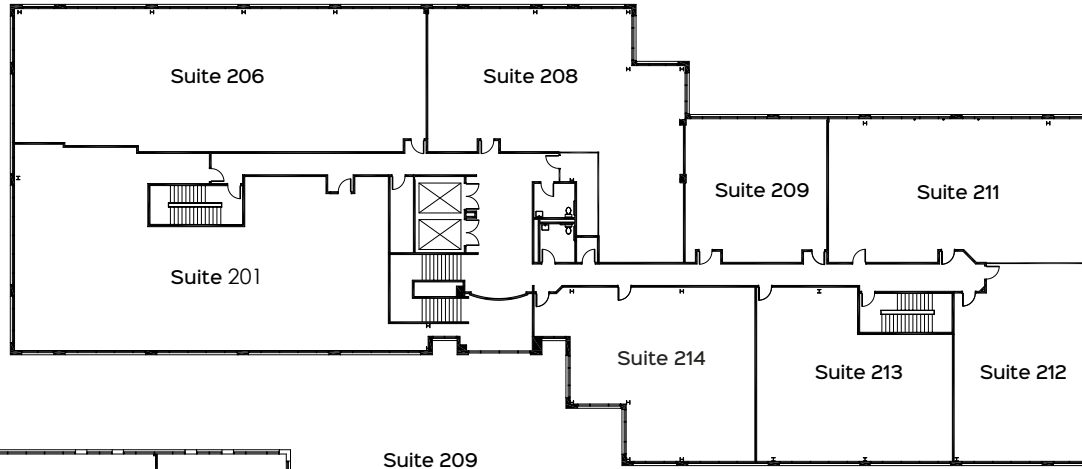
- 1 Hayden Ferry Lakeside
- 2 Hayden Flour Mill
- 3 Marina Heights
- 4 Novus Innovation Corridor
- 5 One Hundred Mill
- 6 Tempe Gateway
- 7 The Collective
- 8 The Watermark
- 9 University Square
- 10 West 6th Apartments





## FIRST FLOOR

## SECOND FLOOR



## THIRD FLOOR

### PROJECT FEATURES

- ⌘ ±59,808 SF Class A, 3-story MOB
- ⌘ Located on HonorHealth's Tempe St. Luke's Hospital campus, an 87-bed full-service hospital offering a wide array of services including:
  - : Diagnostic Imaging
  - : Cardiovascular Care
  - : Orthopedic Services
  - : Women's Care
- ⌘ Strong Ownership
- ⌘ Several restaurants, shopping and retail amenities in the immediate area
- ⌘ Next to ASU Tempe Campus
- ⌘ Excellent Tenant Mix

### PROJECT SPECIFICATIONS

#### ⌘ AVAILABILITY

- : Suite 103 2,951 RSF
- : Suite 114 1,736 RSF
- : Suite 303 1,710 RSF
- : Suite 313 2,033 RSF

⌘ **LEASE RATE** \$21.50/SF, NNN

⌘ **TI's** Generous TI's subject to existing conditions

⌘ Hospital privileges not required. Restriction for medical only.

# HonorHealth Tempe Medical Center

## MEDICAL OFFICE BUILDING FOR LEASE

1492 South Mill Avenue, Tempe, AZ 85281



DEMOGRAPHICS	1 Mile	3 Miles	5 Miles
Total households	4,747	43,674	114,073
Total population	16,232	114,875	286,290
Population white	81.0%	78.4%	77.2%
Population black	3.3%	4.6%	6.1%
Population Hispanic	17.5%	22.8%	27.0%
Population Asian	5.0%	6.8%	4.8%
Population Pacific Islander	0.5%	0.3%	0.4%
Population American Indian	4.3%	4.2%	4.0%
Population other	2.2%	2.9%	4.1%
Persons per household	3.4	2.6	2.5
Average household income	\$59,161	\$51,354	\$57,096
Average house value	\$250,034	\$245,559	\$252,102
Average age	25.5	26.9	30.7
Average age male	25.2	26.7	30.2
Average age female	25.5	27.1	31.2

2020 American Community Survey (ACS)

### FOR MORE INFORMATION:

**MARGARET LLOYD**  
Senior Vice President  
623.344.4558 direct  
602.828.7214 cell  
[margaret.lloyd@theplazaco.com](mailto:margaret.lloyd@theplazaco.com)

**MIKE MCWILLIAMS**  
Leasing Associate  
623.344.4530 direct  
602.803.9029 cell  
[michael.mcwilliams@theplazaco.com](mailto:michael.mcwilliams@theplazaco.com)

Copyright © 2024 Plaza Companies. All rights reserved. The information above has been obtained from sources believed reliable. While we do not doubt its accuracy, we make no guarantee, warranty, or representation about it. It is your responsibility to confirm accuracy and completeness. Any projections, opinions, assumptions, or estimates are used for example only and do not represent the current or future performance of the property. The value of this transaction to you depends on tax and other factors which should be evaluated by your tax, financial and legal advisors. You and your advisors should conduct a careful independent investigation of the property to determine to your satisfaction, the suitability of the property for your needs.