



8.07 ACRE M-2 ZONED INDUSTRIAL LAND

00 EVANS TO LOCK, EVANS, GA 30809



SITE OPTIONS

Options	Size	Availability	Ideal Use
Land Sale	8.07 Acres	For Sale	Industrial
Build-To-Suit	80,000 SF	For Lease	Industrial

OFFERING MEMORANDUM

8.07 ACRE INDUSTRIAL LAND SITE
EVANS INDUSTRIAL PARK INDUSTRIAL OPPORTUNITY
OWNERS HAVE THE ABILITY TO BUILD-TO-SUIT FOR TENANT



OFFERING MEMORANDUM TABLE OF CONTENTS

SECTION EXECUTIVE SUMMARY
01

SECTION SITE MAPS
02

SECTION AREA OVERVIEW
03

Please submit all offers as a non-binding letter of intent (LOI). Including:

- Lease Rate
- Lease Term
- Lease Guarantor
- Special Stipulations

TEAM LEAD



JONATHAN ACEVES

VICE PRESIDENT, CCIM,MBA
706-294-1757
JACEVES@FINEMGROUP.COM



JOHN ECKLEY

VICE PRESIDENT, CCIM,MBA
706-214-2937
JECKLEY@FINEMGROUP.COM



DUSTIN WRIGHT

ASSOCIATE BROKER
706-830-8266
DWRIGHT@FINEMGROUP.COM

BROKERAGE SUPPORT STAFF



STEPHEN LONG

SENIOR INVESTMENT ANALYST
706-513-3840
SLONG@FINEMGROUP.COM



KEVIN CROW

INVESTMENT ANALYST
706-840-2198
KCRAW@FINEMGROUP.COM



ABI-GRACE WILLIS

OPERATIONS DIRECTOR
706-832-4616
AWILLIS@FINEMGROUP.COM



EXECUTIVE SUMMARY



**8.07 ACRE
INDUSTRIAL LAND**



INDUSTRIAL OPPORTUNITY

WHY THIS SITE?



LAND SIZE

8.07 Acres



BUILD-TO-SUIT BUILDING

Potential 80K Sqft Building



ZONING

M-2 (Heavy Industrial)



STRONG SYNERGY

Established Industrial Corridor



STRONG DEMOGRAPHICS

\$111K Income in 3 Mile Radius



SECURITY GATE

Shared Gated Entrance



ACCESS

Shared Full Motion Access

OFFERING OVERVIEW

The Finem Group at Meybohm Commercial is pleased to exclusively present 00 Evans to Locks Road in Evans, Georgia — a ±8.06-acre industrial parcel zoned M-2, available for sale or lease as a build-to-suit opportunity. The site could potentially support up to ±80,000 square feet of industrial space and is suitable for manufacturing, distribution, or warehouse users. With utilities in place, flat topography, no wetlands, and no known easements, the parcel offers immediate development potential for owner-users, build-to-suit tenants, or developers targeting a high-demand corridor.

Located within Columbia County's established industrial node, the property is adjacent to a ±652,000-square-foot industrial facility that serves as RecTeq's national headquarters. The site shares direct access to Evans to Locks Road and sits just 0.7 miles from Washington Road, 1.9 miles from Fury's Ferry Road, and 4.3 miles from I-20 — providing efficient linkage to the CSRA, Augusta's industrial core, and major Southeastern logistics routes. Industrial land with M-2 zoning is increasingly scarce in the region, making this a compelling option for users needing buildable acreage in a proven, accessible location.

LOCATION OVERVIEW

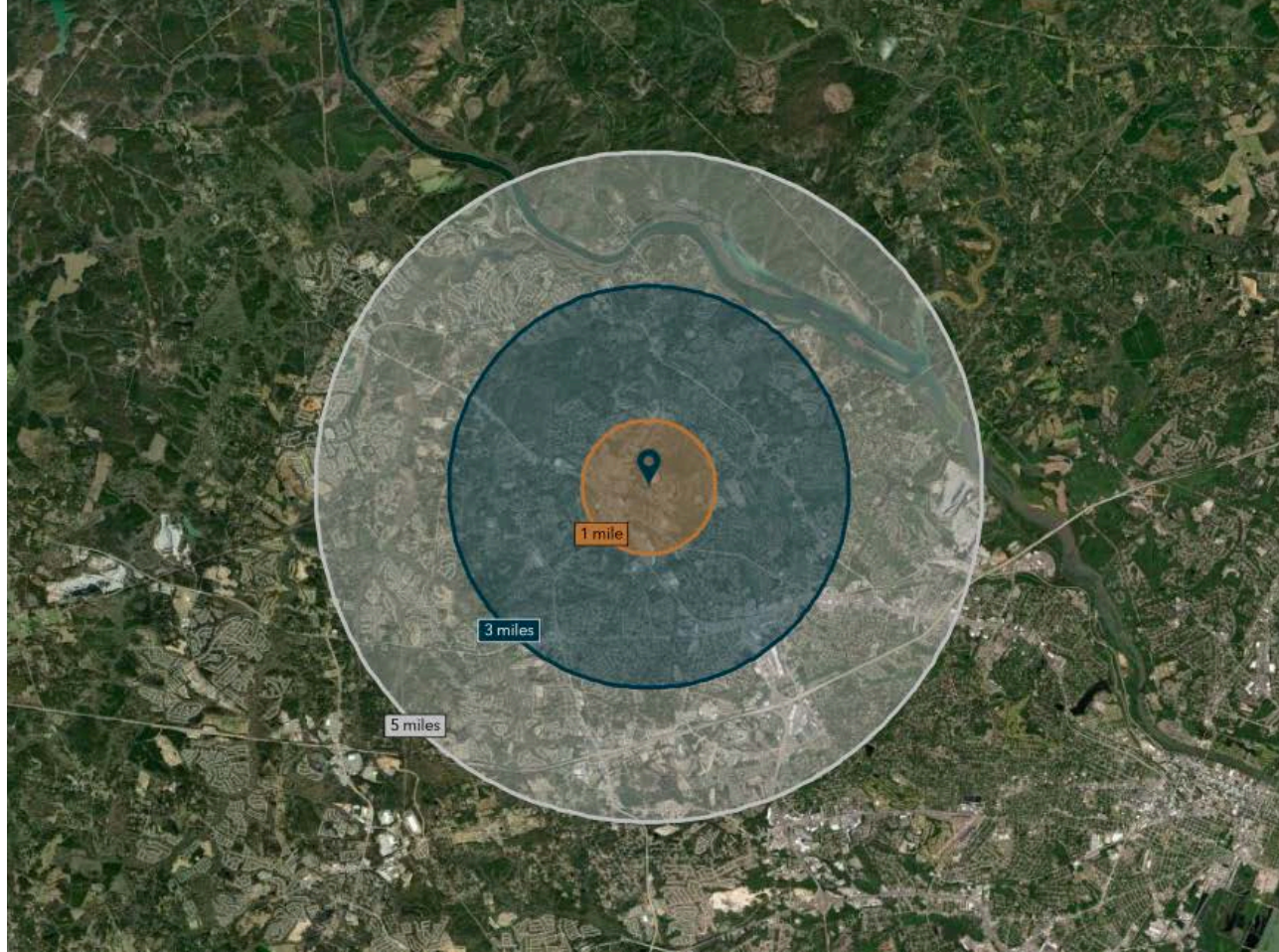
HIGH TRAFFIC TRADE AREA



NOTABLE FEATURES

WITHIN A 10 MIN DRIVE TIME

Washington Road	0.7 Miles
Riverwatch Parkway	0.9 Miles
Downtown Evans	1.0 Miles
Walmart	1.6 Miles
Mullins Crossing	1.9 Miles
Westlake Golf Course & Neighborhood	2.8 Miles
I-20	4.3 Miles
Downtown Augusta	10.8 Miles



Demographics	1 Mile	3 Mile	5 Mile
Population	4,460	55,351	123,114
Median HH Income	\$99,219	\$102,399	\$93,755
2020-2025 Growth	16.02%	8.96%	7.49%
Households	1,806	20,539	47,768





Lakeside High School



Evans Trade Center

Studio 285

Hayden's International Gymnastics

Blair Construction

8.07 ACRE INDUSTRIAL LAND



Evans Animal Hospital

Mish Mash Interiors





Publix



TACO BELL



THE HOME DEPOT

Walgreens



LOWE'S



GOLD'S GYM

Evans Towne Center Park

Waffle House

Power Products

Kirkland's FLOORING

The Pumping Station

Evans Animal Hospital

Mish Mash Interiors

ballroom SOUTHEAST OFFICE CENTER

gerber COLLISION & GLASS

Blair Construction

Hayden's International Gymnastics

8.07 ACRE INDUSTRIAL LAND





HOWARD LUMBER CO

Evans Trade Center

General Fasteners Company

JA Discovery Center of the CSRA

Club Car

Riverwatch Parkway

Hayden's International Gymnastics

Blair Construction

gerber COLLISION & GLASS



TARGET

Marshalls

KOHL'S

belk

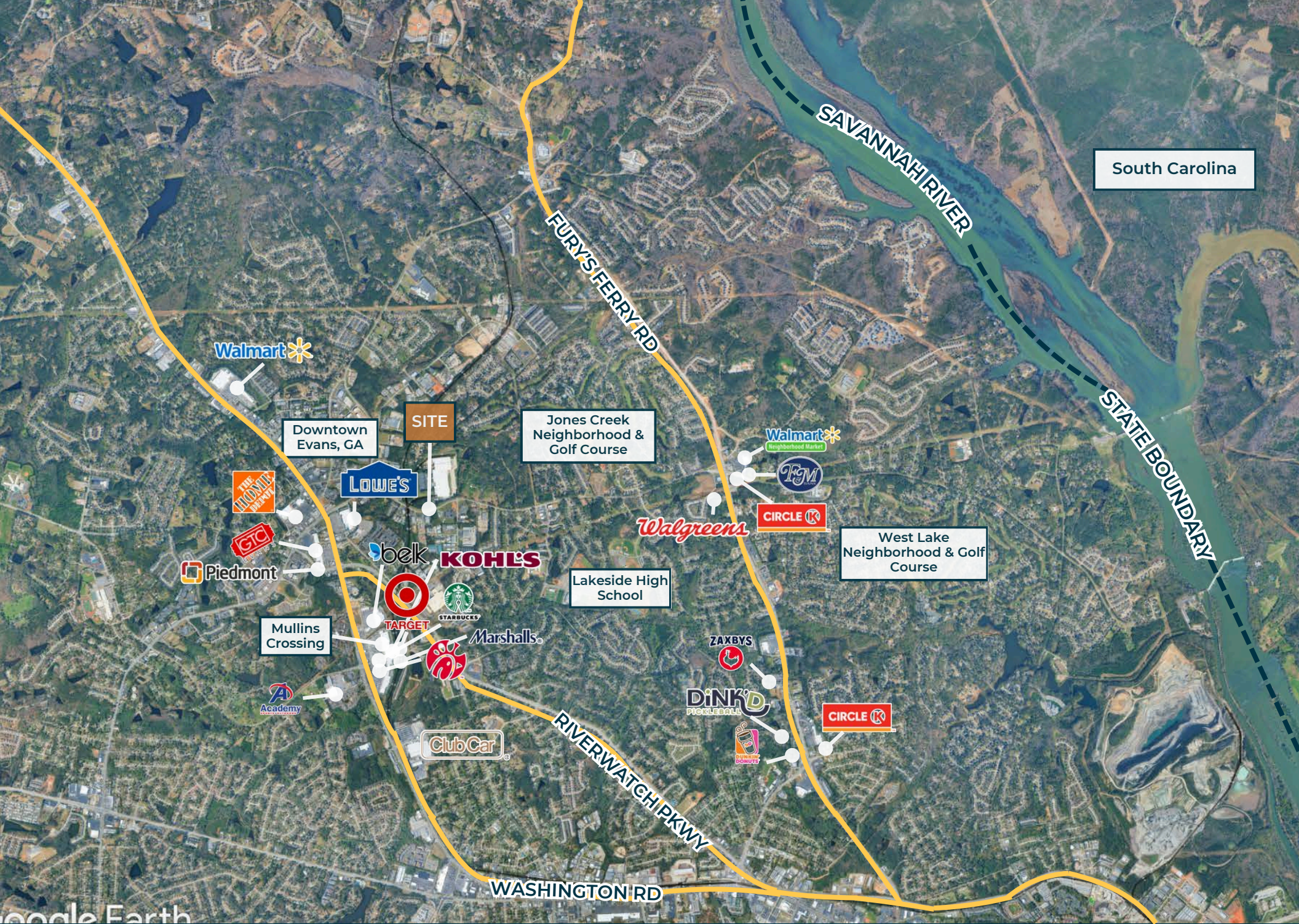
Mullins Crossing

ballroom BOUNCE CENTER

SOUTHEAST PHOTOGRAPHY

Power Products





South Carolina

SAVANNAH RIVER

STATE BOUNDARY

FURYS FERRY RD

RIVERWATCH PKWY

WASHINGTON RD

Walmart*

Downtown Evans, GA

SITE

Jones Creek Neighborhood & Golf Course

Walmart* Neighborhood Market

F&M

CIRCLE K

Walgreens

West Lake Neighborhood & Golf Course

THE HOME DEPOT

LOWE'S

Piedmont

bek

KOHL'S

Lakeside High School

Mullins Crossing

TARGET

STARBUCKS

Marshalls

ZAXBYS

DINK'D PICKLEBALL

DUNKIN' DONUTS

CIRCLE K

Academy

ClubCar

people Earth

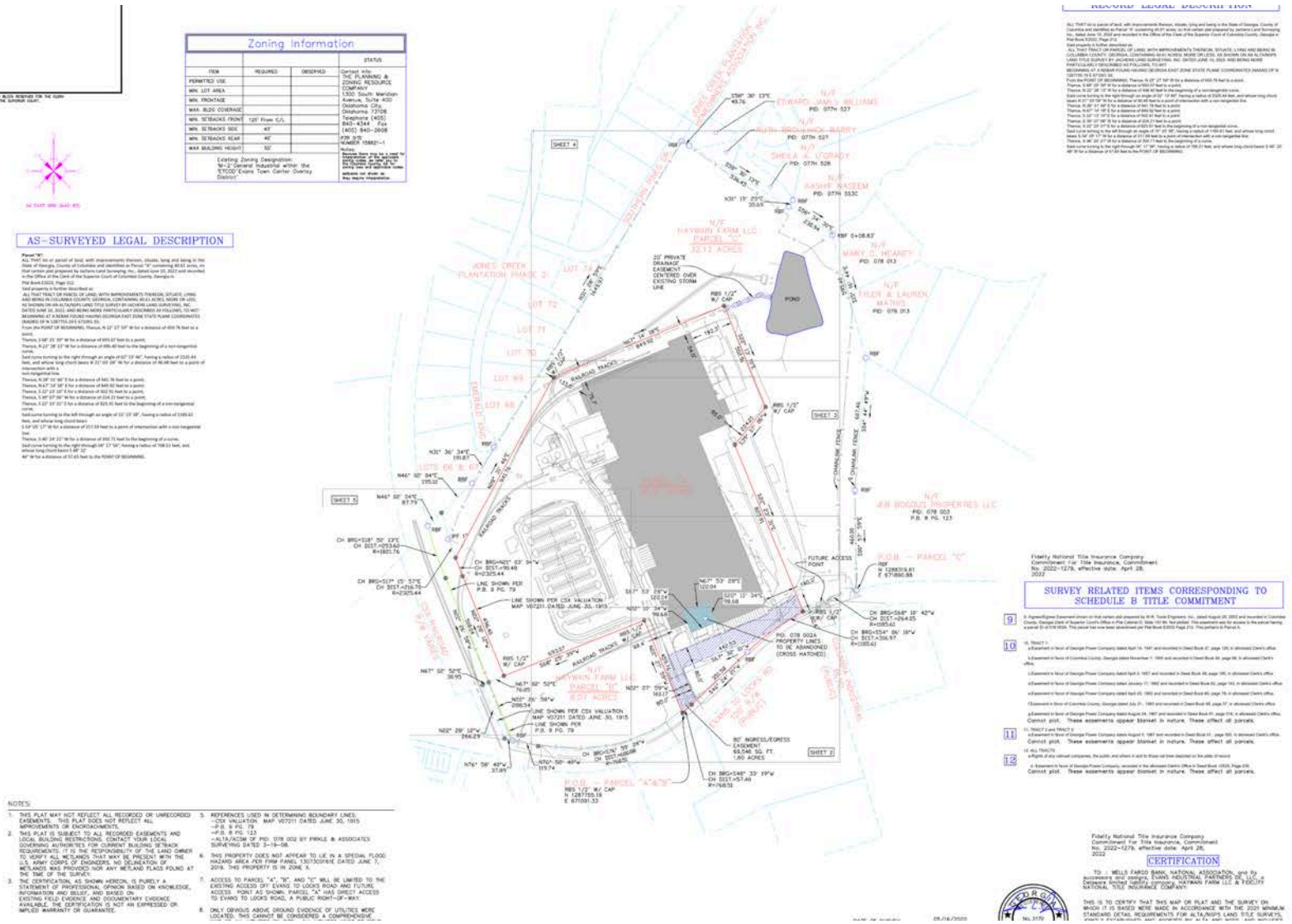




**8.07 ACRE
INDUSTRIAL LAND**



8.07 ACRE INDUSTRIAL LAND SITE PLAN



PROPERTY MAP NOT TO SCALE

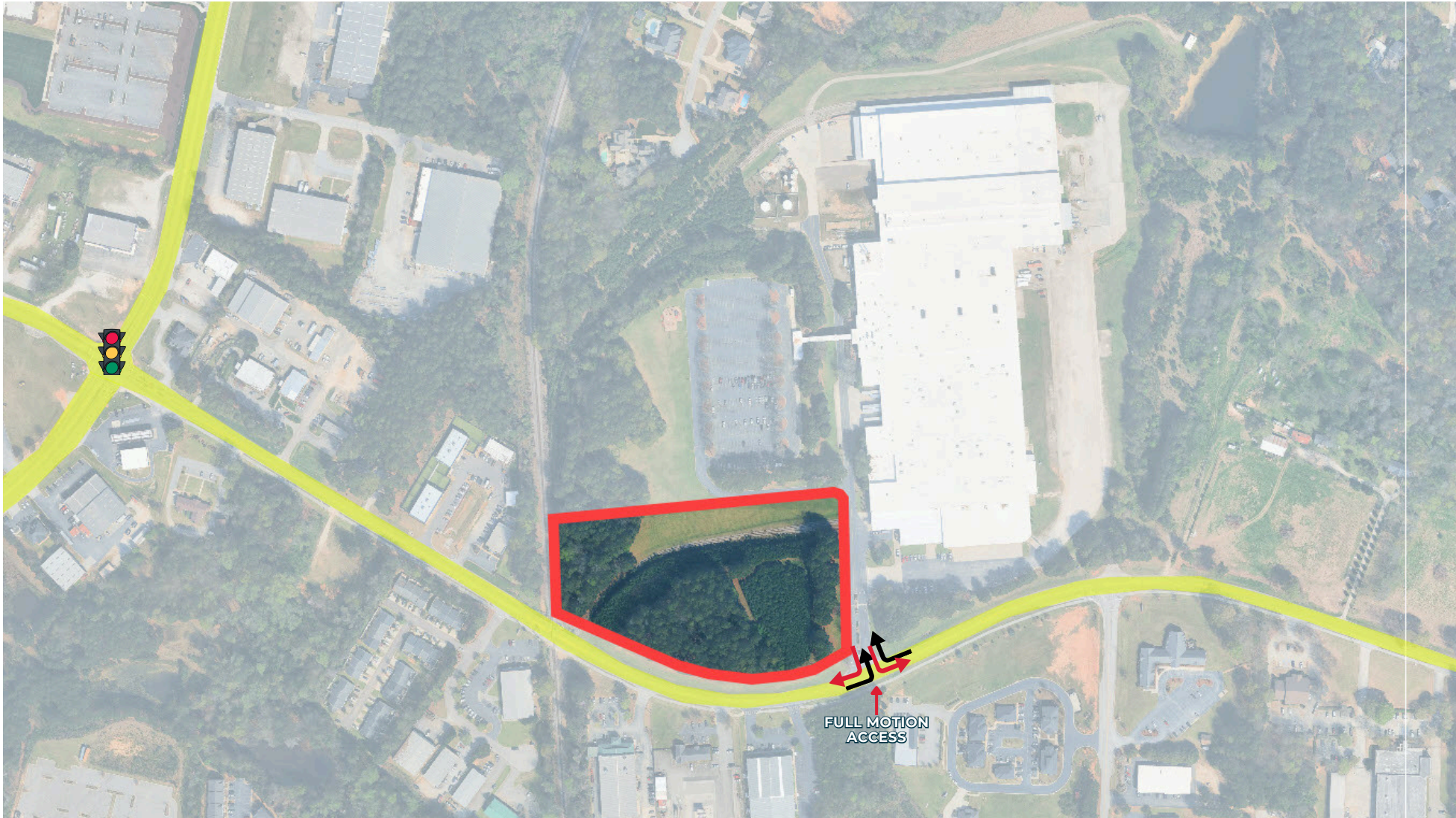
REF	REBAR FOUND
REF	REBAR SET
REF	IRON PIPE FOUND
REF	CONCRETE MONUMENT FOUND
REF	SEWER MANHOLE
REF	STORM MANHOLE
REF	GRATE INLET
REF	JUNCTION BOX
REF	POWER POLE
REF	LIGHT POLE
REF	ELECTRICAL TRANSFORMER FIBER
REF	FULL BOX
REF	GREASE TRAP MANHOLE
REF	CLEANOUT
REF	HYDRANT
REF	WATER VALVE
REF	WATER METER
REF	GAS VALVE
REF	HANDICAP PARKING
REF	USPS DROP BOX
REF	BOLLARD
REF	FENCE LINE
REF	STORM SEWER LINE
REF	SANITARY SEWER LINE

AN ALTA/PLANS LAND TITLE SURVEY OF
PARCEL "A" - 40.61 ACRES
4301 EVANS TO LOCKS RD, EVANS, GA 30809
PD: 078 602
COLUMBIA COUNTY, GEORGIA
PREPARED FOR
HAYWAIN FARM, LLC

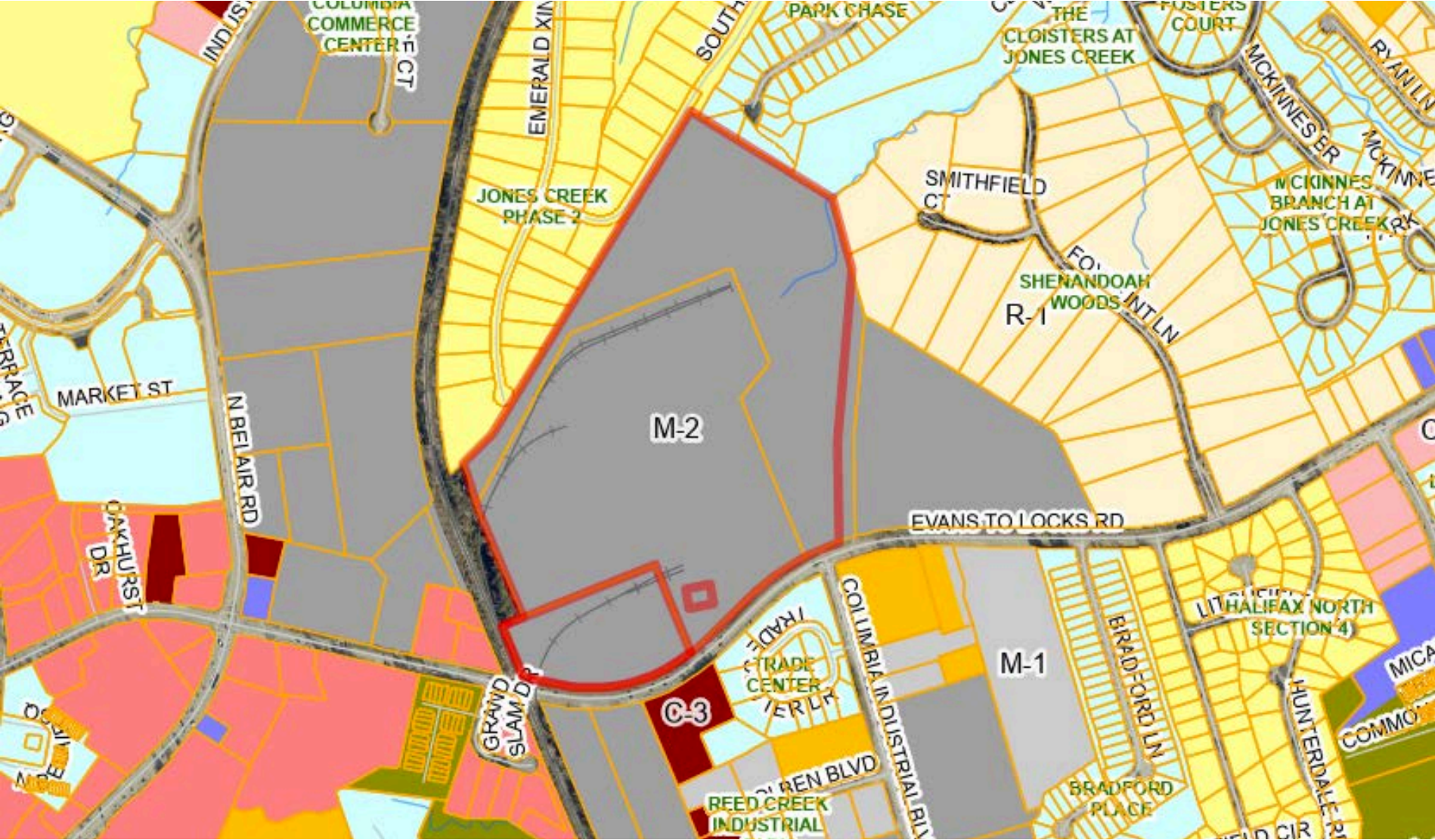
JACOBIENS
LAND SURVEYING, INC.
Professional Land Surveying #126-VA199-0009
P.O. BOX 18
EVANS, GA 30809
PH: 706.399.8721
EMAIL: djacobiens@jacobien.com
WWW.JACOBIENS-LS.COM
CDAP: USFO0036

8.07 ACRE INDUSTRIAL LAND

ACCESS MAP



8.07 ACRE INDUSTRIAL LAND ZONING MAP



8.07 ACRE INDUSTRIAL LAND UTILITIES MAP





AREA OVERVIEW



**8.07 ACRE
INDUSTRIAL LAND**



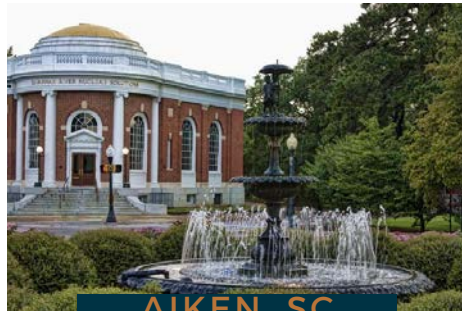
WHY? THE CSRA

OVERVIEW

The Central Savannah River Area (CSRA) which includes Augusta, GA, Aiken, SC and more, is in a perfect phase for business. Right-sized, ideally strategically located, with a backbone of education, medical, and military pumping out a solid labor force, the city has become a beacon for companies to set up shop. **Infrastructure, labor force, cost of living, location, education, industry- they are all leading companies large and small to the CSRA.**



AUGUSTA, GA



AIKEN, SC

HOME OF THE AUGUSTA NATIONAL

Year after year during the first full week of April, golf fans descend on Augusta by the thousands. The annual event marks a boom for the local economy with over 200,000 average attendees. Augusta is known as the golf capital of the universe for good reason, and the love of golf extends well beyond the confines of Augusta National. It attracts politicians, athletes, musicians, Corporate CEOs, and many more which brings some of the world's most powerful people all in the same week to Augusta, GA.



MASTERS



A WELL CONNECTED CITY

Few places are as ideally located as The CSRA. It sits on I-20 between Atlanta (eastbound) and Columbia (westbound), with every major artery of Southeastern Interstate within easy reach, especially I-95 and I-77.

Augusta is less than 150 miles from the Ports of Savannah and Charleston.

Augusta's regional airport has direct flights to Atlanta, Charlotte, Washington DC, and Dallas.



CYBER CITY

The CSRA has long been a hotbed for the tech- and cyber-related companies such as Unisys, ADP, and Raytheon. Now, Augusta is home to the US Cyber Command at Fort Gordon and the newly completed Georgia Cyber Center, a \$100 million investment and the largest government cybersecurity facility in the United States.

U.S. Army Cyber Command (ARCYBER) is the Army headquarters beneath United States Cyber Command.



HEALTHCARE

Augusta University is Georgia's health sciences university, offering resources and services for those throughout the state and beyond. It features the Medical College of Georgia, the Dental College of Georgia, and a highly sought-after nursing program.

There are 12 total Hospitals in the area with a brand new one being constructed.

Doctor's Hospital in Augusta is the largest burn center in the United States and the third largest in the world.



LOW HOUSING COSTS

One of the biggest jewels in the CSRA is our low housing cost. Here, a broad variety of options are available, encompassing everything from new TND neighborhoods to established communities of antebellum and craftsman style homes.

Our market is more than 50% less than the national average, complementing the low cost of living and doing business in Augusta.

2nd

Most Populated MSA in GA

611K

CSRA Population

270K

CSRA Labor Force

5.7%

Percentage Unemployed

13K

Projected Job Growth in Next 5 Years

27K

Projected Population Growth in Next the 5 Years

WHY? GEORGIA

KEY DRIVERS

By 2050 Georgia's Population is projected to increase by nearly 2.5 Million people and Georgia's workforce is expected to grow by 3.1 million jobs. This incredible growth puts increased demands on Georgia's freight and logistics infrastructure which transports personal goods for families, raw materials to Georgia businesses, and moves products across the state and nation



Annual Georgia Freight Tonnage will increase 91% by 2050



Congestion costs for Georgia based traffic are projected to increase more than 100% by 2050



Manufacturing is expected to grow by 77% by 2050



Agriculture is expected to grow by 43% by 2050



Distribution freight flows are expected to more than triple from 2019 to 2050

TOP 10 STATES

1. Georgia
2. Indiana
3. Texas
4. North Carolina
5. South Carolina
6. Ohio
7. Michigan
8. Kentucky
9. Illinois
10. Louisiana

Site Selection Magazine's most annual Site Selectors Survey is out as of this past January, and the prospects for GA and the greater Southeast continue to shine!

Key stats for GA as follows:

- Top State Business Climate: GA#3
- Best Manufacturing Workforce States: GA#4
- Best States for Manufacturing: GA#3

Other items of interest:

- Atlanta ranked as #2 city for HQ Projects behind Dallas
- U.S. #1 for International Investment
- Most important factors for location (in order): Tax Policy, Workforce, Incentives and Quality of Life

Per Site Selection



ECONOMIC OVERVIEW

Georgia's Population is robust, making it the 8th most populous state with the majority of Georgians in prime working ages, 25-44 Years Old.

By 2050, the State is projected to Grow to 13,390,283, an increase of nearly 2.5 Million.

The state has experienced strong economic growth evidenced by being ranked 11th for GDP growth and Georgia continues to be ranked 8th nationally for its tax burden keeping the state competitive.



ECONOMIC COMPETITIVENESS

Georgia ranks highly on various metrics related to the creation of new businesses in the state, which is a strong indicator of a dynamic economy.

The state ranks 6th nationally for net new businesses created and 3rd in the percentage of adults becoming entrepreneurs each month.

Georgia ranks 8th for change in capital invested over the last 5 years indication the attraction of investment and innovation.



FUTURE OF TALENT

The state ranks 7th in terms of job growth of non-agriculture employment, ahead of most southern states.

Georgia continues to be a leader in job growth.

Georgia ranks 14th in the growth of high-tech employment and ranks 11th for the number of STEM doctorates. These are important indicators of a strong talent base



INFRASTRUCTURE OF THE FUTURE

The State's Logistics infrastructure continues to be a significant strength. Monthly TEU throughput in the port of Savannah has increased by 90% over the last decade.

Georgia ranks 4th in terms of growth in jobs in the warehouse sector over the last 5 years.

11M
Total State
Population

61%
Labor Force
Participation

268K
Jobs Created
Last 5 Years

134B
Invested in GA
in Last 5 Years

13M
2050 Projected
State Pop.

90%
Growth in Trade at
Port of Savannah
Over the Last Decade

**For inquiries,
contact us.**



www.finemgroup.com
dwright@finemgroup.com
706.214.2922



DUSTIN WRIGHT
ASSOCIATE BROKER
DRWIGHT@FINEMGROUP.COM
706.214.2922