



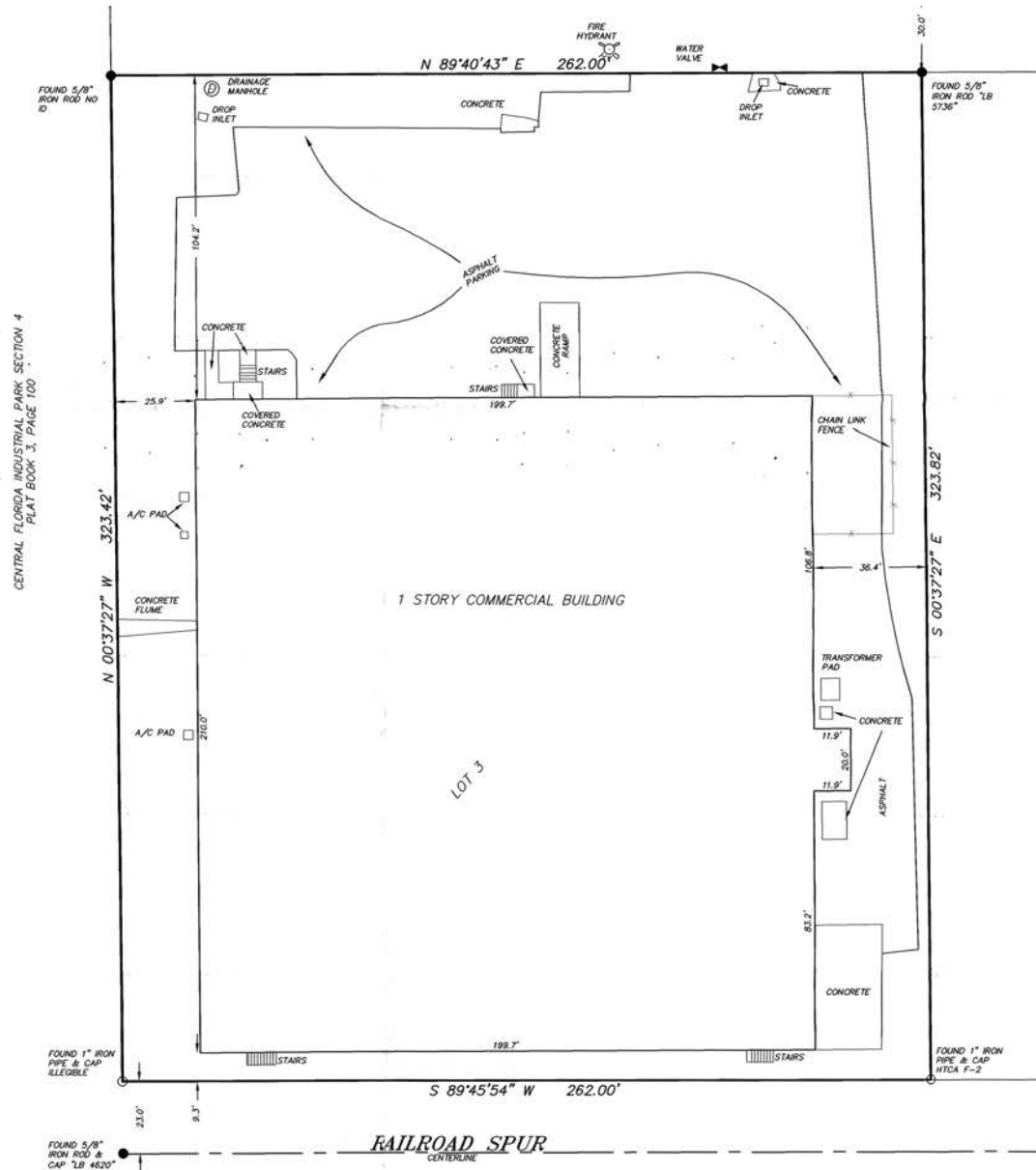
For sale

780 Central Florida Pkwy, Orlando, FL | 42,240 SF

 **JLL** SEE A BRIGHTER WAY

Property features

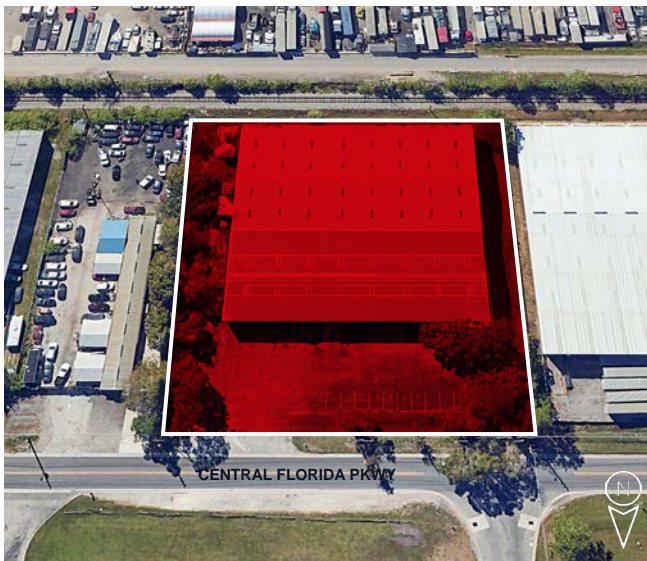
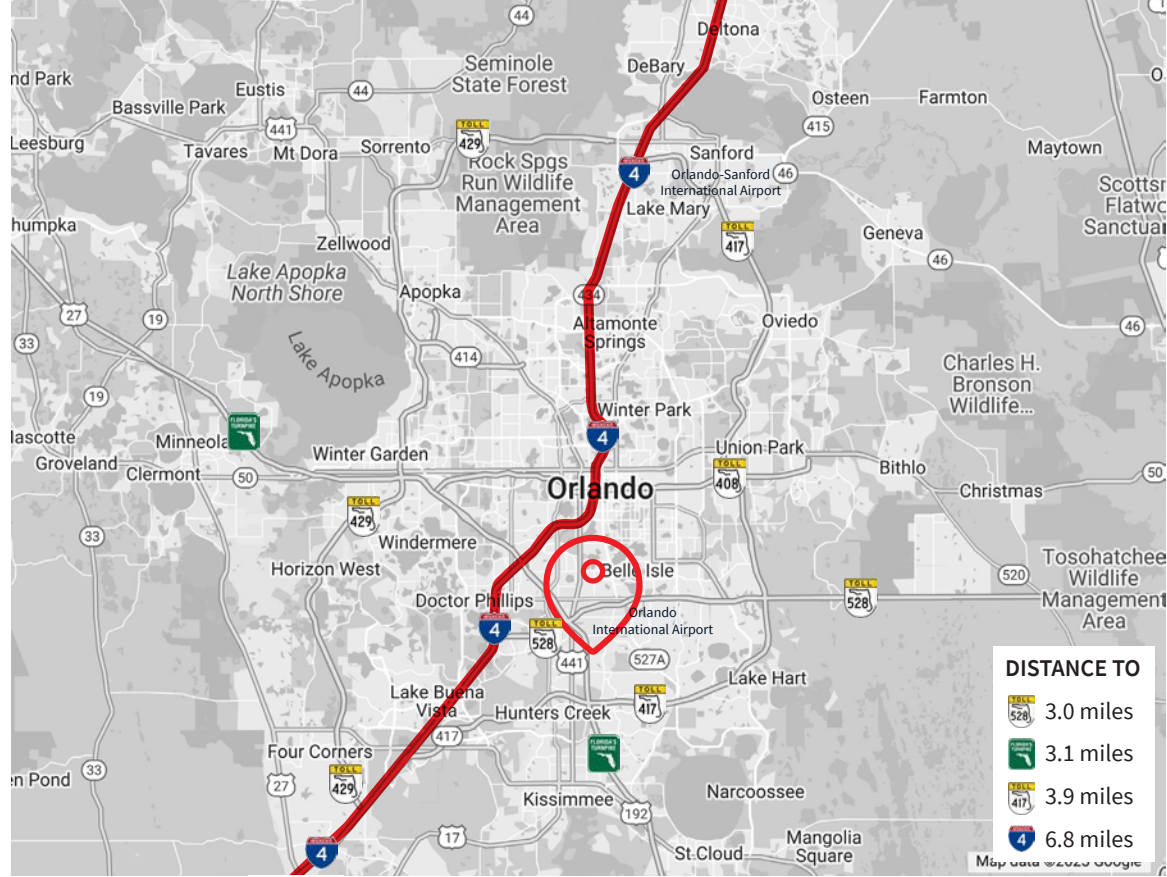
- 42,240 SF building
- 2,829 SF of office
- 18' - 22' clear height
- 5 dock doors
- 1 ramp
- Front load
- 210' building depth
- Class IV sprinkler system
- 1,800 amps, 277/480 volt power
- Block and metal construction
- Built in 1981 and 1988
- 1.95 acres
- Zoned I-4, Orange County
- Currently a plastic injection molding factory
- \$6,800,000 (\$160.98/SF)



780 Central Florida Parkway / Orlando

Location

- Excellent access to Sand Lake Rd, US Highway 441, the Florida's Turnpike-State Road 528 (Beachline Expressway) interchange and Central Florida Greenway (State Road 417)
- Eight miles from Orlando International Airport, which provided service to almost 58 million passengers in 2023
- Nearby amenities include Florida Mall, Universal Orlando theme parks, Sea World theme parks, International Drive tourist corridor, Downtown Orlando, Gatorland and Lake Nona



DEMOGRAPHICS	30 minutes	60 minutes	120 minutes
Total population	1,271,962	3,684,649	10,150,351
Total households	461,987	1,375,785	4,053,039
Average HH income	\$101,534	\$103,967	\$101,698
Total businesses	69,589	151,939	405,791
Total employees	792,708	1,639,634	4,137,026

JLL

Matt Sullivan, SIOR, CCIM

Executive Managing Director

Matt.Sullivan@jll.com

+1 407 930 1801

Cameron Montgomery

Senior Associate

Cameron.Montgomery@jll.com

+1 407 982 8650

CORCORAN PREMIER REALTY

Matthew Halpin

Sales Associate

MattRHalp@gmail.com

+1 407 709 4788

Although information has been obtained from sources deemed reliable, JLL does not make any guarantees, warranties or representations, express or implied, as to the completeness or accuracy as to the information contained herein. Any projections, opinions, assumptions or estimates used are for example only. There may be differences between projected and actual results, and those differences may be material. JLL does not accept any liability for any loss or damage suffered by any party resulting from reliance on this information. If the recipient of this information has signed a confidentiality agreement with JLL regarding this matter, this information is subject to the terms of that agreement. ©2024. Jones Lang LaSalle Brokerage, Inc. All rights reserved.

Jones Lang LaSalle Brokerage, Inc., a licensed real estate broker across the US | 250 South Orange Avenue, Suite 700P, Orlando, FL 32801