


4,875 SF OF INDUSTRIAL SPACE **FOR LEASE**



Get more information

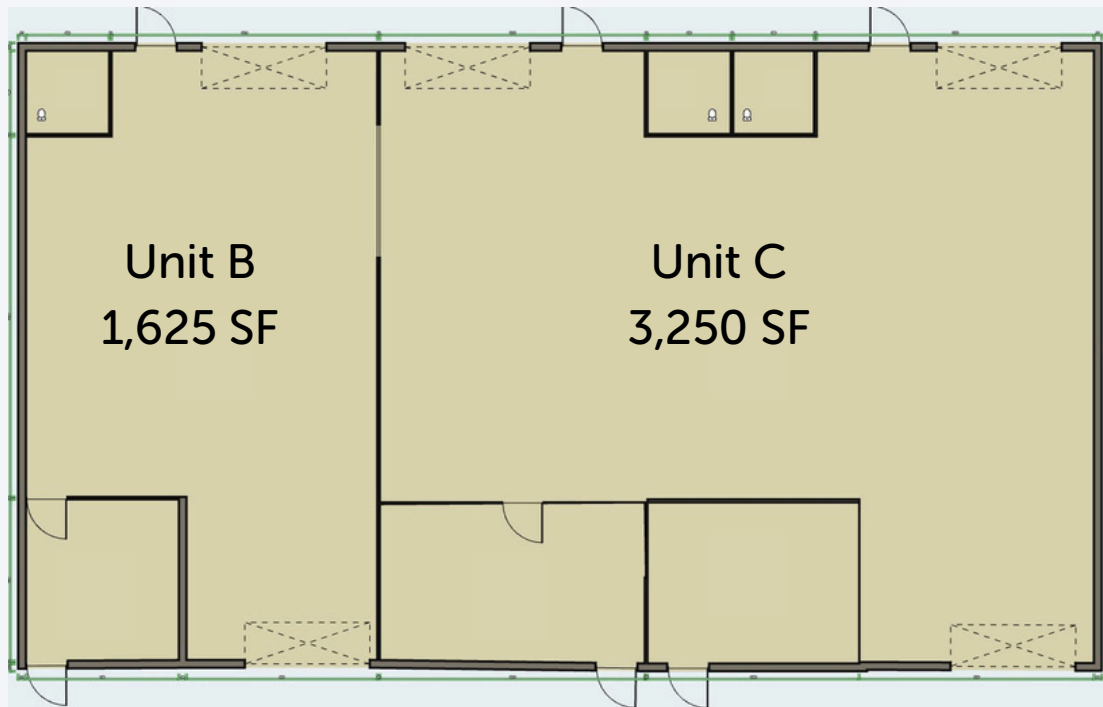
 (720) 515-7224

 3955 Newport St. Denver, CO

80207

BUILDING FEATURES

- Superior access to I-70 and I-270
- Approximately 15 minutes to DT Denver
- Dedicated auto & truck parking
- Free street parking
- Secured parking in back alley
- Heat/Air conditioning
- 3 unisex bathrooms
- 3 office/storage rooms
- Floor drains
- 12' foot clear heights
- Signage
- 2 Dock doors
- 3 Drive-in bays



BUILDING DETAILS

Available	1,625-4,875 SF
Lease Rate	\$12.00/SF
NNN	\$5.00/SF
Year Built	1972