



**+/- 4,625 SF MEDICAL OFFICE CONDO  
FOR SALE OR LEASE**

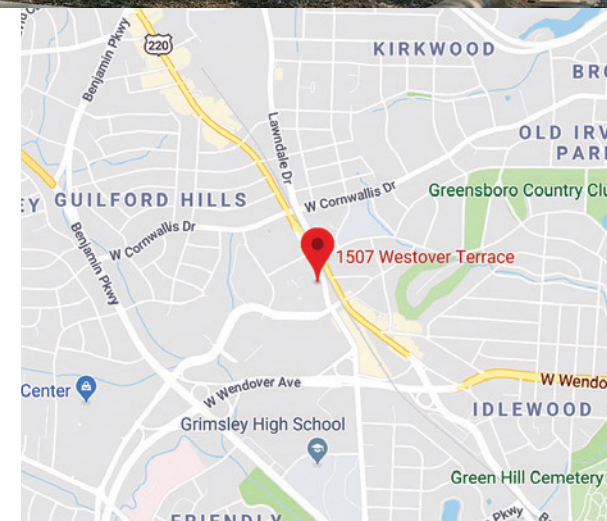
## Property Highlights

- FOR SALE \$1,050,000.00
- FOR LEASE \$21.00 PSF Modified Gross
- +/- 4,625 SF
- Single-story medical office space
- Shared porte-cochère
- Large waiting area
- On-site patient parking
- Conveniently located on Westover Terrace and Green Valley Road
- 1.9 miles from Cone Hospital
- 1.5 miles from Wesley Long Hospital

**Kevin Kemp, SIOR**  
Managing Director  
+1 336 812 3307  
kevin.kemp@cushwake.com

**Raffl Simel, SIOR**  
Director  
+1 336 289 2541  
raffl.simel@cushwake.com

628 Green Valley Road, Suite 202  
Greensboro, NC 27408  
Main: +1 336 668 9999  
Fax: +1 336 668 0888  
[cushmanwakefield.com](http://cushmanwakefield.com)





# 1507-B Westover Terrace

Greensboro, NC 27408



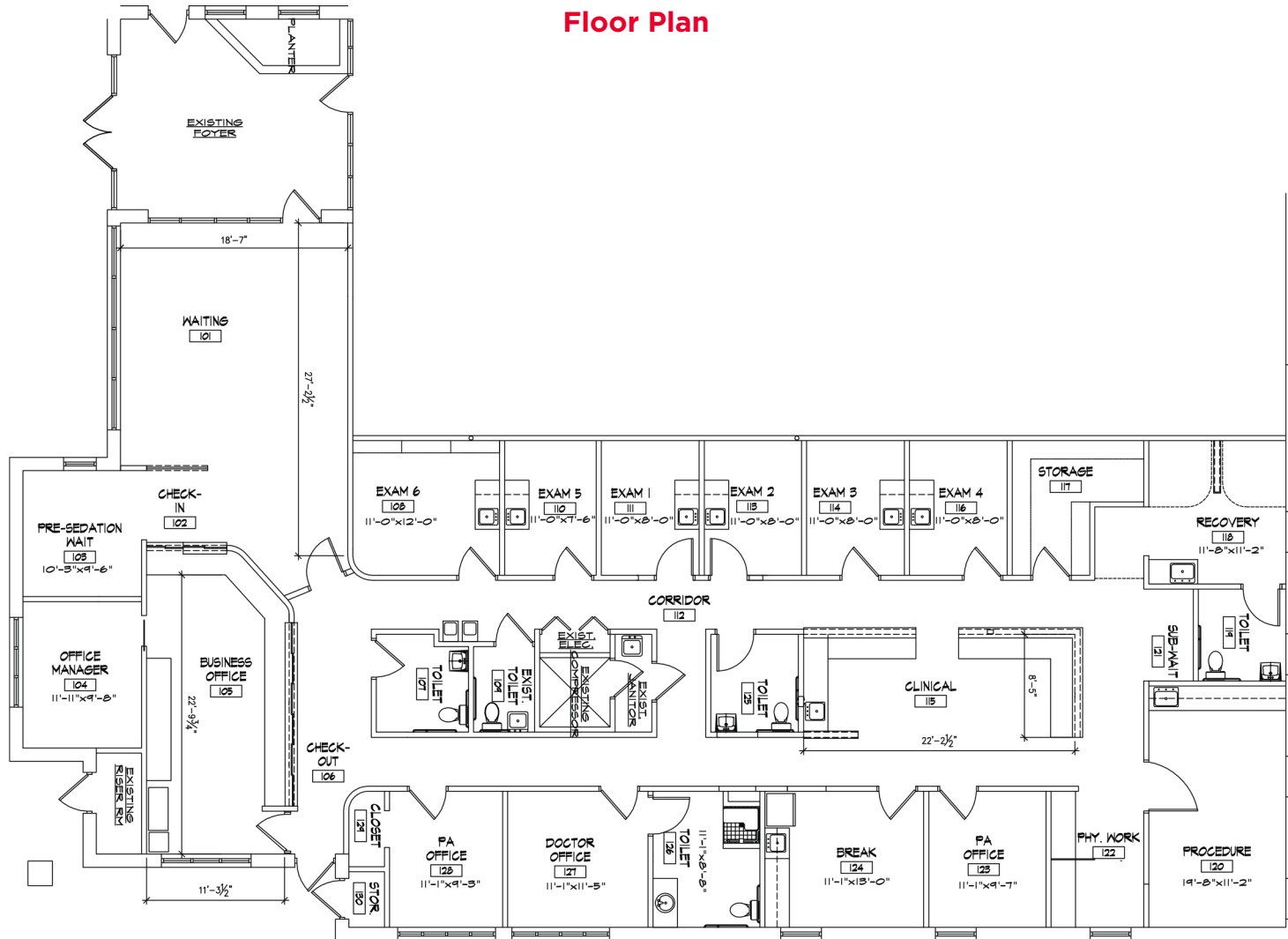
**Kevin Kemp, SIOR**  
Managing Director  
+1 336 812 3307  
kevin.kemp@cushwake.com

**Raffl Simel, SIOR**  
Director  
+1 336 289 2541  
raffl.simel@cushwake.com

628 Green Valley Road, Suite 202  
Greensboro, NC 27408  
Main: +1 336 668 9999  
Fax: +1 336 668 0888  
[cushmanwakefield.com](http://cushmanwakefield.com)



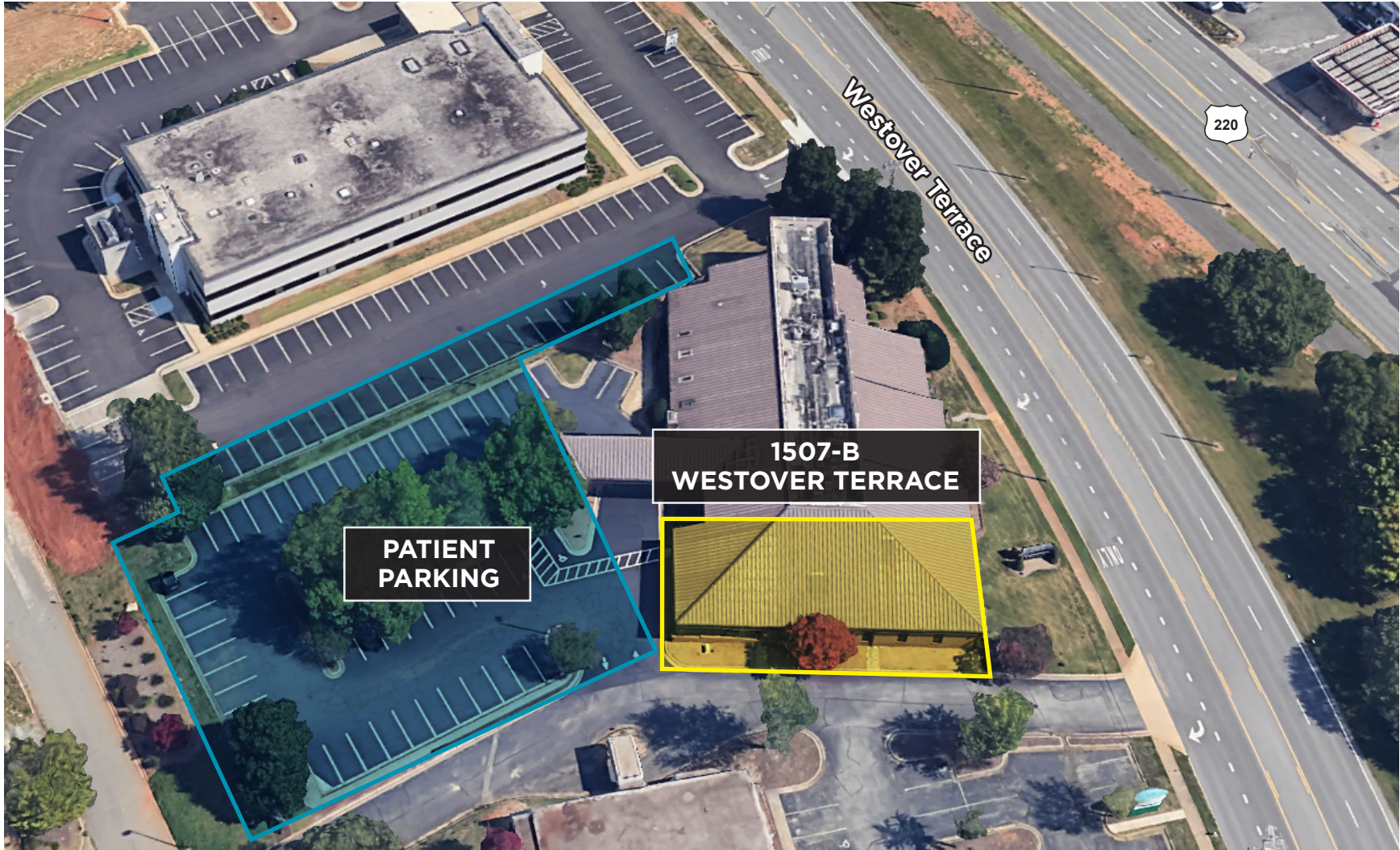
**Floor Plan**



**Kevin Kemp, SIOR**  
Managing Director  
+1 336 812 3307  
kevin.kemp@cushwake.com

**Raffi Simel, SIOR**  
Director  
+1 336 289 2541  
raffi.simel@cushwake.com

628 Green Valley Road, Suite 202  
Greensboro, NC 27408  
Main: +1 336 668 9999  
Fax: +1 336 668 0888  
**cushmanwakefield.com**



**Kevin Kemp, SIOR**  
Managing Director  
+1 336 812 3307  
kevin.kemp@cushwake.com

**Raffl Simel, SIOR**  
Director  
+1 336 289 2541  
raffl.simel@cushwake.com

628 Green Valley Road, Suite 202  
Greensboro, NC 27408  
Main: +1 336 668 9999  
Fax: +1 336 668 0888  
**cushmanwakefield.com**