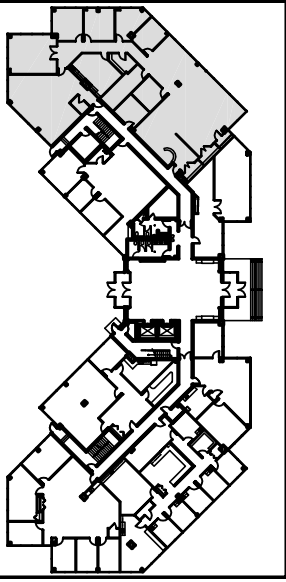


**KEY PLAN**



**GENERAL NOTE**

SUITE 101 IS APPROX. 5,643 RSF.  
 NOTE: ALL ROOM DIMENSIONS ARE APPROXIMATE AND SHOULD BE FIELD VERIFIED FOR COMPLETE ACCURACY.

**JC POLEK**

A R C H I T E C T S L L C  
 4241 Conestoga Road, Elverson, PA 19520  
 (610) 952-2549

SIX NESHAMINY INTERPLEX  
 FIRST FLOOR - SUITE 101  
 TREVOSE, PA 19053



**KORMAN** COMMERCIAL PROPERTIES

TWO NESHAMINY INTERPLEX  
 SUITE 305, TREVOSE, PA 19053  
 PHONE: 215-244-5175 FAX: 215-245-6243

**6**  
**101**