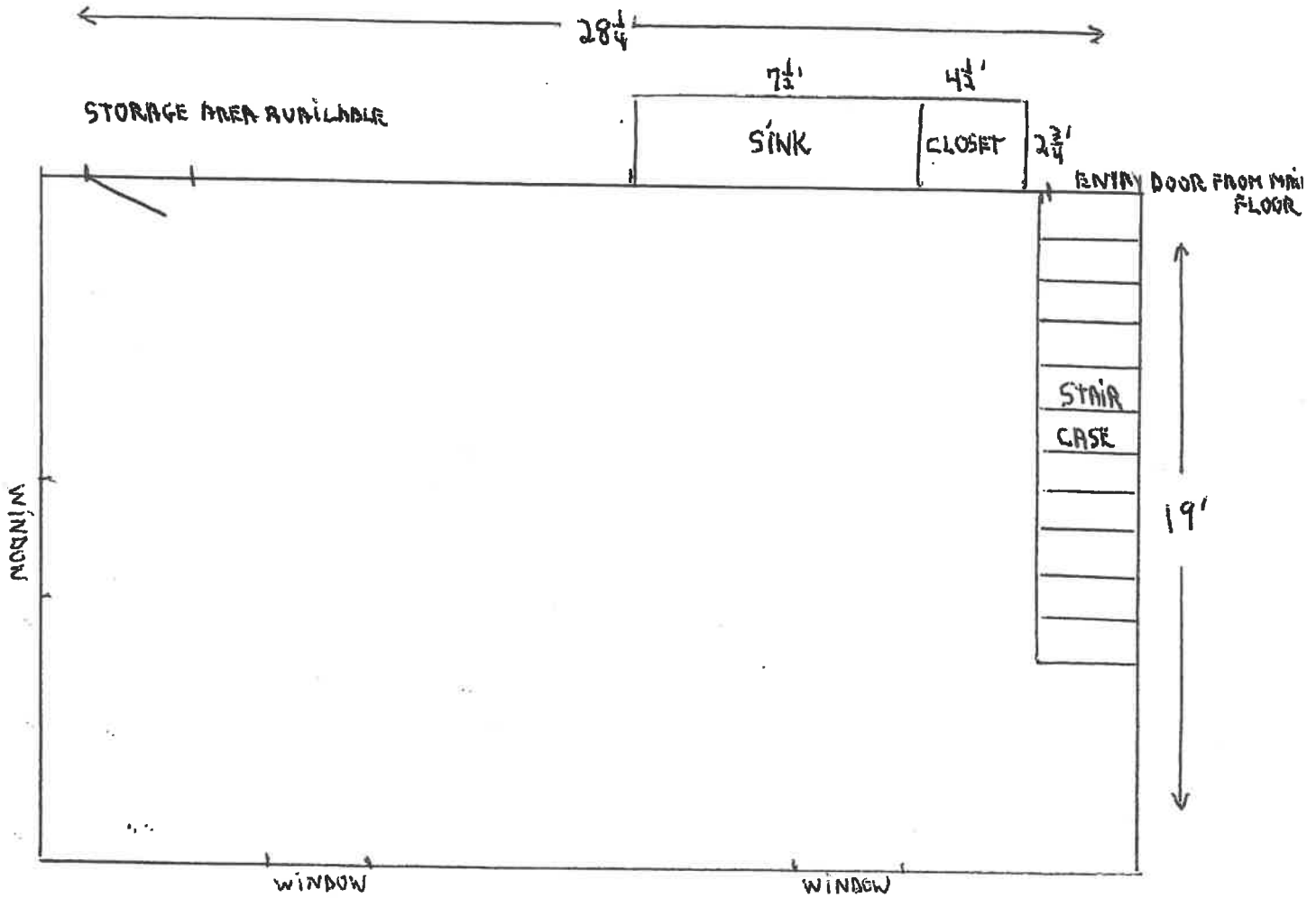


FLOOR PLAN

Suite LL110

25 S. Washington Street

Naperville IL 60540



LIST PRICE PER SQUARE FOOT:

Base Rent	\$10.70
Tax	\$ 5.60
CAM	<u>\$ 4.75</u>
Total	<u><u>\$21.05</u></u>
Or \$1,000 per month	

USEABLE SQUARE FEET:

570